



November 14, 2018

Ms. Julie Murphy, Director
Colorado Oil & Gas Conservation Commission
1120 Lincoln Street, Ste. 801
Denver, Colorado 80203

RE: Rule 318.A.e.

GP Jackson Fed 17W-25-4N, GP Jackson Fed 17W-25-5N, GP Jackson Fed 17W-25-6N, GP Jackson Fed 17W-25-7C, GP Jackson Fed 17W-25-8N, GP Jackson Fed 17W-25-9N, GP Jackson Fed 17W-25-10
NNENE Section 20, Township 5N, Range 65W, Weld County, CO

Dear Ms. Murphy,

Extraction Oil and Gas, Inc. (Extraction) is planning to drill the captioned horizontal wells in accordance with the provision of COGCC Rule 318A.e.

The wellbore spacing unit will be 960 acres, comprised of Section 17: S/2, Section 18: S/2, Township 5 North, Range 65 West, 6th P.M.; Section 13: S/2, Township 5 North, Range 66 West, 6th P.M. The subject wells are planned to drill and test the viability of the Niobrara and Codell formations. The wellbore spacing unit is depicted on the enclosed spacing unit exhibit.

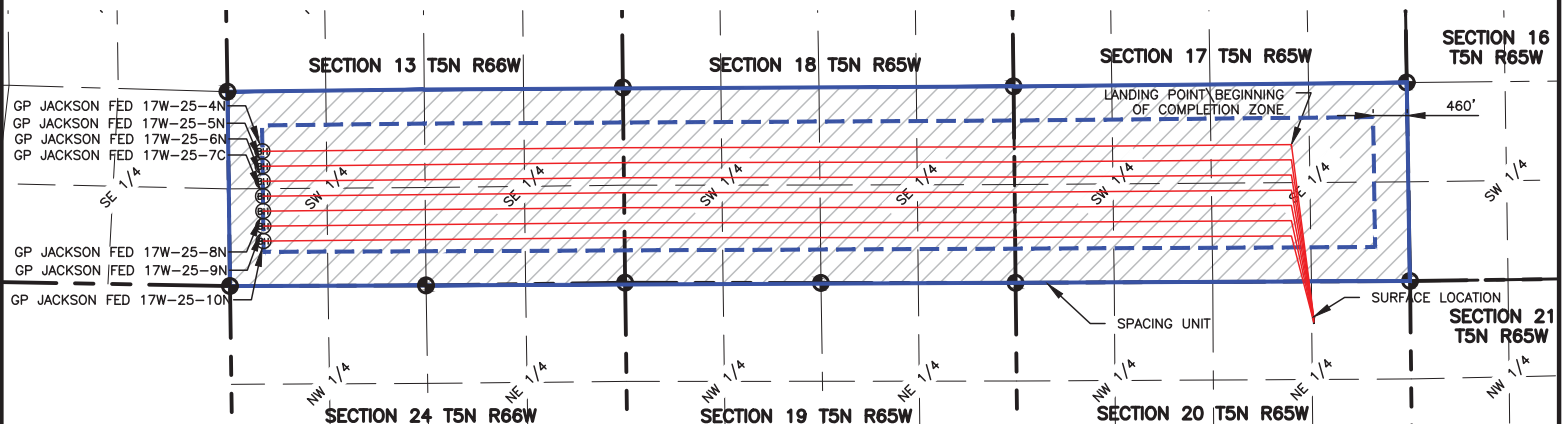
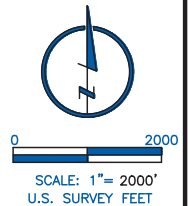
Extraction hereby certifies to the Director that all Owners within the proposed spacing unit above were notified and 30 days have passed without objection.

Sincerely,

Bonnie Lamond
Extraction Oil & Gas, Inc.

NAME: JACKSON
SPACING UNIT: SEC 13: S2; T5N, 66W; SEC 18: S2; SEC 17: S2, T5N, 65W, UNIT ACREAGE: 960

WELL NAME	SURFACE LOCATION				LANDING POINT\BEGIN HORIZONTAL COMPLETION ZONE				BOTTOM HOLE\END HORIZONTAL COMPLETION ZONE				COMPLETION ZONE BEARING	COMPLETION ZONE LENGTH
	DIST.	DIR.	DIST.	DIR.	DIST.	DIR.	DIST.	DIR.	DIST.	DIR.	DIST.	DIR.		
GP JACKSON FED 17W-25-4N	477'	FNL	1305'	FEL	1846'	FSL	1568'	FEL	1816'	FSL	460'	FWL	S89°26'20"W, S89°52'22"W S89°32'12"W	4869.05', 5266.11' 3737.35'
GP JACKSON FED 17W-25-5N	489'	FNL	1305'	FEL	1641'	FSL	1571'	FEL	1614'	FSL	460'	FWL	S89°26'40"W, S89°53'18"W S89°33'33"W	4868.75', 5265.90' 3735.22'
GP JACKSON FED 17W-25-6N	501'	FNL	1305'	FEL	1436'	FSL	1575'	FEL	1412'	FSL	460'	FWL	S89°27'00"W, S89°54'14"W S89°34'53"W	4868.46', 5265.69' 3733.10'
GP JACKSON FED 17W-25-7C	513'	FNL	1305'	FEL	1231'	FSL	1578'	FEL	1210'	FSL	460'	FWL	S89°27'20"W, S89°55'10"W S89°36'14"W	4868.16', 5265.49' 3730.98'
GP JACKSON FED 17W-25-8N	526'	FNL	1305'	FEL	1026'	FSL	1582'	FEL	1009'	FSL	460'	FWL	S89°27'40"W, S89°56'05"W S89°37'34"W	4867.87', 5265.28' 3728.86'
GP JACKSON FED 17W-25-9N	538'	FNL	1305'	FEL	820'	FSL	1585'	FEL	807'	FSL	460'	FWL	S89°28'00"W, S89°57'01"W S89°38'54"W	4867.57', 5265.07' 3726.74'
GP JACKSON FED 17W-25-10N	550'	FNL	1305'	FEL	614'	FSL	1588'	FEL	605'	FSL	460'	FWL	S89°28'20"W, S89°57'57"W S89°41'13"W	4867.28', 5264.87' 3724.62'



LAMP RYNEARSON & ASSOCIATES

4715 Innovation Drive 970.226.0342 | P
 Fort Collins, CO 80525 970.226.0879 | F
 www.LRA-inc.com

PLANNED SPACING UNIT EXHIBIT
 GREELEY DIRECTIONAL
 JACKSON SPACING UNIT

LEGEND
 ALIQUOT CORNER
 BOTTOM HOLE
 COMPUTED ALIQUOT CORNER
 SECTION LINE
 QUARTER SECTION LINE
 SIXTEENTH LINE
 COMPUTED ALIQUOT CORNER FROM MONUMENT RECORDS
 COMPUTED FROM GLO RECORDS

DRAWN BY
 JMC
 PATH\FILENAME

DATE
 4/9/2018

COGOC ID
 332837

PROJECT - TASK NUMBER
 0213001.01
 L:\Engineering\0213001.01 XOC - Greeley Directional GP

BOOK AND PAGE
 MR01/MR02

SURFACE - LOCATION
 NE/4,NE/4, SEC20, T5N, R65W