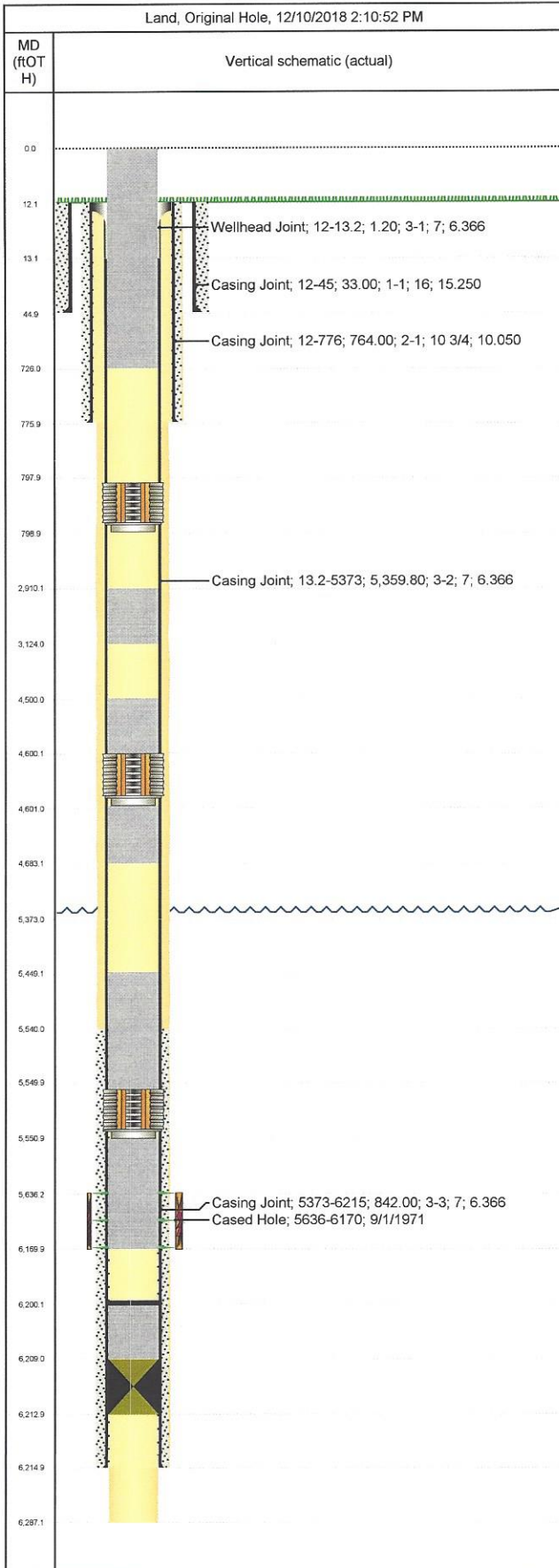




# Wellbore Schematic

Well Name Union Pacific 72X31	Lease Union Pacific	Field Name Rangely	Business Unit Mid-Continent
----------------------------------	------------------------	-----------------------	--------------------------------



Job Details					
Job Category			Start Date		Rig/Unit End Date
Abandon			9/27/2017		10/5/2017
Casing Strings					
Csg Des	OD (in)	Wt/Len (lb/ft)	Grade	Top Thread	Set Depth (MD) (ftOTH)
Conductor	16	65.00	H-40		45
Surface	10 3/4	40.50	H-40		776
Production Casing	7	23.00	J-55		6215
Perforations					
Date	Top (ftOTH)	Btm (ftOTH)	Shot Dens (shots/ft)	Entered Shot Total	Linked Zone
9/1/1971	5,636.0	6,170.0	3.0		Weber, Original Hole
Other Strings					
Run Date	Pull Date	Set Depth (ftOTH)	Com		
Other In Hole					
Des	Top (ftOTH)	Btm (ftOTH)	Run Date	Pull Date	Com
Cement	0.0	726.0	10/4/2017		Cement from 50' above shoe @726' 67.8 bbls, 331 sx to surface,
Cement Retainer	798.0	799.0	10/3/2017		Set retainer and attempt to fill OH, pumped 44.5 bbls, 190 sxs.
Cement	2,910.0	3,124.0	9/30/2017		Balanced plug, 45sx
Cement	4,500.0	4,600.0	9/29/2017		101' cmt on top of retainer, 4 bbls
Bridge Plug (retrievable)	4,525.0	4,531.0	8/2/2017	9/29/2017	CIBP
Bridge Plug (retrievable)	4,589.0	4,592.0	7/28/2017	8/1/2017	
Cement Retainer	4,600.0	4,601.0	9/29/2017		
Cement	4,601.0	4,683.0	9/30/2017		Cement csg leak interval, 75 sxs Class G cement
Cement	5,449.0	5,550.0	9/29/2017		101' cmt on top of retainer, 4.5 bbls
Cement Retainer	5,550.0	5,551.0	9/29/2017		
Cement	5,551.0	6,170.0	9/29/2017		Cement perms for P&A 215 sxs Class G cement.
Bridge Plug (retrievable)	5,580.0	5,584.0	7/28/2017	9/28/2017	
Cement	6,200.0	6,209.0	8/31/1971		
Bridge Plug (Permanent)	6,209.0	6,213.0	8/31/1971		CIBP