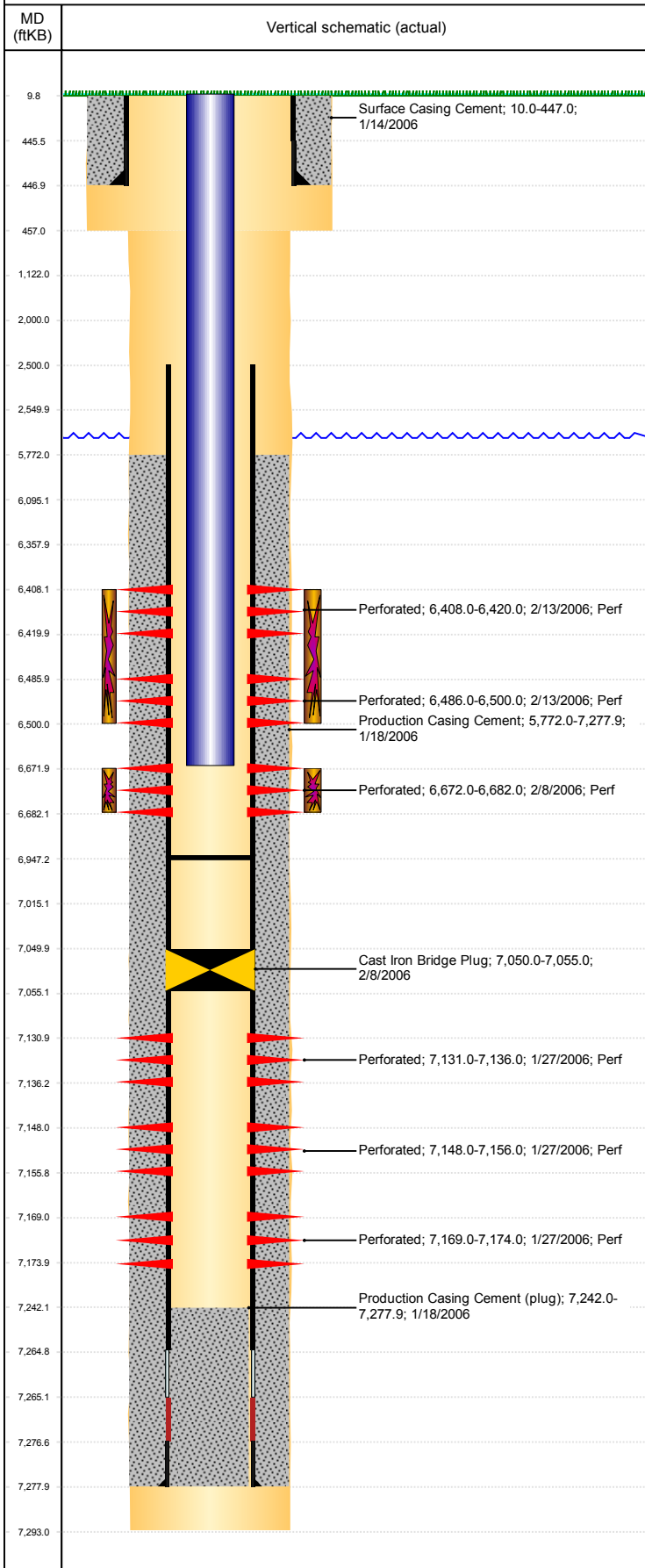


**Well Name: FRANK C12-17**

VERTICAL, ORIGINAL HOLE, 12/5/2018 1:28:21 PM



Well Header					
API 05-123-23455		Business Unit DJ BASIN		District 15	Well Config VERTICAL
KB - GL / MSL (ft... 10.00	Spud Date 1/14/2006	P & A Date		Well Production Status SI	
SoRT No					
Comment					

## Surface Location (Congressional)

Qtr 3	Qtr 4	Section	Twonshp	Twonsh...	Range	Rng E/...	Actual Latitude (")	Actual Longitude (")
NE	NE	12	4	N	64	W	40.33071490	-104.49407020

## Wellbore Sections

Section Des	Size (in)	Act Top, MD (ftKB)	Act Btm, MD (ftKB)
SURFACE	12 1/4	10	457
PRODUCTION	7 7/8	457	7,293

## Casing Strings

Csg Des	Run Date	OD (in)	Wt/Len (lb/ft)	Grade	Top, MD (ftKB)	MD (ftKB)
Surface	1/14/2006	8 5/8	24.00	J-55	10.0	447.0
Production	1/18/2006	4 1/2	11.60	M-80	10.0	7,277.9

## Cement

Des	Start Date	Top (ftKB)	Btm (ftKB)
Surface Casing Cement	1/14/2006	10.0	447.0
Production Casing Cement	1/18/2006	5,772.0	7,277.9

## Zone Statuses

Zone Name	Status Date	Status	Fluid Type	Job	Prod Method
CODELL	3/4/2006	PR		DRILLING/COMPLETION - ORIGINAL, 1/14/2006...	
CODELL	8/18/2009	PR	Water		Flowing
NIOBRARA	8/18/2009	PR	Water		Flowing
NIOBRARA	10/27/2016	SI			
J SAND	2/8/2006	SI		DRILLING/COMPLETION - ORIGINAL, 1/14/2006...	

## Perforation Data

Linked Zone	Bnch/Stg	Entered Shot Total	Top (ftKB)	Btm (ftKB)	Date
NIOBRARA, ORIGINAL HOLE		72	6,408.00	6,420.00	2/13/2006
NIOBRARA, ORIGINAL HOLE		84	6,486.00	6,500.00	2/13/2006
CODELL, ORIGINAL HOLE		40	6,672.00	6,682.00	2/8/2006
J SAND, ORIGINAL HOLE		20	7,131.00	7,136.00	1/27/2006
J SAND, ORIGINAL HOLE		32	7,148.00	7,156.00	1/27/2006
J SAND, ORIGINAL HOLE		20	7,169.00	7,174.00	1/27/2006

## Stimulation Intervals

Zone	Start Date	Top (ftKB)	Btm (ftKB)
NIOBRARA, ORIGINAL HOLE	3/3/2006	6,408.0	6,500.0
CODELL, ORIGINAL HOLE	2/13/2006	6,672.0	6,682.0
NIOBRARA, ORIGINAL HOLE	2/13/2006		

## Other In Hole

Run Date	Des	OD (in)	Top (ftKB)	Btm (ftKB)
2/8/2006	Cast Iron Bridge Plug	4 1/2	7,050.0	7,055.0

## Logs

Date	Type	Top, MD (ftKB)	Btm, MD (ftKB)
1/18/2006	COMPENSATED DENSITY	3,350.0	7,273.0
1/18/2006	INDUCTION	447.0	7,293.0
1/26/2006	CBL/CCL/GR	5,650.0	7,234.0

## Plug Back Total Depths

Date	Type	Com	Depth (ftKB)
1/26/2006	FILL	DEPTH LOGGER ON CBL	7,242.0
4/4/2006	PLUG REMNANTS	DRILL CBP AND CLEAN OUT TO 6947'	6,947.2