

CB7 WELL LOCATION EXHIBIT

2 1/2" ALUM CAP
37897, 2010
(FIELD DATE
11-27-17)

2 1/2" ALUM CAP
28285, NO DATE

2 1/2" ALUM CAP
PLS 35597, 2013

SURFACE LOCATION:
GROUND ELEVATION=4945'
NAD83
LATITUDE:40.705339° N
LONGITUDE:104.123654° W

LANDING POINT LOCATION:
NAD83
LATITUDE:40.700355° N
LONGITUDE:104.124465° W

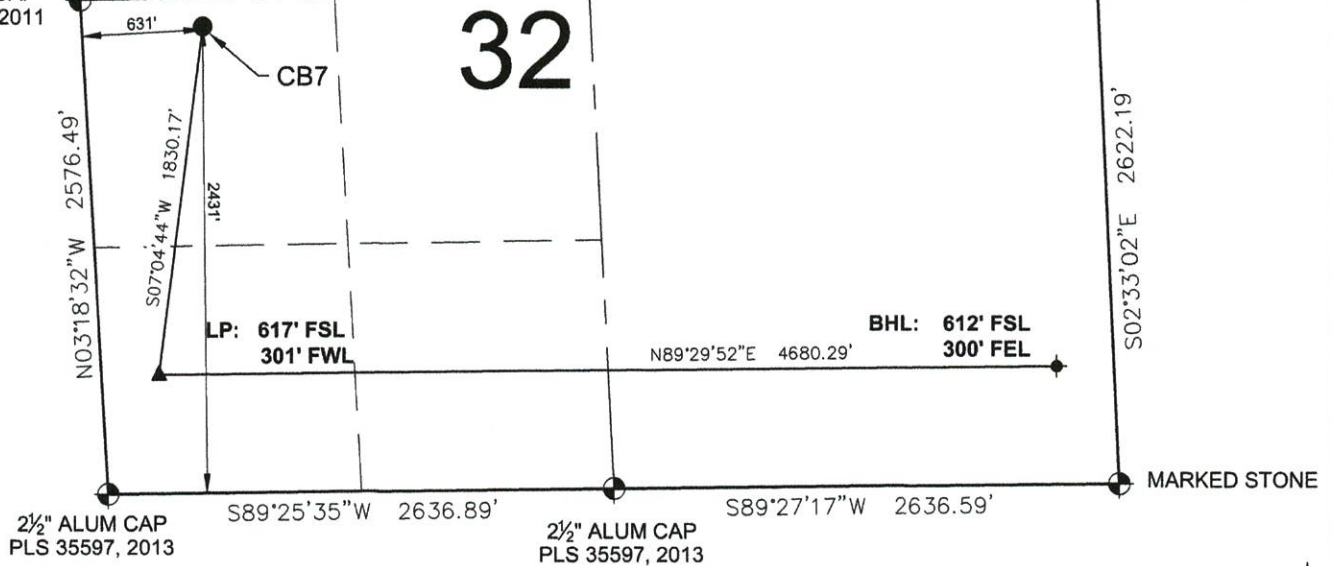
BOTTOM HOLE LOCATION:
NAD83
LATITUDE:40.700471° N
LONGITUDE:104.107590° W

NOTES:
BH LOCATION PROVIDED BY CLIENT.
LAND SURFACE USE- RANGELAND
SEE LOCATION DRAWING FOR ADDITIONAL
IMPROVEMENTS WITHIN 500'

PDOP= 1.3
GPS OPERATOR: BRIAN HOPKINSON

2 1/2" ALUM CAP
PLS 38061, 2011

2 1/2" ALUM CAP
PLS 35597, 2013



LEGEND

- = EXISTING MONUMENT
- = CALCULATED POSITION
- = PROPOSED WELL
- ◆ = EXISTING WELL
- ◆ = BOTTOM HOLE
- ▲ = LANDING POINT
- LP = LANDING POINT
- BHL = BOTTOM HOLE LOCATION

NOTES:

- THIS FIELD SURVEY CONFORMS TO THE MINIMUM STANDARDS SET BY THE C.O.G.C.C., RULE NO. 215
- ALL DISTANCES AND BEARINGS SHOWN HEREON ARE GROUND VALUES AS GPS MEASURED IN THE FIELD, WITH TIES TO WELLS MEASURED PERPENDICULAR TO LINES SHOWN HEREON. THIS LOW DISTORTION PROJECTION (LDP) IS BASED ON THE NORTH AMERICAN DATUM OF 1983, U.S. SURVEY FOOT WITH A LATITUDE ORIGIN OF 40.655085°N, A CENTRAL MERIDIAN LONGITUDE OF 104.086861°W, AND A SCALE FACTOR ON THE CENTRAL MERIDIAN OF 1.000232 (EXACT). THE LDP BASIS OF BEARINGS IS GEODETIC NORTH.
- FIELD VERIFICATION OF MONUMENTS COMPLETED WITHIN 1 YEAR OF SIGNATURE DATE, UNLESS OTHERWISE NOTED.

NOTICE: ACCORDING TO COLORADO LAW YOU MUST COMMENCE ANY LEGAL ACTION BASED UPON ANY DEFECT IN THIS SURVEY WITHIN THREE YEARS AFTER YOU FIRST DISCOVER SUCH DEFECT. IN NO EVENT MAY ANY ACTION BASED UPON ANY DEFECT IN THIS SURVEY BE COMMENCED MORE THAN TEN YEARS FROM THIS SAID DATE OF THIS CERTIFICATION SHOWN HEREON.

WELL CB7 TO BE LOCATED 2431' FSL & 631' FWL

I, ROBERT J. GUFFEY, A LICENSED PROFESSIONAL LAND SURVEYOR IN THE STATE OF COLORADO, DO HEREBY STATE TO **MALLARD EXPLORATION** THAT THE WELL LOCATION EXHIBIT SHOWN HEREON WAS PREPARED BY ME OR UNDER MY DIRECT SUPERVISION AND THE DRAWING SHOWN HEREON ACCURATELY DEPICTS THE PROPOSED LOCATION OF THE WELL. THIS EXHIBIT MEETS THE REQUIREMENTS OF A GIS LAND POSITION AS DEFINED BY SECTION 38-51-102 (7.5) C.R.S. AND AS SUCH PER SECTION 38-51-109.3 C.R.S. CANNOT BE RELIED UPON TO DETERMINE OWNERSHIP.

ROBERT J. GUFFEY, PLS 20680
COLORADO LICENSED PROFESSIONAL LAND SURVEYOR
FOR AND ON BEHALF OF P.F.S., LLC
d.b.a. ASCENT GEOMATICS SOLUTIONS



FIELD DATE: 10-19-18	WELL NAME: CB7
DRAWING DATE: 11-05-18	SURFACE LOCATION: NW 1/4 SW 1/4 SEC. 32, T9N, R60W, 6TH P.M. WELD COUNTY, COLORADO
BY: IIC	CHECKED: MMP

PREPARED FOR:

