

NOBLE ENERGY, INC

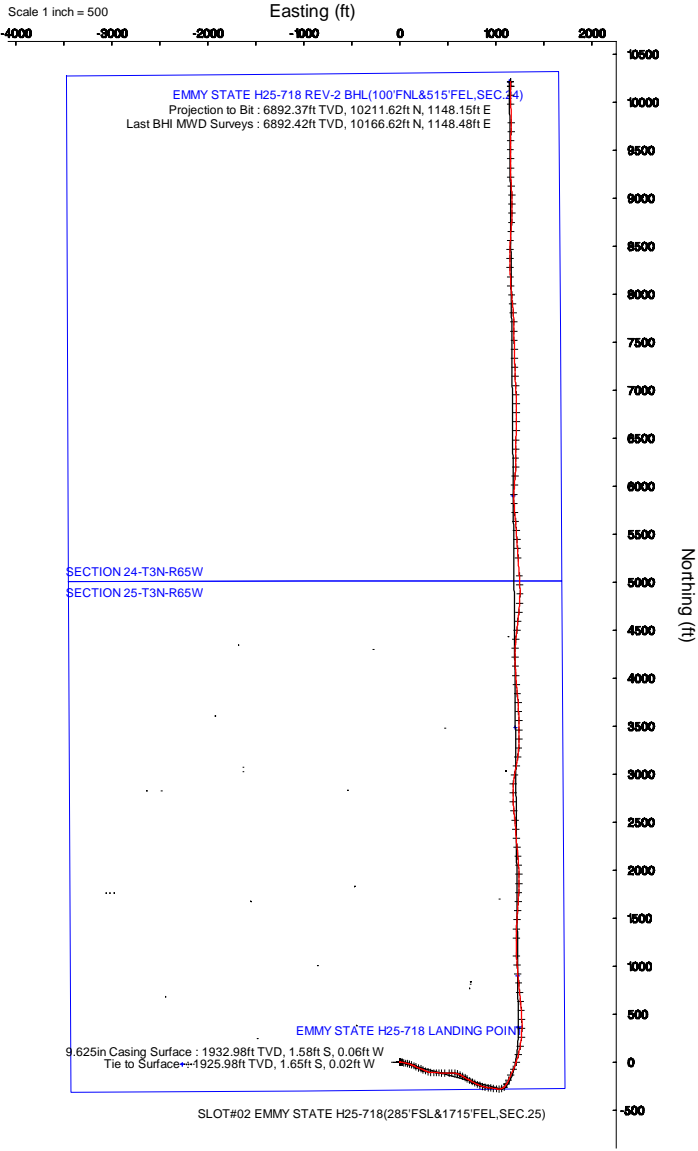
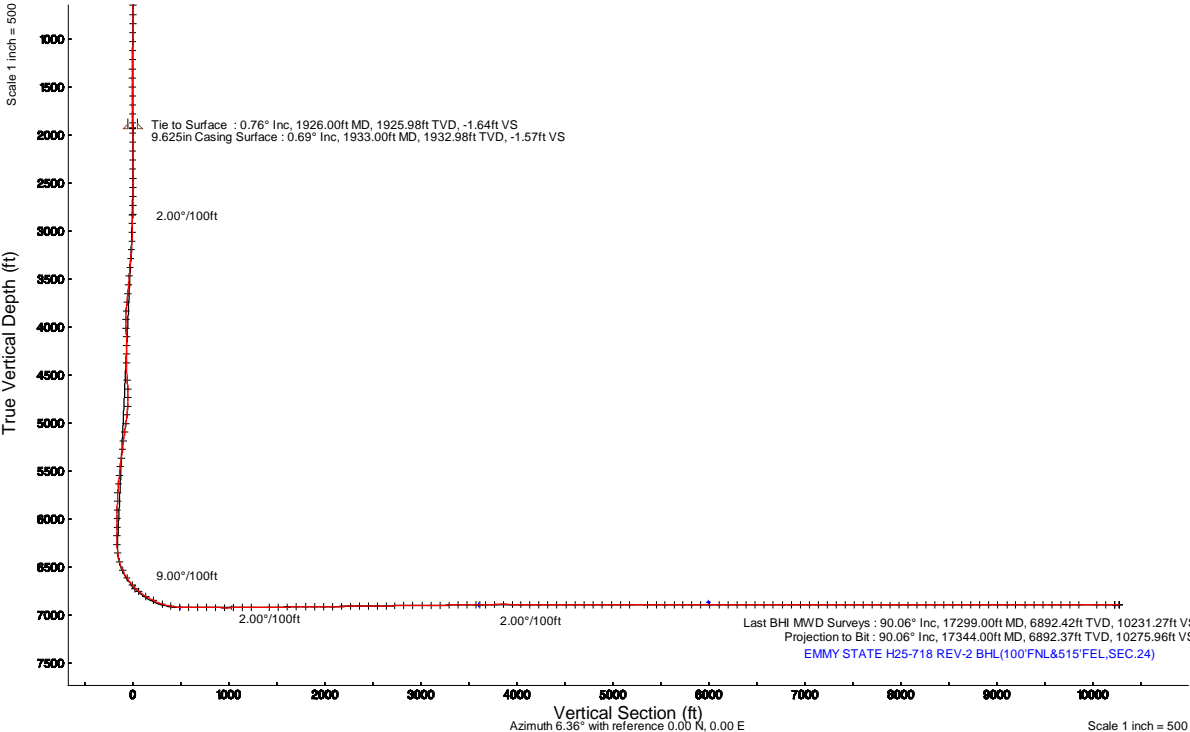


| | | | |
|-----------|---------------------------------|-----------|---|
| Location: | COLORADO | Slot: | SLOT#02 EMMY STATE H25-718(285'FSL&1715'FEL,SEC.25) |
| Field: | WELD COUNTY (NOBLE NAD 83 GRID) | Well: | EMMY STATE H25-718 |
| Facility: | SEC.25-T03N-R65W | Wellbore: | EMMY STATE H25-718 PWB |

| | |
|---|--|
| Plot reference wellpath is EMMY STATE H25-718 (REV-B.0) PWP | Grid System: NAD83 / Lambert Colorado SP, Northern Zone (501), US feet |
| True vertical depths are referenced to Rig (30KB) (RKB) | * = Wellpath was transformed from a different geodetic datum |
| Measured depths are referenced to Rig (30KB) (RKB) | North Reference: Grid north |
| Rig (30KB) (RKB) to Mean Sea Level: 4835 feet | Scale: True distance |
| Mean Sea Level to Ground level (At Slot: SLOT#02 EMMY STATE H25-718(285'FSL&1715'FEL,SEC.25)): 0 feet | Depths are in feet |
| Coordinates are in feet referenced to Slot | Created by: guenaler on 2018-09-19 |
| | Database: WA_DEN_Denver_Defn |

| Location Information | | | | | |
|---|--------------|--------------|-------------------|--------------------|----------------|
| Facility Name | | | Grid East (US ft) | Grid North (US ft) | Latitude |
| SEC.25-T03N-R65W | | | 3248954.739 | 1313190.352 | 40°11'22.812"N |
| Slot | | | Grid East (US ft) | Grid North (US ft) | Latitude |
| SLOT#02 EMMY STATE H25-718(285'FSL&1715'FEL,SEC.25) | Local N (ft) | Local E (ft) | 3248932.390 | 1313190.128 | 40°11'22.812"N |
| Rig (30KB) (RKB) to Ground level (At Slot: SLOT#02 EMMY STATE H25-718(285'FSL&1715'FEL,SEC.25)) | | | 4835ft | | |
| Mean Sea Level to Ground level (At Slot: SLOT#02 EMMY STATE H25-718(285'FSL&1715'FEL,SEC.25)) | | | 0ft | | |
| Rig (30KB) (RKB) to Mean Sea Level | | | 4835ft | | |

| Bottom Hole Location | | | | | | | |
|----------------------|-------------|---------------|---|--------------|------------------|-------------------|------------------------|
| MD (ft) | Inc (") | Az (°) | TVD (ft) | Local N (ft) | Local E (ft) | Grid East (US ft) | Grid North (US ft) |
| 17325.26 | 90.000 | 359.462 | 6892.46 | 10212.37 | 1137.41 | 3250069.75 | 1323402.04 |
| | | | | | | | |
| Survey Program | | | | | | | |
| Start MD (ft) | End MD (ft) | Tool | Model | | Log Name/Comment | | Wellbore |
| 30.00 | 17375.70 | OWSG MWD rev2 | OWSG MWD rev2 + IFR1 + Multi-Station Correction | | | | EMMY STATE H25-718 PWB |



| REFERENCE WELLPATH IDENTIFICATION | | | |
|-----------------------------------|---------------------------------|----------|---|
| Operator | NOBLE ENERGY, INC | Slot | SLOT#02 EMMY STATE H25-718(285'FSL&1715'FEL,SEC.25) |
| Area | COLORADO | Well | EMMY STATE H25-718 |
| Field | WELD COUNTY (NOBLE NAD 83 GRID) | Wellbore | EMMY STATE H25-718 AWB |
| Facility | SEC.25-T03N-R65W | | |

| REPORT SETUP INFORMATION | | | |
|--------------------------|---|----------------------|---|
| Projection System | NAD83 / Lambert Colorado SP, Northern Zone (501), US feet | Software System | WellArchitect® 5.0 |
| North Reference | Grid | User | Guenaler |
| Scale | 0.999957 | Report Generated | 9/19/2018 at 4:58:33 PM |
| Convergence at slot | 0.58° East | Database/Source file | WA_DEN_Denver_Defn/EMMY_STATE_H25-718_AWP.xml |

| WELLPATH LOCATION | | | | | | |
|-----------------------|-------------------|----------|------------------|-----------------|------------------------|-----------------|
| | Local coordinates | | Grid coordinates | | Geographic coordinates | |
| | North[ft] | East[ft] | Easting[US ft] | Northing[US ft] | Latitude | Longitude |
| Slot Location | -0.22 | -22.35 | 3248932.39 | 1313190.13 | 40°11'22.812"N | 104°36'32.220"W |
| Facility Reference Pt | | | 3248954.74 | 1313190.35 | 40°11'22.812"N | 104°36'31.932"W |
| Field Reference Pt | | | 3000000.00 | 4454105.15 | 48°46'34.315"N | 105°30'00.000"W |

| WELLPATH DATUM | | | |
|--------------------------|-------------------|--|-------------------|
| Calculation method | Minimum curvature | Rig (30'KB) (RKB) to Facility Vertical Datum | 4835.00ft |
| Horizontal Reference Pt | Slot | Rig (30'KB) (RKB) to Mean Sea Level | 4835.00ft |
| Vertical Reference Pt | Rig (30'KB) (RKB) | Rig (30'KB) (RKB) to Ground Level at Slot (SLOT#02 EMMY STATE H25-718 (285'FSL&1715'FEL,SEC.25)) | 4835.00ft |
| MD Reference Pt | Rig (30'KB) (RKB) | Section Origin | N 0.00, E 0.00 ft |
| Field Vertical Reference | Mean Sea Level | Section Azimuth | 6.36° |



Actual Wellpath Report

EMMY STATE H25-718 AWP



| REFERENCE WELLPATH IDENTIFICATION | | | |
|-----------------------------------|---------------------------------|----------|---|
| Operator | NOBLE ENERGY, INC | Slot | SLOT#02 EMMY STATE H25-718(285'FSL&1715'FEL,SEC.25) |
| Area | COLORADO | Well | EMMY STATE H25-718 |
| Field | WELD COUNTY (NOBLE NAD 83 GRID) | Wellbore | EMMY STATE H25-718 AWB |
| Facility | SEC.25-T03N-R65W | | |

| WELLPATH DATA (182 stations) | | | | | | | | | | |
|------------------------------|--------------------|----------------|-------------|-------------------|---------------|--------------|----------------|-----------------|------------------|----------------|
| MD [ft] | Inclination [°] | Azimuth [°] | TVD [ft] | Vert Sect [ft] | North [ft] | East [ft] | Latitude | Longitude | DLS [°/100ft] | Comments |
| 0.00 | 0.000 | 19.710 | 0.00 | 0.00 | 0.00 | 0.00 | 40°11'22.812"N | 104°36'32.220"W | 0.00 | |
| 84.00 | 0.330 | 19.710 | 84.00 | 0.24 | 0.23 | 0.08 | 40°11'22.814"N | 104°36'32.219"W | 0.39 | |
| 179.00 | 0.350 | 10.250 | 179.00 | 0.79 | 0.77 | 0.23 | 40°11'22.820"N | 104°36'32.217"W | 0.06 | |
| 271.00 | 0.260 | 144.890 | 271.00 | 0.91 | 0.88 | 0.40 | 40°11'22.821"N | 104°36'32.215"W | 0.61 | |
| 365.00 | 0.060 | 156.110 | 365.00 | 0.71 | 0.66 | 0.54 | 40°11'22.818"N | 104°36'32.213"W | 0.21 | |
| 460.00 | 0.080 | 342.990 | 460.00 | 0.73 | 0.68 | 0.54 | 40°11'22.819"N | 104°36'32.213"W | 0.15 | |
| 554.00 | 0.210 | 180.520 | 554.00 | 0.62 | 0.57 | 0.52 | 40°11'22.818"N | 104°36'32.213"W | 0.31 | |
| 649.00 | 0.520 | 144.510 | 648.99 | 0.13 | 0.04 | 0.77 | 40°11'22.812"N | 104°36'32.210"W | 0.39 | |
| 743.00 | 0.190 | 157.090 | 742.99 | -0.33 | -0.45 | 1.08 | 40°11'22.807"N | 104°36'32.206"W | 0.36 | |
| 837.00 | 0.270 | 189.830 | 836.99 | -0.69 | -0.81 | 1.10 | 40°11'22.804"N | 104°36'32.206"W | 0.16 | |
| 932.00 | 0.280 | 235.270 | 931.99 | -1.06 | -1.17 | 0.87 | 40°11'22.800"N | 104°36'32.209"W | 0.22 | |
| 1026.00 | 0.290 | 220.870 | 1025.99 | -1.41 | -1.48 | 0.52 | 40°11'22.797"N | 104°36'32.213"W | 0.08 | |
| 1121.00 | 0.330 | 197.300 | 1120.99 | -1.88 | -1.92 | 0.29 | 40°11'22.793"N | 104°36'32.217"W | 0.14 | |
| 1215.00 | 0.400 | 148.470 | 1214.99 | -2.40 | -2.46 | 0.38 | 40°11'22.788"N | 104°36'32.215"W | 0.33 | |
| 1310.00 | 0.120 | 279.350 | 1309.99 | -2.66 | -2.72 | 0.45 | 40°11'22.785"N | 104°36'32.215"W | 0.51 | |
| 1404.00 | 0.140 | 174.400 | 1403.99 | -2.76 | -2.82 | 0.37 | 40°11'22.784"N | 104°36'32.216"W | 0.22 | |
| 1499.00 | 0.160 | 19.430 | 1498.99 | -2.75 | -2.81 | 0.42 | 40°11'22.784"N | 104°36'32.215"W | 0.31 | |
| 1593.00 | 0.210 | 57.110 | 1592.99 | -2.51 | -2.59 | 0.61 | 40°11'22.786"N | 104°36'32.212"W | 0.14 | |
| 1688.00 | 0.100 | 49.350 | 1687.99 | -2.34 | -2.45 | 0.82 | 40°11'22.788"N | 104°36'32.210"W | 0.12 | |
| 1782.00 | 0.180 | 258.090 | 1781.98 | -2.33 | -2.42 | 0.74 | 40°11'22.788"N | 104°36'32.211"W | 0.29 | |
| 1876.00 | 0.540 | 321.070 | 1875.98 | -2.06 | -2.11 | 0.31 | 40°11'22.791"N | 104°36'32.216"W | 0.52 | |
| 1926.00 | 0.760 | 326.670 | 1925.98 | -1.64 | -1.65 | -0.02 | 40°11'22.796"N | 104°36'32.220"W | 0.46 | Tie to Surface |
| 1977.00 | 0.230 | 323.310 | 1976.98 | -1.31 | -1.28 | -0.26 | 40°11'22.799"N | 104°36'32.224"W | 1.04 | |
| 2071.00 | 0.090 | 118.750 | 2070.98 | -1.20 | -1.17 | -0.31 | 40°11'22.800"N | 104°36'32.224"W | 0.33 | |
| 2166.00 | 0.100 | 137.110 | 2165.98 | -1.28 | -1.26 | -0.19 | 40°11'22.800"N | 104°36'32.223"W | 0.03 | |
| 2261.00 | 0.130 | 328.300 | 2260.98 | -1.25 | -1.23 | -0.19 | 40°11'22.800"N | 104°36'32.223"W | 0.24 | |
| 2355.00 | 0.230 | 250.090 | 2354.98 | -1.25 | -1.21 | -0.42 | 40°11'22.800"N | 104°36'32.226"W | 0.26 | |
| 2450.00 | 1.820 | 69.330 | 2449.96 | -0.65 | -0.74 | 0.81 | 40°11'22.805"N | 104°36'32.210"W | 2.16 | |
| 2545.00 | 3.650 | 80.300 | 2544.85 | 0.88 | 0.30 | 5.20 | 40°11'22.814"N | 104°36'32.153"W | 1.99 | |
| 2639.00 | 5.210 | 92.530 | 2638.57 | 1.99 | 0.62 | 12.42 | 40°11'22.817"N | 104°36'32.060"W | 1.93 | |



Actual Wellpath Report

EMMY STATE H25-718 AWP



| REFERENCE WELLPATH IDENTIFICATION | | | |
|-----------------------------------|---------------------------------|----------|---|
| Operator | NOBLE ENERGY, INC | Slot | SLOT#02 EMMY STATE H25-718(285'FSL&1715'FEL,SEC.25) |
| Area | COLORADO | Well | EMMY STATE H25-718 |
| Field | WELD COUNTY (NOBLE NAD 83 GRID) | Wellbore | EMMY STATE H25-718 AWB |
| Facility | SEC.25-T03N-R65W | | |

| WELLPATH DATA (182 stations) | | | | | | | | | | |
|------------------------------|--------------------|----------------|-------------|-------------------|---------------|--------------|----------------|-----------------|------------------|----------|
| MD [ft] | Inclination [°] | Azimuth [°] | TVD [ft] | Vert Sect [ft] | North [ft] | East [ft] | Latitude | Longitude | DLS [°/100ft] | Comments |
| 2734.00 | 8.830 | 102.280 | 2732.84 | 1.52 | -1.12 | 23.85 | 40°11'22.799"N | 104°36'31.913"W | 4.00 | |
| 2828.00 | 11.770 | 103.540 | 2825.32 | -0.42 | -4.90 | 40.23 | 40°11'22.760"N | 104°36'31.702"W | 3.14 | |
| 2923.00 | 11.880 | 102.910 | 2918.30 | -2.75 | -9.36 | 59.18 | 40°11'22.714"N | 104°36'31.459"W | 0.18 | |
| 3018.00 | 12.320 | 102.680 | 3011.19 | -4.98 | -13.77 | 78.60 | 40°11'22.668"N | 104°36'31.209"W | 0.47 | |
| 3112.00 | 13.500 | 109.290 | 3102.82 | -8.54 | -19.59 | 98.74 | 40°11'22.609"N | 104°36'30.950"W | 2.01 | |
| 3207.00 | 13.500 | 112.430 | 3195.20 | -14.10 | -27.49 | 119.46 | 40°11'22.529"N | 104°36'30.684"W | 0.77 | |
| 3301.00 | 14.970 | 113.740 | 3286.31 | -20.76 | -36.56 | 140.71 | 40°11'22.437"N | 104°36'30.412"W | 1.60 | |
| 3396.00 | 15.840 | 116.700 | 3377.90 | -28.94 | -47.33 | 163.53 | 40°11'22.328"N | 104°36'30.119"W | 1.23 | |
| 3491.00 | 17.130 | 113.360 | 3468.99 | -37.54 | -58.70 | 187.96 | 40°11'22.213"N | 104°36'29.806"W | 1.68 | |
| 3586.00 | 17.190 | 109.070 | 3559.77 | -44.72 | -68.84 | 214.07 | 40°11'22.111"N | 104°36'29.471"W | 1.33 | |
| 3680.00 | 16.700 | 114.230 | 3649.69 | -51.92 | -78.92 | 239.51 | 40°11'22.008"N | 104°36'29.144"W | 1.68 | |
| 3775.00 | 17.670 | 116.500 | 3740.45 | -61.08 | -90.95 | 264.87 | 40°11'21.887"N | 104°36'28.819"W | 1.24 | |
| 3869.00 | 17.650 | 108.470 | 3830.03 | -68.98 | -101.83 | 291.15 | 40°11'21.777"N | 104°36'28.482"W | 2.59 | |
| 3964.00 | 17.790 | 98.380 | 3920.55 | -72.52 | -108.51 | 319.18 | 40°11'21.708"N | 104°36'28.122"W | 3.23 | |
| 4059.00 | 17.580 | 88.100 | 4011.08 | -70.97 | -110.15 | 347.88 | 40°11'21.689"N | 104°36'27.752"W | 3.29 | |
| 4153.00 | 17.620 | 89.950 | 4100.68 | -67.34 | -109.67 | 376.30 | 40°11'21.691"N | 104°36'27.386"W | 0.60 | |
| 4248.00 | 17.580 | 94.210 | 4191.24 | -65.20 | -110.71 | 404.98 | 40°11'21.678"N | 104°36'27.016"W | 1.36 | |
| 4342.00 | 17.410 | 93.170 | 4280.89 | -63.89 | -112.53 | 433.18 | 40°11'21.657"N | 104°36'26.653"W | 0.38 | |
| 4437.00 | 17.110 | 96.870 | 4371.61 | -63.23 | -114.99 | 461.25 | 40°11'21.630"N | 104°36'26.292"W | 1.20 | |
| 4626.00 | 14.930 | 82.770 | 4553.33 | -57.75 | -115.25 | 513.03 | 40°11'21.622"N | 104°36'25.625"W | 2.35 | |
| 4721.00 | 17.820 | 87.080 | 4644.47 | -52.54 | -112.97 | 539.70 | 40°11'21.642"N | 104°36'25.281"W | 3.30 | |
| 4815.00 | 18.010 | 99.170 | 4733.95 | -50.93 | -114.55 | 568.42 | 40°11'21.624"N | 104°36'24.911"W | 3.95 | |
| 4910.00 | 17.870 | 105.080 | 4824.33 | -53.86 | -120.69 | 596.99 | 40°11'21.560"N | 104°36'24.544"W | 1.92 | |
| 5004.00 | 17.780 | 115.410 | 4913.84 | -60.74 | -130.60 | 623.89 | 40°11'21.459"N | 104°36'24.198"W | 3.36 | |
| 5099.00 | 18.240 | 123.320 | 5004.20 | -72.22 | -144.99 | 649.42 | 40°11'21.315"N | 104°36'23.871"W | 2.62 | |
| 5194.00 | 18.130 | 119.990 | 5094.46 | -84.88 | -160.55 | 674.64 | 40°11'21.158"N | 104°36'23.548"W | 1.10 | |
| 5288.00 | 18.180 | 120.090 | 5183.78 | -96.65 | -175.21 | 700.00 | 40°11'21.011"N | 104°36'23.223"W | 0.06 | |
| 5383.00 | 18.200 | 118.570 | 5274.03 | -108.22 | -189.74 | 725.85 | 40°11'20.865"N | 104°36'22.892"W | 0.50 | |
| 5478.00 | 17.250 | 119.040 | 5364.52 | -119.27 | -203.67 | 751.19 | 40°11'20.725"N | 104°36'22.568"W | 1.01 | |
| 5572.00 | 18.200 | 118.260 | 5454.06 | -130.12 | -217.38 | 776.31 | 40°11'20.587"N | 104°36'22.246"W | 1.04 | |



Actual Wellpath Report

EMMY STATE H25-718 AWP



| REFERENCE WELLPATH IDENTIFICATION | | | |
|-----------------------------------|---------------------------------|----------|---|
| Operator | NOBLE ENERGY, INC | Slot | SLOT#02 EMMY STATE H25-718(285'FSL&1715'FEL,SEC.25) |
| Area | COLORADO | Well | EMMY STATE H25-718 |
| Field | WELD COUNTY (NOBLE NAD 83 GRID) | Wellbore | EMMY STATE H25-718 AWB |
| Facility | SEC.25-T03N-R65W | | |

| WELLPATH DATA (182 stations) | | | | | | | | | | |
|------------------------------|--------------------|----------------|-------------|-------------------|---------------|--------------|----------------|-----------------|------------------|----------|
| MD [ft] | Inclination [°] | Azimuth [°] | TVD [ft] | Vert Sect [ft] | North [ft] | East [ft] | Latitude | Longitude | DLS [°/100ft] | Comments |
| 5667.00 | 18.150 | 112.690 | 5544.33 | -139.81 | -230.12 | 803.03 | 40°11'20.458"N | 104°36'21.903"W | 1.83 | |
| 5762.00 | 18.260 | 114.270 | 5634.57 | -148.55 | -241.94 | 830.25 | 40°11'20.339"N | 104°36'21.554"W | 0.53 | |
| 5856.00 | 18.500 | 107.760 | 5723.79 | -156.03 | -252.55 | 857.88 | 40°11'20.231"N | 104°36'21.199"W | 2.20 | |
| 5951.00 | 18.520 | 101.960 | 5813.88 | -160.49 | -260.27 | 887.00 | 40°11'20.152"N | 104°36'20.825"W | 1.94 | |
| 6045.00 | 18.220 | 97.640 | 5903.09 | -162.28 | -265.32 | 916.17 | 40°11'20.099"N | 104°36'20.450"W | 1.48 | |
| 6140.00 | 17.520 | 94.380 | 5993.51 | -162.12 | -268.38 | 945.15 | 40°11'20.066"N | 104°36'20.077"W | 1.28 | |
| 6234.00 | 17.650 | 99.630 | 6083.13 | -162.44 | -271.85 | 973.31 | 40°11'20.029"N | 104°36'19.715"W | 1.69 | |
| 6329.00 | 17.390 | 99.920 | 6173.72 | -164.15 | -276.70 | 1001.49 | 40°11'19.978"N | 104°36'19.352"W | 0.29 | |
| 6423.00 | 17.660 | 92.090 | 6263.37 | -163.96 | -279.64 | 1029.58 | 40°11'19.946"N | 104°36'18.991"W | 2.52 | |
| 6518.00 | 17.680 | 68.320 | 6354.00 | -156.10 | -274.83 | 1057.42 | 40°11'19.991"N | 104°36'18.631"W | 7.55 | |
| 6613.00 | 20.280 | 48.020 | 6443.93 | -137.00 | -258.47 | 1083.10 | 40°11'20.150"N | 104°36'18.298"W | 7.42 | |
| 6707.00 | 26.290 | 32.570 | 6530.31 | -106.09 | -229.98 | 1106.46 | 40°11'20.429"N | 104°36'17.994"W | 9.07 | |
| 6802.00 | 34.700 | 22.360 | 6612.15 | -61.11 | -187.14 | 1128.12 | 40°11'20.851"N | 104°36'17.709"W | 10.37 | |
| 6896.00 | 42.330 | 25.760 | 6685.66 | -5.45 | -133.80 | 1152.10 | 40°11'21.375"N | 104°36'17.393"W | 8.42 | |
| 6991.00 | 51.340 | 22.690 | 6750.59 | 60.45 | -70.64 | 1180.37 | 40°11'21.997"N | 104°36'17.021"W | 9.77 | |
| 7085.00 | 59.940 | 20.170 | 6803.60 | 135.32 | 1.55 | 1208.61 | 40°11'22.707"N | 104°36'16.647"W | 9.41 | |
| 7180.00 | 63.860 | 13.240 | 6848.38 | 217.69 | 81.76 | 1232.58 | 40°11'23.497"N | 104°36'16.328"W | 7.64 | |
| 7275.00 | 71.190 | 9.670 | 6884.68 | 305.05 | 167.73 | 1249.93 | 40°11'24.345"N | 104°36'16.093"W | 8.46 | |
| 7369.00 | 79.940 | 5.670 | 6908.10 | 395.96 | 257.85 | 1262.00 | 40°11'25.234"N | 104°36'15.926"W | 10.18 | |
| 7464.00 | 87.260 | 1.680 | 6918.69 | 490.18 | 351.98 | 1268.02 | 40°11'26.164"N | 104°36'15.836"W | 8.76 | |
| 7558.00 | 89.880 | 357.290 | 6921.03 | 583.44 | 445.92 | 1267.18 | 40°11'27.092"N | 104°36'15.835"W | 5.44 | |
| 7653.00 | 89.880 | 355.910 | 6921.23 | 677.06 | 540.75 | 1261.54 | 40°11'28.030"N | 104°36'15.895"W | 1.45 | |
| 7747.00 | 89.540 | 354.710 | 6921.71 | 769.32 | 634.43 | 1253.86 | 40°11'28.956"N | 104°36'15.982"W | 1.33 | |
| 7842.00 | 89.690 | 353.980 | 6922.35 | 862.24 | 728.96 | 1244.50 | 40°11'29.891"N | 104°36'16.090"W | 0.78 | |
| 7937.00 | 89.750 | 354.400 | 6922.81 | 955.10 | 823.47 | 1234.88 | 40°11'30.826"N | 104°36'16.202"W | 0.45 | |
| 8031.00 | 90.740 | 355.140 | 6922.41 | 1047.19 | 917.08 | 1226.31 | 40°11'31.752"N | 104°36'16.300"W | 1.31 | |
| 8126.00 | 91.320 | 355.670 | 6920.70 | 1140.44 | 1011.76 | 1218.70 | 40°11'32.688"N | 104°36'16.386"W | 0.83 | |
| 8220.00 | 90.490 | 357.320 | 6919.21 | 1233.04 | 1105.57 | 1212.96 | 40°11'33.616"N | 104°36'16.448"W | 1.96 | |
| 8410.00 | 90.460 | 0.050 | 6917.64 | 1421.31 | 1295.49 | 1208.60 | 40°11'35.493"N | 104°36'16.479"W | 1.44 | |
| 8504.00 | 90.370 | 3.620 | 6916.96 | 1515.00 | 1389.43 | 1211.61 | 40°11'36.421"N | 104°36'16.428"W | 3.80 | |



Actual Wellpath Report
EMMY STATE H25-718 AWP
Page 5 of 10



| REFERENCE WELLPATH IDENTIFICATION | | | |
|-----------------------------------|---------------------------------|----------|---|
| Operator | NOBLE ENERGY, INC | Slot | SLOT#02 EMMY STATE H25-718(285'FSL&1715'FEL,SEC.25) |
| Area | COLORADO | Well | EMMY STATE H25-718 |
| Field | WELD COUNTY (NOBLE NAD 83 GRID) | Wellbore | EMMY STATE H25-718 AWB |
| Facility | SEC.25-T03N-R65W | | |

| WELLPATH DATA (182 stations) | | | | | | | | | | |
|------------------------------|--------------------|----------------|-------------|-------------------|---------------|--------------|----------------|-----------------|------------------|----------|
| MD [ft] | Inclination [°] | Azimuth [°] | TVD [ft] | Vert Sect [ft] | North [ft] | East [ft] | Latitude | Longitude | DLS [°/100ft] | Comments |
| 8599.00 | 90.620 | 2.200 | 6916.14 | 1609.82 | 1484.30 | 1216.43 | 40°11'37.358"N | 104°36'16.354"W | 1.52 | |
| 8693.00 | 90.770 | 4.840 | 6915.00 | 1703.69 | 1578.10 | 1222.20 | 40°11'38.284"N | 104°36'16.267"W | 2.81 | |
| 8788.00 | 90.620 | 3.940 | 6913.84 | 1798.63 | 1672.82 | 1229.47 | 40°11'39.220"N | 104°36'16.161"W | 0.96 | |
| 8882.00 | 90.620 | 2.430 | 6912.83 | 1892.48 | 1766.66 | 1234.69 | 40°11'40.146"N | 104°36'16.081"W | 1.61 | |
| 8977.00 | 90.520 | 359.560 | 6911.88 | 1987.05 | 1861.64 | 1236.34 | 40°11'41.085"N | 104°36'16.048"W | 3.02 | |
| 9072.00 | 90.650 | 359.540 | 6910.91 | 2081.37 | 1956.63 | 1235.60 | 40°11'42.023"N | 104°36'16.045"W | 0.14 | |
| 9166.00 | 90.800 | 357.780 | 6909.72 | 2174.52 | 2050.59 | 1233.40 | 40°11'42.952"N | 104°36'16.061"W | 1.88 | |
| 9261.00 | 90.650 | 354.450 | 6908.52 | 2267.98 | 2145.35 | 1226.96 | 40°11'43.889"N | 104°36'16.132"W | 3.51 | |
| 9355.00 | 90.770 | 354.390 | 6907.36 | 2359.94 | 2238.90 | 1217.82 | 40°11'44.814"N | 104°36'16.237"W | 0.14 | |
| 9450.00 | 90.800 | 355.530 | 6906.05 | 2453.06 | 2333.52 | 1209.48 | 40°11'45.750"N | 104°36'16.333"W | 1.20 | |
| 9544.00 | 90.650 | 356.070 | 6904.86 | 2545.46 | 2427.26 | 1202.59 | 40°11'46.677"N | 104°36'16.409"W | 0.60 | |
| 9639.00 | 90.680 | 355.070 | 6903.76 | 2638.78 | 2521.97 | 1195.26 | 40°11'47.614"N | 104°36'16.491"W | 1.05 | |
| 9734.00 | 90.710 | 353.120 | 6902.61 | 2731.60 | 2616.45 | 1185.48 | 40°11'48.548"N | 104°36'16.605"W | 2.05 | |
| 9828.00 | 90.770 | 357.010 | 6901.40 | 2823.75 | 2710.08 | 1177.40 | 40°11'49.474"N | 104°36'16.697"W | 4.14 | |
| 9923.00 | 90.550 | 0.380 | 6900.30 | 2917.89 | 2805.03 | 1175.24 | 40°11'50.413"N | 104°36'16.712"W | 3.55 | |
| 10018.00 | 90.650 | 4.770 | 6899.31 | 3012.65 | 2899.91 | 1179.50 | 40°11'51.350"N | 104°36'16.645"W | 4.62 | |
| 10112.00 | 90.620 | 10.110 | 6898.26 | 3106.59 | 2993.08 | 1191.67 | 40°11'52.269"N | 104°36'16.476"W | 5.68 | |
| 10207.00 | 90.740 | 11.460 | 6897.14 | 3201.30 | 3086.39 | 1209.45 | 40°11'53.190"N | 104°36'16.235"W | 1.43 | |
| 10301.00 | 90.770 | 7.960 | 6895.90 | 3295.12 | 3179.02 | 1225.30 | 40°11'54.104"N | 104°36'16.019"W | 3.72 | |
| 10396.00 | 90.710 | 2.960 | 6894.67 | 3390.07 | 3273.55 | 1234.33 | 40°11'55.037"N | 104°36'15.890"W | 5.26 | |
| 10490.00 | 90.740 | 0.140 | 6893.48 | 3483.72 | 3367.50 | 1236.87 | 40°11'55.965"N | 104°36'15.845"W | 3.00 | |
| 10585.00 | 90.830 | 0.180 | 6892.18 | 3578.16 | 3462.49 | 1237.14 | 40°11'56.903"N | 104°36'15.829"W | 0.10 | |
| 10680.00 | 90.830 | 358.810 | 6890.80 | 3672.46 | 3557.48 | 1236.30 | 40°11'57.842"N | 104°36'15.828"W | 1.44 | |
| 10774.00 | 90.920 | 358.280 | 6889.37 | 3765.58 | 3651.44 | 1233.92 | 40°11'58.771"N | 104°36'15.846"W | 0.57 | |
| 10869.00 | 89.570 | 355.330 | 6888.96 | 3859.25 | 3746.28 | 1228.62 | 40°11'59.708"N | 104°36'15.902"W | 3.41 | |
| 10964.00 | 89.690 | 354.350 | 6889.57 | 3952.34 | 3840.89 | 1220.08 | 40°12'00.644"N | 104°36'16.000"W | 1.04 | |
| 11058.00 | 89.750 | 354.950 | 6890.03 | 4044.38 | 3934.48 | 1211.31 | 40°12'01.570"N | 104°36'16.101"W | 0.64 | |
| 11153.00 | 89.880 | 356.760 | 6890.34 | 4137.78 | 4029.22 | 1204.45 | 40°12'02.507"N | 104°36'16.177"W | 1.91 | |
| 11248.00 | 89.820 | 357.690 | 6890.59 | 4231.58 | 4124.11 | 1199.85 | 40°12'03.445"N | 104°36'16.224"W | 0.98 | |
| 11342.00 | 89.690 | 359.540 | 6890.99 | 4324.72 | 4218.08 | 1197.58 | 40°12'04.374"N | 104°36'16.241"W | 1.97 | |



Actual Wellpath Report
EMMY STATE H25-718 AWP
Page 6 of 10



| REFERENCE WELLPATH IDENTIFICATION | | | |
|-----------------------------------|---------------------------------|----------|---|
| Operator | NOBLE ENERGY, INC | Slot | SLOT#02 EMMY STATE H25-718(285'FSL&1715'FEL,SEC.25) |
| Area | COLORADO | Well | EMMY STATE H25-718 |
| Field | WELD COUNTY (NOBLE NAD 83 GRID) | Wellbore | EMMY STATE H25-718 AWB |
| Facility | SEC.25-T03N-R65W | | |

| WELLPATH DATA (182 stations) | | | | | | | | | | |
|------------------------------|--------------------|----------------|-------------|-------------------|---------------|--------------|----------------|-----------------|------------------|----------|
| MD [ft] | Inclination [°] | Azimuth [°] | TVD [ft] | Vert Sect [ft] | North [ft] | East [ft] | Latitude | Longitude | DLS [°/100ft] | Comments |
| 11436.00 | 89.820 | 2.420 | 6891.39 | 4418.29 | 4312.05 | 1199.18 | 40°12'05.302"N | 104°36'16.208"W | 3.07 | |
| 11531.00 | 89.690 | 5.730 | 6891.80 | 4513.20 | 4406.80 | 1205.93 | 40°12'06.238"N | 104°36'16.108"W | 3.49 | |
| 11626.00 | 90.090 | 6.760 | 6891.98 | 4608.20 | 4501.23 | 1216.27 | 40°12'07.170"N | 104°36'15.963"W | 1.16 | |
| 11720.00 | 90.030 | 5.870 | 6891.88 | 4702.20 | 4594.66 | 1226.61 | 40°12'08.092"N | 104°36'15.818"W | 0.95 | |
| 11815.00 | 89.970 | 5.200 | 6891.88 | 4797.19 | 4689.22 | 1235.77 | 40°12'09.025"N | 104°36'15.687"W | 0.71 | |
| 11909.00 | 89.910 | 3.930 | 6891.98 | 4891.14 | 4782.92 | 1243.25 | 40°12'09.951"N | 104°36'15.579"W | 1.35 | |
| 12004.00 | 89.910 | 1.120 | 6892.13 | 4985.92 | 4877.82 | 1247.44 | 40°12'10.888"N | 104°36'15.512"W | 2.96 | |
| 12099.00 | 89.910 | 357.070 | 6892.28 | 5080.14 | 4972.79 | 1245.94 | 40°12'11.826"N | 104°36'15.519"W | 4.26 | |
| 12193.00 | 89.970 | 356.540 | 6892.38 | 5172.84 | 5066.64 | 1240.70 | 40°12'12.754"N | 104°36'15.575"W | 0.57 | |
| 12382.00 | 89.850 | 355.470 | 6892.67 | 5358.76 | 5255.18 | 1227.53 | 40°12'14.619"N | 104°36'15.720"W | 0.57 | |
| 12477.00 | 89.940 | 356.690 | 6892.85 | 5452.23 | 5349.95 | 1221.03 | 40°12'15.556"N | 104°36'15.791"W | 1.29 | |
| 12571.00 | 90.030 | 356.250 | 6892.87 | 5544.84 | 5443.77 | 1215.25 | 40°12'16.484"N | 104°36'15.853"W | 0.48 | |
| 12666.00 | 90.030 | 356.430 | 6892.82 | 5638.39 | 5538.58 | 1209.18 | 40°12'17.421"N | 104°36'15.919"W | 0.19 | |
| 12761.00 | 90.060 | 354.320 | 6892.75 | 5731.65 | 5633.27 | 1201.52 | 40°12'18.357"N | 104°36'16.006"W | 2.22 | |
| 12855.00 | 89.940 | 355.460 | 6892.75 | 5823.77 | 5726.89 | 1193.15 | 40°12'19.283"N | 104°36'16.101"W | 1.22 | |
| 12950.00 | 90.000 | 357.380 | 6892.80 | 5917.34 | 5821.70 | 1187.22 | 40°12'20.221"N | 104°36'16.165"W | 2.02 | |
| 13044.00 | 89.780 | 0.660 | 6892.98 | 6010.56 | 5915.67 | 1185.61 | 40°12'21.150"N | 104°36'16.174"W | 3.50 | |
| 13139.00 | 89.750 | 4.980 | 6893.37 | 6105.35 | 6010.54 | 1190.28 | 40°12'22.087"N | 104°36'16.101"W | 4.55 | |
| 13234.00 | 90.180 | 4.530 | 6893.43 | 6200.32 | 6105.21 | 1198.16 | 40°12'23.021"N | 104°36'15.988"W | 0.66 | |
| 13328.00 | 90.060 | 0.020 | 6893.23 | 6294.05 | 6199.11 | 1201.89 | 40°12'23.949"N | 104°36'15.927"W | 4.80 | |
| 13423.00 | 90.180 | 359.030 | 6893.03 | 6388.38 | 6294.10 | 1201.10 | 40°12'24.888"N | 104°36'15.925"W | 1.05 | |
| 13517.00 | 90.220 | 2.250 | 6892.70 | 6481.90 | 6388.09 | 1202.15 | 40°12'25.816"N | 104°36'15.899"W | 3.43 | |
| 13611.00 | 90.340 | 2.400 | 6892.24 | 6575.66 | 6482.01 | 1205.97 | 40°12'26.744"N | 104°36'15.838"W | 0.20 | |
| 13706.00 | 90.030 | 1.740 | 6891.94 | 6670.40 | 6576.94 | 1209.40 | 40°12'27.682"N | 104°36'15.781"W | 0.77 | |
| 13801.00 | 90.250 | 1.190 | 6891.70 | 6765.05 | 6671.91 | 1211.83 | 40°12'28.620"N | 104°36'15.738"W | 0.62 | |
| 13895.00 | 90.150 | 359.890 | 6891.38 | 6858.56 | 6765.91 | 1212.71 | 40°12'29.548"N | 104°36'15.714"W | 1.39 | |
| 13990.00 | 90.220 | 358.400 | 6891.07 | 6952.81 | 6860.89 | 1211.29 | 40°12'30.487"N | 104°36'15.720"W | 1.57 | |
| 14084.00 | 90.250 | 357.090 | 6890.68 | 7045.75 | 6954.82 | 1207.60 | 40°12'31.416"N | 104°36'15.755"W | 1.39 | |
| 14179.00 | 89.600 | 356.900 | 6890.81 | 7139.48 | 7049.68 | 1202.62 | 40°12'32.354"N | 104°36'15.807"W | 0.71 | |
| 14273.00 | 89.660 | 357.820 | 6891.42 | 7232.32 | 7143.58 | 1198.29 | 40°12'33.282"N | 104°36'15.851"W | 0.98 | |



Actual Wellpath Report
EMMY STATE H25-718 AWP
Page 7 of 10



| REFERENCE WELLPATH IDENTIFICATION | | | |
|-----------------------------------|---------------------------------|----------|---|
| Operator | NOBLE ENERGY, INC | Slot | SLOT#02 EMMY STATE H25-718(285'FSL&1715'FEL,SEC.25) |
| Area | COLORADO | Well | EMMY STATE H25-718 |
| Field | WELD COUNTY (NOBLE NAD 83 GRID) | Wellbore | EMMY STATE H25-718 AWB |
| Facility | SEC.25-T03N-R65W | | |

| WELLPATH DATA (182 stations) | | | | | | | | | | |
|------------------------------|--------------------|----------------|-------------|-------------------|---------------|--------------|----------------|-----------------|------------------|----------|
| MD [ft] | Inclination [°] | Azimuth [°] | TVD [ft] | Vert Sect [ft] | North [ft] | East [ft] | Latitude | Longitude | DLS [°/100ft] | Comments |
| 14368.00 | 89.690 | 357.990 | 6891.95 | 7326.29 | 7238.52 | 1194.81 | 40°12'34.220"N | 104°36'15.883"W | 0.18 | |
| 14462.00 | 89.780 | 357.640 | 6892.39 | 7419.25 | 7332.45 | 1191.23 | 40°12'35.149"N | 104°36'15.917"W | 0.38 | |
| 14557.00 | 89.380 | 359.040 | 6893.09 | 7513.31 | 7427.40 | 1188.48 | 40°12'36.087"N | 104°36'15.940"W | 1.53 | |
| 14651.00 | 89.420 | 359.440 | 6894.07 | 7606.58 | 7521.39 | 1187.23 | 40°12'37.016"N | 104°36'15.944"W | 0.43 | |
| 14746.00 | 89.750 | 358.470 | 6894.76 | 7700.79 | 7616.37 | 1185.50 | 40°12'37.955"N | 104°36'15.954"W | 1.08 | |
| 14840.00 | 89.780 | 358.370 | 6895.14 | 7793.89 | 7710.33 | 1182.91 | 40°12'38.884"N | 104°36'15.975"W | 0.11 | |
| 14935.00 | 89.820 | 355.740 | 6895.47 | 7887.63 | 7805.20 | 1178.03 | 40°12'39.822"N | 104°36'16.026"W | 2.77 | |
| 15029.00 | 90.120 | 354.420 | 6895.52 | 7979.81 | 7898.85 | 1169.96 | 40°12'40.748"N | 104°36'16.118"W | 1.44 | |
| 15124.00 | 90.150 | 354.670 | 6895.30 | 8072.80 | 7993.42 | 1160.93 | 40°12'41.683"N | 104°36'16.222"W | 0.27 | |
| 15219.00 | 90.000 | 355.760 | 6895.18 | 8166.01 | 8088.09 | 1153.01 | 40°12'42.619"N | 104°36'16.311"W | 1.16 | |
| 15313.00 | 90.310 | 358.080 | 6894.92 | 8258.73 | 8181.94 | 1147.96 | 40°12'43.547"N | 104°36'16.364"W | 2.49 | |
| 15408.00 | 90.150 | 358.680 | 6894.54 | 8352.81 | 8276.90 | 1145.27 | 40°12'44.486"N | 104°36'16.387"W | 0.65 | |
| 15503.00 | 90.120 | 0.080 | 6894.32 | 8447.11 | 8371.90 | 1144.24 | 40°12'45.425"N | 104°36'16.387"W | 1.47 | |
| 15597.00 | 90.220 | 0.700 | 6894.04 | 8540.60 | 8465.89 | 1144.88 | 40°12'46.354"N | 104°36'16.367"W | 0.67 | |
| 15692.00 | 90.220 | 2.460 | 6893.67 | 8635.26 | 8560.85 | 1147.50 | 40°12'47.292"N | 104°36'16.321"W | 1.85 | |
| 15786.00 | 89.970 | 4.860 | 6893.52 | 8729.15 | 8654.65 | 1153.50 | 40°12'48.218"N | 104°36'16.231"W | 2.57 | |
| 15881.00 | 90.060 | 3.810 | 6893.49 | 8824.09 | 8749.38 | 1160.68 | 40°12'49.153"N | 104°36'16.126"W | 1.11 | |
| 15975.00 | 90.250 | 1.480 | 6893.24 | 8917.89 | 8843.27 | 1165.02 | 40°12'50.081"N | 104°36'16.058"W | 2.49 | |
| 16069.00 | 90.060 | 359.000 | 6892.98 | 9011.35 | 8937.27 | 1165.42 | 40°12'51.009"N | 104°36'16.041"W | 2.65 | |
| 16164.00 | 90.180 | 357.660 | 6892.78 | 9105.41 | 9032.22 | 1162.65 | 40°12'51.948"N | 104°36'16.064"W | 1.42 | |
| 16258.00 | 89.970 | 356.320 | 6892.66 | 9198.16 | 9126.09 | 1157.71 | 40°12'52.876"N | 104°36'16.116"W | 1.44 | |
| 16353.00 | 89.880 | 357.550 | 6892.79 | 9291.87 | 9220.95 | 1152.63 | 40°12'53.814"N | 104°36'16.169"W | 1.30 | |
| 16448.00 | 90.000 | 359.340 | 6892.89 | 9385.97 | 9315.91 | 1150.05 | 40°12'54.753"N | 104°36'16.190"W | 1.89 | |
| 16542.00 | 89.970 | 359.060 | 6892.91 | 9479.24 | 9409.90 | 1148.74 | 40°12'55.681"N | 104°36'16.194"W | 0.30 | |
| 16637.00 | 90.150 | 0.240 | 6892.81 | 9573.58 | 9504.90 | 1148.16 | 40°12'56.620"N | 104°36'16.189"W | 1.26 | |
| 16731.00 | 90.030 | 2.740 | 6892.66 | 9667.24 | 9598.86 | 1150.61 | 40°12'57.548"N | 104°36'16.146"W | 2.66 | |
| 16826.00 | 90.030 | 2.650 | 6892.61 | 9762.04 | 9693.76 | 1155.07 | 40°12'58.486"N | 104°36'16.076"W | 0.09 | |
| 16920.00 | 90.030 | 359.550 | 6892.56 | 9855.64 | 9787.73 | 1156.88 | 40°12'59.414"N | 104°36'16.040"W | 3.30 | |
| 17110.00 | 90.000 | 358.030 | 6892.51 | 10043.98 | 9977.68 | 1152.86 | 40°13'01.291"N | 104°36'16.067"W | 0.80 | |
| 17205.00 | 90.030 | 358.540 | 6892.49 | 10138.04 | 10072.64 | 1150.02 | 40°13'02.230"N | 104°36'16.092"W | 0.54 | |



Actual Wellpath Report

EMMY STATE H25-718 AWP



| REFERENCE WELLPATH IDENTIFICATION | | | |
|-----------------------------------|---------------------------------|----------|---|
| Operator | NOBLE ENERGY, INC | Slot | SLOT#02 EMMY STATE H25-718(285'FSL&1715'FEL,SEC.25) |
| Area | COLORADO | Well | EMMY STATE H25-718 |
| Field | WELD COUNTY (NOBLE NAD 83 GRID) | Wellbore | EMMY STATE H25-718 AWB |
| Facility | SEC.25-T03N-R65W | | |

| WELLPATH DATA (182 stations) | | | | | | | | | | |
|------------------------------|--------------------|----------------|-------------|-------------------|---------------|--------------|----------------|-----------------|------------------|----------------------|
| MD [ft] | Inclination [°] | Azimuth [°] | TVD [ft] | Vert Sect [ft] | North [ft] | East [ft] | Latitude | Longitude | DLS [°/100ft] | Comments |
| 17299.00 | 90.060 | 359.580 | 6892.42 | 10231.27 | 10166.62 | 1148.48 | 40°13'03.159"N | 104°36'16.099"W | 1.11 | Last BHI MWD Surveys |
| 17344.00 | 90.060 | 359.580 | 6892.37 | 10275.96 | 10211.62 | 1148.15 | 40°13'03.604"N | 104°36'16.098"W | 0.00 | Projection to Bit |

| HOLE & CASING SECTIONS - Ref Wellbore: EMMY STATE H25-718 AWB Ref Wellpath: EMMY STATE H25-718 AWP | | | | | | | | | |
|---|------------------|----------------|------------------|-------------------|-----------------|-------------------|-------------------|-----------------|-----------------|
| String/Diameter | Start MD [ft] | End MD [ft] | Interval [ft] | Start TVD [ft] | End TVD [ft] | Start N/S [ft] | Start E/W [ft] | End N/S [ft] | End E/W [ft] |
| 13.5in Open Hole | 30.00 | 1933.00 | 1903.00 | 30.00 | 1932.98 | 0.03 | 0.01 | -1.58 | -0.06 |
| 9.625in Casing Surface | 30.00 | 1933.00 | 1903.00 | 30.00 | 1932.98 | 0.03 | 0.01 | -1.58 | -0.06 |
| 8.5in Open Hole | 30.00 | 30.00 | 0.00 | 30.00 | 30.00 | 0.03 | 0.01 | 0.03 | 0.01 |



Actual Wellpath Report

EMMY STATE H25-718 AWP

Page 9 of 10



| REFERENCE WELLPATH IDENTIFICATION | | | |
|-----------------------------------|---------------------------------|----------|---|
| Operator | NOBLE ENERGY, INC | Slot | SLOT#02 EMMY STATE H25-718(285'FSL&1715'FEL,SEC.25) |
| Area | COLORADO | Well | EMMY STATE H25-718 |
| Field | WELD COUNTY (NOBLE NAD 83 GRID) | Wellbore | EMMY STATE H25-718 AWB |
| Facility | SEC.25-T03N-R65W | | |

| TARGETS | | | | | | | | |
|--|-------------|---------------|--------------|----------------------|-----------------------|----------------|-----------------|---------|
| Name | TVD [ft] | North [ft] | East [ft] | Grid East [US ft] | Grid North [US ft] | Latitude | Longitude | Shape |
| EMMY STATE H25-785 SECTION 24-T3N-R65W | -12.00 | -22.72 | -2271.30 | 3246661.19 | 1313167.41 | 40°11'22.812"N | 104°37'01.488"W | polygon |
| | | | | | | | | |
| EMMY STATE H25-785 SECTION 25-T3N-R65W | -12.00 | -22.72 | -2271.30 | 3246661.19 | 1313167.41 | 40°11'22.812"N | 104°37'01.488"W | polygon |
| | | | | | | | | |
| EMMY STATE H25-718 REV-1 BHL(100'FNL&515'FEL,SEC.24) | 6864.92 | 10212.37 | 1137.41 | 3250069.75 | 1323402.04 | 40°13'03.612"N | 104°36'16.236"W | point |
| | | | | | | | | |
| EMMY STATE H25-718/Target#2 | 6865.11 | 5900.14 | 1177.94 | 3250110.28 | 1319090.00 | 40°12'20.997"N | 104°36'16.275"W | point |
| | | | | | | | | |
| EMMY STATE H25-718 REV-2 BHL(100'FNL&515'FEL,SEC.24) | 6892.46 | 10212.37 | 1137.41 | 3250069.75 | 1323402.04 | 40°13'03.612"N | 104°36'16.236"W | point |
| | | | | | | | | |
| EMMY STATE H25-718/REV-2 Target#2 | 6892.65 | 3487.41 | 1200.60 | 3250132.94 | 1316677.38 | 40°11'57.153"N | 104°36'16.297"W | point |
| | | | | | | | | |
| EMMY STATE H25-718 LANDING POINT | 6922.00 | 360.00 | 1230.00 | 3250162.34 | 1313550.11 | 40°11'26.247"N | 104°36'16.325"W | point |
| | | | | | | | | |
| EMMY STATE H25-718/Target #1 | 6922.00 | 899.10 | 1224.94 | 3250157.28 | 1314089.19 | 40°11'31.575"N | 104°36'16.320"W | point |
| | | | | | | | | |

| WELLPATH COMPOSITION - Ref Wellbore: EMMY STATE H25-718 AWB Ref Wellpath: EMMY STATE H25-718 AWP | | | | |
|---|----------------|---|--|------------------------|
| Start MD [ft] | End MD [ft] | Positional Uncertainty Model | Log Name/Comment | Wellbore |
| 0.00 | 1926.00 | Gyrodata standard - Drop gyro or Multi-shot | 3rd Party Surface Gyros <84'-1926'> | EMMY STATE H25-718 AWB |
| 1926.00 | 17299.00 | OWSG MWD rev2 + IFR1 + Multi-Station Correction | BH/ATC 8.5" Hole OWSG MWD rev2+IFR1+MSA <1977'-17299'> | EMMY STATE H25-718 AWB |
| 17299.00 | 17344.00 | Blind Drilling (std) | Projection to bit | EMMY STATE H25-718 AWB |



Actual Wellpath Report

EMMY STATE H25-718 AWP

Page 10 of 10



| REFERENCE WELLPATH IDENTIFICATION | | | |
|-----------------------------------|---------------------------------|----------|---|
| Operator | NOBLE ENERGY, INC | Slot | SLOT#02 EMMY STATE H25-718(285'FSL&1715'FEL,SEC.25) |
| Area | COLORADO | Well | EMMY STATE H25-718 |
| Field | WELD COUNTY (NOBLE NAD 83 GRID) | Wellbore | EMMY STATE H25-718 AWB |
| Facility | SEC.25-T03N-R65W | | |

| WELLPATH COMMENTS | | | | |
|-------------------|--------------------|----------------|-------------|----------------------|
| MD [ft] | Inclination [°] | Azimuth [°] | TVD [ft] | Comment |
| 1926.00 | 0.760 | 326.670 | 1925.98 | Tie to Surface |
| 17299.00 | 90.060 | 359.580 | 6892.42 | Last BHI MWD Surveys |
| 17344.00 | 90.060 | 359.580 | 6892.37 | Projection to Bit |

| COMMENTS |
|--|
| <div>Wellpath general comments</div> <div>SURFACE LOCATION: SWSE</div> <div>40.18967N</div> <div>104.60895W</div> <div>API #: 05-123-46967</div> |