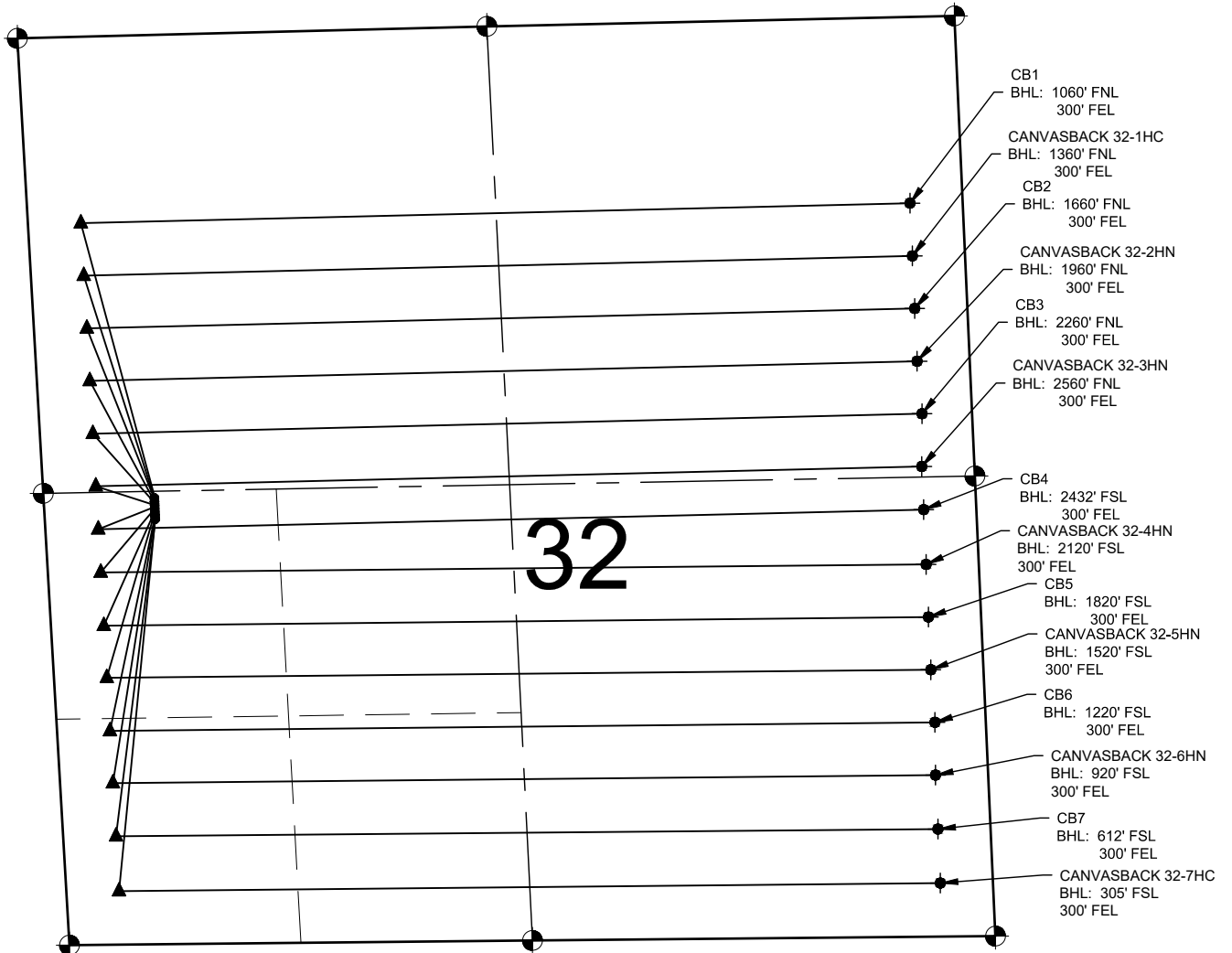


CANVASBACK PAD MULTI-WELL PLAN



NOTES:

- CB1 TO BE AT 2551' FSL & 631' FWL.
BOTTOM HOLE AT 1060' FNL & 300' FEL, SEC. 32.
CANVASBACK 32-1HC TO BE AT 2541' FSL & 630' FWL.
BOTTOM HOLE AT 1360' FNL & 300' FEL, SEC. 32.
- CB2 TO BE AT 2531' FSL & 631' FWL.
BOTTOM HOLE AT 1660' FNL & 300' FEL, SEC. 32.
CANVASBACK 32-2HN TO BE AT 2521' FSL & 630' FWL.
BOTTOM HOLE AT 1960' FNL & 300' FEL, SEC. 32.
- CB3 TO BE AT 2511' FSL & 631' FWL.
BOTTOM HOLE AT 2260' FNL & 300' FEL, SEC. 32.
CANVASBACK 32-3HN TO BE AT 2501' FSL & 629' FWL.
BOTTOM HOLE AT 2560' FNL & 300' FEL, SEC. 32.
- CB4 TO BE AT 2491' FSL & 631' FWL.
BOTTOM HOLE AT 2432' FSL & 300' FEL, SEC. 32.
CANVASBACK 32-4HN TO BE AT 2481' FSL & 629' FWL.
BOTTOM HOLE AT 2120' FSL & 300' FEL, SEC. 32.
- CB5 TO BE AT 2471' FSL & 631' FWL.
BOTTOM HOLE AT 1820' FSL & 300' FEL, SEC. 32.
CANVASBACK 32-5HN TO BE AT 2461' FSL & 628' FWL.
BOTTOM HOLE AT 1520' FSL & 300' FEL, SEC. 32.
- CB6 TO BE AT 2451' FSL & 631' FWL.
BOTTOM HOLE AT 1220' FSL & 300' FEL, SEC. 32.
CANVASBACK 32-6HN TO BE AT 2441' FSL & 628' FWL.
BOTTOM HOLE AT 920' FSL & 300' FEL, SEC. 32.
- CB7 TO BE AT 2431' FSL & 631' FWL.
BOTTOM HOLE AT 612' FSL & 300' FEL, SEC. 32.
CANVASBACK 32-7HC TO BE AT 2421' FSL & 628' FWL.
BOTTOM HOLE AT 305' FSL & 300' FEL, SEC. 32.

LEGEND

- = EXISTING MONUMENT
- = CALCULATED POSITION
- = PROPOSED WELL
- ◆ = EXISTING WELL
- ▲ = LANDING POINT
- BHL = BOTTOM HOLE LOCATION

NOTES:

1. THIS FIELD SURVEY CONFORMS TO THE MINIMUM STANDARDS SET BY THE C.O.G.C.C., RULE NO. 215
2. ALL DISTANCES AND BEARINGS SHOWN HEREON ARE GROUND VALUES AS GPS MEASURED IN THE FIELD, WITH TIES TO WELLS MEASURED PERPENDICULAR TO SECTION LINES. THIS LOW DISTORTION PROJECTION (LDP) IS BASED ON THE NORTH AMERICAN DATUM OF 1983, U.S. SURVEY FOOT WITH A LATITUDE ORIGIN OF 40.655085°N, A CENTRAL MERIDIAN LONGITUDE OF 104.086861°W, AND A SCALE FACTOR ON THE CENTRAL MERIDIAN OF 1.000232 (EXACT). THE LDP BASIS OF BEARINGS IS GEODETIC NORTH.
3. FIELD VERIFICATION OF MONUMENTS COMPLETED WITHIN 1 YEAR OF SIGNATURE DATE.



7535 Hilltop Circle
Denver, CO 80221
(303) 928-7128
www.ascentgeomatics.com

FIELD DATE:
10-19-18

DRAWING DATE:
11-06-18

BY:
IIC

CHECKED:
MMP

SITE NAME:
CANVASBACK PAD

SURFACE LOCATION:
NW 1/4 SW 1/4 SEC. 32 T9N, R60W, 6TH P.M.
WELD COUNTY, COLORADO

PREPARED FOR:

