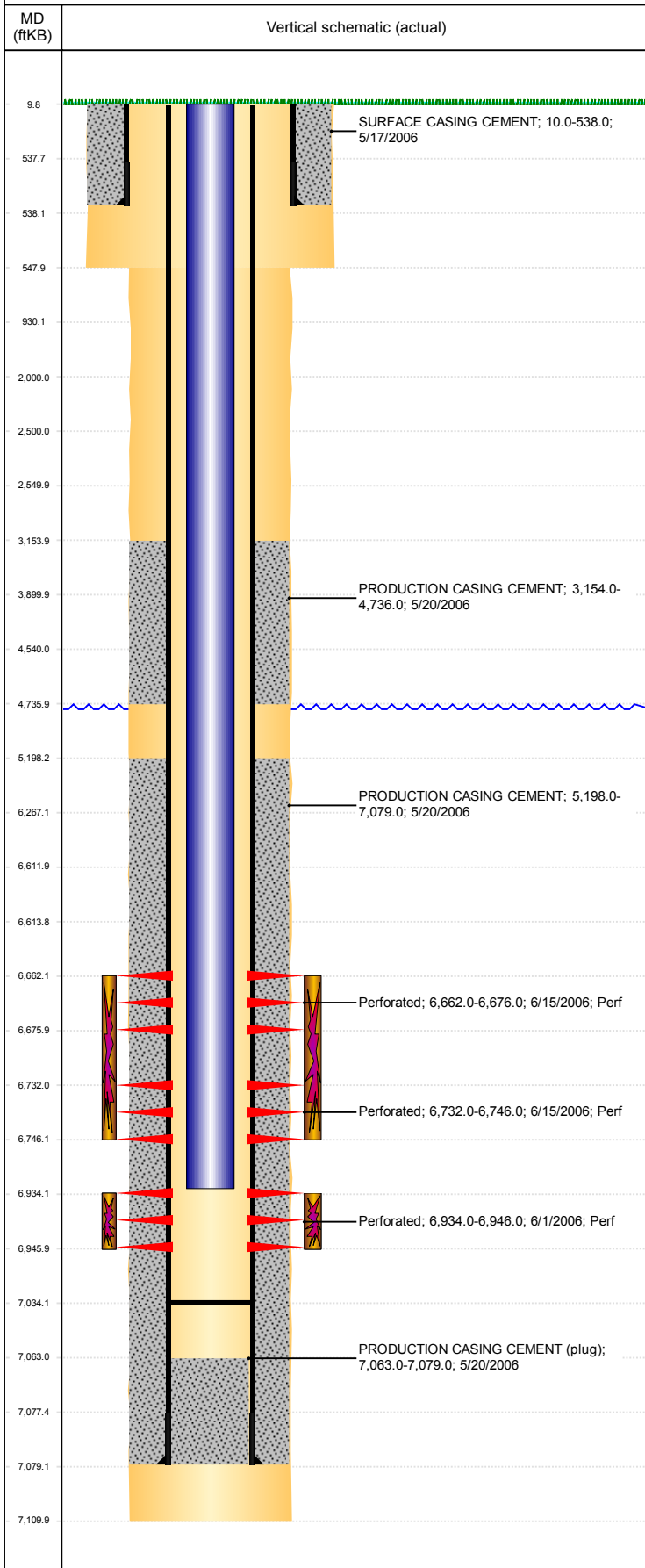


Well Name: THOMPSON C28-25

VERTICAL, ORIGINAL HOLE, 12/4/2018 11:31:35 AM



Well Header									
API 05-123-23739		Business Unit DJ BASIN			District 15		Well Config VERTICAL		
KB - GL / MSL (ft... 10.00		Spud Date 5/16/2006		P & A Date		Well Production Status SI			SoRT No
Comment POOR CMT BOND 4770-5200									
Surface Location (Congressional)									
Qtr 3 NE	Qtr 4 SW	Section 28	Twonshp 4	Twonsh... N	Range 64	Rng E/... W	Actual Latitude (°) 40.27984617	Actual Longitude (°) -104.56062442	
Wellbore Sections									
Section Des			Size (in)			Act Top, MD (ftKB)		Act Btm, MD (ftKB)	
SURFACE			12 1/4			10		548	
PRODUCTION			7 7/8			548		7,110	
Casing Strings									
Csg Des		Run Date		OD (in)	Wt/Len (lb/ft)	Grade	Top, MD (ftKB)	MD (ftKB)	
Surface		5/17/2006		8 5/8	24.00	J-55	10.0	538.0	
Production		5/20/2006		4 1/2	11.60	M-80	10.0	7,079.0	
Cement									
Des				Start Date		Top (ftKB)		Btm (ftKB)	
SURFACE CASING CEMENT				5/17/2006		10.0		538.0	
PRODUCTION CASING CEMENT				5/20/2006		3,154.0		4,736.0	
PRODUCTION CASING CEMENT				5/20/2006		5,198.0		7,079.0	
Zone Statuses									
Zone Name	Status Date	Status	Fluid Type	Job				Prod Method	
CODELL	2/26/2010	PR	Water	RE-FRAC, 6/15/2010 11:30				Flowing	
CODELL	7/12/2010	PR	Oil					Flowing	
NIOBRARA	2/26/2010	PR	Water					Flowing	
NIOBRARA	10/7/2016	SI							
Perforation Data									
Linked Zone		Bnch/Stg	Entered Shot Total	Top (ftKB)		Btm (ftKB)		Date	
NIOBRARA, ORIGINAL HOLE		A	84	6,662.00		6,676.00		6/15/2006	
NIOBRARA, ORIGINAL HOLE		B	84	6,732.00		6,746.00		6/15/2006	
CODELL, ORIGINAL HOLE			48	6,934.00		6,946.00		6/1/2006	
Stimulation Intervals									
Zone			Start Date			Top (ftKB)		Btm (ftKB)	
NIOBRARA, ORIGINAL HOLE			6/15/2006			6,662.0		6,746.0	
CODELL, ORIGINAL HOLE			6/15/2006			6,934.0		6,946.0	
CODELL, ORIGINAL HOLE			7/1/2010			6,934.0		6,946.0	
Other In Hole									
Run Date		Des				OD (in)	Top (ftKB)	Btm (ftKB)	
Logs									
Date		Type				Top, MD (ftKB)		Btm, MD (ftKB)	
5/20/2006		COMPENSATED DENSITY				2,700.0		7,078.0	
5/20/2006		INDUCTION				538.0		7,098.0	
6/1/2006		CBL/CCL/GR				3,007.0		5,020.0	
6/1/2006		CBL/CCL/GR				4,983.0		7,036.0	
Plug Back Total Depths									
Date		Type		Com				Depth (ftKB)	
6/16/2010		PLUG REMNANTS		RUN BIT, SCRAPER AND 226 JTS				7,034.0	
7/9/2010		PLUG REMNANTS		PLUG REMNANTS				7,034.0	