

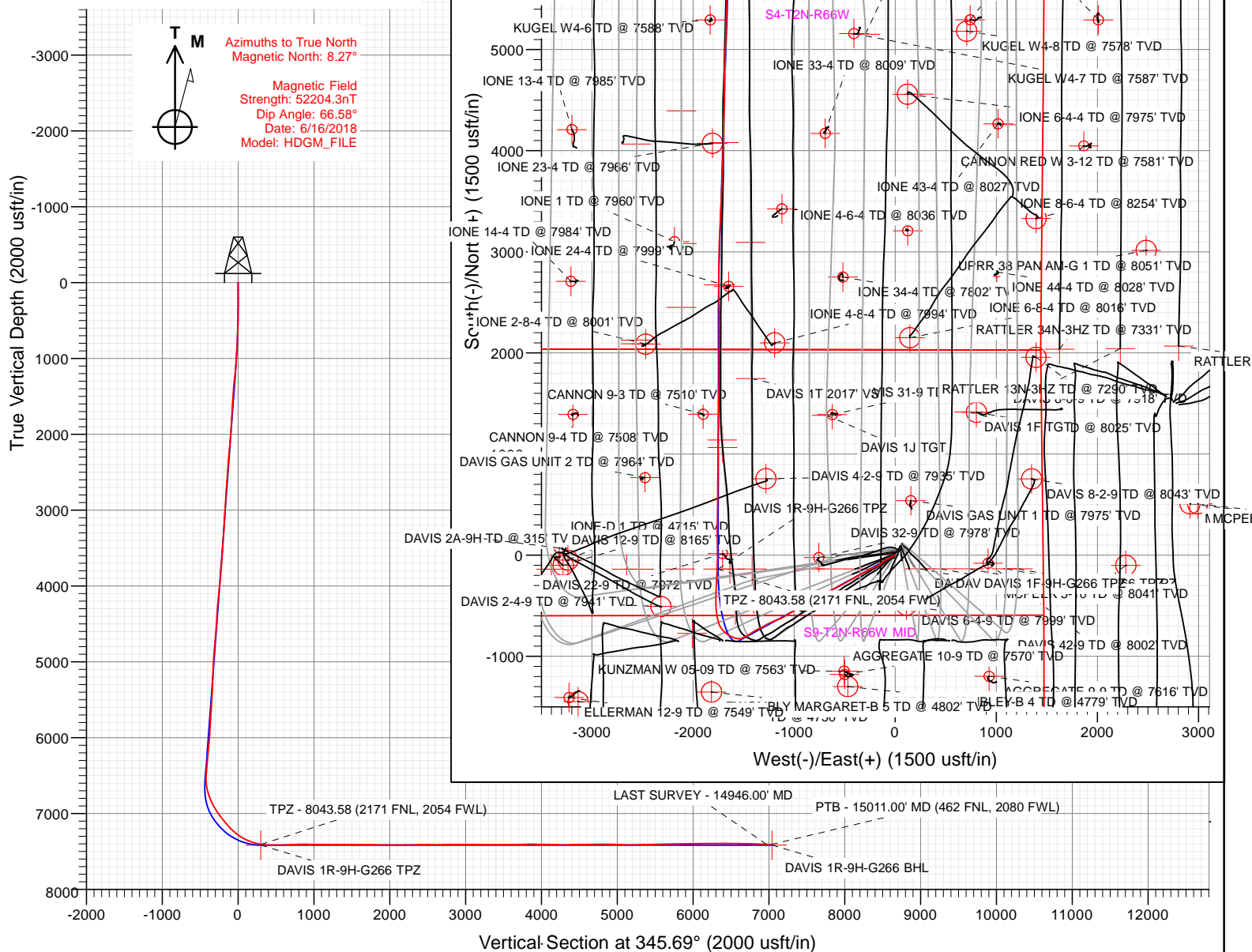


FINAL  
DAVIS 1R-9H-G266  
370537 185113 384937 185178  
23' KB @ 4940.00usft  
Ground Level @ 4917.00  
North American Datum 1983  
Well DAVIS 1R-9H-G266 - Slot DAVIS 1R-9H, True North

Type User	Target No Target (Freehand)	Azimuth 345.69	Origin Type Slot	N/S 0.00	E/W 0.00	From TVD 0.00
Name	TVD	+N-S	+E-W	Latitude	Longitude	
DAVIS 1R-9H-G266 BHL	7417.00	6821.78	-1739.94	40.173976	-104.784261	
DAVIS 1R-9H-G266 TPZ	7417.00	-137.39	-1751.85	40.153872	-104.784302	
Interp @ 7398.00 (DAVIS 1R-9H-G266 BHL)	7417.00	6821.78	-1747.04	40.161587	-104.784286	

Azimuths to True North  
Magnetic North: 8.27°

Magnetic Field  
Strength: 52204.3nT  
Dip Angle: 66.58°  
Date: 6/16/2018  
Model: HDGM\_FILE



WELL DETAILS: DAVIS 1R-9H-G266

4917.00						
+N/-S	+E/-W	Northing	Easting	Latitude	Longitude	
0.00	0.00	1299857.82	3201801.39	40.154249	-104.778035	DAVIS 1R-9H





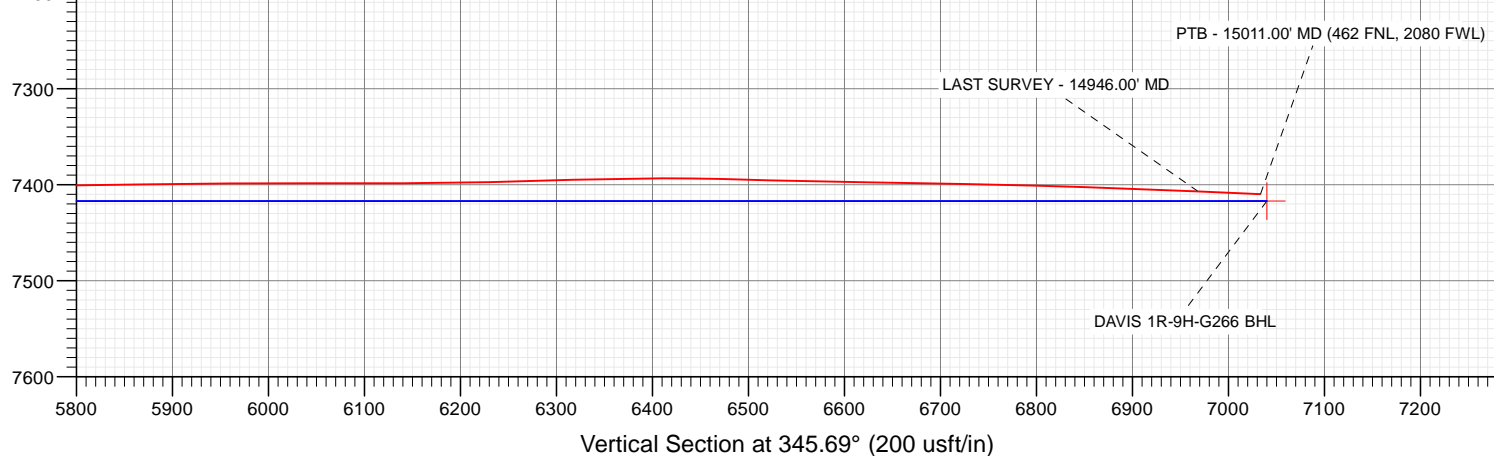
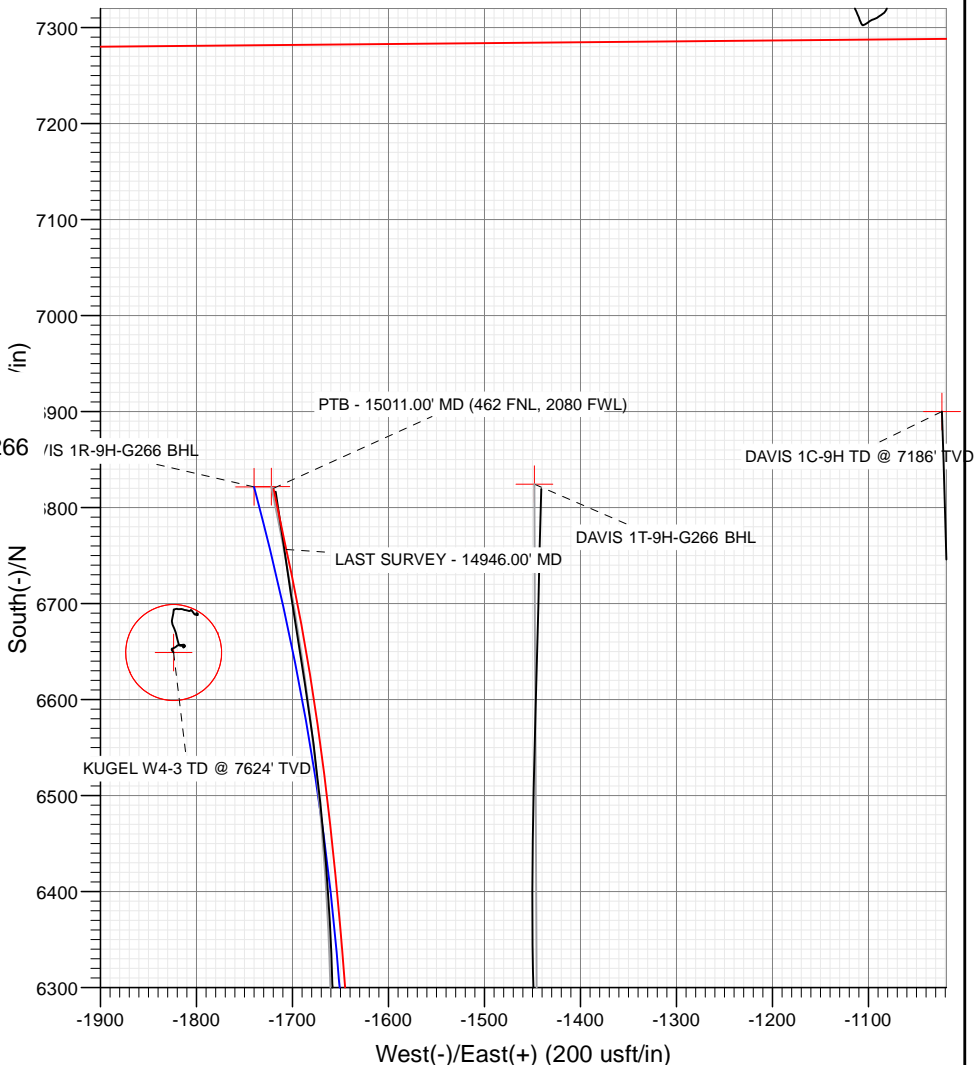
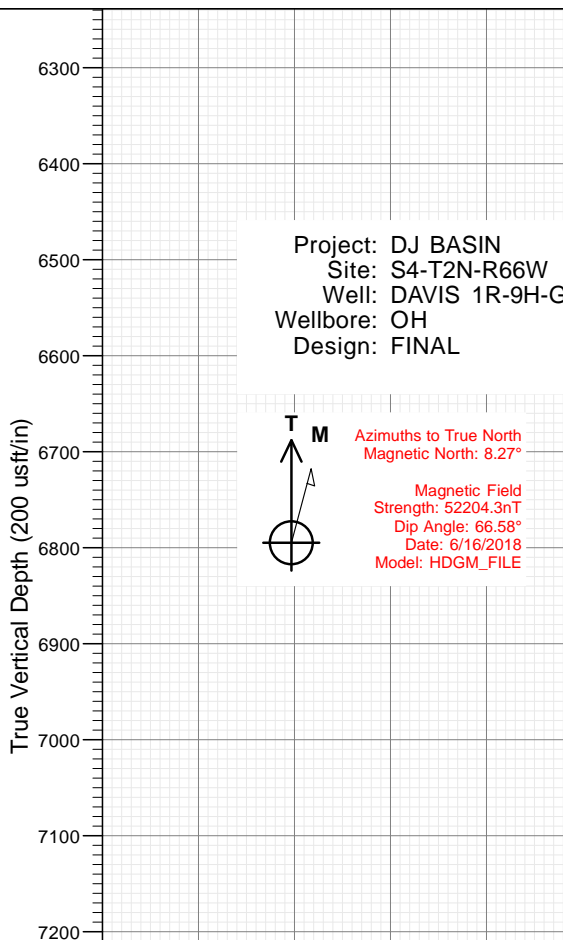
**CRESTONE PEAK**  
RESOURCES

# SECTION DETAILS

Sec	MD	Inc	Azi	TVD	+N/-S	+E/-W	Dleg	TFace	VSect	Target
1	0.00	0.00	0.00	0.00	0.00	0.00	0.00	0.00	0.00	
2	300.00	0.00	0.00	300.00	0.00	0.00	0.00	0.00	0.00	
3	1130.77	16.62	241.29	1119.18	-57.45	-104.92	2.00	241.29	-29.74	
4	6880.30	16.62	241.29	6628.64	-847.11	-1546.92	0.00	0.00	-438.52	
5	8104.29	90.00	0.10	7417.00	-137.39	-1751.85	8.00	117.78	299.83	DAVIS 1R-9H-G266 TPZ
6	10914.62	90.00	0.10	7417.00	2672.94	-1747.04	0.00	0.00	3021.80	Interp @ 7398.00 (DAVIS 1R-9H-G266 (N) OH PLAN #1)
7	11000.00	90.00	1.81	7417.00	2758.30	-1745.62	2.00	90.00	3104.15	
8	14233.36	90.00	1.81	7417.00	5990.06	-1643.75	0.00	0.00	6210.48	
9	15073.64	90.00	345.00	7417.00	6821.78	-1739.94	2.00	-90.00	7040.18	DAVIS 1R-9H-G266 BHL

FINAL  
DAVIS 1R-9H-G266  
370537 185113 384957 185178  
23 KIS @ 4940.00ust  
Ground Level @ 4917.00  
North American Datum 1983  
Well DAVIS 1R-9H-G266 - Slot DAVIS 1R-9H, True North

Type	Target	No Target (Freehand)	Asimuth	Origin Type	N/S	E/W	From TVD
Name	TVD	+N/-S	+E/-W	Latitude	Longitude		
DAVIS 1R-9H-G266 BHL	7417.00	6821.78	-1739.94	40.172976	-104.784261		
DAVIS 1R-9H-G266 TPZ	7417.00	-137.39	-1751.85	40.153872	-104.784302		
Interp @ 7398.00 (DAVIS 1R-9H-G266 (N) OH PLAN #1)		-1747.04	40.161587	-104.784286			



## WELL DETAILS: DAVIS 1R-9H-G266

+N/-S	+E/-W	Northing	Easting	Latitude	Longitude	DAVIS 1R-9H
0.00	0.00	1299857.82	3201801.39	40.154249	-104.778035	

**CATHEDRAL**



# Cathedral Energy Services

## Survey Report

<b>Company:</b>	Crestone Peak Resources	<b>Local Co-ordinate Reference:</b>	Well DAVIS 1R-9H-G266 - Slot DAVIS 1R-9H
<b>Project:</b>	DJ BASIN	<b>TVD Reference:</b>	23' KB @ 4940.00usft
<b>Site:</b>	S4-T2N-R66W	<b>MD Reference:</b>	23' KB @ 4940.00usft
<b>Well:</b>	DAVIS 1R-9H-G266	<b>North Reference:</b>	True
<b>Wellbore:</b>	OH	<b>Survey Calculation Method:</b>	Minimum Curvature
<b>Design:</b>	FINAL	<b>Database:</b>	USA EDM 5000 Multi Users DB

<b>Project</b>	DJ BASIN		
<b>Map System:</b>	US State Plane 1983	<b>System Datum:</b>	Mean Sea Level
<b>Geo Datum:</b>	North American Datum 1983		
<b>Map Zone:</b>	Colorado Northern Zone		

Site		S4-T2N-R66W			
Site Position:		Northing:	1,300,048.95 usft	Latitude:	40.154783
From:	Map	Easting:	3,201,389.75 usft	Longitude:	-104.779502
Position Uncertainty:	0.00 usft	Slot Radius:	13-3/16 "	Grid Convergence:	0.47 °

Well	DAVIS 1R-9H-G266 - Slot DAVIS 1R-9H					
Well Position	+N/-S	0.00 usft	Northing:	1,299,857.82 usft	Latitude:	40.154249
	+E/-W	0.00 usft	Easting:	3,201,801.39 usft	Longitude:	-104.778035
Position Uncertainty		0.00 usft	Wellhead Elevation:	usft	Ground Level:	4,917.00 usft

<b>Wellbore</b>	OH				
<b>Magnetics</b>	<b>Model Name</b>	<b>Sample Date</b>	<b>Declination (°)</b>	<b>Dip Angle (°)</b>	<b>Field Strength (nT)</b>
	HDGM_FILE	6/16/2018	8.27	66.58	52,204.30000000

<b>Design</b>	FINAL				
<b>Audit Notes:</b>					
<b>Version:</b>	1.0	<b>Phase:</b>	ACTUAL	<b>Tie On Depth:</b>	0.00
<b>Vertical Section:</b>	<b>Depth From (TVD) (usft)</b>	<b>+N/-S (usft)</b>	<b>+E/-W (usft)</b>	<b>Direction (°)</b>	
	0.00	0.00	0.00	345.69	

<b>Survey Program</b>	<b>Date</b>	6/23/2018			
<b>From (usft)</b>	<b>To (usft)</b>	<b>Survey (Wellbore)</b>	<b>Tool Name</b>	<b>Description</b>	
90.00	2,131.00	Survey #1 (OH)	VESSI_GYROFLEX	VESSI Gyroflex Gyro	
2,276.00	15,011.00	Survey #2 (OH)	MWD+HDGM	OWSG MWD + HDGM	

<b>Survey</b>									
<b>Measured Depth (usft)</b>	<b>Inclination (°)</b>	<b>Azimuth (°)</b>	<b>Vertical Depth (usft)</b>	<b>+N/-S (usft)</b>	<b>+E/-W (usft)</b>	<b>Vertical Section (usft)</b>	<b>Dogleg Rate (°/100usf)</b>	<b>Build Rate (°/100u)</b>	<b>Formations / Comments</b>
0.00	0.00	0.00	0.00	0.00	0.00	0.00	0.00	0.00	
90.00	0.16	83.71	90.00	0.01	0.12	-0.02	0.18	0.18	
121.00	0.24	7.91	121.00	0.08	0.18	0.04	0.82	0.26	
153.00	0.48	25.32	153.00	0.27	0.24	0.20	0.82	0.75	
184.00	0.27	59.79	184.00	0.42	0.36	0.32	0.97	-0.68	
216.00	0.21	38.78	216.00	0.51	0.46	0.38	0.33	-0.19	
247.00	0.21	31.13	247.00	0.60	0.53	0.45	0.09	0.00	
278.00	0.19	288.51	278.00	0.67	0.51	0.52	1.01	-0.06	
310.00	1.29	268.55	309.99	0.67	0.10	0.63	3.48	3.44	
341.00	1.45	271.28	340.99	0.67	-0.64	0.81	0.56	0.52	
373.00	1.93	257.73	372.97	0.57	-1.57	0.94	1.94	1.50	
404.00	2.96	255.53	403.94	0.26	-2.86	0.96	3.34	3.32	

# Cathedral Energy Services

## Survey Report

<b>Company:</b>	Crestone Peak Resources	<b>Local Co-ordinate Reference:</b>	Well DAVIS 1R-9H-G266 - Slot DAVIS 1R-9H
<b>Project:</b>	DJ BASIN	<b>TVD Reference:</b>	23' KB @ 4940.00usft
<b>Site:</b>	S4-T2N-R66W	<b>MD Reference:</b>	23' KB @ 4940.00usft
<b>Well:</b>	DAVIS 1R-9H-G266	<b>North Reference:</b>	True
<b>Wellbore:</b>	OH	<b>Survey Calculation Method:</b>	Minimum Curvature
<b>Design:</b>	FINAL	<b>Database:</b>	USA EDM 5000 Multi Users DB

Survey									
Measured Depth (usft)	Inclination (°)	Azimuth (°)	Vertical Depth (usft)	+N/-S (usft)	+E/-W (usft)	Vertical Section (usft)	Dogleg Rate (°/100usf)	Build Rate (°/100u)	Formations / Comments
436.00	3.39	252.19	435.89	-0.24	-4.56	0.90	1.46	1.34	
467.00	3.73	250.87	466.83	-0.85	-6.38	0.76	1.13	1.10	
498.00	4.73	245.69	497.75	-1.71	-8.50	0.45	3.45	3.23	
530.00	5.56	245.25	529.62	-2.90	-11.11	-0.06	2.60	2.59	
598.00	7.01	247.83	597.21	-5.84	-17.95	-1.23	2.17	2.13	
692.00	9.30	241.10	690.26	-11.68	-29.91	-3.92	2.64	2.44	
787.00	10.79	236.37	783.80	-20.31	-44.04	-8.80	1.79	1.57	
882.00	11.42	239.71	877.02	-29.98	-59.56	-14.33	0.95	0.66	
976.00	13.13	240.75	968.87	-39.89	-76.91	-19.65	1.83	1.82	
1,070.00	17.19	239.25	1,059.58	-52.22	-98.17	-26.33	4.34	4.32	
1,164.00	17.53	238.29	1,149.30	-66.76	-122.16	-34.50	0.47	0.36	
1,259.00	13.77	228.63	1,240.77	-81.76	-142.82	-43.92	4.80	-3.96	
1,353.00	14.98	231.91	1,331.83	-96.65	-160.78	-53.91	1.55	1.29	
1,448.00	16.77	243.36	1,423.23	-110.38	-182.70	-61.79	3.79	1.88	
1,570.00	17.38	246.83	1,539.85	-125.44	-215.19	-68.36	0.97	0.50	
1,637.00	17.52	245.94	1,603.77	-133.49	-233.59	-71.61	0.45	0.21	
1,732.00	17.31	243.83	1,694.41	-145.55	-259.34	-76.93	0.70	-0.22	
1,826.00	17.13	241.66	1,784.20	-158.29	-284.07	-83.16	0.71	-0.19	
1,948.00	17.14	244.46	1,900.79	-174.57	-316.11	-91.02	0.68	0.01	
2,015.00	16.13	242.26	1,964.98	-183.16	-333.25	-95.10	1.78	-1.51	
2,110.00	16.55	240.95	2,056.15	-195.87	-356.76	-101.61	0.59	0.44	
2,131.00	16.92	240.96	2,076.26	-198.81	-362.05	-103.15	1.76	1.76	
2,276.00	15.07	238.54	2,215.64	-218.89	-396.58	-114.07	1.36	-1.28	
2,370.00	18.37	240.39	2,305.65	-232.59	-419.88	-121.59	3.56	3.51	
2,465.00	17.89	238.02	2,395.94	-247.71	-445.28	-129.97	0.93	-0.51	
2,560.00	16.74	236.35	2,486.63	-263.02	-469.04	-138.93	1.32	-1.21	
2,654.00	16.17	246.37	2,576.80	-275.77	-492.31	-145.53	3.08	-0.61	
2,749.00	13.98	244.61	2,668.52	-286.00	-514.80	-149.88	2.35	-2.31	
2,843.00	14.72	241.71	2,759.59	-296.53	-535.57	-154.95	1.10	0.79	
2,937.00	16.04	241.18	2,850.22	-308.45	-557.47	-161.09	1.41	1.40	
3,032.00	16.96	243.47	2,941.31	-320.96	-581.36	-167.31	1.19	0.97	
3,127.00	15.95	243.73	3,032.42	-332.93	-605.47	-172.95	1.07	-1.06	
3,221.00	17.18	245.93	3,122.52	-344.31	-629.72	-177.98	1.47	1.31	
3,316.00	15.03	246.01	3,213.78	-355.04	-653.79	-182.43	2.26	-2.26	
3,411.00	16.70	244.08	3,305.16	-366.02	-677.32	-187.25	1.84	1.76	
3,505.00	17.36	238.54	3,395.05	-379.24	-701.44	-194.10	1.86	0.70	
3,600.00	14.63	238.46	3,486.36	-392.91	-723.75	-201.83	2.87	-2.87	
3,694.00	17.49	242.67	3,576.69	-405.61	-746.43	-208.53	3.28	3.04	
3,788.00	17.49	240.30	3,666.34	-419.10	-771.24	-215.47	0.76	0.00	
3,883.00	16.83	245.75	3,757.12	-431.82	-796.19	-221.63	1.83	-0.69	
3,978.00	17.27	237.49	3,847.96	-445.05	-820.62	-228.41	2.59	0.46	
4,072.00	14.41	236.61	3,938.38	-458.99	-842.16	-236.59	3.05	-3.04	
4,166.00	16.92	232.66	4,028.88	-473.72	-862.80	-245.77	2.90	2.67	
4,261.00	19.34	238.98	4,119.17	-490.22	-887.28	-255.70	3.28	2.55	
4,378.00	16.61	238.90	4,230.45	-508.84	-918.21	-266.10	2.33	-2.33	
4,473.00	16.52	244.26	4,321.51	-521.72	-942.00	-272.70	1.61	-0.09	
4,567.00	16.70	247.33	4,411.59	-532.73	-966.50	-277.32	0.95	0.19	
4,662.00	20.74	242.94	4,501.55	-545.65	-994.09	-283.01	4.50	4.25	
4,756.00	16.92	239.95	4,590.50	-560.08	-1,020.76	-290.40	4.19	-4.06	
4,851.00	17.84	237.40	4,681.17	-574.84	-1,044.99	-298.72	1.26	0.97	
4,945.00	16.00	237.75	4,771.09	-589.52	-1,068.08	-307.23	1.96	-1.96	
5,040.00	14.02	238.72	4,862.85	-602.48	-1,088.99	-314.62	2.10	-2.08	
5,135.00	13.05	239.33	4,955.21	-613.92	-1,108.05	-321.00	1.03	-1.02	

# Cathedral Energy Services

## Survey Report

<b>Company:</b>	Crestone Peak Resources	<b>Local Co-ordinate Reference:</b>	Well DAVIS 1R-9H-G266 - Slot DAVIS 1R-9H
<b>Project:</b>	DJ BASIN	<b>TVD Reference:</b>	23' KB @ 4940.00usft
<b>Site:</b>	S4-T2N-R66W	<b>MD Reference:</b>	23' KB @ 4940.00usft
<b>Well:</b>	DAVIS 1R-9H-G266	<b>North Reference:</b>	True
<b>Wellbore:</b>	OH	<b>Survey Calculation Method:</b>	Minimum Curvature
<b>Design:</b>	FINAL	<b>Database:</b>	USA EDM 5000 Multi Users DB

Survey									
Measured Depth (usft)	Inclination (°)	Azimuth (°)	Vertical Depth (usft)	+N/-S (usft)	+E/-W (usft)	Vertical Section (usft)	Dogleg Rate (°/100usf)	Build Rate (°/100u)	Formations / Comments
5,229.00	13.80	245.66	5,046.64	-623.96	-1,127.39	-325.94	1.75	0.80	
5,323.00	16.70	250.06	5,137.33	-633.19	-1,150.31	-329.22	3.32	3.09	
5,417.00	17.75	247.25	5,227.11	-643.34	-1,176.22	-332.65	1.42	1.12	
5,512.00	14.41	248.30	5,318.38	-653.31	-1,200.57	-336.30	3.53	-3.52	
5,606.00	16.26	246.37	5,409.03	-662.91	-1,223.49	-339.93	2.04	1.97	
5,700.00	17.14	244.17	5,499.07	-674.22	-1,248.02	-344.83	1.15	0.94	
5,795.00	16.30	238.63	5,590.05	-687.26	-1,272.00	-351.54	1.90	-0.88	
5,889.00	15.34	241.71	5,680.50	-700.02	-1,294.21	-358.41	1.36	-1.02	
5,984.00	14.85	240.74	5,772.22	-711.93	-1,315.90	-364.59	0.58	-0.52	
6,079.00	14.59	250.41	5,864.11	-721.89	-1,337.80	-368.83	2.60	-0.27	
6,173.00	16.00	240.57	5,954.80	-732.23	-1,360.24	-373.30	3.14	1.50	
6,267.00	16.04	238.54	6,045.15	-745.37	-1,382.60	-380.51	0.60	0.04	
6,361.00	17.58	239.07	6,135.13	-759.44	-1,405.86	-388.40	1.65	1.64	
6,456.00	18.63	238.72	6,225.42	-774.70	-1,431.13	-396.93	1.11	1.11	
6,551.00	18.19	238.72	6,315.56	-790.28	-1,456.77	-405.69	0.46	-0.46	
6,645.00	17.62	240.74	6,405.01	-804.85	-1,481.72	-413.64	0.90	-0.61	
6,740.00	16.96	244.52	6,495.72	-817.84	-1,506.78	-420.03	1.37	-0.69	
6,787.00	16.96	250.41	6,540.68	-823.08	-1,519.42	-421.99	3.65	0.00	
6,834.00	19.60	260.87	6,585.31	-826.64	-1,533.67	-421.91	8.94	5.62	
6,881.00	22.41	273.96	6,629.21	-827.27	-1,550.41	-418.39	11.60	5.98	
6,928.00	25.71	286.62	6,672.15	-823.73	-1,569.13	-410.33	13.00	7.02	
6,975.00	27.69	291.54	6,714.14	-816.80	-1,589.06	-398.70	6.31	4.21	
7,022.00	30.32	291.19	6,755.24	-808.50	-1,610.28	-385.41	5.61	5.60	
7,069.00	31.69	296.38	6,795.53	-798.73	-1,632.41	-370.47	6.39	2.91	
7,116.00	31.11	300.07	6,835.65	-787.16	-1,653.98	-353.92	4.27	-1.23	
7,163.00	31.47	306.13	6,875.83	-773.84	-1,674.40	-335.97	6.74	0.77	
7,211.00	33.53	316.59	6,916.34	-756.80	-1,693.65	-314.71	12.45	4.29	
7,258.00	34.45	323.53	6,955.33	-736.68	-1,710.48	-291.04	8.48	1.96	
7,305.00	35.90	328.46	6,993.75	-714.24	-1,725.59	-265.56	6.78	3.09	
7,352.00	37.49	336.01	7,031.45	-689.41	-1,738.62	-238.29	10.17	3.38	
7,399.00	39.07	343.40	7,068.37	-662.13	-1,748.67	-209.37	10.30	3.36	
7,446.00	38.94	347.97	7,104.90	-633.49	-1,755.99	-179.81	6.13	-0.28	
7,494.00	40.21	349.90	7,141.90	-603.48	-1,761.85	-149.28	3.68	2.65	
7,541.00	43.11	351.48	7,177.01	-572.65	-1,766.89	-118.17	6.56	6.17	
7,588.00	46.45	354.38	7,210.37	-539.81	-1,770.94	-85.34	8.33	7.11	
7,635.00	49.75	356.49	7,241.75	-504.94	-1,773.70	-50.87	7.78	7.02	
7,682.00	52.73	359.04	7,271.18	-468.33	-1,775.12	-15.05	7.62	6.34	
7,729.00	56.78	1.68	7,298.30	-429.96	-1,774.85	22.07	9.76	8.62	
7,776.00	61.35	2.47	7,322.45	-389.68	-1,773.39	60.73	9.83	9.72	
7,823.00	65.96	2.47	7,343.30	-347.61	-1,771.57	101.05	9.81	9.81	
7,871.00	69.21	3.17	7,361.61	-303.30	-1,769.39	143.45	6.90	6.77	
7,918.00	71.10	3.26	7,377.56	-259.16	-1,766.91	185.60	4.03	4.02	
7,965.00	75.06	2.47	7,391.24	-214.26	-1,764.66	228.55	8.58	8.43	
8,012.00	79.23	2.56	7,401.69	-168.50	-1,762.65	272.40	8.87	8.87	
8,043.58	81.57	2.21	7,406.96	-137.39	-1,761.36	302.23	7.50	7.42	TPZ - 8043.58 (2171 FNL, 2054 FWL)
8,060.00	82.79	2.03	7,409.19	-121.13	-1,760.76	317.83	7.50	7.42	
8,107.00	86.62	1.33	7,413.53	-74.36	-1,759.38	362.81	8.28	8.15	
8,155.00	89.87	359.39	7,415.00	-26.39	-1,759.08	409.22	7.88	6.77	
8,250.00	90.79	359.83	7,414.45	68.60	-1,759.73	501.42	1.07	0.97	
8,344.00	91.41	359.13	7,412.65	162.58	-1,760.58	592.70	0.99	0.66	
8,438.00	91.14	0.36	7,410.55	256.55	-1,761.00	683.86	1.34	-0.29	
8,532.00	90.18	1.33	7,409.47	350.53	-1,759.62	774.58	1.45	-1.02	
8,627.00	90.44	0.27	7,408.96	445.52	-1,758.29	866.29	1.15	0.27	

# Cathedral Energy Services

## Survey Report

<b>Company:</b>	Crestone Peak Resources	<b>Local Co-ordinate Reference:</b>	Well DAVIS 1R-9H-G266 - Slot DAVIS 1R-9H
<b>Project:</b>	DJ BASIN	<b>TVD Reference:</b>	23' KB @ 4940.00usft
<b>Site:</b>	S4-T2N-R66W	<b>MD Reference:</b>	23' KB @ 4940.00usft
<b>Well:</b>	DAVIS 1R-9H-G266	<b>North Reference:</b>	True
<b>Wellbore:</b>	OH	<b>Survey Calculation Method:</b>	Minimum Curvature
<b>Design:</b>	FINAL	<b>Database:</b>	USA EDM 5000 Multi Users DB

Survey									
Measured Depth (usft)	Inclination (°)	Azimuth (°)	Vertical Depth (usft)	+N/-S (usft)	+E/-W (usft)	Vertical Section (usft)	Dogleg Rate (°/100usf)	Build Rate (°/100u)	Formations / Comments
8,721.00	89.56	0.54	7,408.96	539.52	-1,757.62	957.21	0.98	-0.94	
8,816.00	89.91	0.27	7,409.40	634.52	-1,756.95	1,049.09	0.47	0.37	
8,911.00	89.43	1.50	7,409.94	729.50	-1,755.49	1,140.77	1.39	-0.51	
9,005.00	89.78	0.89	7,410.59	823.48	-1,753.53	1,231.34	0.75	0.37	
9,100.00	90.26	1.24	7,410.56	918.46	-1,751.76	1,322.94	0.63	0.51	
9,194.00	89.82	359.04	7,410.49	1,012.45	-1,751.53	1,413.96	2.39	-0.47	
9,289.00	90.44	359.31	7,410.28	1,107.44	-1,752.90	1,506.34	0.71	0.65	
9,383.00	88.99	0.80	7,410.74	1,201.44	-1,752.81	1,597.40	2.21	-1.54	
9,478.00	90.00	2.03	7,411.58	1,296.40	-1,750.46	1,688.84	1.68	1.06	
9,571.00	88.73	1.59	7,412.61	1,389.35	-1,747.52	1,778.17	1.45	-1.37	
9,666.00	89.21	1.06	7,414.32	1,484.31	-1,745.33	1,869.64	0.75	0.51	
9,760.00	89.74	0.54	7,415.18	1,578.29	-1,744.02	1,960.39	0.79	0.56	
9,855.00	90.26	0.10	7,415.18	1,673.29	-1,743.49	2,052.31	0.72	0.55	
9,950.00	90.84	0.10	7,414.27	1,768.29	-1,743.32	2,144.31	0.61	0.61	
10,044.00	91.32	359.75	7,412.50	1,862.27	-1,743.44	2,235.41	0.63	0.51	
10,139.00	90.62	1.33	7,410.89	1,957.25	-1,742.55	2,327.22	1.82	-0.74	
10,233.00	89.21	0.80	7,411.03	2,051.23	-1,740.80	2,417.85	1.60	-1.50	
10,327.00	89.74	0.10	7,411.89	2,145.22	-1,740.06	2,508.75	0.93	0.56	
10,422.00	90.04	359.92	7,412.07	2,240.22	-1,740.05	2,600.80	0.37	0.32	
10,516.00	90.53	0.10	7,411.60	2,334.22	-1,740.03	2,691.87	0.56	0.52	
10,610.00	91.06	359.66	7,410.30	2,428.21	-1,740.23	2,783.00	0.73	0.56	
10,705.00	90.04	357.37	7,409.39	2,523.16	-1,742.69	2,875.61	2.64	-1.07	
10,800.00	89.65	359.48	7,409.65	2,618.12	-1,745.30	2,968.27	2.26	-0.41	
10,894.00	89.91	359.39	7,410.01	2,712.12	-1,746.23	3,059.58	0.29	0.28	
10,988.00	89.52	1.06	7,410.47	2,806.11	-1,745.86	3,150.57	1.82	-0.41	
11,083.00	89.08	1.77	7,411.63	2,901.08	-1,743.51	3,242.00	0.88	-0.46	
11,177.00	89.43	1.15	7,412.86	2,995.04	-1,741.12	3,332.46	0.76	0.37	
11,272.00	90.13	0.80	7,413.22	3,090.02	-1,739.50	3,424.09	0.82	0.74	
11,366.00	91.23	2.73	7,412.11	3,183.96	-1,736.60	3,514.41	2.36	1.17	
11,460.00	91.45	2.91	7,409.91	3,277.82	-1,731.98	3,604.21	0.30	0.23	
11,554.00	91.85	3.08	7,407.20	3,371.66	-1,727.07	3,693.92	0.46	0.43	
11,648.00	90.57	3.00	7,405.22	3,465.50	-1,722.09	3,783.62	1.36	-1.36	
11,742.00	89.17	2.47	7,405.43	3,559.39	-1,717.60	3,873.49	1.59	-1.49	
11,837.00	89.12	2.12	7,406.85	3,654.30	-1,713.80	3,964.52	0.37	-0.05	
11,931.00	88.77	2.65	7,408.58	3,748.21	-1,709.89	4,054.54	0.68	-0.37	
12,025.00	88.37	1.77	7,410.92	3,842.11	-1,706.26	4,144.63	1.03	-0.43	
12,119.00	89.82	1.50	7,412.41	3,936.05	-1,703.58	4,235.00	1.57	1.54	
12,213.00	90.26	1.06	7,412.34	4,030.03	-1,701.48	4,325.54	0.66	0.47	
12,308.00	90.48	1.15	7,411.73	4,125.01	-1,699.65	4,417.12	0.25	0.23	
12,403.00	91.14	0.62	7,410.39	4,219.99	-1,698.18	4,508.79	0.89	0.69	
12,497.00	91.54	2.12	7,408.19	4,313.93	-1,695.94	4,599.26	1.65	0.43	
12,592.00	90.88	2.03	7,406.18	4,408.85	-1,692.50	4,690.39	0.70	-0.69	
12,686.00	90.00	0.01	7,405.46	4,502.83	-1,690.83	4,781.03	2.34	-0.94	
12,781.00	88.51	0.18	7,406.70	4,597.81	-1,690.67	4,873.04	1.58	-1.57	
12,875.00	88.37	0.45	7,409.25	4,691.78	-1,690.15	4,963.96	0.32	-0.15	
12,969.00	89.21	2.47	7,411.24	4,785.72	-1,687.76	5,054.39	2.33	0.89	
13,064.00	89.52	2.12	7,412.29	4,880.64	-1,683.95	5,145.42	0.49	0.33	
13,158.00	90.26	2.03	7,412.47	4,974.58	-1,680.55	5,235.61	0.79	0.79	
13,253.00	90.88	1.68	7,411.53	5,069.52	-1,677.47	5,326.85	0.75	0.65	
13,347.00	91.49	1.06	7,409.58	5,163.47	-1,675.23	5,417.33	0.93	0.65	
13,442.00	91.01	1.33	7,407.51	5,258.43	-1,673.25	5,508.85	0.58	-0.51	
13,536.00	91.23	3.52	7,405.67	5,352.32	-1,669.27	5,598.84	2.34	0.23	
13,630.00	91.89	2.82	7,403.11	5,446.14	-1,664.07	5,688.47	1.02	0.70	

# Cathedral Energy Services

## Survey Report

<b>Company:</b>	Crestone Peak Resources	<b>Local Co-ordinate Reference:</b>	Well DAVIS 1R-9H-G266 - Slot DAVIS 1R-9H
<b>Project:</b>	DJ BASIN	<b>TVD Reference:</b>	23' KB @ 4940.00usft
<b>Site:</b>	S4-T2N-R66W	<b>MD Reference:</b>	23' KB @ 4940.00usft
<b>Well:</b>	DAVIS 1R-9H-G266	<b>North Reference:</b>	True
<b>Wellbore:</b>	OH	<b>Survey Calculation Method:</b>	Minimum Curvature
<b>Design:</b>	FINAL	<b>Database:</b>	USA EDM 5000 Multi Users DB

Survey									
Measured Depth (usft)	Inclination (°)	Azimuth (°)	Vertical Depth (usft)	+N/-S (usft)	+E/-W (usft)	Vertical Section (usft)	Dogleg Rate (°/100usf)	Build Rate (°/100u)	Formations / Comments
13,725.00	90.79	3.44	7,400.89	5,540.97	-1,658.89	5,779.07	1.33	-1.16	
13,820.00	90.53	3.96	7,399.80	5,635.77	-1,652.76	5,869.41	0.61	-0.27	
13,915.00	90.75	2.82	7,398.74	5,730.59	-1,647.14	5,959.91	1.22	0.23	
14,009.00	89.65	2.65	7,398.41	5,824.48	-1,642.66	6,049.78	1.18	-1.17	
14,103.00	90.18	1.42	7,398.55	5,918.42	-1,639.32	6,139.98	1.42	0.56	
14,197.00	91.23	0.98	7,397.39	6,012.39	-1,637.35	6,230.55	1.21	1.12	
14,287.00	91.93	359.57	7,394.91	6,102.36	-1,636.92	6,317.61	1.75	0.78	
14,382.00	89.96	357.64	7,393.34	6,197.31	-1,639.23	6,410.18	2.90	-2.07	
14,476.00	88.24	355.97	7,394.82	6,291.14	-1,644.47	6,502.40	2.55	-1.83	
14,571.00	88.95	354.82	7,397.15	6,385.80	-1,652.09	6,596.01	1.42	0.75	
14,665.00	89.25	353.42	7,398.63	6,479.30	-1,661.72	6,688.98	1.52	0.32	
14,759.00	88.46	352.19	7,400.50	6,572.53	-1,673.49	6,782.24	1.55	-0.84	
14,854.00	87.85	349.64	7,403.56	6,666.29	-1,688.48	6,876.79	2.76	-0.64	
14,946.00	87.67	348.06	7,407.16	6,756.48	-1,706.26	6,968.57	1.73	-0.20	LAST SURVEY - 14946.00' MD
15,011.00	87.67	348.06	7,409.80	6,820.02	-1,719.70	7,033.46	0.00	0.00	PTB - 15011.00' MD (462 FNL, 2080 FWL)

Targets									
Target Name	Dip Angle (°)	Dip Dir. (°)	TVD (usft)	+N/-S (usft)	+E/-W (usft)	Northing (usft)	Easting (usft)	Latitude	Longitude
DAVIS 1R-9H-G266 BHI - hit/miss target - Shape	0.00	0.00	7,417.00	6,821.78	-1,739.94	1,306,665.21	3,200,005.96	40.172976	-104.784261
- actual wellpath misses target center by 21.56usft at 15011.00usft MD (7409.80 TVD, 6820.02 N, -1719.70 E)									
- Point									
Interp @ 7398.00 (DAVI: - actual wellpath misses target center by 7.20usft at 10854.86usft MD (7409.91 TVD, 2672.98 N, -1745.82 E)	0.00	0.00	7,417.00	2,672.94	-1,747.04	1,302,516.45	3,200,032.64	40.161587	-104.784286
- Point									
DAVIS 1R-9H-G266 TP2 - actual wellpath misses target center by 13.71usft at 8045.29usft MD (7407.21 TVD, -135.70 N, -1761.29 E)	0.00	0.00	7,417.00	-137.39	-1,751.85	1,299,706.17	3,200,050.71	40.153872	-104.784302
- Point									

Design Annotations					
Measured Depth (usft)	Vertical Depth (usft)	Local Coordinates			
		+N/-S (usft)	+E/-W (usft)	Comment	
8,043.58	7,406.96	-137.39	-1,761.36	TPZ - 8043.58 (2171 FNL, 2054 FWL)	
14,946.00	7,407.16	6,756.48	-1,706.26	LAST SURVEY - 14946.00' MD	
15,011.00	7,409.80	6,820.02	-1,719.70	PTB - 15011.00' MD (462 FNL, 2080 FWL)	

Checked By: \_\_\_\_\_ Approved By: \_\_\_\_\_ Date: \_\_\_\_\_