



CRESTONE PEAK
RESOURCES

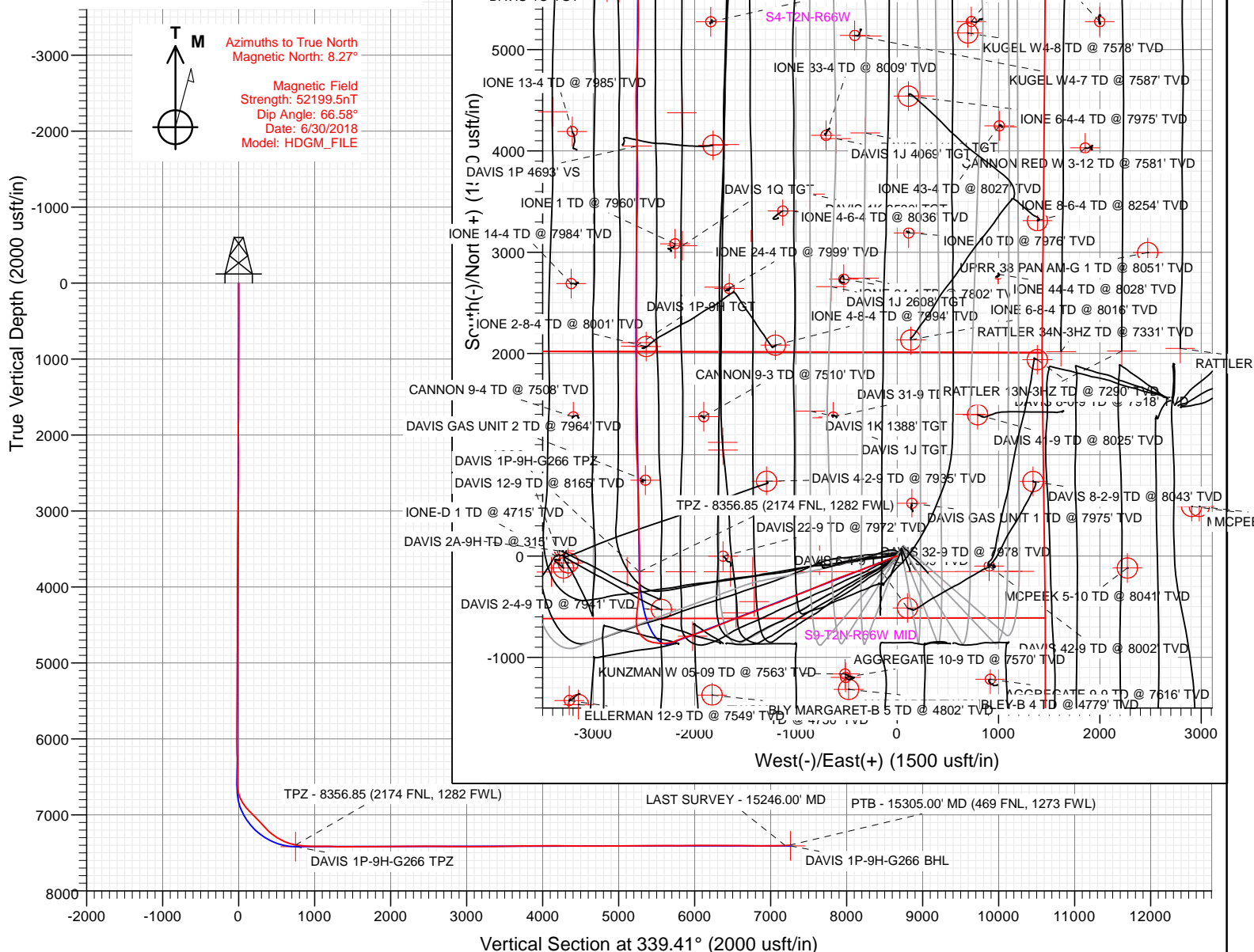
SECTION DETAILS

Sec	MD	Inc	Azi	TVD	+N/-S	+E/-W	Dleg	TFace	Vsect	Target
1	0.00	0.00	0.00	0.00	0.00	0.00	0.00	0.00	0.00	
2	400.00	0.00	0.00	400.00	0.00	0.00	0.00	0.00	0.00	
3	1542.83	22.86	248.92	1512.76	-80.92	-209.88	2.00	248.92	-1.93	
4	7131.52	22.86	248.92	6662.62	-861.86	-2235.34	0.00	0.00	-20.56	
5	8353.96	90.08	359.16	7418.00	-155.74	-2544.88	8.00	108.74	749.32	DAVIS 1P-9H-G266 TPZ
6	10618.94	90.08	359.16	7415.00	2108.99	-2578.02	0.00	0.00	2881.00	DAVIS 1P 2881' VS
7	10676.63	90.18	0.31	7414.87	2166.68	-2578.28	2.00	84.86	2935.09	
8	12549.41	90.18	0.31	7409.01	4039.43	-2568.13	0.00	0.00	4684.60	
9	12558.40	90.00	0.30	7409.00	4048.42	-2568.08	2.00	-175.28	4693.00	DAVIS 1P 4693' VS
10	15306.97	90.00	0.30	7409.00	6796.95	-2553.88	0.00	0.00	7260.91	DAVIS 1P-9H-G266 BHL

FINAL
DAVIS 1P-9H-G266
370937 185115 385537 185196
23 KB @ 4940.00usft
Ground Level @ 4917.00
North American Datum 1983
Well DAVIS 1P-9H-G266 - Slot DAVIS 1P-9H, True North

Type	Target	No Target (Freehand)	Azimuth	Origin Type	Slot	N/S	E/W	From TVD
Name								
DAVIS 1P-9H TGT			339.41					
DAVIS 1P 4693' VS			339.41					
DAVIS 1P-9H-G266 BHL			339.41					
DAVIS 1P 2881' VS			339.41					
DAVIS 1P-9H-G266 TPZ			339.41					

Project: DJ BASIN
Site: S4-T2N-R66W
Well: DAVIS 1P-9H-G266
Wellbore: OH
Design: FINAL



WELL DETAILS: DAVIS 1P-9H-G266

+N/-S	+E/-W	Northing	Easting	Latitude	Longitude	DAVIS 1P-9H
0.00	0.00	1299875.27	3201811.17	40.154297	-104.777999	

CATHEDRAL





CRESTONE PEAK
RESOURCES

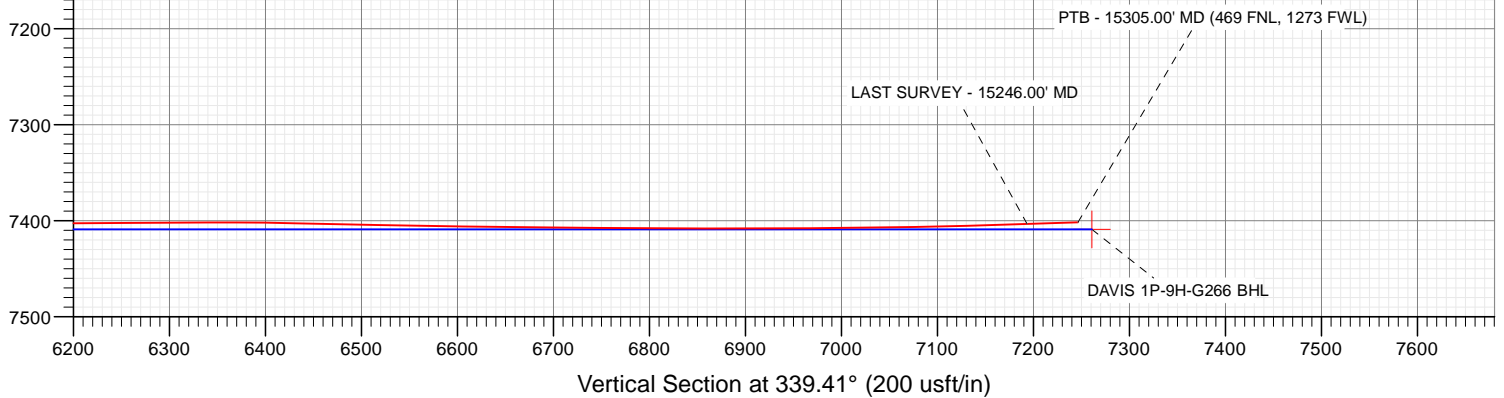
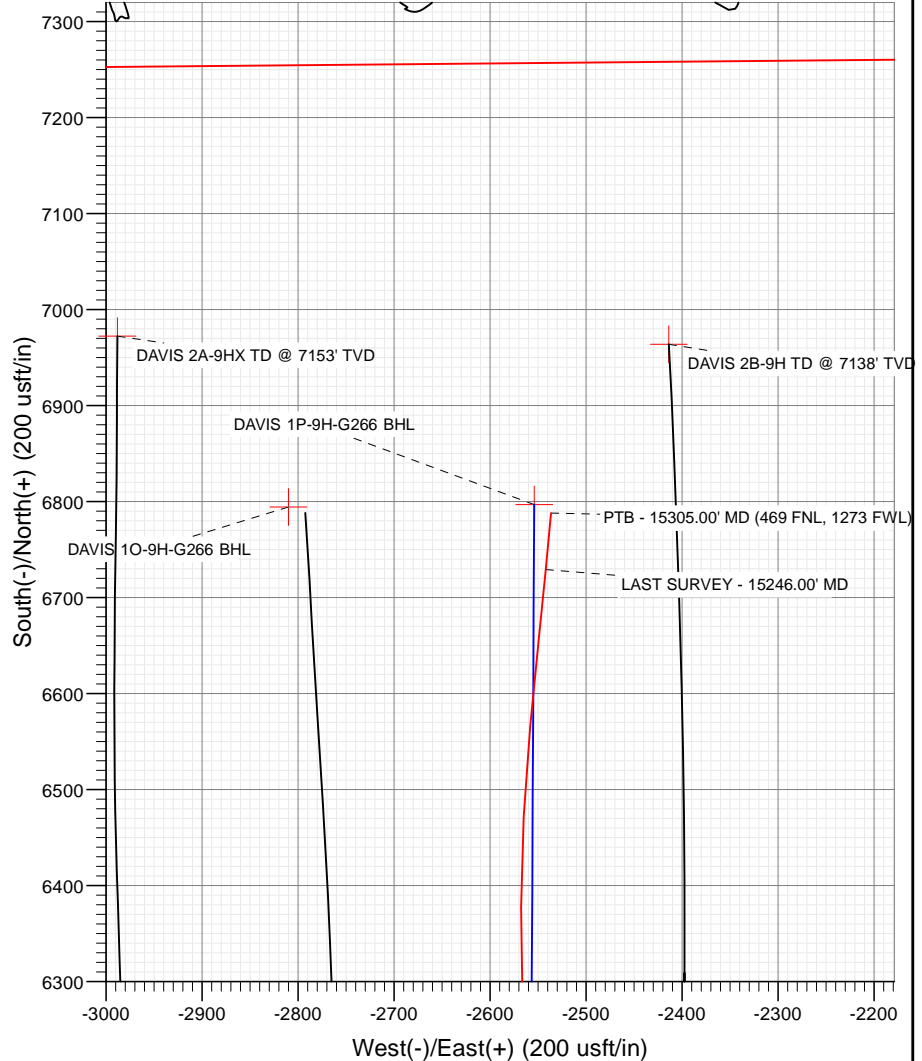
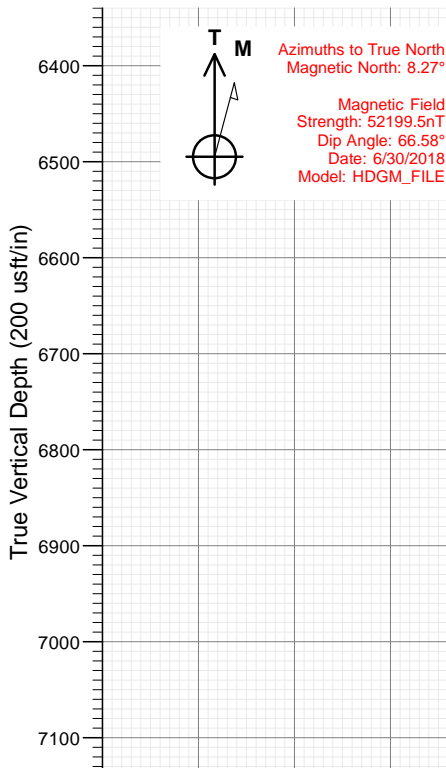
SECTION DETAILS

Sec	MD	Inc	Azi	TVD	+N/-S	+E/-W	Dleg	TFace	Vsect	Target
1	0.00	0.00	0.00	0.00	0.00	0.00	0.00	0.00	0.00	
2	400.00	0.00	0.00	400.00	0.00	0.00	0.00	0.00	0.00	
3	1542.83	22.86	248.92	1512.76	-80.92	-209.88	2.00	248.92	-1.93	
4	7131.52	22.86	248.92	6662.62	-861.86	-2235.34	0.00	0.00	-20.56	
5	8353.96	90.08	359.16	7418.00	-155.74	-2544.88	8.00	108.74	749.32	DAVIS 1P-9H-G266 TPZ
6	10618.94	90.08	359.16	7415.00	2108.99	-2578.02	0.00	0.00	2881.00	DAVIS 1P 2881' VS
7	10676.63	90.18	0.31	7414.87	2166.68	-2578.28	2.00	84.86	2935.09	
8	12549.41	90.18	0.31	7409.01	4039.43	-2568.13	0.00	0.00	4684.60	
9	12558.40	90.00	0.30	7409.00	4048.42	-2568.08	2.00	-175.28	4693.00	DAVIS 1P 4693' VS
10	15306.97	90.00	0.30	7409.00	6796.95	-2553.88	0.00	0.00	7260.91	DAVIS 1P-9H-G266 BHL

FINAL
DAVIS 1P-9H-G266
370937 185115 385537 185196
23 KB @ 4940.00usft
Ground Level @ 4917.00
North American Datum 1983
Well DAVIS 1P-9H-G266 - Slot DAVIS 1P-9H, True North

Type	Target	No Target (Freehand)	Azimuth	Origin Type	N/S	E/W	From TVD
Name							
DAVIS 1P-9H TGT			339.41	0.00	0.00	0.00	0.00
DAVIS 1P 4693' VS			339.41	0.00	0.00	0.00	0.00
DAVIS 1P-9H-G266 BHL			339.41	0.00	0.00	0.00	0.00
DAVIS 1P 2881' VS			339.41	0.00	0.00	0.00	0.00
DAVIS 1P-9H-G266 TPZ			339.41	0.00	0.00	0.00	0.00

Project: DJ BASIN
Site: S4-T2N-R66W
Well: DAVIS 1P-9H-G266
Wellbore: OH
Design: FINAL



WELL DETAILS: DAVIS 1P-9H-G266

4917.00
+N/-S 0.00 +E/-W 0.00 Northing 1299875.27 Easting 3201811.17 Latitude 40.154297 Longitude -104.777999 DAVIS 1P-9H

CATHEDRAL



Cathedral Energy Services

Survey Report

Company:	Crestone Peak Resources	Local Co-ordinate Reference:	Well DAVIS 1P-9H-G266 - Slot DAVIS 1P-9H
Project:	DJ BASIN	TVD Reference:	23' KB @ 4940.00usft
Site:	S4-T2N-R66W	MD Reference:	23' KB @ 4940.00usft
Well:	DAVIS 1P-9H-G266	North Reference:	True
Wellbore:	OH	Survey Calculation Method:	Minimum Curvature
Design:	FINAL	Database:	USA EDM 5000 Multi Users DB

Project	DJ BASIN		
Map System:	US State Plane 1983	System Datum:	Mean Sea Level
Geo Datum:	North American Datum 1983		
Map Zone:	Colorado Northern Zone		

Site		S4-T2N-R66W			
Site Position:		Northing:	1,300,048.95 usft	Latitude:	40.154783
From:	Map	Easting:	3,201,389.75 usft	Longitude:	-104.779502
Position Uncertainty:	0.00 usft	Slot Radius:	13-3/16 "	Grid Convergence:	0.47 °

Well	DAVIS 1P-9H-G266 - Slot DAVIS 1P-9H					
Well Position	+N/-S	0.00 usft	Northing:	1,299,875.27 usft	Latitude:	40.154297
	+E/-W	0.00 usft	Easting:	3,201,811.17 usft	Longitude:	-104.777999
Position Uncertainty		0.00 usft	Wellhead Elevation:	usft	Ground Level:	4,917.00 usft

Wellbore	OH				
Magnetics	Model Name	Sample Date	Declination (°)	Dip Angle (°)	Field Strength (nT)
	HDGM_FILE	6/30/2018	8.27	66.58	52,199.50000000

Design	FINAL				
Audit Notes:					
Version:	1.0	Phase:	ACTUAL	Tie On Depth:	0.00
Vertical Section:	Depth From (TVD) (usft)	+N/-S (usft)	+E/-W (usft)	Direction (°)	
	0.00	0.00	0.00	339.41	

Survey Program	Date	7/23/2018			
From (usft)	To (usft)	Survey (Wellbore)	Tool Name	Description	
103.00	2,125.00	Survey #1 (OH)	VESSI_GYROFLEX	VESSI Gyroflex Gyro	
2,278.00	15,305.00	Survey #2 (OH)	MWD+HDGM	OWSG MWD + HDGM	

Survey										
Measured Depth (usft)	Inclination (°)	Azimuth (°)	Vertical Depth (usft)	+N/-S (usft)	+E/-W (usft)	Vertical Section (usft)	Dogleg Rate (°/100usf)	Build Rate (°/100u)	Formations / Comments	
0.00	0.00	0.00	0.00	0.00	0.00	0.00	0.00	0.00		
103.00	0.30	341.01	103.00	0.25	-0.09	0.27	0.29	0.29		
134.00	0.21	16.88	134.00	0.39	-0.10	0.40	0.58	-0.29		
166.00	0.11	21.02	166.00	0.47	-0.07	0.47	0.31	-0.31		
197.00	0.13	33.33	197.00	0.53	-0.04	0.51	0.10	0.06		
229.00	0.13	327.82	229.00	0.59	-0.04	0.57	0.44	0.00		
260.00	0.27	266.44	260.00	0.61	-0.13	0.62	0.76	0.45		
292.00	0.30	209.90	292.00	0.54	-0.25	0.59	0.85	0.09		
323.00	0.40	220.36	323.00	0.38	-0.36	0.49	0.38	0.32		
355.00	0.75	243.66	355.00	0.21	-0.62	0.41	1.29	1.09		
386.00	1.26	267.05	385.99	0.10	-1.14	0.49	2.08	1.65		
418.00	1.61	274.79	417.98	0.12	-1.94	0.79	1.25	1.09		

Cathedral Energy Services

Survey Report

Company:	Crestone Peak Resources	Local Co-ordinate Reference:	Well DAVIS 1P-9H-G266 - Slot DAVIS 1P-9H
Project:	DJ BASIN	TVD Reference:	23' KB @ 4940.00usft
Site:	S4-T2N-R66W	MD Reference:	23' KB @ 4940.00usft
Well:	DAVIS 1P-9H-G266	North Reference:	True
Wellbore:	OH	Survey Calculation Method:	Minimum Curvature
Design:	FINAL	Database:	USA EDM 5000 Multi Users DB

Survey									
Measured Depth (usft)	Inclination (°)	Azimuth (°)	Vertical Depth (usft)	+N/-S (usft)	+E/-W (usft)	Vertical Section (usft)	Dogleg Rate (°/100usf)	Build Rate (°/100u)	Formations / Comments
449.00	1.53	275.50	448.97	0.19	-2.79	1.16	0.27	-0.26	
480.00	1.80	269.25	479.96	0.23	-3.68	1.51	1.05	0.87	
512.00	2.20	260.90	511.94	0.12	-4.79	1.80	1.54	1.25	
543.00	2.63	258.52	542.91	-0.11	-6.08	2.03	1.42	1.39	
638.00	4.19	252.81	637.74	-1.57	-11.53	2.58	1.68	1.64	
732.00	5.83	251.23	731.38	-4.12	-19.33	2.94	1.75	1.74	
826.00	7.31	248.41	824.76	-7.86	-29.41	2.99	1.61	1.57	
921.00	9.03	244.28	918.79	-13.32	-41.75	2.21	1.91	1.81	
1,015.00	11.20	246.83	1,011.32	-20.11	-56.79	1.14	2.36	2.31	
1,109.00	13.65	248.32	1,103.12	-27.80	-75.49	0.52	2.63	2.61	
1,177.00	14.78	249.60	1,169.03	-33.79	-91.08	0.40	1.72	1.66	
1,271.00	16.71	247.04	1,259.50	-43.24	-114.76	-0.12	2.18	2.05	
1,365.00	19.86	247.37	1,348.74	-54.66	-141.95	-1.25	3.35	3.35	
1,487.00	20.88	249.64	1,463.12	-70.20	-181.46	-1.90	1.06	0.84	
1,554.00	22.40	251.21	1,525.39	-78.47	-204.74	-1.45	2.43	2.27	
1,648.00	23.65	251.01	1,611.90	-90.37	-239.53	-0.36	1.33	1.33	
1,743.00	21.94	249.16	1,699.48	-102.89	-274.14	0.09	1.95	-1.80	
1,837.00	21.74	246.39	1,786.74	-116.11	-306.50	-0.90	1.12	-0.21	
1,931.00	21.87	248.09	1,874.01	-129.61	-338.70	-2.22	0.69	0.14	
2,026.00	22.14	249.62	1,962.09	-142.45	-371.89	-2.56	0.67	0.28	
2,125.00	22.99	250.77	2,053.51	-155.31	-407.63	-2.04	0.97	0.86	
2,278.00	21.05	251.38	2,195.34	-173.93	-461.89	-0.38	1.28	-1.27	
2,373.00	22.50	250.67	2,283.56	-185.39	-495.21	0.60	1.55	1.53	
2,467.00	24.13	250.23	2,369.89	-197.85	-530.27	1.27	1.74	1.73	
2,562.00	22.85	249.35	2,457.01	-210.92	-565.81	1.53	1.40	-1.35	
2,656.00	23.51	248.48	2,543.42	-224.24	-600.33	1.21	0.79	0.70	
2,751.00	25.18	248.39	2,629.97	-238.63	-636.74	0.54	1.76	1.76	
2,845.00	24.13	247.25	2,715.40	-253.43	-673.06	-0.54	1.23	-1.12	
2,940.00	25.84	247.42	2,801.51	-268.89	-710.08	-1.99	1.80	1.80	
3,034.00	25.27	247.42	2,886.31	-284.46	-747.52	-3.40	0.61	-0.61	
3,129.00	24.52	247.16	2,972.48	-299.89	-784.41	-4.87	0.80	-0.79	
3,223.00	23.51	246.89	3,058.35	-314.82	-819.64	-6.46	1.08	-1.07	
3,318.00	22.24	246.45	3,145.87	-329.44	-853.55	-8.23	1.35	-1.34	
3,413.00	23.03	248.65	3,233.56	-343.39	-887.33	-9.40	1.22	0.83	
3,507.00	21.31	248.39	3,320.60	-356.38	-920.34	-9.95	1.83	-1.83	
3,602.00	21.49	248.83	3,409.05	-369.02	-952.62	-10.43	0.25	0.19	
3,696.00	21.93	248.39	3,496.39	-381.70	-984.99	-10.92	0.50	0.47	
3,791.00	23.47	248.12	3,584.03	-395.29	-1,019.04	-11.66	1.62	1.62	
3,885.00	21.36	247.68	3,670.92	-408.77	-1,052.25	-12.60	2.25	-2.24	
3,980.00	22.90	247.86	3,758.92	-422.30	-1,085.38	-13.62	1.62	1.62	
4,074.00	24.04	248.12	3,845.14	-436.33	-1,120.09	-14.55	1.22	1.21	
4,168.00	22.06	247.16	3,931.63	-450.32	-1,154.13	-15.67	2.14	-2.11	
4,263.00	23.25	251.73	4,019.31	-463.12	-1,188.38	-15.61	2.24	1.25	
4,381.00	24.96	249.62	4,127.01	-479.10	-1,233.84	-14.58	1.62	1.45	
4,476.00	24.57	249.27	4,213.28	-493.07	-1,271.10	-14.55	0.44	-0.41	
4,570.00	23.34	248.04	4,299.18	-506.95	-1,306.65	-15.05	1.41	-1.31	
4,665.00	21.14	247.42	4,387.11	-520.57	-1,339.92	-16.09	2.33	-2.32	
4,759.00	23.03	247.25	4,474.21	-534.19	-1,372.53	-17.37	2.01	2.01	
4,854.00	22.10	249.09	4,561.93	-547.75	-1,406.37	-18.17	1.23	-0.98	
4,948.00	22.72	251.29	4,648.83	-559.89	-1,440.08	-17.68	1.11	0.66	
5,043.00	24.83	249.88	4,735.77	-572.63	-1,476.19	-16.91	2.30	2.22	
5,138.00	24.08	249.88	4,822.25	-586.16	-1,513.12	-16.59	0.79	-0.79	
5,232.00	22.72	249.71	4,908.51	-599.05	-1,548.15	-16.34	1.45	-1.45	

Cathedral Energy Services

Survey Report

Company:	Crestone Peak Resources	Local Co-ordinate Reference:	Well DAVIS 1P-9H-G266 - Slot DAVIS 1P-9H
Project:	DJ BASIN	TVD Reference:	23' KB @ 4940.00usft
Site:	S4-T2N-R66W	MD Reference:	23' KB @ 4940.00usft
Well:	DAVIS 1P-9H-G266	North Reference:	True
Wellbore:	OH	Survey Calculation Method:	Minimum Curvature
Design:	FINAL	Database:	USA EDM 5000 Multi Users DB

Survey									
Measured Depth (usft)	Inclination (°)	Azimuth (°)	Vertical Depth (usft)	+N/-S (usft)	+E/-W (usft)	Vertical Section (usft)	Dogleg Rate (°/100usf)	Build Rate (°/100u)	Formations / Comments
5,326.00	21.67	250.32	4,995.55	-611.19	-1,581.52	-15.97	1.14	-1.12	
5,421.00	21.36	247.77	5,083.93	-623.65	-1,614.05	-16.18	1.04	-0.33	
5,515.00	23.82	249.79	5,170.71	-636.68	-1,647.72	-16.55	2.74	2.62	
5,609.00	22.41	249.44	5,257.16	-649.53	-1,682.31	-16.41	1.51	-1.50	
5,703.00	20.26	248.83	5,344.72	-661.71	-1,714.26	-16.57	2.30	-2.29	
5,798.00	20.04	245.66	5,433.90	-674.35	-1,744.43	-17.80	1.17	-0.23	
5,892.00	21.67	247.60	5,521.74	-687.61	-1,775.16	-19.40	1.88	1.73	
5,987.00	20.26	246.89	5,610.45	-700.75	-1,806.50	-20.68	1.51	-1.48	
6,081.00	18.11	248.65	5,699.23	-712.46	-1,835.08	-21.59	2.37	-2.29	
6,176.00	18.77	248.74	5,789.35	-723.37	-1,863.08	-21.96	0.70	0.69	
6,270.00	19.78	251.29	5,878.08	-733.96	-1,892.24	-21.62	1.40	1.07	
6,364.00	20.22	249.79	5,966.41	-744.67	-1,922.55	-20.99	0.72	0.47	
6,459.00	23.95	249.88	6,054.43	-756.98	-1,956.07	-20.72	3.93	3.93	
6,553.00	25.40	252.87	6,139.84	-769.48	-1,993.25	-19.35	2.03	1.54	
6,648.00	26.15	251.55	6,225.39	-782.11	-2,032.58	-17.33	0.99	0.79	
6,742.00	27.20	252.87	6,309.39	-794.99	-2,072.77	-15.26	1.28	1.12	
6,837.00	28.39	249.18	6,393.43	-809.42	-2,114.63	-14.04	2.20	1.25	
6,931.00	28.52	249.09	6,476.07	-825.37	-2,156.48	-14.26	0.15	0.14	
6,972.00	26.98	248.04	6,512.36	-832.34	-2,174.25	-14.54	3.94	-3.76	
7,025.00	25.84	246.54	6,559.83	-841.44	-2,196.00	-15.40	2.49	-2.15	
7,072.00	28.21	252.78	6,601.70	-848.81	-2,216.01	-15.26	7.86	5.04	
7,119.00	32.48	258.67	6,642.26	-854.58	-2,239.01	-12.58	11.06	9.09	
7,166.00	36.17	263.24	6,681.08	-858.69	-2,265.17	-7.23	9.57	7.85	
7,214.00	41.22	267.64	6,718.53	-861.01	-2,295.06	1.11	11.97	10.52	
7,261.00	43.77	271.68	6,753.19	-861.17	-2,326.80	12.12	7.94	5.43	
7,308.00	46.45	274.05	6,786.36	-859.49	-2,360.04	25.39	6.73	5.70	
7,355.00	47.55	278.89	6,818.43	-855.61	-2,394.18	41.03	7.89	2.34	
7,402.00	47.02	285.83	6,850.33	-848.23	-2,427.87	59.78	10.90	-1.13	
7,449.00	46.41	295.41	6,882.59	-836.23	-2,459.83	82.26	14.89	-1.30	
7,496.00	45.66	305.08	6,915.26	-819.24	-2,488.99	108.41	14.89	-1.60	
7,543.00	46.54	314.22	6,947.89	-797.66	-2,515.00	137.76	14.13	1.87	
7,591.00	46.06	323.36	6,981.09	-771.62	-2,537.82	170.17	13.80	-1.00	
7,638.00	45.84	333.73	7,013.81	-742.88	-2,555.41	203.25	15.85	-0.47	
7,685.00	44.25	343.22	7,047.06	-712.03	-2,567.62	236.43	14.67	-3.38	
7,732.00	43.64	352.98	7,080.94	-680.19	-2,574.34	268.60	14.46	-1.30	
7,779.00	45.26	1.77	7,114.52	-647.38	-2,575.81	299.83	13.53	3.45	
7,826.00	45.97	4.84	7,147.40	-613.85	-2,573.87	330.53	4.91	1.51	
7,874.00	46.10	5.72	7,180.72	-579.45	-2,570.69	361.62	1.35	0.27	
7,921.00	49.57	5.72	7,212.26	-544.79	-2,567.22	392.84	7.38	7.38	
7,968.00	53.92	6.42	7,241.36	-508.10	-2,563.31	425.81	9.33	9.26	
8,015.00	56.95	5.99	7,268.02	-469.63	-2,559.13	460.36	6.49	6.45	
8,063.00	59.55	5.63	7,293.28	-429.03	-2,555.00	496.92	5.45	5.42	
8,110.00	63.68	5.28	7,315.62	-387.87	-2,551.07	534.06	8.81	8.79	
8,157.00	67.15	2.56	7,335.17	-345.25	-2,548.16	572.94	9.07	7.38	
8,204.00	68.69	1.85	7,352.84	-301.73	-2,546.49	613.09	3.56	3.28	
8,252.00	70.62	1.42	7,369.52	-256.74	-2,545.21	654.75	4.11	4.02	
8,299.00	73.92	0.98	7,383.84	-211.99	-2,544.27	696.32	7.08	7.02	
8,347.00	78.35	0.80	7,395.33	-165.41	-2,543.55	739.67	9.24	9.23	
8,356.85	79.51	0.45	7,397.23	-155.74	-2,543.44	748.68	12.30	11.78	TPZ - 8356.85 (2174 FNL, 1282 FWL)
8,394.00	83.89	359.13	7,402.59	-118.99	-2,543.58	783.13	12.30	11.79	
8,441.00	86.88	359.13	7,406.37	-72.15	-2,544.29	827.23	6.36	6.36	
8,535.00	88.51	359.66	7,410.15	21.76	-2,545.29	915.49	1.82	1.73	
8,629.00	88.81	359.66	7,412.35	115.74	-2,545.84	1,003.66	0.32	0.32	

Cathedral Energy Services

Survey Report

Company:	Crestone Peak Resources	Local Co-ordinate Reference:	Well DAVIS 1P-9H-G266 - Slot DAVIS 1P-9H
Project:	DJ BASIN	TVD Reference:	23' KB @ 4940.00usft
Site:	S4-T2N-R66W	MD Reference:	23' KB @ 4940.00usft
Well:	DAVIS 1P-9H-G266	North Reference:	True
Wellbore:	OH	Survey Calculation Method:	Minimum Curvature
Design:	FINAL	Database:	USA EDM 5000 Multi Users DB

Survey									
Measured Depth (usft)	Inclination (°)	Azimuth (°)	Vertical Depth (usft)	+N/-S (usft)	+E/-W (usft)	Vertical Section (usft)	Dogleg Rate (°/100usf)	Build Rate (°/100u)	Formations / Comments
8,724.00	89.12	359.75	7,414.06	210.72	-2,546.33	1,092.75	0.34	0.33	
8,819.00	88.64	358.78	7,415.92	305.69	-2,547.55	1,182.08	1.14	-0.51	
8,913.00	87.67	357.55	7,418.95	399.59	-2,550.56	1,271.04	1.67	-1.03	
9,008.00	89.47	358.16	7,421.32	494.49	-2,554.11	1,361.13	2.00	1.89	
9,102.00	90.62	358.69	7,421.24	588.45	-2,556.70	1,450.00	1.35	1.22	
9,197.00	91.01	358.95	7,419.89	683.42	-2,558.65	1,539.59	0.49	0.41	
9,291.00	91.14	358.51	7,418.13	777.38	-2,560.74	1,628.28	0.49	0.14	
9,386.00	91.06	358.25	7,416.31	872.33	-2,563.42	1,718.10	0.29	-0.08	
9,480.00	88.81	356.49	7,416.41	966.22	-2,567.73	1,807.51	3.04	-2.39	
9,574.00	89.74	357.02	7,417.60	1,060.06	-2,573.05	1,897.23	1.14	0.99	
9,668.00	89.82	358.69	7,417.96	1,153.99	-2,576.57	1,986.40	1.78	0.09	
9,763.00	91.14	359.04	7,417.17	1,248.97	-2,578.45	2,075.97	1.44	1.39	
9,857.00	90.92	0.98	7,415.48	1,342.95	-2,578.44	2,163.94	2.08	-0.23	
9,952.00	90.70	0.10	7,414.13	1,437.93	-2,577.54	2,252.54	0.95	-0.23	
10,047.00	89.87	358.95	7,413.66	1,532.92	-2,578.33	2,341.74	1.49	-0.87	
10,141.00	90.22	0.54	7,413.59	1,626.92	-2,578.75	2,429.88	1.73	0.37	
10,236.00	89.60	1.42	7,413.74	1,721.90	-2,577.12	2,518.23	1.13	-0.65	
10,330.00	90.35	0.80	7,413.78	1,815.89	-2,575.30	2,605.57	1.04	0.80	
10,424.00	88.64	0.45	7,414.61	1,909.87	-2,574.28	2,693.19	1.86	-1.82	
10,519.00	89.12	0.18	7,416.46	2,004.85	-2,573.75	2,781.92	0.58	0.51	
10,613.00	89.96	0.54	7,417.22	2,098.85	-2,573.16	2,869.70	0.97	0.89	
10,708.00	89.65	359.48	7,417.54	2,193.84	-2,573.15	2,958.62	1.16	-0.33	
10,802.00	89.96	358.87	7,417.86	2,287.83	-2,574.50	3,047.09	0.73	0.33	
10,897.00	90.09	358.69	7,417.82	2,382.81	-2,576.52	3,136.71	0.23	0.14	
10,991.00	91.10	0.36	7,416.84	2,476.80	-2,577.30	3,224.97	2.08	1.07	
11,085.00	89.82	0.80	7,416.09	2,570.79	-2,576.35	3,312.62	1.44	-1.36	
11,180.00	90.00	0.27	7,416.24	2,665.78	-2,575.46	3,401.23	0.59	0.19	
11,274.00	90.44	0.18	7,415.88	2,759.78	-2,575.10	3,489.10	0.48	0.47	
11,369.00	90.84	0.36	7,414.82	2,854.78	-2,574.65	3,577.86	0.46	0.42	
11,463.00	91.23	0.18	7,413.12	2,948.76	-2,574.20	3,665.69	0.46	0.41	
11,557.00	92.15	0.80	7,410.35	3,042.71	-2,573.40	3,753.36	1.18	0.98	
11,651.00	92.15	0.71	7,406.82	3,136.64	-2,572.16	3,840.85	0.10	0.00	
11,745.00	90.00	1.85	7,405.06	3,230.59	-2,570.06	3,928.06	2.59	-2.29	
11,839.00	89.08	1.33	7,405.81	3,324.55	-2,567.46	4,015.10	1.12	-0.98	
11,934.00	89.43	1.24	7,407.05	3,419.52	-2,565.33	4,103.25	0.38	0.37	
12,028.00	89.78	1.24	7,407.69	3,513.50	-2,563.29	4,190.51	0.37	0.37	
12,122.00	89.25	0.10	7,408.49	3,607.48	-2,562.19	4,278.11	1.34	-0.56	
12,216.00	89.52	0.27	7,409.50	3,701.48	-2,561.89	4,365.99	0.34	0.29	
12,311.00	89.87	359.66	7,410.00	3,796.48	-2,561.95	4,454.94	0.74	0.37	
12,405.00	89.78	358.60	7,410.29	3,890.46	-2,563.37	4,543.43	1.13	-0.10	
12,500.00	90.04	358.51	7,410.44	3,985.43	-2,565.77	4,633.17	0.29	0.27	
12,594.00	89.87	357.28	7,410.51	4,079.37	-2,569.22	4,722.32	1.32	-0.18	
12,689.00	89.47	357.81	7,411.06	4,174.28	-2,573.29	4,812.60	0.70	-0.42	
12,783.00	89.91	359.39	7,411.57	4,268.25	-2,575.59	4,901.37	1.74	0.47	
12,878.00	90.53	0.18	7,411.20	4,363.24	-2,575.94	4,990.43	1.06	0.65	
12,972.00	90.40	359.04	7,410.44	4,457.24	-2,576.58	5,078.64	1.22	-0.14	
13,067.00	91.23	0.36	7,409.09	4,552.22	-2,577.08	5,167.73	1.64	0.87	
13,161.00	90.53	1.77	7,407.65	4,646.19	-2,575.33	5,255.09	1.67	-0.74	
13,255.00	91.01	1.59	7,406.38	4,740.14	-2,572.58	5,342.07	0.55	0.51	
13,350.00	91.27	2.47	7,404.49	4,835.06	-2,569.21	5,429.74	0.97	0.27	
13,444.00	90.18	2.21	7,403.30	4,928.98	-2,565.38	5,516.30	1.19	-1.16	
13,539.00	88.86	2.65	7,404.10	5,023.88	-2,561.35	5,603.73	1.46	-1.39	
13,633.00	89.25	1.77	7,405.65	5,117.80	-2,557.73	5,690.38	1.02	0.41	

Cathedral Energy Services

Survey Report

Company:	Crestone Peak Resources	Local Co-ordinate Reference:	Well DAVIS 1P-9H-G266 - Slot DAVIS 1P-9H
Project:	DJ BASIN	TVD Reference:	23' KB @ 4940.00usft
Site:	S4-T2N-R66W	MD Reference:	23' KB @ 4940.00usft
Well:	DAVIS 1P-9H-G266	North Reference:	True
Wellbore:	OH	Survey Calculation Method:	Minimum Curvature
Design:	FINAL	Database:	USA EDM 5000 Multi Users DB

Survey									
Measured Depth (usft)	Inclination (°)	Azimuth (°)	Vertical Depth (usft)	+N/-S (usft)	+E/-W (usft)	Vertical Section (usft)	Dogleg Rate (°/100usf)	Build Rate (°/100u)	Formations / Comments
13,727.00	90.26	1.59	7,406.05	5,211.76	-2,554.97	5,777.36	1.09	1.07	
13,822.00	90.70	0.10	7,405.26	5,306.74	-2,553.57	5,865.79	1.64	0.46	
13,917.00	89.78	358.60	7,404.86	5,401.73	-2,554.65	5,955.09	1.85	-0.97	
14,042.00	91.01	358.51	7,404.00	5,526.69	-2,557.80	6,073.17	0.99	0.98	
14,137.00	90.53	358.87	7,402.72	5,621.65	-2,559.97	6,162.83	0.63	-0.51	
14,232.00	89.91	0.27	7,402.36	5,716.65	-2,560.68	6,252.01	1.61	-0.65	
14,327.00	90.53	359.13	7,401.99	5,811.64	-2,561.18	6,341.11	1.37	0.65	
14,421.00	88.64	0.18	7,402.67	5,905.63	-2,561.75	6,429.30	2.30	-2.01	
14,515.00	89.03	359.92	7,404.58	5,999.61	-2,561.66	6,517.24	0.50	0.41	
14,609.00	89.21	359.31	7,406.03	6,093.60	-2,562.30	6,605.45	0.68	0.19	
14,704.00	89.39	358.78	7,407.19	6,188.58	-2,563.88	6,694.92	0.59	0.19	
14,799.00	89.65	358.60	7,407.98	6,283.55	-2,566.05	6,784.59	0.33	0.27	
14,893.00	90.09	359.75	7,408.20	6,377.54	-2,567.40	6,873.05	1.31	0.47	
14,987.00	90.18	3.26	7,407.97	6,471.49	-2,564.94	6,960.13	3.74	0.10	
15,082.00	90.84	4.93	7,407.13	6,566.24	-2,558.15	7,046.44	1.89	0.69	
15,176.00	91.41	6.25	7,405.28	6,659.77	-2,549.00	7,130.78	1.53	0.61	
15,246.00	91.71	5.46	7,403.38	6,729.38	-2,541.86	7,193.43	1.21	0.43	LAST SURVEY - 15246.00' MD
15,305.00	91.71	5.43	7,401.62	6,788.09	-2,536.26	7,246.42	0.05	0.00	PTB - 15305.00' MD (469 FNL, 1273 FWL)

Targets									
Target Name	Dip Angle (°)	Dip Dir. (°)	TVD (usft)	+N/-S (usft)	+E/-W (usft)	Northing (usft)	Easting (usft)	Latitude	Longitude
DAVIS 1P-9H TGT	0.00	0.00	7,398.00	2,072.95	-2,577.71	1,301,927.17	3,199,216.67	40.159987	-104.787222
- hit/miss target									
- Shape									
- actual wellpath misses target center by 19.63usft at 10586.92usft MD (7417.15 TVD, 2072.77 N, -2573.39 E)									
- Point									
DAVIS 1P 4693' VS	0.00	0.00	7,409.00	4,048.42	-2,568.08	1,303,902.65	3,199,210.21	40.165410	-104.787188
- actual wellpath misses target center by 1.47usft at 12563.03usft MD (7410.46 TVD, 4048.43 N, -2567.86 E)									
- Point									
DAVIS 1P-9H-G266 BHL	0.00	0.00	7,409.00	6,796.95	-2,553.88	1,306,651.20	3,199,202.03	40.172955	-104.787139
- actual wellpath misses target center by 21.06usft at 15305.00usft MD (7401.62 TVD, 6788.09 N, -2536.26 E)									
- Point									
DAVIS 1P-9H-G266 TPZ	0.00	0.00	7,418.00	-155.74	-2,544.88	1,299,698.82	3,199,267.65	40.153869	-104.787104
- actual wellpath misses target center by 20.50usft at 8359.86usft MD (7397.76 TVD, -152.78 N, -2543.42 E)									
- Point									
DAVIS 1P 2881' VS	0.00	0.00	7,415.00	2,108.99	-2,578.02	1,301,963.20	3,199,216.07	40.160086	-104.787223
- actual wellpath misses target center by 5.42usft at 10623.14usft MD (7417.23 TVD, 2108.99 N, -2573.08 E)									
- Point									

Design Annotations					
Measured Depth (usft)	Vertical Depth (usft)	Local Coordinates			
		+N/-S (usft)	+E/-W (usft)	Comment	
8,356.85	7,397.23	-155.74	-2,543.44	TPZ - 8356.85 (2174 FNL, 1282 FWL)	
15,246.00	7,403.38	6,729.38	-2,541.86	LAST SURVEY - 15246.00' MD	
15,305.00	7,401.62	6,788.09	-2,536.26	PTB - 15305.00' MD (469 FNL, 1273 FWL)	

Checked By: _____ Approved By: _____ Date: _____