



CRESTONE PEAK
RESOURCES

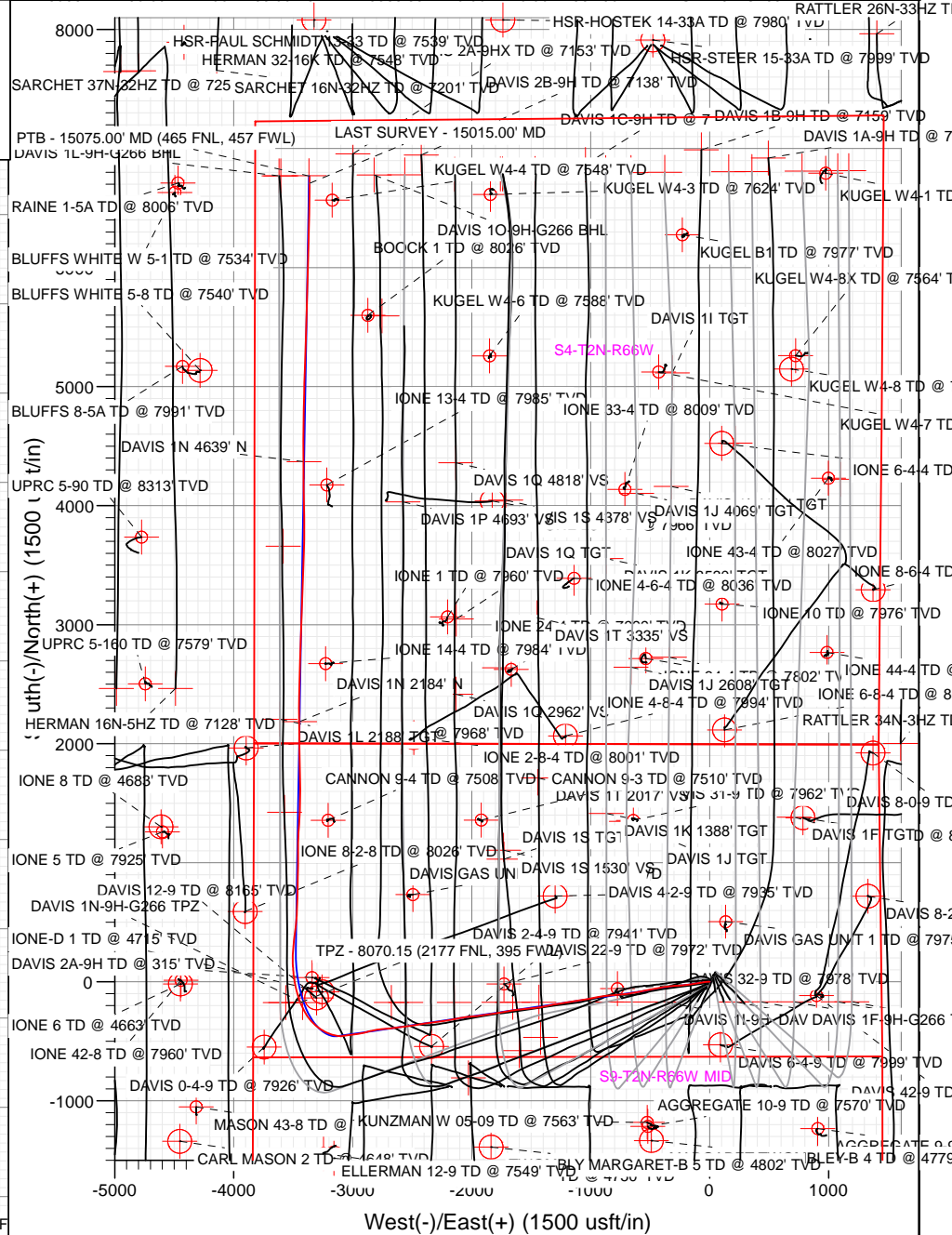
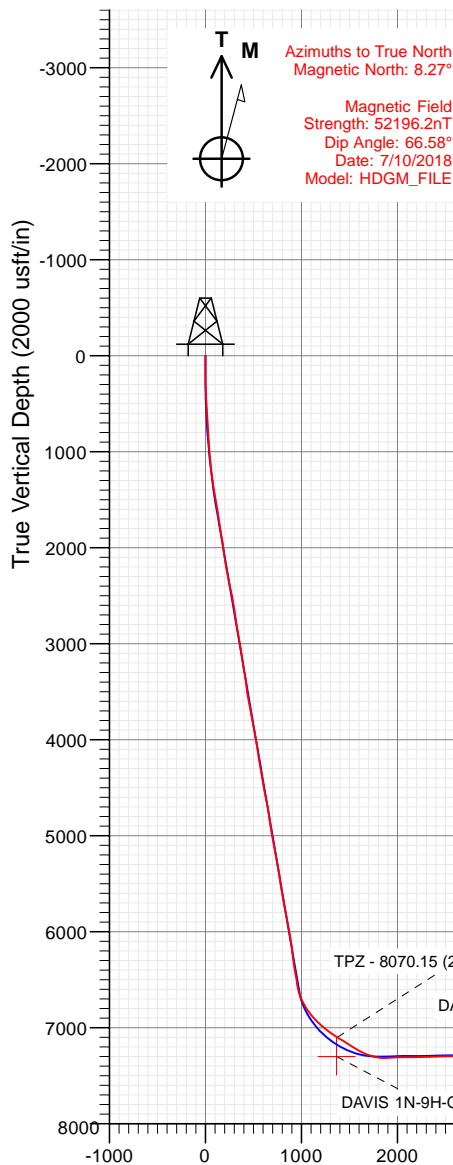
SECTION DETAILS

Sec	MD	Inc	Azi	TVD	+N/-S	+E/-W	Dleg	TFace	VSec	Target
1	0.00	0.00	0.00	0.00	0.00	0.00	0.00	0.00	0.00	
2	200.00	0.00	0.00	200.00	0.00	0.00	0.00	0.00	0.00	
3	450.00	5.00	265.00	449.68	-0.95	-10.86	2.00	265.00	3.98	
4	1649.43	28.98	261.61	1588.43	-48.59	-355.42	2.00	-4.04	114.71	
5	7408.05	28.98	261.61	6626.10	-455.62	-3115.49	0.00	0.00	978.97	
6	8598.41	90.82	0.95	7301.35	273.46	-3478.60	8.00	97.79	1793.46	
7	10509.41	90.82	0.95	7274.00	2184.00	-3446.91	0.00	0.00	3490.13	DAVIS 1N 2184' N
8	10538.88	90.23	1.00	7273.73	2213.47	-3446.41	2.00	175.10	3516.30	
9	12683.13	90.23	1.00	7265.02	4357.37	-3408.98	0.00	0.00	5419.37	
10	12694.76	90.00	1.00	7265.00	4369.00	-3408.77	2.00	-179.92	5429.70	DAVIS 1N 4639' N
11	15098.27	90.00	1.00	7265.00	6772.14	-3366.83	0.00	0.00	7562.90	DAVIS 1N-9H-G266 BHL

FINAL
DAVIS 1N-9H-G266
371227 185117 38537 185203
23 KB @ 4940.00usft
Ground Level @ 4917.00
North American Datum 1983
Well DAVIS 1N-9H-G266 - Slot DAVIS 1N-9H, True North

Type	Target	No Target (Freehand)	Azimuth	Origin Type	Slot	N/S	E/W	From TVD
Name	TVD	+N/-S	+E/-W	Latitude	Longitude			
DAVIS 1N 4639' N	7265.00	4369.00	-3408.77	40.166337	-104.790161			
DAVIS 1N-9H-G266 BHL	7265.00	6772.14	-3366.83	40.172934	-104.790112			
DAVIS 1N 2184' N	7274.00	2184.00	-3446.91	40.160339	-104.790297			
DAVIS 1N-9H-G266 TPZ	7301.00	-174.18	-3421.84	40.153866	-104.790206			

Project: DJ BASIN
Site: S4-T2N-R66W
Well: DAVIS 1N-9H-G266
Wellbore: OH
Design: FINAL



Vertical Section at 333.57° (2000 usft/in)

WELL DETAILS: DAVIS 1N-9H-G266

+N/-S	+E/-W	Northing	Easting	Latitude	Longitude	
0.00	0.00	1299892.71	3201820.96	40.154345	-104.777964	DAVIS 1N-9H

CATHEDRAL





CRESTONE PEAK
RESOURCES

SECTION DETAILS

Sec	MD	Inc	Azi	TVD	+N/-S	+E/-W	Dleg	TFace	Vsect	Target
1	0.00	0.00	0.00	0.00	0.00	0.00	0.00	0.00	0.00	
2	200.00	0.00	0.00	200.00	0.00	0.00	0.00	0.00	0.00	
3	450.00	5.00	265.00	449.68	-0.95	-10.86	2.00	265.00	3.98	
4	1649.43	28.98	261.61	1588.43	-48.59	-355.42	2.00	-4.04	114.71	
5	7408.05	28.98	261.61	6626.10	-455.62	-3115.49	0.00	0.00	978.97	
6	8598.41	90.82	0.95	7301.35	273.46	-3478.60	8.00	97.79	1793.46	
7	10509.41	90.82	0.95	7274.00	2184.00	-3446.91	0.00	0.00	3490.13	DAVIS 1N 2184' N
8	10538.88	90.23	1.00	7273.73	2213.47	-3446.41	2.00	175.10	3516.30	
9	12683.13	90.23	1.00	7265.02	4357.37	-3408.98	0.00	0.00	5419.37	
10	12694.76	90.00	1.00	7265.00	4369.00	-3408.77	2.00	-179.92	5429.70	DAVIS 1N 4639' N
11	15098.27	90.00	1.00	7265.00	6772.14	-3366.83	0.00	0.00	7562.90	DAVIS 1N-9H-G266 BHL

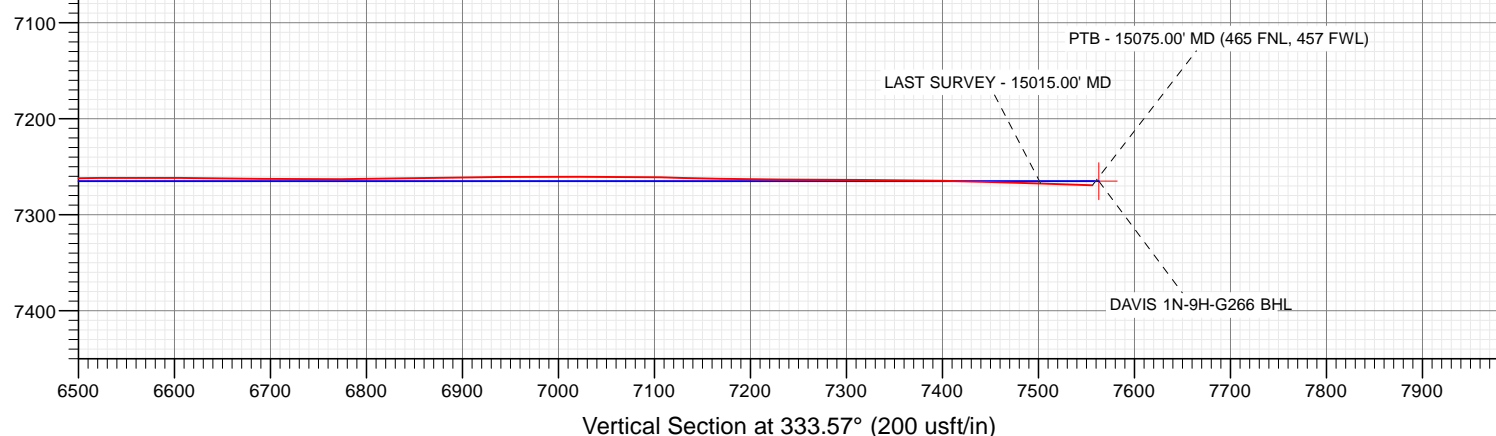
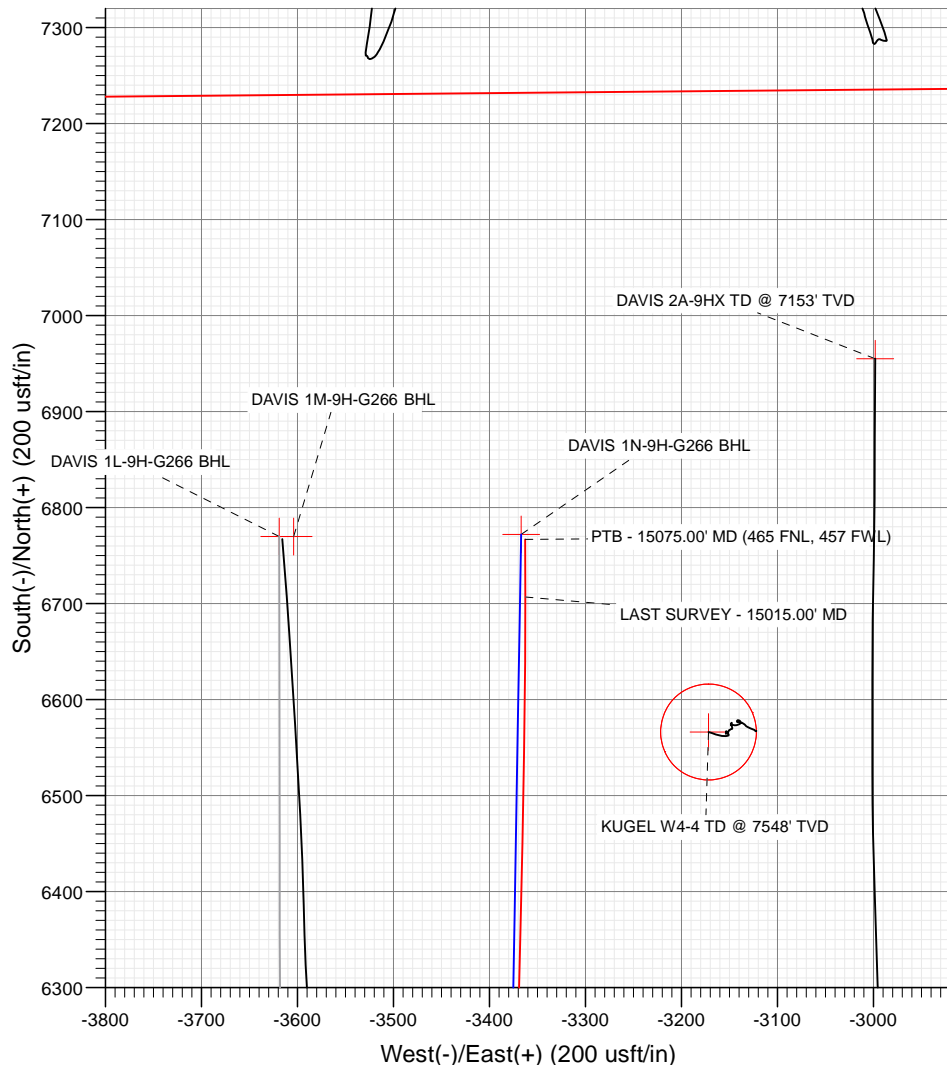
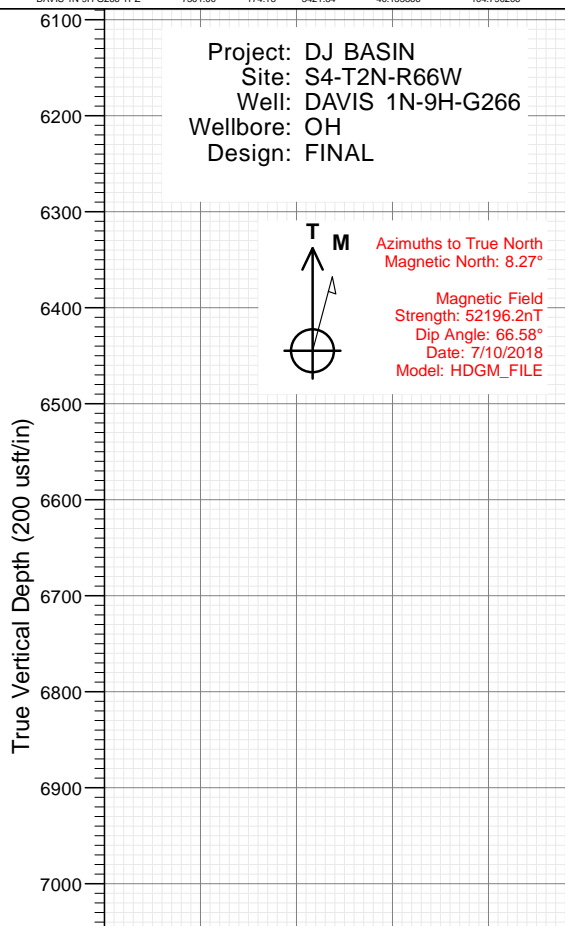
FINAL
DAVIS 1N-9H-G266
371237 185117 385337 185203
23 KB @ 4940.00usft
Ground Level @ 4917.00
North American Datum 1983
Well DAVIS 1N-9H-G266 - Slot DAVIS 1N-9H, True North

Type	Target	No Target (Freehand)	Azimuth	Origin Type	Slot	N/S	E/W	From TVD
Name	TVD	+N/-S	+E/-W	Latitude	Longitude			
DAVIS 1N 4639' N	7265.00	4369.00	-3408.77	40.166337	-104.790161			
DAVIS 1N-9H-G266 BHL	7265.00	6772.14	-3366.83	40.172934	-104.790012			
DAVIS 1N 2184' N	7274.00	2184.00	-3446.91	40.160339	-104.790297			
DAVIS 1N-9H-G266 TPZ	7301.00	-174.18	-3421.84	40.153866	-104.790206			

Project: DJ BASIN
Site: S4-T2N-R66W
Well: DAVIS 1N-9H-G266
Wellbore: OH
Design: FINAL



Azimuths to True North
Magnetic North: 8.27°
Magnetic Field
Strength: 52196.2nT
Dip Angle: 66.58°
Date: 7/10/2018
Model: HDGM_FILE



WELL DETAILS: DAVIS 1N-9H-G266

4917.00
+N/-S 0.00 +E/-W 0.00 Northing 1299892.71 Easting 3201820.96 Latitude 40.154345 Longitude -104.777964 DAVIS 1N-9H

CATHEDRAL



Cathedral Energy Services

Survey Report

Company:	Crestone Peak Resources	Local Co-ordinate Reference:	Well DAVIS 1N-9H-G266 - Slot DAVIS 1N-9H
Project:	DJ BASIN	TVD Reference:	23' KB @ 4940.00usft
Site:	S4-T2N-R66W	MD Reference:	23' KB @ 4940.00usft
Well:	DAVIS 1N-9H-G266	North Reference:	True
Wellbore:	OH	Survey Calculation Method:	Minimum Curvature
Design:	FINAL	Database:	USA EDM 5000 Multi Users DB

Project	DJ BASIN		
Map System:	US State Plane 1983	System Datum:	Mean Sea Level
Geo Datum:	North American Datum 1983		
Map Zone:	Colorado Northern Zone		

Site		S4-T2N-R66W			
Site Position:		Northing:	1,300,048.95 usft	Latitude:	40.154783
From:	Map	Easting:	3,201,389.75 usft	Longitude:	-104.779502
Position Uncertainty:	0.00 usft	Slot Radius:	13-3/16 "	Grid Convergence:	0.47 °

Well	DAVIS 1N-9H-G266 - Slot DAVIS 1N-9H					
Well Position	+N/-S	0.00 usft	Northing:	1,299,892.71 usft	Latitude:	40.154345
	+E/-W	0.00 usft	Easting:	3,201,820.96 usft	Longitude:	-104.777964
Position Uncertainty		0.00 usft	Wellhead Elevation:	usft	Ground Level:	4,917.00 usft

Wellbore	OH				
Magnetics	Model Name	Sample Date	Declination (°)	Dip Angle (°)	Field Strength (nT)
	HDGM_FILE	7/10/2018	8.27	66.58	52,196.20000000

Design	FINAL				
Audit Notes:					
Version:	1.0	Phase:	ACTUAL	Tie On Depth:	0.00
Vertical Section:	Depth From (TVD) (usft)	+N/-S (usft)	+E/-W (usft)	Direction (°)	
	0.00	0.00	0.00	333.57	

Survey Program	Date	7/23/2018			
From (usft)	To (usft)	Survey (Wellbore)	Tool Name	Description	
103.00	2,165.00	Survey #1 (OH)	VESSI_GYROFLEX	VESSI Gyroflex Gyro	
2,269.00	15,075.00	Survey #2 (OH)	MWD+HDGM	OWSG MWD + HDGM	

Survey									
Measured Depth (usft)	Inclination (°)	Azimuth (°)	Vertical Depth (usft)	+N/-S (usft)	+E/-W (usft)	Vertical Section (usft)	Dogleg Rate (°/100usf)	Build Rate (°/100u)	Formations / Comments
0.00	0.00	0.00	0.00	0.00	0.00	0.00	0.00	0.00	
103.00	0.24	29.81	103.00	0.19	0.11	0.12	0.23	0.23	
134.00	0.75	278.31	134.00	0.27	-0.06	0.27	2.80	1.65	
165.00	1.37	284.38	164.99	0.39	-0.62	0.63	2.03	2.00	
196.00	1.56	273.74	195.98	0.51	-1.40	1.08	1.07	0.61	
291.00	3.41	267.85	290.89	0.49	-5.52	2.90	1.96	1.95	
385.00	5.70	269.43	384.59	0.34	-12.98	6.08	2.44	2.44	
480.00	8.09	264.86	478.89	-0.31	-24.35	10.57	2.58	2.52	
574.00	9.48	263.27	571.79	-1.80	-38.63	15.58	1.50	1.48	
641.00	11.41	262.43	637.68	-3.32	-50.68	19.58	2.89	2.88	
736.00	12.61	258.44	730.60	-6.64	-70.16	25.28	1.54	1.26	
830.00	12.76	258.49	822.30	-10.77	-90.38	30.59	0.16	0.16	

Cathedral Energy Services

Survey Report

Company:	Crestone Peak Resources	Local Co-ordinate Reference:	Well DAVIS 1N-9H-G266 - Slot DAVIS 1N-9H
Project:	DJ BASIN	TVD Reference:	23' KB @ 4940.00usft
Site:	S4-T2N-R66W	MD Reference:	23' KB @ 4940.00usft
Well:	DAVIS 1N-9H-G266	North Reference:	True
Wellbore:	OH	Survey Calculation Method:	Minimum Curvature
Design:	FINAL	Database:	USA EDM 5000 Multi Users DB

Survey									
Measured Depth (usft)	Inclination (°)	Azimuth (°)	Vertical Depth (usft)	+N/-S (usft)	+E/-W (usft)	Vertical Section (usft)	Dogleg Rate (°/100usf)	Build Rate (°/100u)	Formations / Comments
924.00	12.96	261.00	913.94	-14.49	-110.96	36.42	0.63	0.21	
1,019.00	14.52	261.91	1,006.22	-17.83	-133.28	43.35	1.66	1.64	
1,113.00	16.96	262.78	1,096.69	-21.21	-158.55	51.57	2.61	2.60	
1,208.00	18.61	262.42	1,187.15	-24.95	-187.32	61.03	1.74	1.74	
1,302.00	19.87	263.47	1,275.90	-28.75	-218.06	71.32	1.39	1.34	
1,396.00	22.78	265.27	1,363.45	-32.07	-252.08	83.48	3.17	3.10	
1,490.00	24.56	265.50	1,449.54	-35.10	-289.69	97.51	1.90	1.89	
1,585.00	26.22	265.45	1,535.36	-38.32	-330.30	112.71	1.75	1.75	
1,680.00	27.00	262.96	1,620.30	-42.62	-372.62	127.69	1.43	0.82	
1,774.00	28.12	260.85	1,703.64	-48.76	-415.67	141.35	1.58	1.19	
1,868.00	29.86	257.95	1,785.86	-57.17	-460.43	153.75	2.38	1.85	
1,962.00	32.02	258.19	1,866.48	-67.16	-507.72	165.85	2.30	2.30	
2,057.00	30.37	258.59	1,947.74	-77.06	-555.91	178.43	1.75	-1.74	
2,165.00	28.68	259.77	2,041.71	-87.07	-608.18	192.74	1.65	-1.56	
2,269.00	25.62	259.29	2,134.24	-95.68	-654.84	205.79	2.95	-2.94	
2,364.00	27.77	262.63	2,219.12	-102.34	-696.98	218.59	2.76	2.26	
2,458.00	30.89	265.79	2,301.06	-106.92	-742.78	234.87	3.70	3.32	
2,553.00	29.40	265.88	2,383.21	-110.39	-790.36	252.94	1.57	-1.57	
2,647.00	30.28	263.59	2,464.75	-114.69	-836.92	269.82	1.53	0.94	
2,742.00	28.21	263.50	2,547.64	-119.91	-883.04	285.67	2.18	-2.18	
2,836.00	28.87	260.78	2,630.22	-126.06	-927.52	299.96	1.55	0.70	
2,931.00	29.62	258.76	2,713.11	-134.31	-973.18	312.90	1.30	0.79	
3,025.00	28.08	258.14	2,795.44	-143.38	-1,017.62	324.55	1.67	-1.64	
3,120.00	30.94	261.66	2,878.11	-151.52	-1,063.68	337.76	3.52	3.01	
3,214.00	29.49	260.43	2,959.34	-158.87	-1,110.40	351.98	1.68	-1.54	
3,309.00	27.86	259.99	3,042.69	-166.62	-1,155.32	365.03	1.73	-1.72	
3,404.00	29.71	262.80	3,125.95	-173.43	-1,200.54	379.06	2.41	1.95	
3,498.00	27.47	260.25	3,208.49	-180.02	-1,245.03	392.96	2.71	-2.38	
3,593.00	29.40	260.34	3,292.02	-187.65	-1,289.62	405.98	2.03	2.03	
3,687.00	27.03	258.41	3,374.85	-195.81	-1,333.29	418.11	2.70	-2.52	
3,782.00	27.95	258.23	3,459.12	-204.69	-1,376.23	429.27	0.97	0.97	
3,876.00	29.40	261.22	3,541.59	-212.71	-1,420.61	441.84	2.17	1.54	
3,971.00	30.23	263.68	3,624.02	-218.90	-1,467.42	457.14	1.56	0.87	
4,065.00	27.03	262.80	3,706.52	-224.18	-1,512.15	472.31	3.43	-3.40	
4,160.00	28.08	264.56	3,790.74	-229.01	-1,555.82	487.43	1.40	1.11	
4,254.00	30.67	263.07	3,872.65	-234.00	-1,601.65	503.36	2.86	2.76	
4,372.00	26.98	262.98	3,976.01	-240.90	-1,658.11	522.31	3.13	-3.13	
4,466.00	30.98	260.16	4,058.23	-247.65	-1,703.14	536.31	4.50	4.26	
4,561.00	29.80	259.64	4,140.18	-256.07	-1,750.45	549.83	1.27	-1.24	
4,656.00	27.77	259.46	4,223.43	-264.36	-1,795.43	562.42	2.14	-2.14	
4,750.00	27.95	260.78	4,306.54	-271.90	-1,838.71	574.94	0.68	0.19	
4,845.00	29.31	261.92	4,389.92	-278.74	-1,883.71	588.84	1.54	1.43	
4,939.00	30.94	264.65	4,471.23	-284.22	-1,930.55	604.78	2.26	1.73	
5,034.00	27.42	264.03	4,554.16	-288.78	-1,976.64	621.22	3.72	-3.71	
5,128.00	28.48	264.12	4,637.19	-293.32	-2,020.46	636.65	1.13	1.13	
5,223.00	31.42	261.22	4,719.50	-299.43	-2,067.47	652.11	3.45	3.09	
5,318.00	28.70	259.29	4,801.72	-307.45	-2,114.37	665.80	3.04	-2.86	
5,412.00	28.96	258.67	4,884.07	-316.11	-2,158.86	677.85	0.42	0.28	
5,507.00	27.91	260.34	4,967.61	-324.36	-2,203.33	690.25	1.39	-1.11	
5,601.00	30.23	260.43	5,049.76	-331.99	-2,248.36	703.47	2.47	2.47	
5,695.00	31.60	264.74	5,130.41	-338.18	-2,296.23	719.23	2.77	1.46	
5,789.00	29.66	263.15	5,211.29	-343.21	-2,343.85	735.92	2.24	-2.06	
5,883.00	31.03	260.69	5,292.42	-349.91	-2,390.85	750.84	1.97	1.46	

Cathedral Energy Services

Survey Report

Company:	Crestone Peak Resources	Local Co-ordinate Reference:	Well DAVIS 1N-9H-G266 - Slot DAVIS 1N-9H
Project:	DJ BASIN	TVD Reference:	23' KB @ 4940.00usft
Site:	S4-T2N-R66W	MD Reference:	23' KB @ 4940.00usft
Well:	DAVIS 1N-9H-G266	North Reference:	True
Wellbore:	OH	Survey Calculation Method:	Minimum Curvature
Design:	FINAL	Database:	USA EDM 5000 Multi Users DB

Survey									
Measured Depth (usft)	Inclination (°)	Azimuth (°)	Vertical Depth (usft)	+N/-S (usft)	+E/-W (usft)	Vertical Section (usft)	Dogleg Rate (°/100usf)	Build Rate (°/100u)	Formations / Comments
5,978.00	27.77	259.81	5,375.17	-357.79	-2,436.81	764.24	3.46	-3.43	
6,072.00	29.71	261.83	5,457.59	-364.97	-2,481.43	777.67	2.31	2.06	
6,167.00	26.98	260.43	5,541.19	-371.90	-2,525.99	791.30	2.96	-2.87	
6,261.00	26.59	263.24	5,625.11	-377.92	-2,567.91	804.56	1.41	-0.41	
6,355.00	27.51	263.59	5,708.83	-382.82	-2,610.37	819.08	0.99	0.98	
6,450.00	28.13	262.71	5,792.85	-388.11	-2,654.39	833.93	0.78	0.65	
6,544.00	29.14	264.82	5,875.35	-392.99	-2,699.17	849.49	1.52	1.07	
6,638.00	31.16	265.00	5,956.63	-397.18	-2,746.19	866.68	2.15	2.15	
6,733.00	30.54	260.69	6,038.20	-403.23	-2,794.50	882.76	2.42	-0.65	
6,827.00	30.37	258.14	6,119.23	-411.97	-2,841.32	895.77	1.39	-0.18	
6,922.00	26.02	254.54	6,202.95	-422.47	-2,884.93	905.78	4.91	-4.58	
7,017.00	26.59	257.53	6,288.11	-432.62	-2,925.78	914.88	1.52	0.60	
7,111.00	27.99	263.07	6,371.66	-439.82	-2,968.23	927.32	3.08	1.49	
7,205.00	27.20	262.89	6,454.97	-445.14	-3,011.44	941.79	0.85	-0.84	
7,299.00	28.21	260.25	6,538.19	-451.56	-3,054.66	955.28	1.69	1.07	
7,394.00	30.98	267.02	6,620.81	-456.64	-3,101.23	971.46	4.57	2.92	
7,441.00	34.41	276.42	6,660.39	-455.78	-3,126.53	983.49	13.02	7.30	
7,488.00	33.57	284.16	6,699.37	-451.12	-3,152.34	999.15	9.37	-1.79	
7,535.00	36.12	289.43	6,737.95	-443.33	-3,178.01	1,017.56	8.39	5.43	
7,582.00	37.09	293.83	6,775.69	-432.99	-3,204.05	1,038.40	5.95	2.06	
7,629.00	39.38	296.99	6,812.61	-420.50	-3,230.30	1,061.28	6.41	4.87	
7,676.00	42.50	300.24	6,848.11	-405.73	-3,257.31	1,086.52	8.04	6.64	
7,723.00	44.25	304.55	6,882.28	-388.43	-3,284.54	1,114.14	7.31	3.72	
7,771.00	46.36	310.53	6,916.05	-367.63	-3,311.55	1,144.78	9.88	4.40	
7,818.00	47.07	315.80	6,948.29	-344.23	-3,336.48	1,176.83	8.30	1.51	
7,865.00	49.18	320.90	6,979.67	-318.09	-3,359.71	1,210.58	9.24	4.49	
7,912.00	51.72	326.52	7,009.61	-288.88	-3,381.11	1,246.26	10.68	5.40	
7,959.00	53.92	330.65	7,038.02	-256.93	-3,400.61	1,283.55	8.42	4.68	
8,006.00	55.37	334.34	7,065.22	-222.93	-3,418.29	1,321.87	7.11	3.09	
8,054.00	56.82	336.72	7,092.00	-186.67	-3,434.79	1,361.68	5.10	3.02	
8,070.15	57.38	337.54	7,100.77	-174.18	-3,440.06	1,375.21	5.49	3.44	TPZ - 8070.15 (2177 FNL, 395 FWL)
8,101.00	58.45	339.09	7,117.16	-149.89	-3,449.71	1,401.25	5.49	3.48	
8,148.00	58.67	343.75	7,141.69	-111.90	-3,462.48	1,440.96	8.47	0.47	
8,195.00	57.92	347.88	7,166.39	-73.15	-3,472.28	1,480.03	7.64	-1.60	
8,242.00	59.06	348.32	7,190.96	-33.94	-3,480.54	1,518.81	2.55	2.43	
8,289.00	60.29	349.90	7,214.69	5.90	-3,488.20	1,557.90	3.91	2.62	
8,337.00	62.14	352.54	7,237.81	47.47	-3,494.61	1,597.97	6.17	3.85	
8,384.00	65.44	354.65	7,258.56	89.36	-3,499.31	1,637.58	8.09	7.02	
8,432.00	69.61	356.93	7,276.91	133.59	-3,502.55	1,678.62	9.73	8.69	
8,479.00	74.36	359.75	7,291.44	178.25	-3,503.83	1,719.18	11.60	10.11	
8,526.00	78.53	1.68	7,302.46	223.92	-3,503.25	1,759.83	9.73	8.87	
8,573.00	81.91	3.61	7,310.44	270.18	-3,501.11	1,800.30	8.25	7.19	
8,621.00	87.45	5.99	7,314.89	317.78	-3,497.11	1,841.14	12.55	11.54	
8,668.00	92.59	8.18	7,314.87	364.41	-3,491.31	1,880.32	11.89	10.94	
8,715.00	93.03	7.30	7,312.57	410.92	-3,484.99	1,919.15	2.09	0.94	
8,809.00	91.41	4.14	7,308.93	504.37	-3,475.63	1,998.67	3.78	-1.72	
8,904.00	90.97	4.40	7,306.96	599.08	-3,468.56	2,080.34	0.54	-0.46	
8,998.00	90.13	0.71	7,306.05	692.97	-3,464.37	2,162.54	4.03	-0.89	
9,093.00	91.27	1.06	7,304.89	787.95	-3,462.90	2,246.94	1.26	1.20	
9,187.00	91.27	1.24	7,302.81	881.91	-3,461.02	2,330.24	0.19	0.00	
9,282.00	91.01	0.71	7,300.92	976.87	-3,459.40	2,414.56	0.62	-0.27	
9,376.00	91.93	0.62	7,298.51	1,070.83	-3,458.31	2,498.22	0.98	0.98	
9,471.00	91.63	359.75	7,295.56	1,165.79	-3,458.01	2,583.11	0.97	-0.32	

Cathedral Energy Services

Survey Report

Company:	Crestone Peak Resources	Local Co-ordinate Reference:	Well DAVIS 1N-9H-G266 - Slot DAVIS 1N-9H
Project:	DJ BASIN	TVD Reference:	23' KB @ 4940.00usft
Site:	S4-T2N-R66W	MD Reference:	23' KB @ 4940.00usft
Well:	DAVIS 1N-9H-G266	North Reference:	True
Wellbore:	OH	Survey Calculation Method:	Minimum Curvature
Design:	FINAL	Database:	USA EDM 5000 Multi Users DB

Survey									
Measured Depth (usft)	Inclination (°)	Azimuth (°)	Vertical Depth (usft)	+N/-S (usft)	+E/-W (usft)	Vertical Section (usft)	Dogleg Rate (°/100usf)	Build Rate (°/100u)	Formations / Comments
9,566.00	91.06	2.65	7,293.33	1,260.73	-3,456.02	2,667.24	3.11	-0.60	
9,660.00	90.35	4.40	7,292.17	1,354.54	-3,450.24	2,748.68	2.01	-0.76	
9,755.00	88.81	3.00	7,292.87	1,449.33	-3,444.11	2,830.83	2.19	-1.62	
9,849.00	89.25	0.18	7,294.46	1,543.28	-3,441.50	2,913.80	3.04	0.47	
9,943.00	90.35	359.57	7,294.79	1,637.27	-3,441.70	2,998.06	1.34	1.17	
10,037.00	90.44	359.13	7,294.14	1,731.26	-3,442.77	3,082.70	0.48	0.10	
10,131.00	92.33	359.13	7,291.87	1,825.22	-3,444.20	3,167.47	2.01	2.01	
10,227.00	91.80	358.51	7,288.41	1,921.14	-3,446.17	3,254.24	0.85	-0.55	
10,321.00	92.29	359.13	7,285.05	2,015.06	-3,448.11	3,339.21	0.84	0.52	
10,416.00	91.58	359.04	7,281.84	2,109.99	-3,449.62	3,424.89	0.75	-0.75	
10,510.00	92.46	0.10	7,278.53	2,203.93	-3,450.33	3,509.33	1.47	0.94	
10,604.00	91.63	359.66	7,275.18	2,297.87	-3,450.53	3,593.53	1.00	-0.88	
10,699.00	91.63	1.59	7,272.47	2,392.82	-3,449.49	3,678.10	2.03	0.00	
10,793.00	91.58	1.68	7,269.84	2,486.74	-3,446.81	3,761.01	0.11	-0.05	
10,887.00	91.36	0.80	7,267.43	2,580.69	-3,444.78	3,844.24	0.96	-0.23	
10,982.00	90.97	1.77	7,265.50	2,675.64	-3,442.65	3,928.32	1.10	-0.41	
11,076.00	90.57	1.42	7,264.23	2,769.60	-3,440.03	4,011.29	0.57	-0.43	
11,171.00	90.40	0.71	7,263.43	2,864.58	-3,438.26	4,095.55	0.77	-0.18	
11,265.00	89.78	3.17	7,263.28	2,958.52	-3,435.08	4,178.26	2.70	-0.66	
11,360.00	89.43	2.47	7,263.94	3,053.40	-3,430.41	4,261.14	0.82	-0.37	
11,454.00	89.17	2.47	7,265.09	3,147.30	-3,426.36	4,343.43	0.28	-0.28	
11,548.00	88.37	1.68	7,267.10	3,241.22	-3,422.96	4,426.01	1.20	-0.85	
11,643.00	87.94	1.59	7,270.16	3,336.13	-3,420.25	4,509.80	0.46	-0.45	
11,737.00	88.81	1.68	7,272.83	3,430.05	-3,417.57	4,592.71	0.93	0.93	
11,831.00	89.39	2.73	7,274.30	3,523.97	-3,413.95	4,675.20	1.28	0.62	
11,925.00	89.91	1.77	7,274.88	3,617.90	-3,410.26	4,757.67	1.16	0.55	
12,019.00	90.18	0.54	7,274.80	3,711.87	-3,408.36	4,840.98	1.34	0.29	
12,114.00	89.91	0.71	7,274.73	3,806.87	-3,407.33	4,925.59	0.34	-0.28	
12,208.00	90.57	358.95	7,274.34	3,900.86	-3,407.61	5,009.88	2.00	0.70	
12,302.00	90.48	358.69	7,273.48	3,994.84	-3,409.54	5,094.90	0.29	-0.10	
12,396.00	90.26	359.04	7,272.87	4,088.82	-3,411.40	5,179.88	0.44	-0.23	
12,490.00	90.09	359.66	7,272.58	4,182.81	-3,412.47	5,264.52	0.68	-0.18	
12,585.00	89.74	358.51	7,272.72	4,277.80	-3,413.99	5,350.26	1.27	-0.37	
12,680.00	90.57	0.18	7,272.47	4,372.79	-3,415.07	5,435.80	1.96	0.87	
12,774.00	89.74	359.83	7,272.21	4,466.79	-3,415.07	5,519.97	0.96	-0.88	
12,869.00	90.62	1.15	7,271.91	4,561.78	-3,414.25	5,604.67	1.67	0.93	
12,963.00	90.31	0.71	7,271.15	4,655.76	-3,412.73	5,688.16	0.57	-0.33	
13,058.00	89.69	0.45	7,271.15	4,750.76	-3,411.77	5,772.79	0.71	-0.65	
13,152.00	90.44	0.98	7,271.04	4,844.75	-3,410.59	5,856.44	0.98	0.80	
13,247.00	91.27	1.94	7,269.63	4,939.71	-3,408.17	5,940.39	1.34	0.87	
13,341.00	90.66	0.54	7,268.04	5,033.67	-3,406.14	6,023.63	1.62	-0.65	
13,435.00	89.82	2.29	7,267.65	5,127.63	-3,403.82	6,106.74	2.07	-0.89	
13,530.00	90.75	2.91	7,267.18	5,222.53	-3,399.51	6,189.80	1.18	0.98	
13,624.00	90.22	1.77	7,266.38	5,316.45	-3,395.67	6,272.19	1.34	-0.56	
13,719.00	91.45	1.85	7,265.00	5,411.39	-3,392.67	6,355.88	1.30	1.29	
13,813.00	90.97	1.68	7,263.01	5,505.32	-3,389.78	6,438.70	0.54	-0.51	
13,907.00	90.53	1.06	7,261.78	5,599.29	-3,387.53	6,521.85	0.81	-0.47	
14,002.00	89.47	1.42	7,261.78	5,694.26	-3,385.47	6,605.98	1.18	-1.12	
14,097.00	89.30	1.59	7,262.80	5,789.23	-3,382.98	6,689.91	0.25	-0.18	
14,191.00	90.22	1.33	7,263.19	5,883.19	-3,380.58	6,772.99	1.02	0.98	
14,286.00	91.23	2.47	7,261.99	5,978.13	-3,377.43	6,856.60	1.60	1.06	
14,381.00	90.40	1.77	7,260.64	6,073.06	-3,373.92	6,940.04	1.14	-0.87	
14,474.00	89.82	0.98	7,260.46	6,166.03	-3,371.69	7,022.30	1.05	-0.62	

Cathedral Energy Services

Survey Report

Company:	Crestone Peak Resources	Local Co-ordinate Reference:	Well DAVIS 1N-9H-G266 - Slot DAVIS 1N-9H
Project:	DJ BASIN	TVD Reference:	23' KB @ 4940.00usft
Site:	S4-T2N-R66W	MD Reference:	23' KB @ 4940.00usft
Well:	DAVIS 1N-9H-G266	North Reference:	True
Wellbore:	OH	Survey Calculation Method:	Minimum Curvature
Design:	FINAL	Database:	USA EDM 5000 Multi Users DB

Survey									
Measured Depth (usft)	Inclination (°)	Azimuth (°)	Vertical Depth (usft)	+N/-S (usft)	+E/-W (usft)	Vertical Section (usft)	Dogleg Rate (°/100usf)	Build Rate (°/100u)	Formations / Comments
14,569.00	89.43	1.24	7,261.08	6,261.01	-3,369.85	7,106.53	0.49	-0.41	
14,663.00	88.64	1.42	7,262.67	6,354.97	-3,367.67	7,189.70	0.86	-0.84	
14,758.00	90.13	1.15	7,263.69	6,449.94	-3,365.54	7,273.79	1.59	1.57	
14,852.00	89.34	0.89	7,264.12	6,543.92	-3,363.86	7,357.21	0.88	-0.84	
14,947.00	88.77	0.45	7,265.69	6,638.90	-3,362.75	7,441.77	0.76	-0.60	
15,015.00	88.24	359.83	7,267.46	6,706.87	-3,362.59	7,502.57	1.20	-0.78	LAST SURVEY - 15015.00' MD
15,075.00	88.24	359.83	7,269.30	6,766.85	-3,362.76	7,556.35	0.00	0.00	PTB - 15075.00' MD (465 FNL, 457 FWL)

Targets									
Target Name	Dip Angle (°)	Dip Dir. (°)	TVD (usft)	+N/-S (usft)	+E/-W (usft)	Northing (usft)	Easting (usft)	Latitude	Longitude
DAVIS 1N-9H-G266 BHI - hit/miss target - Shape	0.00	0.00	7,265.00	6,772.14	-3,366.83	1,306,637.21	3,198,399.10	40.172934	-104.790012
- actual wellpath misses target center by 7.94usft at 15075.00usft MD (7269.30 TVD, 6766.85 N, -3362.76 E)									
- Point									
DAVIS 1N-9H-G266 TPZ - hit/miss target - Shape	0.00	0.00	7,301.00	-174.18	-3,421.84	1,299,690.68	3,198,400.65	40.153866	-104.790206
- actual wellpath misses target center by 174.31usft at 8171.94usft MD (7154.20 TVD, -92.21 N, -3467.83 E)									
- Point									
DAVIS 1N 2184' N - hit/miss target - Shape	0.00	0.00	7,274.00	2,184.00	-3,446.91	1,302,048.57	3,198,356.38	40.160339	-104.790297
- actual wellpath misses target center by 6.35usft at 10490.22usft MD (7279.35 TVD, 2184.16 N, -3450.33 E)									
- Point									
DAVIS 1N 4639' N - hit/miss target - Shape	0.00	0.00	7,265.00	4,369.00	-3,408.77	1,304,233.81	3,198,376.72	40.166337	-104.790161
- actual wellpath misses target center by 9.80usft at 12676.16usft MD (7272.50 TVD, 4368.95 N, -3415.08 E)									
- Point									

Design Annotations					
Measured Depth (usft)	Vertical Depth (usft)	Local Coordinates			
		+N/-S (usft)	+E/-W (usft)	Comment	
8,070.15	7,100.77	-174.18	-3,440.06	TPZ - 8070.15 (2177 FNL, 395 FWL)	
15,015.00	7,267.46	6,706.87	-3,362.59	LAST SURVEY - 15015.00' MD	
15,075.00	7,269.30	6,766.85	-3,362.76	PTB - 15075.00' MD (465 FNL, 457 FWL)	

Checked By: _____ Approved By: _____ Date: _____