



CRESTONE PEAK
RESOURCES

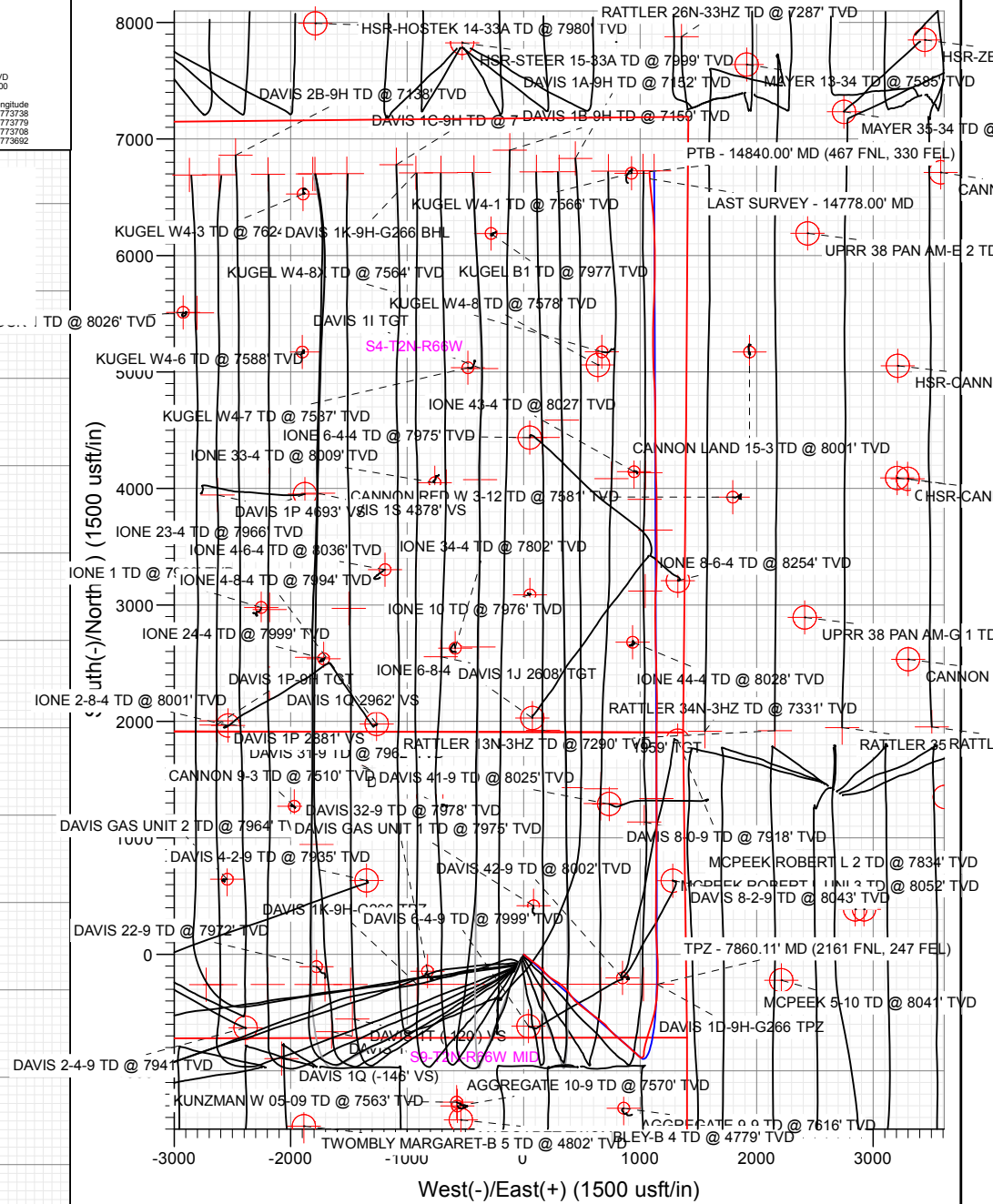
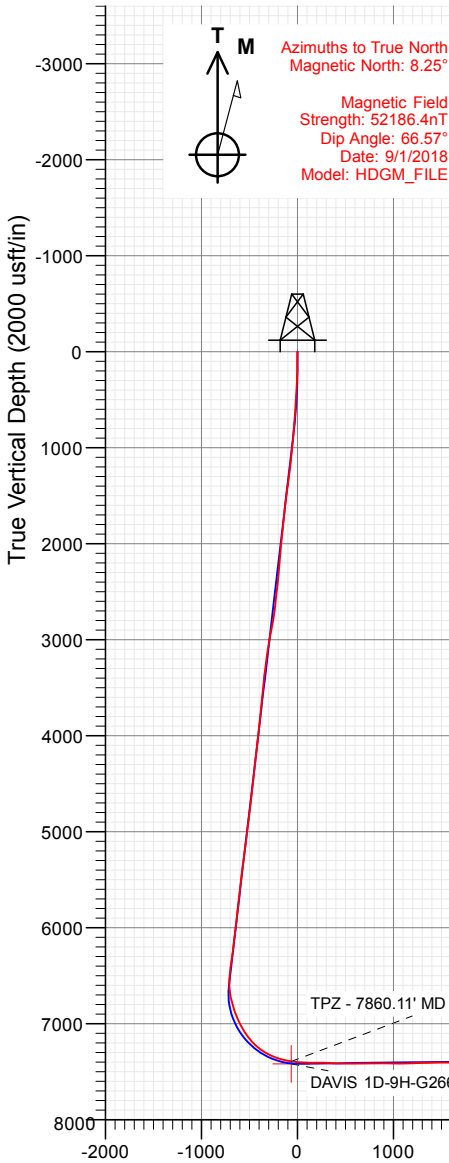
SECTION DETAILS

Sec	MD	Inc	Azi	TVD	+N/-S	+E/-W	Dleg	TFace	Vsect	Target
1	0.00	0.00	0.00	0.00	0.00	0.00	0.00	0.00	0.00	
2	200.00	0.00	0.00	200.00	0.00	0.00	0.00	0.00	0.00	
3	823.09	12.46	131.38	818.19	-44.62	50.64	2.00	131.38	-35.70	
4	6755.19	12.46	131.38	6610.53	-890.89	1011.07	0.00	0.00	-712.77	
5	7992.37	90.76	359.83	7417.91	-172.36	1144.35	8.00	-130.75	17.89	
6	9501.87	90.76	359.83	7398.00	1337.00	1139.99	0.00	0.00	1506.05	DAVIS 1D 1337' TGT
7	9528.71	90.22	359.79	7397.77	1363.84	1139.90	2.00	-174.83	1532.51	
8	11796.85	90.22	359.79	7389.02	3631.95	1131.42	0.00	0.00	3768.44	
9	11807.90	90.00	359.79	7389.00	3643.00	1131.38	2.00	179.93	3779.33	DAVIS 1D 3643' TGT
10	14892.07	90.00	359.79	7389.00	6727.15	1119.88	0.00	0.00	6819.72	DAVIS 1D-9H-G266 BHL

FINAL
DAVIS 1D-9H-G266
388537 185151 414237 185260
23 KB @ 4840.00usft
Ground Level @ 4917.00
North American Datum 1983
Well DAVIS 1D-9H-G266 - Slot DAVIS 1D-9H, True North

Type	Target	No Target (Freehand)	Azimuth	Origin Type	N/S	E/W	From TVD
Name	TVD	+N/-S	+E/-W	Latitude	Longitude		
DAVIS 1D 3643' TGT	7389.00	3643.00	1131.38	40.164583	-104.773738		
DAVIS 1D-9H-G266 BHL	7389.00	6727.15	1119.88	40.173050	-104.773770		
DAVIS 1D 1337' TGT	7398.00	1337.00	1139.99	40.158253	-104.773708		
DAVIS 1D-9H-G266 TPZ	7419.00	-255.25	1144.59	40.153882	-104.773692		

Project: DJ BASIN
Site: S4-T2N-R66W
Well: DAVIS 1D-9H-G266
Wellbore: OH
Design: FINAL



Vertical Section at 9.45° (2000 usft/in)

WELL DETAILS: DAVIS 1D-9H-G266

+N/-S	+E/-W	Northing	Easting	Latitude	Longitude	
0.00	0.00	1299979.94	3201869.86	40.154583	-104.777786	DAVIS 1D-9H

CATHEDRAL





CRESTONE PEAK
RESOURCES

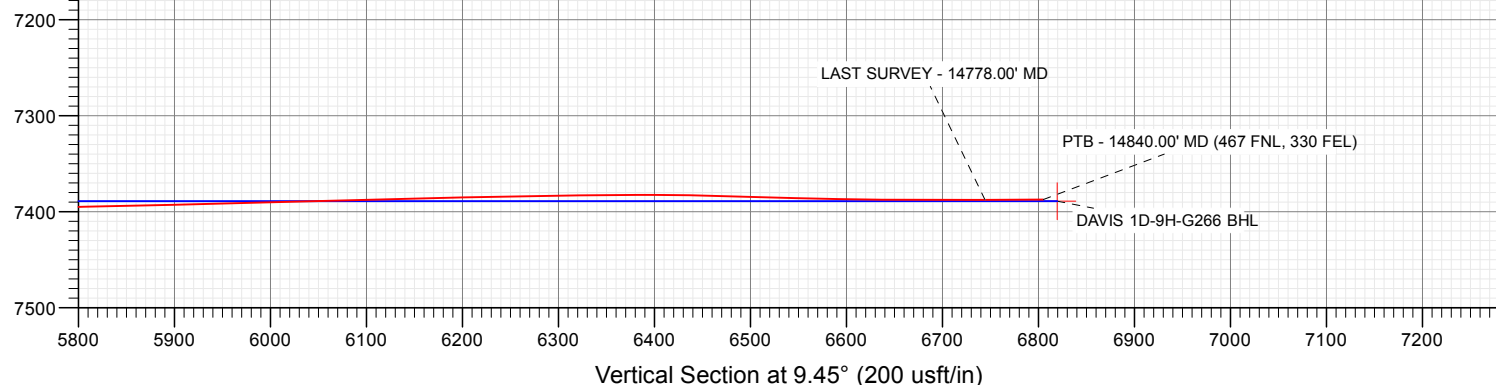
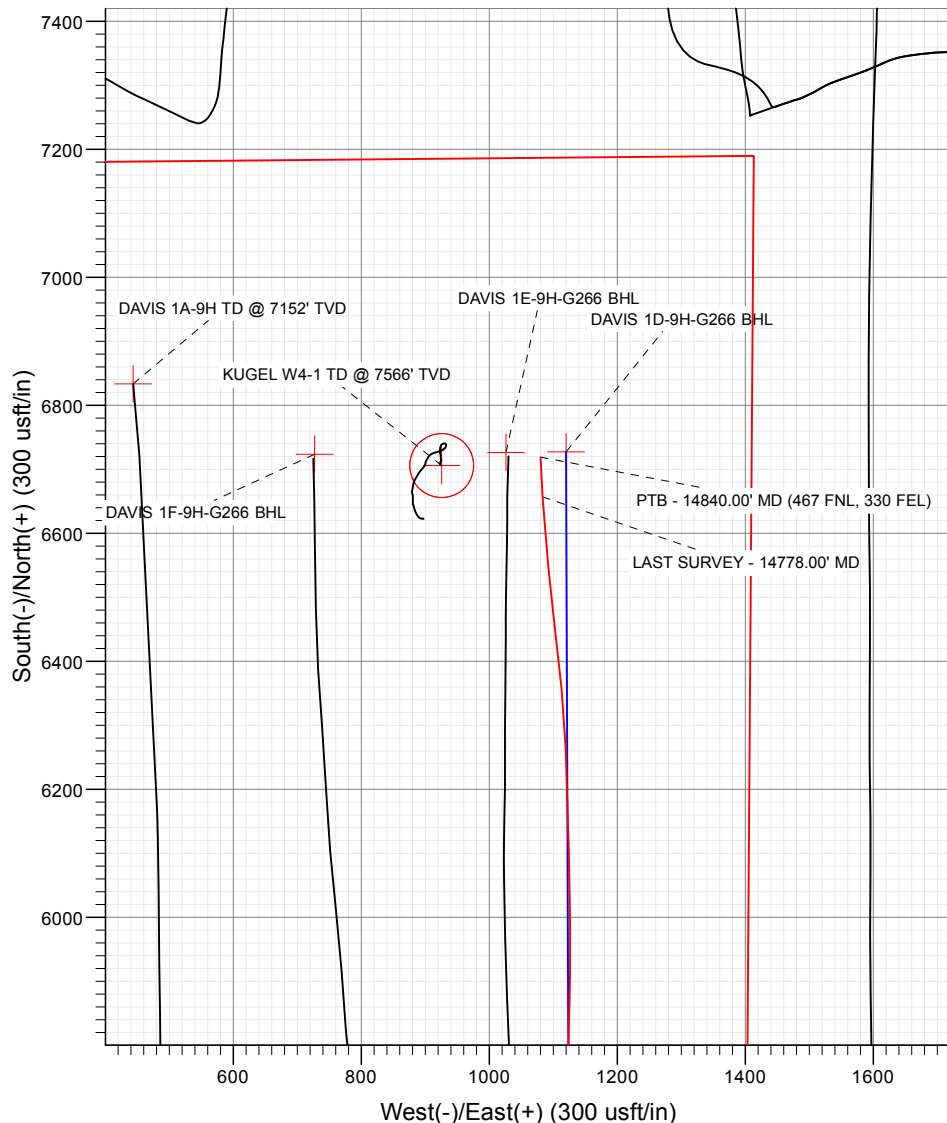
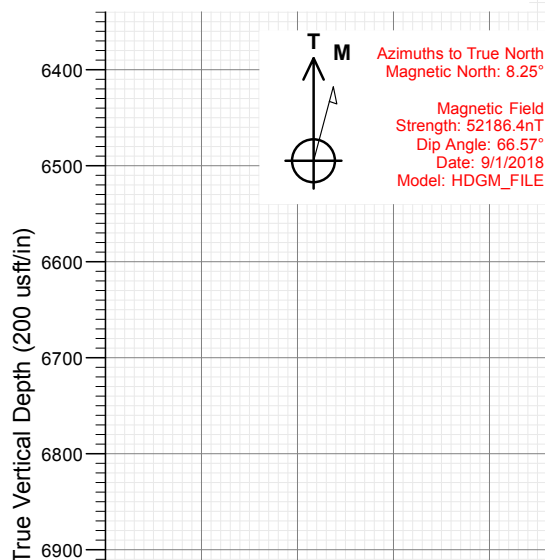
SECTION DETAILS

Sec	MD	Inc	Azi	TVD	+N/-S	+E/-W	Dleg	TFace	VSect	Target
1	0.00	0.00	0.00	0.00	0.00	0.00	0.00	0.00	0.00	
2	200.00	0.00	0.00	200.00	0.00	0.00	0.00	0.00	0.00	
3	823.09	12.46	131.38	818.19	-44.62	50.64	2.00	131.38	-35.70	
4	6755.19	12.46	131.38	6610.53	-890.89	1011.07	0.00	0.00	-712.77	
5	7992.37	90.76	359.83	7417.91	-172.36	1144.35	8.00	-130.75	17.89	
6	9501.87	90.76	359.83	7398.00	1337.00	1139.99	0.00	0.00	1506.05	DAVIS 1D 1337' TGT
7	9528.71	90.22	359.79	7397.77	1363.84	1139.90	2.00	-174.83	1532.51	
8	11796.85	90.22	359.79	7389.02	3631.95	1131.42	0.00	0.00	3768.44	
9	11807.90	90.00	359.79	7389.00	3643.00	1131.38	2.00	179.93	3779.33	DAVIS 1D 3643' TGT
10	14892.07	90.00	359.79	7389.00	6727.15	1119.88	0.00	0.00	6819.72	DAVIS 1D-9H-G266 BHL

FINAL
DAVIS 1D-9H-G266
388537 185151 414237 185260
23 KB @ 4940.00usft
Ground Level @ 4917.00
North American Datum 1983
Well DAVIS 1D-9H-G266 - Slot DAVIS 1D-9H, True North

Type	Target	Target	Target	Target	Target	Target	Target	Target	Target	Target
User	No Target	(Freehand)	Azimuth	Origin	Type	N/S	E/W	From	TVD	From
Name	TVD	+N/-S	+E/-W	Latitude	Longitude					
DAVIS 1D 3643' TGT	7389.00	3643.00	1131.38	40.164583	-104.773738					
DAVIS 1D-9H-G266 BHL	7389.00	6727.15	1119.88	40.173050	-104.773770					
DAVIS 1D 1337' TGT	7398.00	1337.00	1139.99	40.158253	-104.773708					
DAVIS 1D-9H-G266 TPZ	7419.00	-255.25	1144.59	40.153882	-104.773692					

Project: DJ BASIN
Site: S4-T2N-R66W
Well: DAVIS 1D-9H-G266
Wellbore: OH
Design: FINAL



WELL DETAILS: DAVIS 1D-9H-G266

4917.00
+N/-S 0.00 +E/-W 0.00 Northing 1299979.94 Easting 3201869.86 Latitude 40.154583 Longitude -104.777786 DAVIS 1D-9H

CATHEDRAL



Survey Report

Company:	Crestone Peak Resources	Local Co-ordinate Reference:	Well DAVIS 1D-9H-G266 - Slot DAVIS 1D-9H
Project:	DJ BASIN	TVD Reference:	23' KB @ 4940.00usft
Site:	S4-T2N-R66W	MD Reference:	23' KB @ 4940.00usft
Well:	DAVIS 1D-9H-G266	North Reference:	True
Wellbore:	OH	Survey Calculation Method:	Minimum Curvature
Design:	FINAL	Database:	USA EDM 5000 Multi Users DB

Project	DJ BASIN		
Map System:	US State Plane 1983	System Datum:	Mean Sea Level
Geo Datum:	North American Datum 1983		
Map Zone:	Colorado Northern Zone		

Site		S4-T2N-R66W			
Site Position:		Northing:	1,300,048.95 usft	Latitude:	40.154783
From:	Map	Easting:	3,201,389.75 usft	Longitude:	-104.779502
Position Uncertainty:	0.00 usft	Slot Radius:	13-3/16 "	Grid Convergence:	0.47 °

Well	DAVIS 1D-9H-G266 - Slot DAVIS 1D-9H					
Well Position	+N/-S	0.00 usft	Northing:	1,299,979.94 usft	Latitude:	40.154583
	+E/-W	0.00 usft	Easting:	3,201,869.86 usft	Longitude:	-104.777786
Position Uncertainty		0.00 usft	Wellhead Elevation:	usft	Ground Level:	4,917.00 usft

Wellbore	OH				
Magnetics	Model Name	Sample Date	Declination (°)	Dip Angle (°)	Field Strength (nT)
	HDGM_FILE	9/1/2018	8.25	66.57	52,186.40000000

Design	FINAL				
Audit Notes:					
Version:	1.0	Phase:	ACTUAL	Tie On Depth:	0.00
Vertical Section:	Depth From (TVD) (usft)	+N/-S (usft)	+E/-W (usft)	Direction (°)	
	0.00	0.00	0.00	9.45	

Survey Program	Date	9/6/2018			
From (usft)	To (usft)	Survey (Wellbore)	Tool Name	Description	
136.00	2,125.00	Survey #1 (OH)	VESSI_GYROFLEX	VESSI Gyroflex Gyro	
2,272.00	14,840.00	Survey #2 (OH)	MWD+HDGM	OWSG MWD + HDGM	

Survey									
Measured Depth (usft)	Inclination (°)	Azimuth (°)	Vertical Depth (usft)	+N/-S (usft)	+E/-W (usft)	Vertical Section (usft)	Dogleg Rate (°/100usf)	Build Rate (°/100u)	Formations / Comments
0.00	0.00	0.00	0.00	0.00	0.00	0.00	0.00	0.00	
136.00	0.64	137.09	136.00	-0.56	0.52	-0.46	0.47	0.47	
168.00	0.99	124.16	167.99	-0.84	0.87	-0.69	1.23	1.09	
199.00	1.91	134.27	198.98	-1.35	1.46	-1.10	3.07	2.97	
231.00	2.55	124.69	230.96	-2.13	2.43	-1.70	2.31	2.00	
325.00	4.81	125.13	324.76	-5.59	7.37	-4.30	2.40	2.40	
420.00	6.72	134.27	419.28	-11.76	14.61	-9.20	2.22	2.01	
514.00	7.90	127.59	512.51	-19.54	23.67	-15.39	1.55	1.26	
609.00	8.60	122.93	606.53	-27.39	34.80	-21.30	1.02	0.74	
704.00	9.75	132.43	700.32	-36.68	46.70	-28.51	2.00	1.21	
798.00	7.98	132.60	793.19	-46.46	57.38	-36.41	1.88	-1.88	
895.00	9.54	123.02	889.06	-55.40	69.08	-43.31	2.20	1.61	

Survey Report

Company:	Crestone Peak Resources	Local Co-ordinate Reference:	Well DAVIS 1D-9H-G266 - Slot DAVIS 1D-9H
Project:	DJ BASIN	TVD Reference:	23' KB @ 4940.00usft
Site:	S4-T2N-R66W	MD Reference:	23' KB @ 4940.00usft
Well:	DAVIS 1D-9H-G266	North Reference:	True
Wellbore:	OH	Survey Calculation Method:	Minimum Curvature
Design:	FINAL	Database:	USA EDM 5000 Multi Users DB

Survey									
Measured Depth (usft)	Inclination (°)	Azimuth (°)	Vertical Depth (usft)	+N/-S (usft)	+E/-W (usft)	Vertical Section (usft)	Dogleg Rate (°/100usf)	Build Rate (°/100u)	Formations / Comments
987.00	10.83	127.42	979.61	-64.81	82.33	-50.41	1.64	1.40	
1,055.00	12.36	129.30	1,046.22	-73.30	93.04	-57.03	2.32	2.25	
1,149.00	13.76	125.97	1,137.79	-86.24	109.87	-67.03	1.69	1.49	
1,244.00	14.83	129.29	1,229.85	-100.58	128.43	-78.12	1.42	1.13	
1,339.00	13.96	133.17	1,321.87	-116.11	146.20	-90.54	1.37	-0.92	
1,433.00	11.38	140.50	1,413.58	-131.03	160.37	-102.92	3.23	-2.74	
1,527.00	10.53	138.29	1,505.86	-144.60	171.98	-114.40	1.01	-0.90	
1,622.00	10.92	138.78	1,599.20	-157.85	183.69	-125.55	0.42	0.41	
1,716.00	11.08	138.89	1,691.48	-171.35	195.49	-136.93	0.17	0.17	
1,810.00	10.77	131.56	1,783.78	-183.98	208.00	-147.34	1.51	-0.33	
1,904.00	11.91	124.34	1,875.95	-195.28	222.59	-156.09	1.93	1.21	
1,999.00	13.00	123.94	1,968.71	-206.78	239.55	-164.64	1.15	1.15	
2,093.00	13.31	123.61	2,060.24	-218.67	257.33	-173.45	0.34	0.33	
2,125.00	13.30	123.93	2,091.38	-222.76	263.45	-176.49	0.23	-0.03	
2,272.00	12.52	118.55	2,234.67	-239.82	291.48	-188.71	0.97	-0.53	
2,366.00	12.48	124.97	2,326.45	-250.51	308.75	-196.42	1.48	-0.04	
2,461.00	12.09	130.51	2,419.28	-262.86	324.73	-205.97	1.31	-0.41	
2,555.00	11.29	134.02	2,511.33	-275.65	338.83	-216.27	1.14	-0.85	
2,649.00	11.25	131.47	2,603.51	-288.11	352.32	-226.36	0.53	-0.04	
2,743.00	12.57	135.87	2,695.49	-301.53	366.31	-237.29	1.70	1.40	
2,838.00	13.32	142.46	2,788.08	-317.62	380.18	-250.89	1.74	0.79	
2,932.00	15.07	144.48	2,879.21	-336.16	393.88	-266.93	1.93	1.86	
3,027.00	14.50	145.71	2,971.06	-356.04	407.75	-284.26	0.68	-0.60	
3,121.00	13.58	142.55	3,062.25	-374.52	421.09	-300.30	1.27	-0.98	
3,215.00	13.05	138.77	3,153.73	-391.26	434.80	-314.57	1.08	-0.56	
3,310.00	13.84	133.93	3,246.13	-407.21	450.05	-327.80	1.45	0.83	
3,404.00	14.06	127.25	3,337.36	-421.93	467.24	-339.49	1.73	0.23	
3,499.00	11.95	125.94	3,429.92	-434.69	484.39	-349.26	2.24	-2.22	
3,594.00	11.43	131.03	3,522.95	-446.64	499.45	-358.57	1.22	-0.55	
3,688.00	11.73	129.10	3,615.04	-458.78	513.89	-368.18	0.52	0.32	
3,783.00	11.91	122.95	3,708.03	-470.20	529.61	-376.86	1.34	0.19	
3,877.00	11.65	131.82	3,800.05	-481.81	544.83	-385.81	1.94	-0.28	
3,972.00	12.35	134.81	3,892.98	-495.36	559.18	-396.83	0.99	0.74	
4,066.00	13.01	124.18	3,984.70	-508.39	575.07	-407.07	2.58	0.70	
4,161.00	14.90	126.11	4,076.89	-521.60	593.79	-417.03	2.05	1.99	
4,255.00	14.02	126.46	4,167.91	-535.49	612.71	-427.62	0.94	-0.94	
4,371.00	11.87	123.74	4,280.96	-550.47	633.93	-438.91	1.93	-1.85	
4,466.00	12.22	127.43	4,373.87	-562.00	650.04	-447.65	0.89	0.37	
4,560.00	13.80	132.26	4,465.46	-575.59	666.24	-458.39	2.04	1.68	
4,655.00	11.25	125.67	4,558.19	-588.62	682.16	-468.63	3.07	-2.68	
4,749.00	12.00	132.97	4,650.27	-600.63	696.76	-478.08	1.75	0.80	
4,843.00	12.88	142.28	4,742.07	-615.58	710.32	-490.60	2.33	0.94	
4,938.00	11.69	140.88	4,834.89	-631.42	722.87	-504.16	1.29	-1.25	
5,032.00	10.06	138.59	4,927.20	-644.96	734.31	-515.65	1.79	-1.73	
5,126.00	10.77	134.20	5,019.65	-657.25	746.04	-525.84	1.13	0.76	
5,221.00	12.48	134.11	5,112.70	-670.58	759.77	-536.73	1.80	1.80	
5,316.00	13.27	133.06	5,205.31	-685.17	775.11	-548.61	0.87	0.83	
5,410.00	13.49	133.67	5,296.76	-700.10	790.92	-560.75	0.28	0.23	
5,505.00	12.92	127.87	5,389.25	-714.28	807.32	-572.03	1.52	-0.60	
5,599.00	14.46	132.18	5,480.58	-728.61	824.31	-583.38	1.96	1.64	
5,694.00	12.09	130.51	5,573.04	-743.04	840.67	-594.93	2.53	-2.49	
5,789.00	11.69	132.88	5,666.00	-756.05	855.29	-605.36	0.66	-0.42	
5,883.00	13.10	125.58	5,757.81	-768.73	870.93	-615.30	2.24	1.50	

Survey Report

Company:	Crestone Peak Resources	Local Co-ordinate Reference:	Well DAVIS 1D-9H-G266 - Slot DAVIS 1D-9H
Project:	DJ BASIN	TVD Reference:	23' KB @ 4940.00usft
Site:	S4-T2N-R66W	MD Reference:	23' KB @ 4940.00usft
Well:	DAVIS 1D-9H-G266	North Reference:	True
Wellbore:	OH	Survey Calculation Method:	Minimum Curvature
Design:	FINAL	Database:	USA EDM 5000 Multi Users DB

Survey									
Measured Depth (usft)	Inclination (°)	Azimuth (°)	Vertical Depth (usft)	+N/-S (usft)	+E/-W (usft)	Vertical Section (usft)	Dogleg Rate (°/100usf)	Build Rate (°/100u)	Formations / Comments
5,978.00	13.01	128.66	5,850.36	-781.67	888.04	-625.26	0.74	-0.09	
6,072.00	12.26	132.09	5,942.08	-794.97	903.71	-635.81	1.13	-0.80	
6,167.00	12.79	134.90	6,034.82	-809.16	918.64	-647.35	0.85	0.56	
6,262.00	13.14	134.46	6,127.40	-824.14	933.80	-659.64	0.38	0.37	
6,356.00	13.10	129.80	6,218.95	-838.45	949.61	-671.15	1.13	-0.04	
6,450.00	12.13	132.00	6,310.68	-851.87	965.13	-681.85	1.15	-1.03	
6,545.00	12.22	136.57	6,403.54	-865.85	979.46	-693.29	1.02	0.09	
6,640.00	12.74	129.28	6,496.31	-879.79	994.48	-704.57	1.74	0.55	
6,734.00	8.97	97.72	6,588.69	-887.34	1,009.78	-709.51	7.34	-4.01	
6,781.00	10.55	65.56	6,635.04	-886.05	1,017.34	-707.00	11.90	3.36	
6,829.00	10.37	43.14	6,682.26	-881.08	1,024.30	-700.95	8.44	-0.37	
6,876.00	12.52	21.26	6,728.34	-873.24	1,029.04	-692.44	10.22	4.57	
6,923.00	14.77	6.67	6,774.03	-862.54	1,031.58	-681.46	8.71	4.79	
6,970.00	16.70	2.36	6,819.27	-849.84	1,032.56	-668.78	4.80	4.11	
7,017.00	18.15	3.86	6,864.11	-835.79	1,033.33	-654.79	3.23	3.09	
7,064.00	20.83	6.67	6,908.41	-820.18	1,034.79	-639.15	6.04	5.70	
7,112.00	23.25	10.27	6,952.90	-802.38	1,037.47	-621.15	5.77	5.04	
7,159.00	26.32	14.75	6,995.57	-783.17	1,041.78	-601.50	7.65	6.53	
7,206.00	29.09	14.31	7,037.18	-762.02	1,047.26	-579.73	5.91	5.89	
7,253.00	32.92	14.67	7,077.46	-738.58	1,053.32	-555.62	8.16	8.15	
7,301.00	37.00	17.39	7,116.79	-712.17	1,060.94	-528.31	9.10	8.50	
7,348.00	38.23	18.09	7,154.02	-684.85	1,069.69	-499.93	2.77	2.62	
7,396.00	42.10	17.22	7,190.69	-655.35	1,079.06	-469.29	8.15	8.06	
7,443.00	47.37	16.34	7,224.07	-623.69	1,088.60	-436.49	11.29	11.21	
7,490.00	51.81	17.39	7,254.53	-589.45	1,098.99	-401.01	9.60	9.45	
7,537.00	56.38	16.25	7,282.09	-553.02	1,109.99	-363.27	9.92	9.72	
7,585.00	60.56	12.56	7,307.19	-513.40	1,120.14	-322.53	10.90	8.71	
7,632.00	65.83	9.57	7,328.38	-472.25	1,128.16	-280.61	12.57	11.21	
7,679.00	69.65	6.84	7,346.18	-429.21	1,134.35	-237.14	9.74	8.13	
7,726.00	73.61	5.70	7,360.99	-384.88	1,139.22	-192.61	8.73	8.43	
7,774.00	74.09	4.38	7,374.35	-338.95	1,143.26	-146.65	2.82	1.00	
7,821.00	77.17	3.59	7,386.01	-293.54	1,146.43	-101.33	6.75	6.55	
7,860.11	80.50	3.30	7,393.58	-255.25	1,148.73	-63.18	8.54	8.51	TPZ - 7860.11' MD (2161 FNL, 247 FEL)
7,868.00	81.17	3.24	7,394.84	-247.47	1,149.17	-55.43	8.54	8.51	
7,915.00	84.68	1.22	7,400.63	-200.87	1,150.99	-9.17	8.60	7.47	
7,963.00	87.10	1.04	7,404.07	-153.01	1,151.93	38.20	5.06	5.04	
8,058.00	90.66	357.53	7,405.92	-58.06	1,150.74	131.66	5.26	3.75	
8,152.00	89.08	355.86	7,406.14	35.77	1,145.32	223.33	2.45	-1.68	
8,246.00	87.58	356.91	7,408.88	129.54	1,139.40	314.86	1.95	-1.60	
8,340.00	87.32	358.14	7,413.06	223.36	1,135.34	406.74	1.34	-0.28	
8,435.00	90.26	0.87	7,415.06	318.32	1,134.53	500.27	4.22	3.09	
8,529.00	90.48	0.34	7,414.46	412.31	1,135.52	593.15	0.61	0.23	
8,624.00	90.35	0.87	7,413.77	507.30	1,136.52	687.02	0.57	-0.14	
8,718.00	90.18	0.16	7,413.34	601.29	1,137.37	779.87	0.78	-0.18	
8,812.00	89.96	0.16	7,413.22	695.29	1,137.63	872.64	0.23	-0.23	
8,907.00	89.17	0.08	7,413.94	790.29	1,137.83	966.38	0.84	-0.83	
9,002.00	89.69	1.13	7,414.89	885.28	1,138.83	1,060.25	1.23	0.55	
9,096.00	91.63	0.69	7,413.80	979.26	1,140.32	1,153.19	2.12	2.06	
9,191.00	91.80	359.90	7,410.96	1,074.21	1,140.81	1,246.94	0.85	0.18	
9,285.00	91.93	359.81	7,407.90	1,168.16	1,140.57	1,339.58	0.17	0.14	
9,380.00	90.26	0.34	7,406.09	1,263.14	1,140.70	1,433.29	1.84	-1.76	
9,475.00	90.26	0.16	7,405.65	1,358.14	1,141.11	1,527.06	0.19	0.00	
9,570.00	90.09	359.37	7,405.36	1,453.14	1,140.72	1,620.71	0.85	-0.18	

Survey Report

Company:	Crestone Peak Resources	Local Co-ordinate Reference:	Well DAVIS 1D-9H-G266 - Slot DAVIS 1D-9H
Project:	DJ BASIN	TVD Reference:	23' KB @ 4940.00usft
Site:	S4-T2N-R66W	MD Reference:	23' KB @ 4940.00usft
Well:	DAVIS 1D-9H-G266	North Reference:	True
Wellbore:	OH	Survey Calculation Method:	Minimum Curvature
Design:	FINAL	Database:	USA EDM 5000 Multi Users DB

Survey									
Measured Depth (usft)	Inclination (°)	Azimuth (°)	Vertical Depth (usft)	+N/-S (usft)	+E/-W (usft)	Vertical Section (usft)	Dogleg Rate (°/100usf)	Build Rate (°/100u)	Formations / Comments
9,664.00	90.26	359.29	7,405.08	1,547.13	1,139.62	1,713.24	0.20	0.18	
9,759.00	90.22	0.52	7,404.68	1,642.13	1,139.47	1,806.93	1.30	-0.04	
9,853.00	90.13	0.34	7,404.39	1,736.12	1,140.17	1,899.76	0.21	-0.10	
9,947.00	89.56	1.04	7,404.65	1,830.11	1,141.30	1,992.67	0.96	-0.61	
10,041.00	90.57	0.25	7,404.54	1,924.11	1,142.36	2,085.56	1.36	1.07	
10,135.00	90.22	1.48	7,403.89	2,018.09	1,143.78	2,178.50	1.36	-0.37	
10,230.00	91.45	359.64	7,402.51	2,113.07	1,144.71	2,272.34	2.33	1.29	
10,325.00	91.45	359.37	7,400.10	2,208.04	1,143.89	2,365.88	0.28	0.00	
10,420.00	91.71	359.11	7,397.48	2,302.99	1,142.63	2,459.34	0.39	0.27	
10,514.00	91.54	358.06	7,394.82	2,396.92	1,140.31	2,551.62	1.13	-0.18	
10,608.00	91.27	358.41	7,392.51	2,490.85	1,137.42	2,643.80	0.47	-0.29	
10,702.00	91.41	357.79	7,390.32	2,584.77	1,134.30	2,735.93	0.68	0.15	
10,797.00	89.56	358.85	7,389.51	2,679.72	1,131.52	2,829.14	2.24	-1.95	
10,891.00	88.81	359.29	7,390.85	2,773.70	1,129.99	2,921.59	0.93	-0.80	
10,986.00	89.39	0.78	7,392.34	2,868.69	1,130.05	3,015.30	1.68	0.61	
11,080.00	88.90	358.93	7,393.74	2,962.67	1,129.81	3,107.97	2.04	-0.52	
11,175.00	90.13	2.27	7,394.55	3,057.65	1,130.81	3,201.82	3.75	1.29	
11,269.00	90.18	2.45	7,394.29	3,151.57	1,134.68	3,295.10	0.20	0.05	
11,364.00	92.24	3.24	7,392.29	3,246.42	1,139.39	3,389.44	2.32	2.17	
11,458.00	90.97	0.34	7,389.65	3,340.33	1,142.32	3,482.55	3.37	-1.35	
11,553.00	91.01	0.69	7,388.01	3,435.31	1,143.18	3,576.39	0.37	0.04	
11,647.00	90.44	358.41	7,386.82	3,529.29	1,142.44	3,668.97	2.50	-0.61	
11,741.00	89.25	359.99	7,387.08	3,623.28	1,141.13	3,761.47	2.10	-1.27	
11,835.00	89.43	0.16	7,388.16	3,717.27	1,141.25	3,854.20	0.26	0.19	
11,929.00	89.12	0.08	7,389.35	3,811.26	1,141.45	3,946.95	0.34	-0.33	
12,023.00	89.34	359.37	7,390.61	3,905.25	1,141.00	4,039.59	0.79	0.23	
12,118.00	88.15	358.14	7,392.69	4,000.21	1,138.93	4,132.92	1.80	-1.25	
12,212.00	88.15	359.02	7,395.73	4,094.13	1,136.60	4,225.18	0.94	0.00	
12,306.00	88.99	358.32	7,398.07	4,188.07	1,134.42	4,317.49	1.16	0.89	
12,400.00	91.14	359.73	7,397.97	4,282.05	1,132.82	4,409.93	2.74	2.29	
12,494.00	91.23	359.20	7,396.02	4,376.03	1,131.95	4,502.49	0.57	0.10	
12,589.00	91.23	359.55	7,393.98	4,471.00	1,130.91	4,596.00	0.37	0.00	
12,684.00	91.67	0.43	7,391.58	4,565.97	1,130.89	4,689.68	1.04	0.46	
12,778.00	91.85	359.37	7,388.69	4,659.92	1,130.73	4,782.33	1.14	0.19	
12,873.00	90.62	358.49	7,386.65	4,754.88	1,128.96	4,875.71	1.59	-1.29	
12,967.00	88.73	356.74	7,387.18	4,848.79	1,125.04	4,967.70	2.74	-2.01	
13,062.00	88.64	356.74	7,389.36	4,943.61	1,119.64	5,060.35	0.09	-0.09	
13,156.00	88.81	357.97	7,391.45	5,037.48	1,115.31	5,152.24	1.32	0.18	
13,250.00	88.11	358.76	7,393.98	5,131.41	1,112.63	5,244.45	1.12	-0.74	
13,345.00	88.33	359.37	7,396.93	5,226.35	1,111.08	5,337.85	0.68	0.23	
13,439.00	89.34	0.34	7,398.84	5,320.33	1,110.84	5,430.51	1.49	1.07	
13,534.00	90.57	1.66	7,398.91	5,415.31	1,112.50	5,524.48	1.90	1.29	
13,628.00	90.66	1.75	7,397.90	5,509.26	1,115.29	5,617.62	0.14	0.10	
13,723.00	91.01	2.80	7,396.52	5,604.18	1,119.06	5,711.86	1.16	0.37	
13,817.00	90.97	1.04	7,394.90	5,698.11	1,122.21	5,805.03	1.87	-0.04	
13,911.00	91.41	0.69	7,392.94	5,792.08	1,123.63	5,897.96	0.60	0.47	
14,006.00	91.67	1.83	7,390.39	5,887.02	1,125.72	5,991.95	1.23	0.27	
14,100.00	91.10	358.58	7,388.12	5,980.98	1,126.05	6,084.69	3.51	-0.61	
14,195.00	91.80	359.37	7,385.71	6,075.93	1,124.36	6,178.08	1.11	0.74	
14,290.00	90.62	358.41	7,383.71	6,170.89	1,122.52	6,271.45	1.60	-1.24	
14,384.00	90.70	357.62	7,382.63	6,264.82	1,119.26	6,363.57	0.84	0.09	
14,478.00	88.37	354.28	7,383.39	6,358.57	1,112.62	6,454.95	4.33	-2.48	
14,573.00	88.55	353.13	7,385.94	6,452.96	1,102.21	6,546.35	1.22	0.19	

Survey Report

Company:	Crestone Peak Resources	Local Co-ordinate Reference:	Well DAVIS 1D-9H-G266 - Slot DAVIS 1D-9H
Project:	DJ BASIN	TVD Reference:	23' KB @ 4940.00usft
Site:	S4-T2N-R66W	MD Reference:	23' KB @ 4940.00usft
Well:	DAVIS 1D-9H-G266	North Reference:	True
Wellbore:	OH	Survey Calculation Method:	Minimum Curvature
Design:	FINAL	Database:	USA EDM 5000 Multi Users DB

Survey									
Measured Depth (usft)	Inclination (°)	Azimuth (°)	Vertical Depth (usft)	+N/-S (usft)	+E/-W (usft)	Vertical Section (usft)	Dogleg Rate (°/100usf)	Build Rate (°/100u)	Formations / Comments
14,667.00	89.56	354.72	7,387.49	6,546.41	1,092.26	6,636.91	2.00	1.07	
14,762.00	90.13	355.68	7,387.75	6,641.08	1,084.32	6,728.98	1.18	0.60	
14,778.00	90.31	356.82	7,387.69	6,657.04	1,083.27	6,744.56	7.21	1.12	LAST SURVEY - 14778.00' MD
14,840.00	90.31	356.82	7,387.35	6,718.95	1,079.83	6,805.06	0.00	0.00	PTB - 14840.00' MD (467 FNL, 330 FEL)

Targets									
Target Name	Dip Angle (°)	Dip Dir. (°)	TVD (usft)	+N/-S (usft)	+E/-W (usft)	Northing (usft)	Easting (usft)	Latitude	Longitude
- hit/miss target									
- Shape									
DAVIS 1D 1337' TGT	0.00	0.00	7,398.00	1,337.00	1,139.99	1,301,326.18	3,202,998.92	40.158253	-104.773708
- actual wellpath misses target center by 7.82usft at 9453.89usft MD (7405.75 TVD, 1337.03 N, 1141.05 E)									
- Point									
DAVIS 1D-9H-G266 TPZ	0.00	0.00	7,419.00	-255.25	1,144.59	1,299,734.02	3,203,016.49	40.153882	-104.773692
- actual wellpath misses target center by 25.46usft at 7863.92usft MD (7394.20 TVD, -251.49 N, 1148.95 E)									
- Point									
DAVIS 1D-9H-G266 BHI	0.00	0.00	7,389.00	6,727.15	1,119.88	1,306,715.98	3,202,934.91	40.173050	-104.773779
- actual wellpath misses target center by 40.91usft at 14840.00usft MD (7387.35 TVD, 6718.95 N, 1079.83 E)									
- Point									
DAVIS 1D 3643' TGT	0.00	0.00	7,389.00	3,643.00	1,131.38	1,303,632.03	3,202,971.54	40.164583	-104.773738
- actual wellpath misses target center by 9.89usft at 11760.73usft MD (7387.33 TVD, 3643.01 N, 1141.13 E)									
- Point									

Design Annotations					
Measured Depth (usft)	Vertical Depth (usft)	Local Coordinates			
		+N/-S (usft)	+E/-W (usft)	Comment	
7,860.11	7,393.58	-255.25	1,148.73	TPZ - 7860.11' MD (2161 FNL, 247 FEL)	
14,778.00	7,387.69	6,657.04	1,083.27	LAST SURVEY - 14778.00' MD	
14,840.00	7,387.35	6,718.95	1,079.83	PTB - 14840.00' MD (467 FNL, 330 FEL)	

Checked By: _____ Approved By: _____ Date: _____