



# Bonanza Creek Energy

North Platte A11-E14-28HNB

API # 05-123-47013

## Production

9/29/2018

Quote #: 18537

Execution #: 11577



# Bonanza Creek Energy

Attention: Mr. Adam Conry | (303) 883.3351 | [AConry@bonanzacrk.com](mailto:AConry@bonanzacrk.com)

Bonanza Creek Energy | 410 17th St Suite 1400 | Denver, CO. 80202

---

Dear Mr. Adam Conry,

Thank you for the opportunity to provide cementing services on this well. BJ Services strives to achieve complete customer satisfaction. If you have any questions regarding the services or data provided, please contact BJ Services at any time.

Sincerely,  
Gage Putnam  
Field Engineer I | (307) 887-4243 | [Gage.Putnam@bjservices.com](mailto:Gage.Putnam@bjservices.com)

Field Office 1716 East Allison Rd., Cheyenne WY, 82007  
Phone: (307) 638-5585

Sales Office 999 18th St. Suite 1200 Denver, CO 80202  
Phone: (281) 408-2361

---

# Cementing Treatment



<b>Start Date</b>	9/29/2018	<b>Well</b>	NORTH PLATTE A11-E14-28HNB
<b>End Date</b>	9/29/2018	<b>API#</b>	05-123-47013
<b>Client</b>	BONANZA CREEK ENERGY	<b>County</b>	WELD
<b>Service Sup.</b>	Wesley Bell	<b>State/Province</b>	CO
<b>District</b>	Cheyenne, WY	<b>Formation</b>	NIOBRARA
<b>Type of Job</b>	Long String	<b>Rig</b>	Akita 519
<b>Execution ID</b>	EXC-11577-N5D1D602	<b>Project ID</b>	PRJ1011243

## WELL GEOMETRY

Type	ID (in)	OD (in)	Wt. (lb/ft)	MD (ft)	TVD (ft)	Excess(%)
Previous Casing	8.92	9.63	36.00	1,609.00	1,650.00	
Open Hole	8.50	0.00	0.00	11,737.00	6,335.00	12.50
Casing	4.89	5.50	17.00	11,727.00	6,335.00	

**Shoe Length (ft):** 49.00

## HARDWARE

<b>Top Plug Used?</b>	Yes	<b>Tool Type</b>	Float Collar
<b>Top Plug Provided By</b>	Non BJ	<b>Tool Depth (ft)</b>	11,678.00
<b>Top Plug Size</b>	5.500	<b>Max Casing Pressure - Rated (psi)</b>	10,640.00
<b>Centralizers Used</b>	Yes	<b>Max Casing Pressure - Operated (psi)</b>	3,200.00
<b>Centralizers Quantity</b>	160.00	<b>Pipe Movement</b>	None
<b>Centralizers Type</b>	Bow	<b>Top Connection Thread</b>	LTC
<b>Landing Collar Depth (ft)</b>	11,678	<b>Top Connection Size</b>	5.5

## CIRCULATION PRIOR TO JOB

<b>Well Circulated By</b>	Rig	<b>Lost Circulation Prior to Cement Job</b>	No
<b>Circulation Prior to Job</b>	Yes	<b>Solids Present at End of Circulation</b>	No
<b>Circulation Time (min)</b>	120.00	<b>Flare Prior to/during the Cement Job</b>	No
<b>Circulation Rate (bpm)</b>	8.00	<b>Gas Present</b>	No
<b>Circulation Volume (bbls)</b>	960.00		

## TEMPERATURE

<b>Ambient Temperature (°F)</b>	70.00	<b>Slurry Cement Temperature (°F)</b>	65.00
<b>Mix Water Temperature (°F)</b>	65.00		

# Cementing Treatment



## BJ FLUID DETAILS

Fluid Type	Fluid Name	Density (ppg)	Yield (Cu Ft/sk)	H2O Req. (gals/sk)	Planned Top of Fluid (Ft)	Length (Ft)	Vol (sk)	Vol (Cu Ft)	Vol (bbls)
Spacer / Pre Flush / Flush	IntegraGuard EZ Spacer	12.0000			0.00				60.0000
Lead Slurry	BJCem P100.3.01C	12.5000	2.1538	12.23	0.00	5000	605	1,308.0000	232.1000
Tail Slurry	BJCem P50.6.02C	13.5000	1.4772	7.45	6,065.00	6635.29	1162	1,716.0000	305.5000
Displacement 2	Retarded Water	8.3337			13,244.00	0	0	0.0000	20.0000
Displacement Final	Displacement Final (Water)	8.3308			0.00			0.0000	251.0000

Fluid Type	Fluid Name	Component	Concentration	UOM
Spacer / Pre Flush / Flush	IntegraGuard EZ Spacer	SAND, S-8, Silica Flour, 200 Mesh	242.5200	PPB
Spacer / Pre Flush / Flush	IntegraGuard EZ Spacer	SPACER SURFACTANT, SS-247	0.5000	GPB
Spacer / Pre Flush / Flush	IntegraGuard EZ Spacer	SPACER SURFACTANT, SS-267	0.5000	GPB
Spacer / Pre Flush / Flush	IntegraGuard EZ Spacer	GELLANT WATER, GW-86	1.0000	PPB
Spacer / Pre Flush / Flush	IntegraGuard EZ Spacer	EXTENDER, BENTONITE	5.0000	PPB
Lead Slurry	BJCem P100.3.01C	IntegraSeal CELLO	0.1300	LBS/SK
Lead Slurry	BJCem P100.3.01C	CEMENT, ASTM TYPE III	100.0000	PCT
Lead Slurry	BJCem P100.3.01C	BONDING AGENT, BA-60	0.4000	BWOB
Lead Slurry	BJCem P100.3.01C	GELLANT WATER, GW-86	0.2000	BWOB
Lead Slurry	BJCem P100.3.01C	FLUID LOSS, FL-24	0.3000	BWOB
Lead Slurry	BJCem P100.3.01C	EXTENDER, BENTONITE	4.0000	BWOB
Lead Slurry	BJCem P100.3.01C	FOAM PREVENTER, FP-25	0.3000	BWOB
Lead Slurry	BJCem P100.3.01C	RETARDER, SR-20	0.4000	BWOB
Tail Slurry	BJCem P50.6.02C	FOAM PREVENTER, FP-25	0.3000	BWOB
Tail Slurry	BJCem P50.6.02C	RETARDER, SR-20	0.0700	BWOB
Tail Slurry	BJCem P50.6.02C	EXTENDER, BENTONITE	2.0000	BWOB
Tail Slurry	BJCem P50.6.02C	GELLANT WATER, GW-86	0.1000	BWOB
Tail Slurry	BJCem P50.6.02C	Flyash (Rockies)	50.0000	PCT
Tail Slurry	BJCem P50.6.02C	CEMENT, CLASS G	50.0000	PCT
Tail Slurry	BJCem P50.6.02C	FLUID LOSS, FL-66	0.2000	BWOB
Displacement 2	Retarded Water	RETARDER, R-8L	0.5000	GPB
Displacement 2	Retarded Water	BIOCIDE, BIOC11139W	0.0100	GPB
Displacement Final	Displacement Final (Water)	BIOCIDE, BIOC11139W	0.0100	GPB

# Cementing Treatment



## DISPLACEMENT AND END OF JOB SUMMARY

Displaced By	BJ Services	Amount of Cement Returned/Reversed	21.00
Calculated Displacement Volume (bbls)	271.00	Method Used to Verify Returns	Visual
Actual Displacement Volume (bbls)	271.00	Amount of Spacer to Surface	60.00
Did Float Hold?	Yes	Pressure Left on Casing (psi)	0.00
Bump Plug	Yes	Amount Bled Back After Job	3.00
Bump Plug Pressure (psi)	3,200.00	Total Volume Pumped (bbls)	869.30
Were Returns Planned at Surface	Yes	Top Out Cement Spotted	No
Cement returns During Job	Full	Lost Circulation During Cement Job	No

# EVENT LOG



**Customer Name:** BONANZA CREEK ENERGY

**Well Name:** NORTH PLATTE A11-E14-28HNB

**Job Type:** Long String

**Quote ID:** QUO-18537-G3P8B5

**Plan ID:** ORD-11577-N5D1D6

**District:** Cheyenne, WY

**Execution ID:** EXC-11577-N5D1D602

**BJ Supervisor:** Wesley Bell

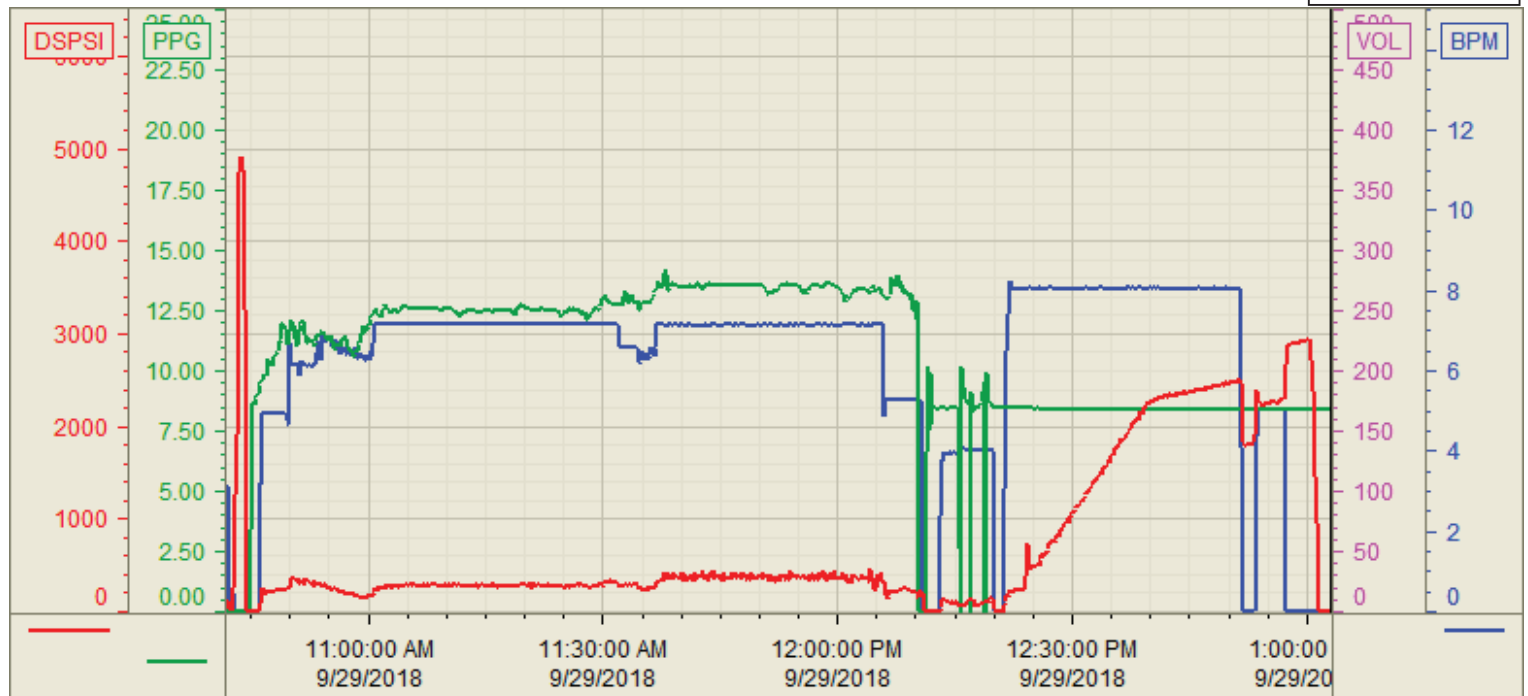
Seq.	Start Dt./Time	Event	Density (ppg)	Pump Rate (bpm)	Pump Vol (bbls)	Pipe Pressure (psi)	Comments
1	09/29/2018 08:00	Arrive on Location					Arrive on location, requested time was 09:00
2	09/29/2018 08:00	Rig Up					Rig in all BJ equipment
3	09/29/2018 09:00	Customer					Wait for rig to finish circulating well
4	09/29/2018 09:50	Safety Meeting					Hold STEACS briefing with rig crew and pump crew.
5	09/29/2018 10:43	Pressure Test	8.3400	2.00	2.00	5,000.00	Pressure test line with fresh water. good test
6	09/29/2018 10:48	Pump Spacer	12.0000	6.00	60.00	200.00	Pump Spacer, 20bbls at 12ppg, 20bbl at 11.5ppg, 20bbls at 11ppg
7	09/29/2018 11:02	Pump Lead Cement	12.5000	6.50	232.00	300.00	Pump Lead Cement at 271bbls at 12.5ppg, 605sks, Y: 2.154, WR: 12.23
8	09/29/2018 11:32	Pump Tail Cement	13.5000	7.00	305.70	500.00	Pump 305.7bbls Tail Cement at 13.5ppg, 1162sks, Y: 1.477, WR: 7.45, Top of Tail 6065'
9	09/29/2018 12:13	Clean Pumps and Lines	8.3400				clean pumps and lines, drop top plug
10	09/29/2018 12:23	Drop Top Plug	8.3400	8.00	0.00	300.00	Start Displacement
11	09/29/2018 12:36	Pump Displacement	8.3400	8.00	100.00	1,200.00	100bbls away
12	09/29/2018 12:42	Pump Displacement	8.3400	8.00	50.00	2,000.00	150bbls away
13	09/29/2018 12:54	Pump Displacement	8.3400	5.00	100.00	2,200.00	250bbls away, 170bbls away Divert Spacer to rig tank
14	09/29/2018 13:00	Land Plug	8.3400	5.00	21.00	2,200.00	271bbls away, land plug, bump pressure to 3200psi
15	09/29/2018 13:05	Check Floats	8.3400	0.00	0.00	0.00	Check floats, 3bbls back, floats held
16	09/29/2018 13:05	Rig Down					Rig out all BJ equipment
17	09/29/2018 14:00	Leave Location					

Customer: Bonanza Creek  
Well Number: A11-E14-28HNB  
Lease Info: North Platte



Print Date/Time

9/29/2018 1:33:44 PM



	Name	Y value	X value/time stamp	Tag name Y
1	DS - Press (PSI)	5.0	9/29/2018 1:02:56 PM	Cementer\DS_DISCHARGE_PRESS_DIAL
2	Recirc - Density (PPG)	8.37	9/29/2018 1:03:02 PM	Cementer\DENSITY_ACTUAL_RATE
3	Combined rate (BPM)	0.00	9/29/2018 1:03:02 PM	Cementer\Flow_Combined
4				
5				

Source: Control1 1:33:39 PM