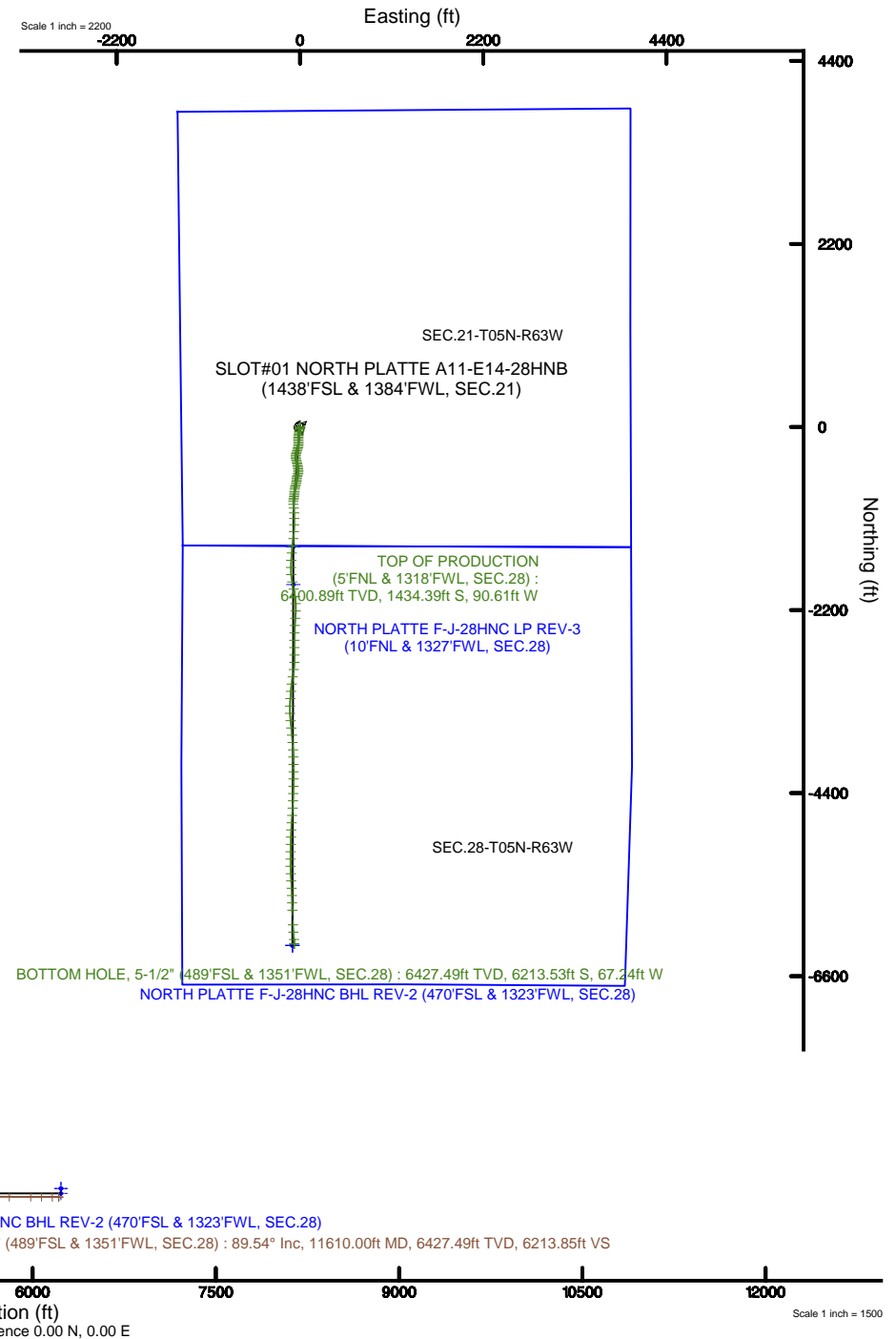


Location:	COLORADO	Slot:	SLOT#03 NORTH PLATTE F-J-28HNC (1430'FSL & 1424'FWL, SEC.21)
Field:	WELD COUNTY	Well:	NORTH PLATTE F-J-28HNC
Facility:	SEC.21-T05N-R63W	Wellbore:	NORTH PLATTE F-J-28HNC PWB
Plot reference wellpath is NORTH PLATTE F-J-28HNC (REV-E.0) PWP		Grid System: NAD83 / Lambert Colorado SP, Northern Zone (501), US feet	
True vertical depths are referenced to RIG (17KB) (RKB)		North Reference: True north	
Measured depths are referenced to RIG (17KB) (RKB)		Scale: True distance	
RIG (17KB) (RKB) to Mean Sea Level: 4507 feet		Depths are in feet	
Mean Sea Level to Ground level (At Slot: SLOT#03 NORTH PLATTE F-J-28HNC (1430'FSL & 1424'FWL, SEC.21)): 0 feet		Created by: budj@amh on 2018-11-26	
Coordinates are in feet referenced to Slot		Database: Denver	





Actual Wellpath Report

NORTH PLATTE F-J-28HNC AWP

Page 1 of 9



REFERENCE WELLPATH IDENTIFICATION

Operator	BONANZA CREEK OIL COMPANY	Slot	SLOT#03 NORTH PLATTE F-J-28HNC (1430'FSL & 1424'FWL, SEC.21)
Area	COLORADO	Well	NORTH PLATTE F-J-28HNC
Field	WELD COUNTY	Wellbore	NORTH PLATTE F-J-28HNC AWB
Facility	SEC.21-T05N-R63W		

REPORT SETUP INFORMATION

Projection System	NAD83 / Lambert Colorado SP, Northern Zone (501), US feet	Software System	WellArchitect® 5.1
North Reference	True	User	Bushjamh
Scale	0.999959	Report Generated	11/26/2018 at 1:04:27 PM
Convergence at slot	0.68° East	Database/Source file	Denver/NORTH_PLATTE_F-J-28HNC_AWP.xml

WELLPATH LOCATION

	Local coordinates		Grid coordinates		Geographic coordinates	
	North[ft]	East[ft]	Easting[US ft]	Northing[US ft]	Latitude	Longitude
Slot Location	-7.29	39.84	3293791.21	1383627.34	40°22'53.987"N	104°26'43.418"W
Facility Reference Pt			3293751.29	1383634.15	40°22'54.059"N	104°26'43.933"W
Field Reference Pt			3224525.77	1254425.87	40°01'44.400"N	104°41'53.556"W

WELLPATH DATUM

Calculation method	Minimum curvature	RIG (17'KB) (RKB) to Facility Vertical Datum	4570.00ft
Horizontal Reference Pt	Slot	RIG (17'KB) (RKB) to Mean Sea Level	4570.00ft
Vertical Reference Pt	RIG (17'KB) (RKB)	RIG (17'KB) (RKB) to Ground Level at Slot (SLOT#03 NORTH PLATTE F-J-28HNC (1430'FSL & 1424'FWL, SEC.21))	4570.00ft
MD Reference Pt	RIG (17'KB) (RKB)	Section Origin	N 0.00, E 0.00 ft
Field Vertical Reference	Mean Sea Level	Section Azimuth	180.84°



Actual Wellpath Report

NORTH PLATTE F-J-28HNC AWP

Page 2 of 9



REFERENCE WELLPATH IDENTIFICATION

Operator	BONANZA CREEK OIL COMPANY	Slot	SLOT#03 NORTH PLATTE F-J-28HNC (1430'FSL & 1424'FWL, SEC.21)
Area	COLORADO	Well	NORTH PLATTE F-J-28HNC
Field	WELD COUNTY	Wellbore	NORTH PLATTE F-J-28HNC AWB
Facility	SEC.21-T05N-R63W		

WELLPATH DATA (133 stations) † = interpolated/extrapolated station

MD [ft]	Inclination [°]	Azimuth [°]	TVD [ft]	Vert Sect [ft]	North [ft]	East [ft]	Latitude	Longitude	DLS [°/100ft]	Comments
0.00†	0.000	164.150	0.00	0.00	0.00	0.00	40°22'53.987"N	104°26'43.418"W	0.00	
17.00	0.000	164.150	17.00	0.00	0.00	0.00	40°22'53.987"N	104°26'43.418"W	0.00	
131.00	0.990	164.150	130.99	0.94	-0.95	0.27	40°22'53.977"N	104°26'43.415"W	0.87	
219.00	1.080	171.990	218.98	2.49	-2.50	0.59	40°22'53.962"N	104°26'43.411"W	0.19	
309.00	0.070	260.450	308.97	3.34	-3.35	0.66	40°22'53.954"N	104°26'43.410"W	1.20	
396.00	0.440	285.190	395.97	3.27	-3.27	0.28	40°22'53.954"N	104°26'43.415"W	0.43	
486.00	0.100	281.910	485.97	3.17	-3.16	-0.13	40°22'53.956"N	104°26'43.420"W	0.38	
575.00	0.440	273.270	574.97	3.14	-3.13	-0.55	40°22'53.956"N	104°26'43.425"W	0.38	
665.00	0.410	263.260	664.97	3.16	-3.15	-1.21	40°22'53.956"N	104°26'43.434"W	0.09	
755.00	0.590	322.660	754.97	2.84	-2.82	-1.81	40°22'53.959"N	104°26'43.442"W	0.58	
843.00	0.520	302.410	842.96	2.28	-2.24	-2.42	40°22'53.965"N	104°26'43.450"W	0.24	
934.00	0.600	271.060	933.96	2.06	-2.01	-3.25	40°22'53.967"N	104°26'43.460"W	0.34	
1023.00	0.100	16.040	1022.96	1.98	-1.93	-3.69	40°22'53.968"N	104°26'43.466"W	0.71	
1114.00	0.220	132.280	1113.96	2.02	-1.97	-3.54	40°22'53.967"N	104°26'43.464"W	0.31	
1206.00	0.470	124.710	1205.95	2.35	-2.30	-3.10	40°22'53.964"N	104°26'43.458"W	0.28	
1295.00	0.870	77.730	1294.95	2.40	-2.37	-2.14	40°22'53.963"N	104°26'43.446"W	0.73	
1383.00	0.250	111.070	1382.94	2.31	-2.29	-1.31	40°22'53.964"N	104°26'43.435"W	0.77	
1474.00	0.590	66.290	1473.94	2.19	-2.18	-0.69	40°22'53.965"N	104°26'43.427"W	0.49	
1562.00	0.390	347.370	1561.94	1.71	-1.70	-0.35	40°22'53.970"N	104°26'43.423"W	0.73	
1667.00	0.580	157.880	1666.94	1.85	-1.85	-0.22	40°22'53.969"N	104°26'43.421"W	0.92	
1755.00	2.800	184.040	1754.89	4.41	-4.40	-0.21	40°22'53.943"N	104°26'43.421"W	2.61	
1842.00	4.940	186.590	1841.69	10.26	-10.24	-0.79	40°22'53.886"N	104°26'43.429"W	2.47	
1929.00	8.530	191.870	1928.08	20.32	-20.28	-2.54	40°22'53.786"N	104°26'43.451"W	4.18	
2018.00	12.460	193.070	2015.57	36.19	-36.10	-6.07	40°22'53.630"N	104°26'43.497"W	4.42	
2105.00	11.280	190.920	2100.71	53.74	-53.60	-9.81	40°22'53.457"N	104°26'43.545"W	1.45	
2192.00	11.340	189.540	2186.02	70.57	-70.39	-12.84	40°22'53.291"N	104°26'43.584"W	0.32	
2279.00	11.640	187.640	2271.28	87.74	-87.52	-15.42	40°22'53.122"N	104°26'43.618"W	0.56	
2367.00	11.180	186.420	2357.54	105.05	-104.80	-17.56	40°22'52.951"N	104°26'43.645"W	0.59	
2455.00	11.320	184.700	2443.85	122.15	-121.89	-19.22	40°22'52.782"N	104°26'43.667"W	0.41	
2544.00	11.600	182.650	2531.07	139.81	-139.53	-20.35	40°22'52.608"N	104°26'43.681"W	0.56	



Actual Wellpath Report

NORTH PLATTE F-J-28HNC AWP

Page 3 of 9



REFERENCE WELLPATH IDENTIFICATION

Operator	BONANZA CREEK OIL COMPANY	Slot	SLOT#03 NORTH PLATTE F-J-28HNC (1430'FSL & 1424'FWL, SEC.21)
Area	COLORADO	Well	NORTH PLATTE F-J-28HNC
Field	WELD COUNTY	Wellbore	NORTH PLATTE F-J-28HNC AWB
Facility	SEC.21-T05N-R63W		

WELLPATH DATA (133 stations)

MD [ft]	Inclination [°]	Azimuth [°]	TVD [ft]	Vert Sect [ft]	North [ft]	East [ft]	Latitude	Longitude	DLS [°/100ft]	Comments
2632.00	12.490	177.620	2617.14	158.16	-157.88	-20.36	40°22'52.427"N	104°26'43.682"W	1.56	
2720.00	12.130	173.730	2703.12	176.83	-176.57	-18.96	40°22'52.242"N	104°26'43.663"W	1.03	
2808.00	12.160	180.220	2789.15	195.28	-195.03	-17.98	40°22'52.060"N	104°26'43.651"W	1.55	
2897.00	12.250	184.200	2876.14	214.08	-213.82	-18.71	40°22'51.874"N	104°26'43.660"W	0.95	
2984.00	11.940	186.500	2961.21	232.25	-231.97	-20.41	40°22'51.695"N	104°26'43.682"W	0.66	
3072.00	12.190	195.680	3047.27	250.29	-249.96	-23.95	40°22'51.517"N	104°26'43.728"W	2.20	
3161.00	12.130	197.410	3134.28	268.33	-267.93	-29.28	40°22'51.339"N	104°26'43.797"W	0.41	
3250.00	12.170	196.440	3221.28	286.33	-285.85	-34.74	40°22'51.162"N	104°26'43.867"W	0.23	
3336.00	12.220	200.760	3305.34	303.62	-303.06	-40.53	40°22'50.992"N	104°26'43.942"W	1.06	
3424.00	12.340	195.750	3391.33	321.46	-320.82	-46.38	40°22'50.817"N	104°26'44.018"W	1.22	
3512.00	12.610	187.390	3477.26	340.09	-339.39	-50.17	40°22'50.633"N	104°26'44.067"W	2.07	
3601.00	12.320	180.580	3564.17	359.24	-358.52	-51.52	40°22'50.444"N	104°26'44.084"W	1.68	
3688.00	12.530	167.750	3649.15	377.72	-377.03	-49.61	40°22'50.261"N	104°26'44.059"W	3.18	
3777.00	12.070	163.480	3736.11	396.00	-395.39	-44.91	40°22'50.080"N	104°26'43.999"W	1.14	
3866.00	12.140	165.060	3823.13	413.89	-413.35	-39.85	40°22'49.902"N	104°26'43.933"W	0.38	
3954.00	12.160	167.560	3909.16	431.82	-431.34	-35.47	40°22'49.724"N	104°26'43.877"W	0.60	
4041.00	11.980	169.750	3994.23	449.59	-449.18	-31.89	40°22'49.548"N	104°26'43.830"W	0.57	
4128.00	12.340	167.020	4079.28	467.48	-467.12	-28.20	40°22'49.371"N	104°26'43.783"W	0.78	
4216.00	12.130	170.490	4165.29	485.71	-485.40	-24.56	40°22'49.190"N	104°26'43.736"W	0.87	
4304.00	12.290	172.260	4251.30	504.07	-503.80	-21.77	40°22'49.008"N	104°26'43.700"W	0.46	
4391.00	12.440	175.650	4336.28	522.55	-522.32	-19.81	40°22'48.825"N	104°26'43.674"W	0.85	
4479.00	12.410	182.880	4422.22	541.44	-541.22	-19.57	40°22'48.639"N	104°26'43.671"W	1.77	
4568.00	12.520	193.480	4509.14	560.42	-560.15	-22.30	40°22'48.452"N	104°26'43.707"W	2.57	
4657.00	12.470	203.970	4596.04	578.67	-578.31	-28.45	40°22'48.272"N	104°26'43.786"W	2.55	
4743.00	12.340	196.760	4680.04	596.05	-595.60	-34.87	40°22'48.101"N	104°26'43.869"W	1.81	
4832.00	12.430	188.090	4766.97	614.69	-614.19	-38.96	40°22'47.918"N	104°26'43.922"W	2.09	
4921.00	12.450	179.990	4853.89	633.79	-633.27	-40.31	40°22'47.729"N	104°26'43.939"W	1.96	
5009.00	12.750	181.800	4939.77	652.99	-652.46	-40.61	40°22'47.539"N	104°26'43.943"W	0.56	
5097.00	12.620	195.530	5025.64	672.00	-671.43	-43.49	40°22'47.352"N	104°26'43.980"W	3.42	
5185.00	12.940	199.730	5111.46	690.62	-689.97	-49.39	40°22'47.169"N	104°26'44.057"W	1.12	



Actual Wellpath Report

NORTH PLATTE F-J-28HNC AWP

Page 4 of 9



REFERENCE WELLPATH IDENTIFICATION

Operator	BONANZA CREEK OIL COMPANY	Slot	SLOT#03 NORTH PLATTE F-J-28HNC (1430'FSL & 1424'FWL, SEC.21)
Area	COLORADO	Well	NORTH PLATTE F-J-28HNC
Field	WELD COUNTY	Wellbore	NORTH PLATTE F-J-28HNC AWB
Facility	SEC.21-T05N-R63W		

WELLPATH DATA (133 stations) † = interpolated/extrapolated station

MD [ft]	Inclination [°]	Azimuth [°]	TVD [ft]	Vert Sect [ft]	North [ft]	East [ft]	Latitude	Longitude	DLS [°/100ft]	Comments
5272.00	12.860	194.370	5196.27	709.25	-708.52	-55.08	40°22'46.985"N	104°26'44.130"W	1.38	
5359.00	12.950	191.620	5281.08	728.24	-727.45	-59.45	40°22'46.798"N	104°26'44.187"W	0.71	
5448.00	12.970	190.650	5367.81	747.88	-747.03	-63.30	40°22'46.605"N	104°26'44.236"W	0.25	
5579.00	12.900	183.740	5495.49	776.97	-776.07	-66.98	40°22'46.318"N	104°26'44.284"W	1.18	
5667.00	12.970	177.720	5581.26	796.64	-795.74	-67.22	40°22'46.124"N	104°26'44.287"W	1.53	
5755.00	13.020	187.580	5667.02	816.35	-815.44	-68.14	40°22'45.929"N	104°26'44.299"W	2.52	
5843.00	12.480	189.280	5752.85	835.60	-834.65	-70.98	40°22'45.739"N	104°26'44.336"W	0.75	
5931.00	12.850	189.290	5838.71	854.68	-853.69	-74.09	40°22'45.551"N	104°26'44.376"W	0.42	
6019.00	12.770	192.070	5924.52	873.90	-872.86	-77.71	40°22'45.362"N	104°26'44.422"W	0.71	
6108.00	17.800	182.660	6010.36	897.17	-896.08	-80.40	40°22'45.132"N	104°26'44.457"W	6.28	
6197.00	26.830	174.270	6092.63	930.79	-929.73	-79.02	40°22'44.799"N	104°26'44.439"W	10.73	
6285.00	36.750	173.490	6167.33	976.75	-975.77	-74.04	40°22'44.345"N	104°26'44.375"W	11.28	
6372.00	45.210	178.330	6232.97	1033.52	-1032.60	-70.18	40°22'43.783"N	104°26'44.325"W	10.38	
6459.00	54.290	179.710	6289.12	1099.82	-1098.92	-69.10	40°22'43.128"N	104°26'44.311"W	10.51	
6548.00	64.000	180.850	6334.72	1176.12	-1175.23	-69.51	40°22'42.374"N	104°26'44.317"W	10.97	
6636.00	72.060	183.420	6367.62	1257.64	-1256.71	-72.60	40°22'41.568"N	104°26'44.356"W	9.55	
6724.00	81.130	186.890	6388.00	1342.89	-1341.85	-80.33	40°22'40.727"N	104°26'44.456"W	11.00	
6810.00	82.900	185.880	6399.95	1427.65	-1426.49	-89.80	40°22'39.891"N	104°26'44.579"W	2.36	
6818.00†	83.520	185.833	6400.89	1435.56	-1434.39	-90.61	40°22'39.813"N	104°26'44.589"W	7.77	TOP OF PRODUCTION (5'FNL & 1318'FWL, SEC.28)
6898.00	89.720	185.370	6405.61	1515.11	-1513.83	-98.40	40°22'39.028"N	104°26'44.690"W	7.77	
6987.00	89.910	183.550	6405.90	1603.93	-1602.56	-105.32	40°22'38.151"N	104°26'44.779"W	2.06	
7073.00	89.970	180.660	6405.99	1689.90	-1688.49	-108.48	40°22'37.302"N	104°26'44.820"W	3.36	
7160.00	89.880	174.770	6406.10	1776.73	-1775.38	-105.01	40°22'36.443"N	104°26'44.775"W	6.77	
7249.00	89.880	169.730	6406.29	1864.70	-1863.54	-93.02	40°22'35.572"N	104°26'44.620"W	5.66	
7337.00	89.820	168.050	6406.52	1950.79	-1949.89	-76.06	40°22'34.719"N	104°26'44.401"W	1.91	
7425.00	90.000	171.990	6406.66	2037.21	-2036.54	-60.81	40°22'33.862"N	104°26'44.204"W	4.48	
7512.00	90.030	176.510	6406.63	2123.61	-2123.08	-52.10	40°22'33.007"N	104°26'44.092"W	5.20	
7601.00	88.860	182.190	6407.50	2212.54	-2212.03	-51.09	40°22'32.128"N	104°26'44.078"W	6.52	
7688.00	88.890	184.360	6409.20	2299.44	-2298.87	-56.06	40°22'31.270"N	104°26'44.143"W	2.49	
7775.00	88.860	183.040	6410.91	2386.32	-2385.67	-61.67	40°22'30.412"N	104°26'44.215"W	1.52	



Actual Wellpath Report

NORTH PLATTE F-J-28HNC AWP

Page 5 of 9



REFERENCE WELLPATH IDENTIFICATION

Operator	BONANZA CREEK OIL COMPANY	Slot	SLOT#03 NORTH PLATTE F-J-28HNC (1430'FSL & 1424'FWL, SEC.21)
Area	COLORADO	Well	NORTH PLATTE F-J-28HNC
Field	WELD COUNTY	Wellbore	NORTH PLATTE F-J-28HNC AWB
Facility	SEC.21-T05N-R63W		

WELLPATH DATA (133 stations)

MD [ft]	Inclination [°]	Azimuth [°]	TVD [ft]	Vert Sect [ft]	North [ft]	East [ft]	Latitude	Longitude	DLS [°/100ft]	Comments
7865.00	88.800	182.030	6412.75	2476.26	-2475.56	-65.65	40°22'29.524"N	104°26'44.267"W	1.12	
7952.00	88.890	181.000	6414.50	2563.23	-2562.51	-67.95	40°22'28.665"N	104°26'44.296"W	1.19	
8041.00	88.950	179.450	6416.18	2652.21	-2651.49	-68.30	40°22'27.786"N	104°26'44.301"W	1.74	
8130.00	90.000	178.680	6417.00	2741.16	-2740.47	-66.85	40°22'26.906"N	104°26'44.282"W	1.46	
8218.00	90.030	182.260	6416.97	2829.14	-2828.46	-67.57	40°22'26.037"N	104°26'44.291"W	4.07	
8306.00	90.060	187.250	6416.90	2916.91	-2916.13	-74.86	40°22'25.171"N	104°26'44.386"W	5.67	
8395.00	89.970	189.180	6416.88	3005.17	-3004.21	-87.58	40°22'24.300"N	104°26'44.550"W	2.17	
8482.00	89.940	186.890	6416.95	3091.48	-3090.35	-99.74	40°22'23.449"N	104°26'44.707"W	2.63	
8570.00	89.940	184.750	6417.04	3179.14	-3177.89	-108.66	40°22'22.584"N	104°26'44.822"W	2.43	
8657.00	90.090	184.220	6417.02	3265.96	-3264.62	-115.46	40°22'21.727"N	104°26'44.910"W	0.63	
8746.00	90.310	181.690	6416.71	3354.90	-3353.50	-120.05	40°22'20.849"N	104°26'44.969"W	2.85	
8835.00	90.250	177.170	6416.27	3443.85	-3442.47	-119.17	40°22'19.969"N	104°26'44.958"W	5.08	
8923.00	90.310	174.090	6415.84	3531.47	-3530.20	-112.46	40°22'19.102"N	104°26'44.871"W	3.50	
9011.00	90.150	174.750	6415.49	3618.92	-3617.78	-103.90	40°22'18.237"N	104°26'44.761"W	0.77	
9098.00	90.180	175.030	6415.24	3705.45	-3704.44	-96.16	40°22'17.381"N	104°26'44.661"W	0.32	
9186.00	89.880	175.840	6415.19	3793.06	-3792.16	-89.15	40°22'16.514"N	104°26'44.570"W	0.98	
9274.00	89.880	176.630	6415.38	3880.77	-3879.97	-83.37	40°22'15.646"N	104°26'44.496"W	0.90	
9361.00	90.060	178.200	6415.42	3967.61	-3966.87	-79.45	40°22'14.787"N	104°26'44.445"W	1.82	
9450.00	90.060	178.970	6415.33	4056.54	-4055.85	-77.25	40°22'13.908"N	104°26'44.416"W	0.87	
9538.00	89.880	179.910	6415.38	4144.52	-4143.84	-76.39	40°22'13.039"N	104°26'44.405"W	1.09	
9625.00	89.970	180.910	6415.49	4231.51	-4230.84	-77.01	40°22'12.179"N	104°26'44.413"W	1.15	
9712.00	88.800	181.110	6416.42	4318.50	-4317.82	-78.55	40°22'11.320"N	104°26'44.433"W	1.36	
9800.00	88.740	181.710	6418.31	4406.48	-4405.77	-80.71	40°22'10.450"N	104°26'44.461"W	0.69	
9888.00	88.890	182.660	6420.13	4494.44	-4493.69	-84.07	40°22'09.582"N	104°26'44.505"W	1.09	
9976.00	89.020	183.490	6421.74	4582.35	-4581.54	-88.79	40°22'08.713"N	104°26'44.565"W	0.95	
10064.00	88.890	184.080	6423.34	4670.22	-4669.34	-94.60	40°22'07.846"N	104°26'44.641"W	0.69	
10151.00	88.770	183.280	6425.12	4757.10	-4756.14	-100.18	40°22'06.988"N	104°26'44.713"W	0.93	
10239.00	90.150	183.390	6425.95	4845.01	-4843.98	-105.30	40°22'06.120"N	104°26'44.779"W	1.57	
10325.00	90.000	180.980	6425.84	4930.98	-4929.91	-108.58	40°22'05.271"N	104°26'44.821"W	2.81	
10413.00	90.150	181.530	6425.72	5018.97	-5017.89	-110.50	40°22'04.402"N	104°26'44.846"W	0.65	



Actual Wellpath Report

NORTH PLATTE F-J-28HNC AWP

Page 6 of 9



REFERENCE WELLPATH IDENTIFICATION

Operator	BONANZA CREEK OIL COMPANY	Slot	SLOT#03 NORTH PLATTE F-J-28HNC (1430'FSL & 1424'FWL, SEC.21)
Area	COLORADO	Well	NORTH PLATTE F-J-28HNC
Field	WELD COUNTY	Wellbore	NORTH PLATTE F-J-28HNC AWB
Facility	SEC.21-T05N-R63W		

WELLPATH DATA (133 stations)

MD [ft]	Inclination [°]	Azimuth [°]	TVD [ft]	Vert Sect [ft]	North [ft]	East [ft]	Latitude	Longitude	DLS [°/100ft]	Comments
10500.00	90.000	181.040	6425.61	5105.97	-5104.87	-112.45	40°22'03.542"N	104°26'44.871"W	0.59	
10588.00	90.030	180.230	6425.58	5193.97	-5192.86	-113.43	40°22'02.673"N	104°26'44.884"W	0.92	
10675.00	90.000	179.040	6425.56	5280.95	-5279.86	-112.87	40°22'01.813"N	104°26'44.877"W	1.37	
10764.00	90.280	177.550	6425.34	5369.86	-5368.82	-110.23	40°22'00.934"N	104°26'44.842"W	1.70	
10852.00	89.910	176.470	6425.20	5457.66	-5456.70	-105.64	40°22'00.065"N	104°26'44.783"W	1.30	
10940.00	89.970	176.790	6425.29	5545.42	-5544.55	-100.46	40°21'59.197"N	104°26'44.716"W	0.37	
11028.00	90.060	178.500	6425.27	5633.28	-5632.47	-96.85	40°21'58.329"N	104°26'44.670"W	1.95	
11116.00	89.940	178.610	6425.27	5721.21	-5720.44	-94.63	40°21'57.459"N	104°26'44.641"W	0.18	
11204.00	89.600	177.250	6425.62	5809.10	-5808.38	-91.45	40°21'56.590"N	104°26'44.600"W	1.59	
11380.00	89.940	178.240	6426.33	5984.84	-5984.24	-84.53	40°21'54.852"N	104°26'44.510"W	0.59	
11468.00	89.780	175.850	6426.54	6072.64	-6072.12	-79.99	40°21'53.984"N	104°26'44.452"W	2.72	
11557.00	89.540	174.390	6427.07	6161.19	-6160.79	-72.42	40°21'53.108"N	104°26'44.354"W	1.66	
11610.00	89.540	174.390	6427.49	6213.85	-6213.53	-67.24	40°21'52.587"N	104°26'44.287"W	0.00	BOTTOM HOLE, 5-1/2" (489'FSL & 1351'FWL, SEC.28)



Actual Wellpath Report

NORTH PLATTE F-J-28HNC AWP

Page 7 of 9



REFERENCE WELLPATH IDENTIFICATION

Operator	BONANZA CREEK OIL COMPANY	Slot	SLOT#03 NORTH PLATTE F-J-28HNC (1430'FSL & 1424'FWL, SEC.21)
Area	COLORADO	Well	NORTH PLATTE F-J-28HNC
Field	WELD COUNTY	Wellbore	NORTH PLATTE F-J-28HNC AWB
Facility	SEC.21-T05N-R63W		

TARGETS

Name	TVD [ft]	North [ft]	East [ft]	Grid East [US ft]	Grid North [US ft]	Latitude	Longitude	Shape
SEC.21-T05N-R63W	-8.00	205.86	-126.19	3293662.59	1383831.67	40°22'56.021"N	104°26'45.049"W	polygon
SEC.28-T05N-R63W	-8.00	-1713.81	3547.60	3297358.79	1381955.91	40°22'37.049"N	104°25'57.580"W	polygon
NORTH PLATTE F-J-28HNC BHL (470'FSL & 1323'FWL, SEC.28)	6358.00	-6231.81	-88.22	3293777.11	1377395.18	40°21'52.406"N	104°26'44.558"W	point
NORTH PLATTE F-J-28HNC BHL REV-1 (470'FSL & 1323'FWL, SEC.28)	6358.00	-6231.16	-91.68	3293773.64	1377395.79	40°21'52.412"N	104°26'44.603"W	point
NORTH PLATTE F-J-28HNC LP (470'FNL & 1327'FWL, SEC.28)	6358.00	-1894.42	-79.20	3293734.55	1381732.18	40°22'35.267"N	104°26'44.442"W	point
NORTH PLATTE F-J-28HNC LP REV-1 (10'FNL & 1327'FWL, SEC.28)	6358.00	-1434.42	-79.20	3293729.08	1382192.13	40°22'39.812"N	104°26'44.442"W	point
NORTH PLATTE F-J-28HNC LP REV-2 (10'FNL & 1327'FWL, SEC.28)	6358.00	-1439.76	-80.24	3293728.10	1382186.79	40°22'39.760"N	104°26'44.455"W	point
NORTH PLATTE F-J-28HNC BHL REV-2 (470'FSL & 1323'FWL, SEC.28)	6398.00	-6231.16	-91.68	3293773.64	1377395.79	40°21'52.412"N	104°26'44.603"W	point
NORTH PLATTE F-J-28HNC LP REV-3 (10'FNL & 1327'FWL, SEC.28)	6398.00	-1439.76	-80.24	3293728.10	1382186.79	40°22'39.760"N	104°26'44.455"W	point
SEC.28-T05N-R63W 460'SETBACKS	6425.00	-1713.81	3547.60	3297358.79	1381955.91	40°22'37.049"N	104°25'57.580"W	polygon



Actual Wellpath Report

NORTH PLATTE F-J-28HNC AWP

Page 8 of 9



REFERENCE WELLPATH IDENTIFICATION

Operator	BONANZA CREEK OIL COMPANY	Slot	SLOT#03 NORTH PLATTE F-J-28HNC (1430'FSL & 1424'FWL, SEC.21)
Area	COLORADO	Well	NORTH PLATTE F-J-28HNC
Field	WELD COUNTY	Wellbore	NORTH PLATTE F-J-28HNC AWB
Facility	SEC.21-T05N-R63W		

WELLPATH COMPOSITION - Ref Wellbore: NORTH PLATTE F-J-28HNC AWB Ref Wellpath: NORTH PLATTE F-J-28HNC AWP

Start MD [ft]	End MD [ft]	Positional Uncertainty Model	Log Name/Comment	Wellbore
17.00	1562.00	BHI NaviTrak (Standard)	SURFACE HOLE SURVEYS <131-1562>	NORTH PLATTE F-J-28HNC AWB
1562.00	11557.00	BHI AutoTrak Curve (Axial Corr, Short spacing)	BHI ATC SURVEYS <1667-11557>	NORTH PLATTE F-J-28HNC AWB
11557.00	11610.00	Blind Drilling (std)	Projection to bit	NORTH PLATTE F-J-28HNC AWB



Actual Wellpath Report

NORTH PLATTE F-J-28HNC AWP

Page 9 of 9



REFERENCE WELLPATH IDENTIFICATION

Operator	BONANZA CREEK OIL COMPANY	Slot	SLOT#03 NORTH PLATTE F-J-28HNC (1430'FSL & 1424'FWL, SEC.21)
Area	COLORADO	Well	NORTH PLATTE F-J-28HNC
Field	WELD COUNTY	Wellbore	NORTH PLATTE F-J-28HNC AWB
Facility	SEC.21-T05N-R63W		

WELLPATH COMMENTS

MD [ft]	Inclination [°]	Azimuth [°]	TVD [ft]	Comment
6818.00	83.520	185.833	6400.89	TOP OF PRODUCTION (5'FNL & 1318'FWL, SEC.28)
11610.00	89.540	174.390	6427.49	BOTTOM HOLE, 5-1/2" (489'FSL & 1351'FWL, SEC.28)