



## Service and Tool Mnemonics

Mnemonic	Name	Description
ATC_SU	ATC_SU	Auto Trak Curve Steering Unit
ATC_MWD	ATC_MWD	Auto Trak Curve MWD
ATC_LCPM	ATC_LCPM	Auto Trak Curve LCPM

## Comments

- 1 Depth measurements were obtained from a depth control system not supplied or operated by Baker Hughes. Due to lack of control by Baker Hughes logging engineers, depth calibrations and measurements could not be independently verified.
- 2 Baker Hughes LWD Runs 1 and 2 utilized 8 inch NaviTrak Service (Directional) behind a 13.5 inch bit and a steerable assembly from 105 to 1562 feet MD (105 to 1557 feet TVD). No logging data was acquired through out that run.
- 3 Baker Hughes LWD Run 3 utilized 6.75 inch NaviGamma Service (Gamma Ray and Directional) behind a 8.5 inch bit and a steerable assembly from 1562 to 17293 feet MD (1557 to 7086 feet TVD).
- 4 The GRAM data is presented on a scale of 0 to 300 API, per the client's request

## Remarks

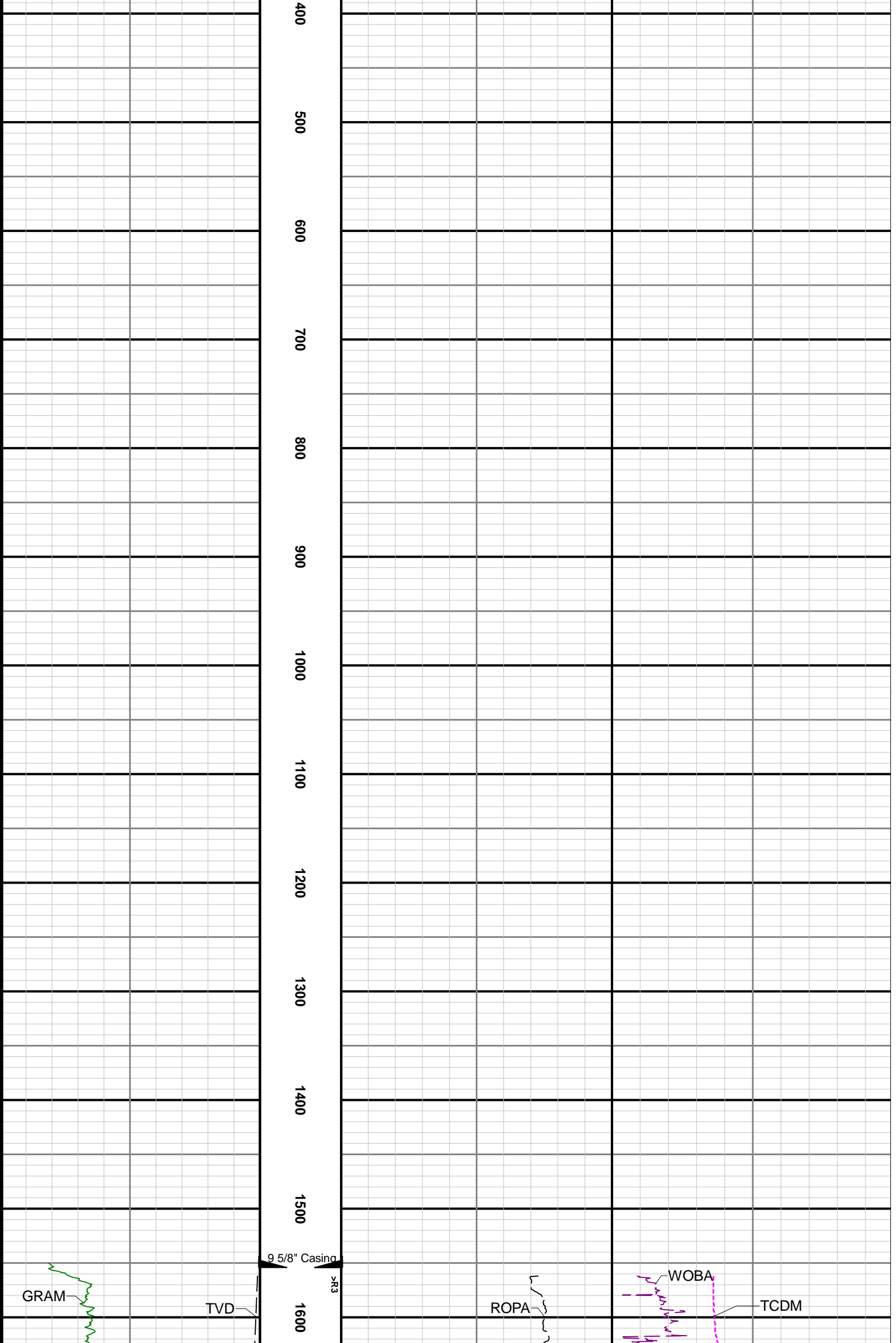
Number	Measured Depth (ft)	Hole Section (in)	Run No.	Remark
1	14597.00	8.500	3	The GRTM curve exceeds the 600 min scale in the interval 14597 14609 feet MD (7086 feet TVD) because it was not logged for up to 23 hours after performing a wiper trip.
2	17280.00	8.500	3	The interval from 17280 to 17293 feet MD (7086 feet TVD) was not logged after being drilled due to sensor to bit offset at well TD.

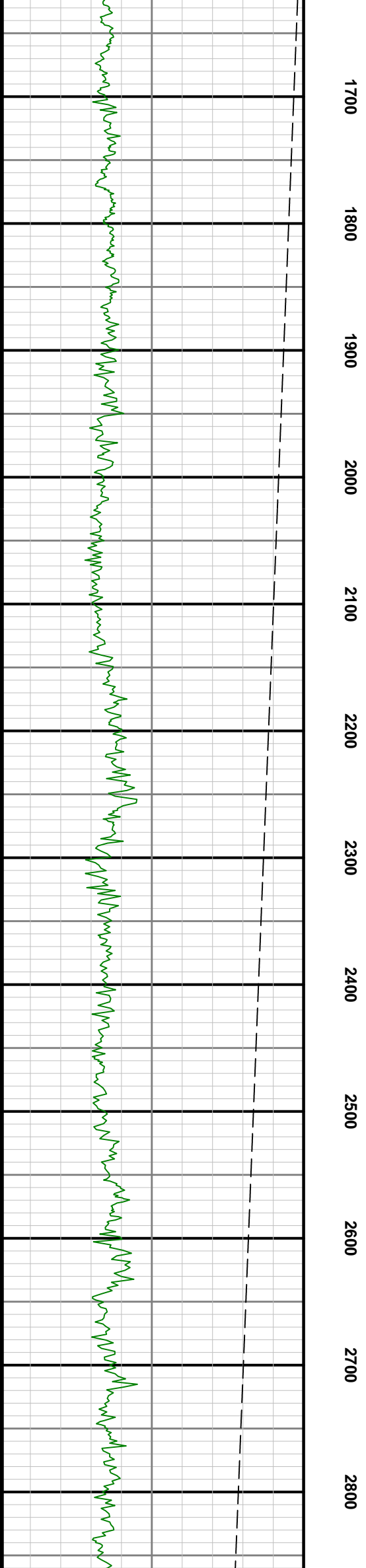
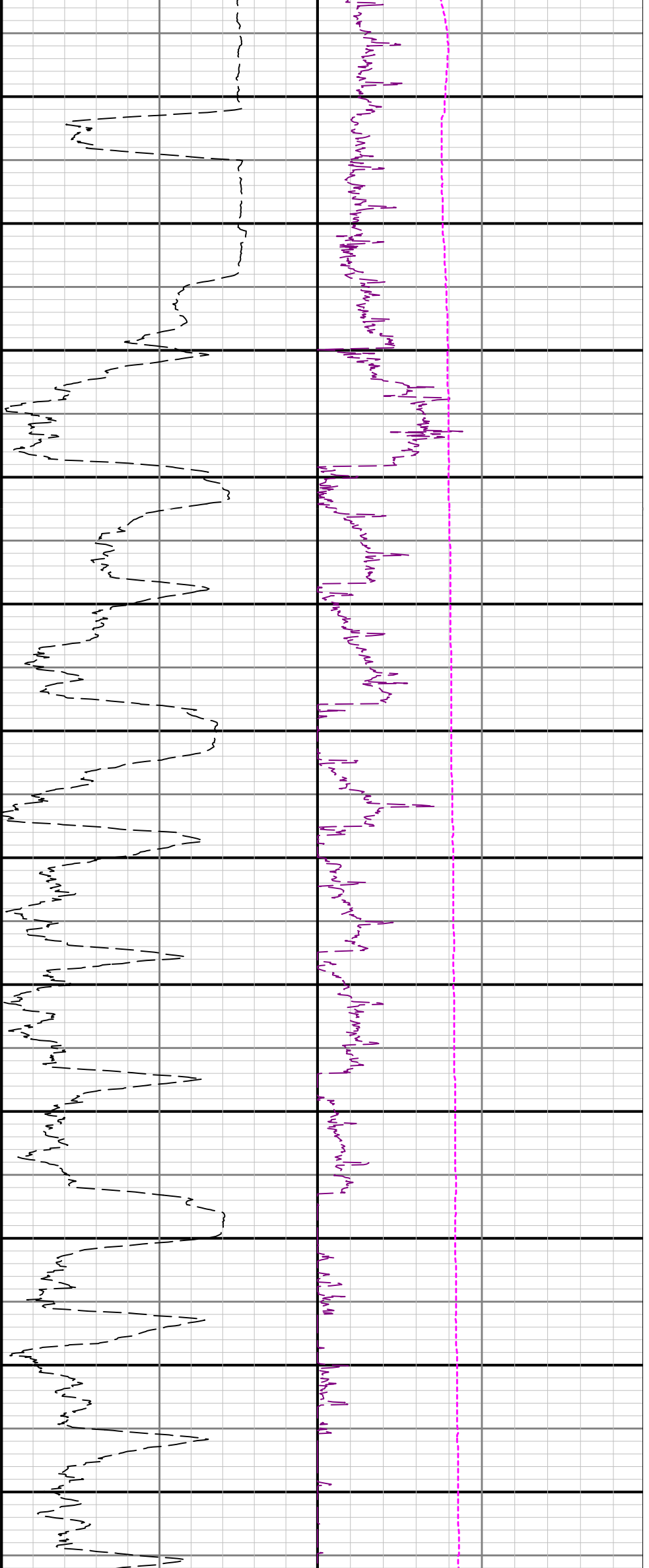
# Curve Mnemonics

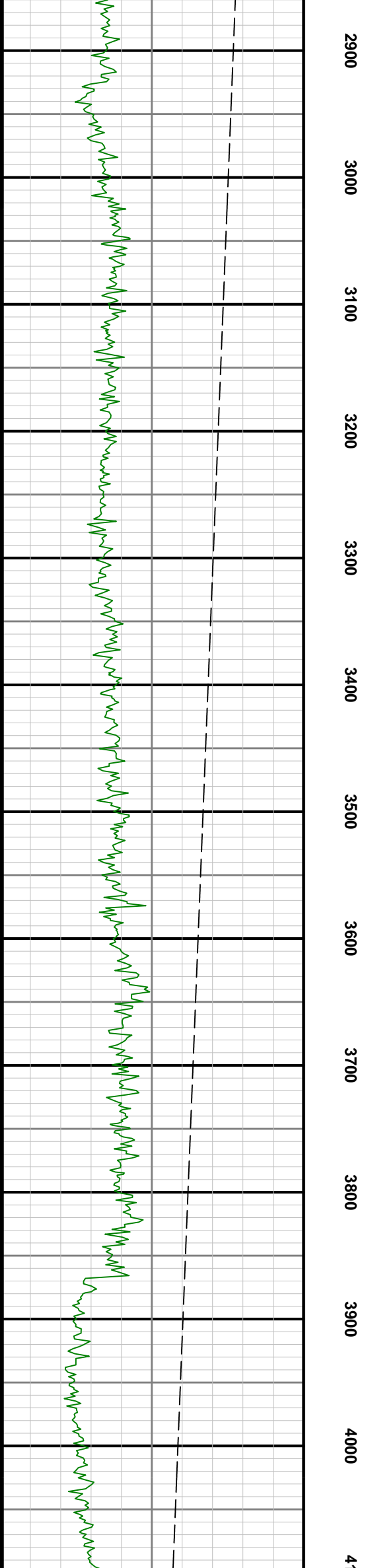
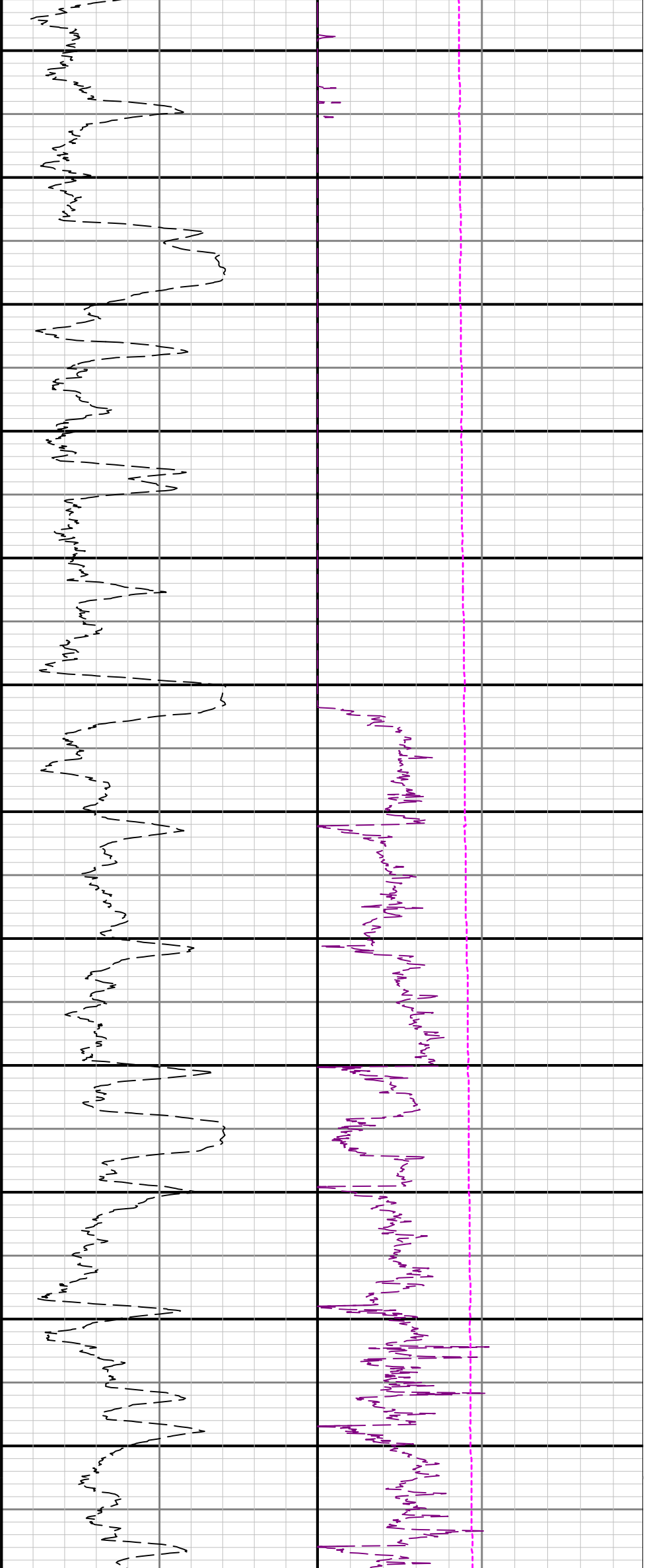
Presented Curves	Description	Units
ROPA	Depth Averaged ROP 10 ft Average	ft/h
TVD	True Vertical Depth	ft
WOB	Weight On Bit, Average 1 ft Average	klb
GRAM	Gamma Ray - Apparent - Memory 3 ft Average	API
TCDM	Directional Real-Time Survey Temperature	degF

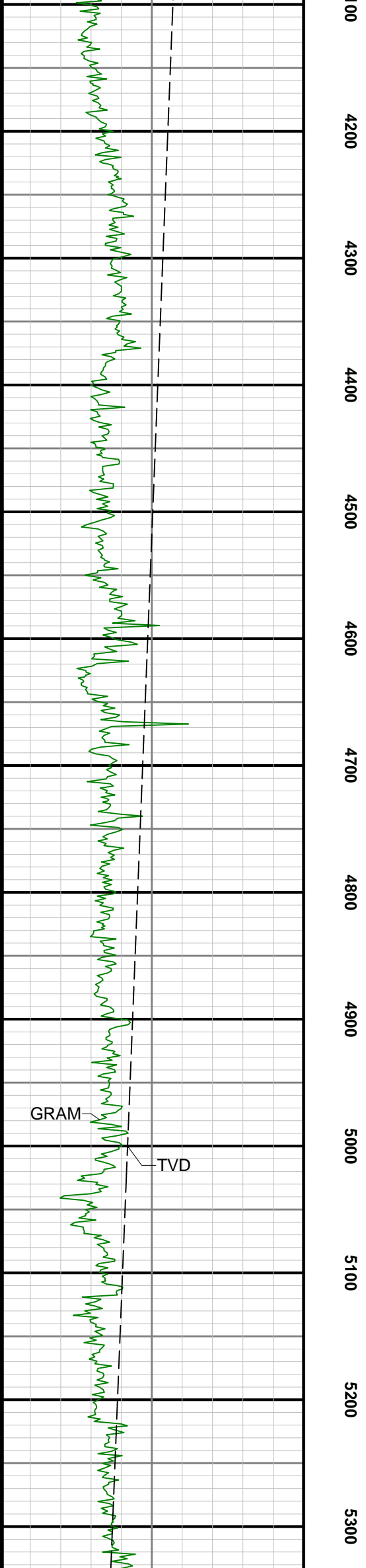
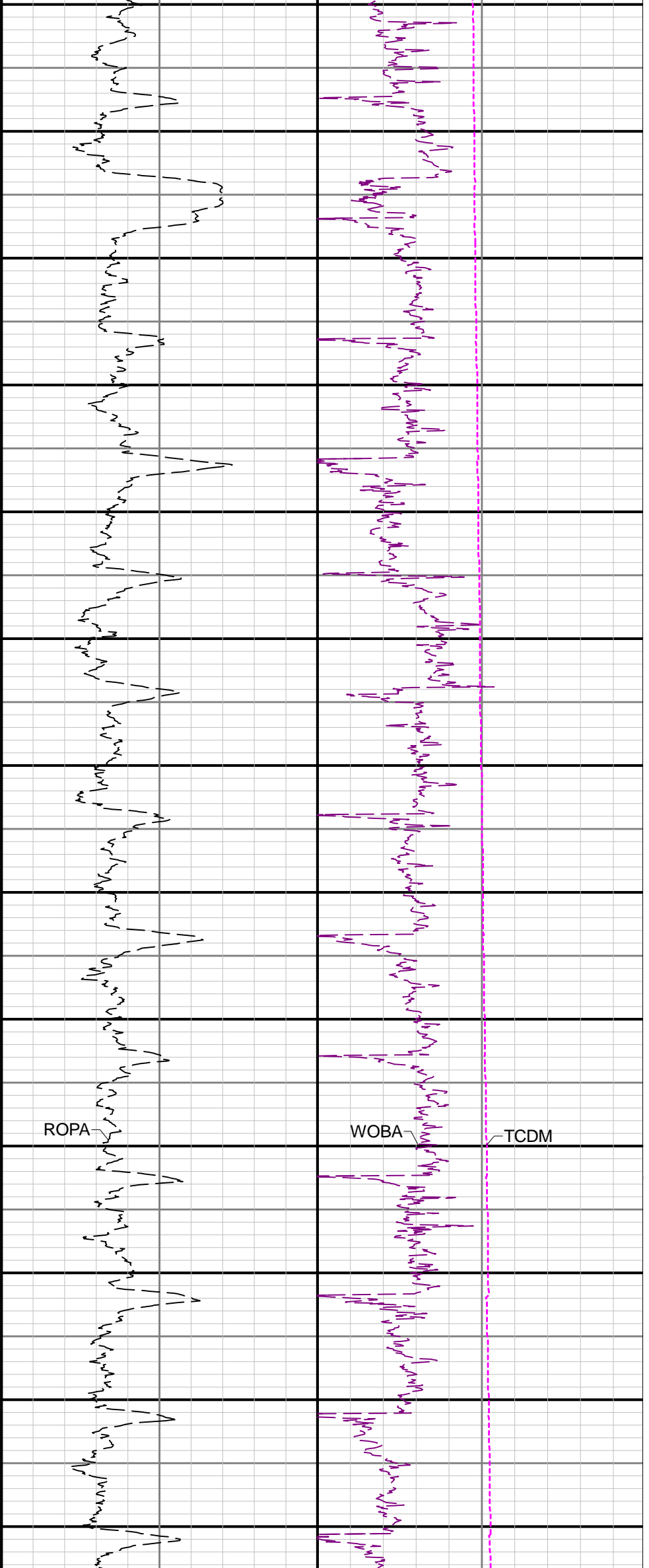
 	<b>Company</b>	Bayswater E&P LLC			
	<b>Well</b>	KTC Farms BA-35-36HN			
	<b>Interval</b>	<b>Date From:</b>	2018-09-11 15:40	<b>Top:</b>	1562.00 ft
		<b>Date To:</b>	2018-09-16 19:47	<b>Bottom:</b>	17293.00 ft
	<b>Created</b>	2018-09-16 20:15:24			

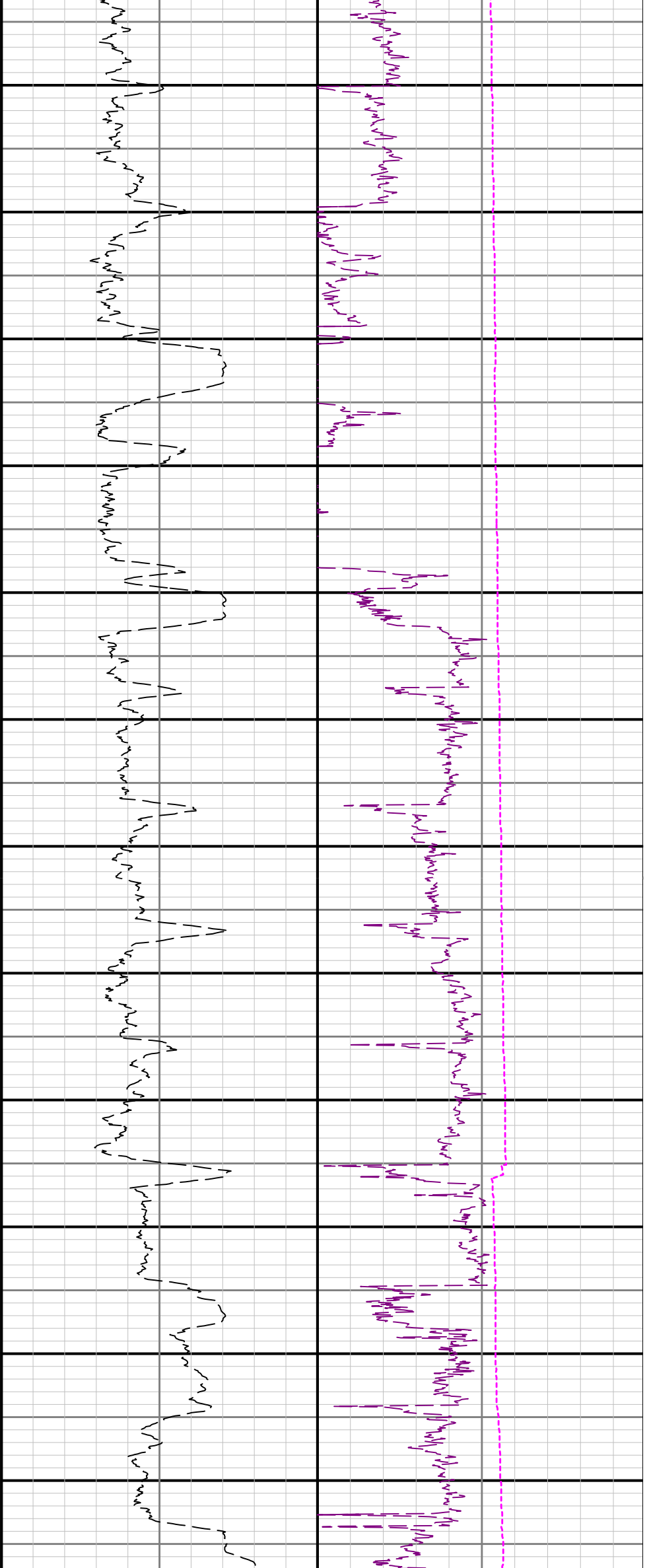
Gamma Ray - Apparent 3 ft Average GRAM		MD 1:1200 feet	Depth Averaged ROP 10 ft Average ROPA		Weight On Bit, Average 1 ft Average WOBA	
API			ft/h		klb	
True Vertical Depth TVD					Downhole Temperature TCDM	
7500      1500					degF	
ft						
		-100				
		0				
		100				
		200				
		300				











5400 5500 5600 5700 5800 5900 6000 6100 6200 6300 6400 6500

