

Inspection Photos

11/26/2018

Operator: H & M PETROLEUM CORPORATION #
10032

Location ID: 458288

Inspection Doc. Number: 682504209

Logan County, CO

Aaron Trujillo
NE Reclamation Specialist
COGCC

Inspection Photos
Operator: H & M PETROLEUM CORPORATION # 10032
Location ID: 458288



Photo 1: Photo taken from the access road north of the location, facing south. Photos 1-3 provide overview of the location from south, southeast to east.

Inspection Photos
Operator: H & M PETROLEUM CORPORATION # 10032
Location ID: 458288



Photo 2: See comments under photo 1. Photo also shows operator appears to be storing vehicles/equipment on an area north of the pad that has not been constructed. 1002.e requires that “well sites/access roads shall be adequately sized, constructed and maintained so as to reasonably...minimize erosion, alteration of natural features, removal of surface materials and degradation due to contamination”. Location does not appear to have been constructed in such a manner to be appropriate in size to store all vehicles/equipment.

Inspection Photos
Operator: H & M PETROLEUM CORPORATION # 10032
Location ID: 458288



Photo 3: See comments under photo 1 and photo 2. Photo shows vehicle traffic on adjacent lands.

Inspection Photos
Operator: H & M PETROLEUM CORPORATION # 10032
Location ID: 458288



Photo 4: Photo taken from the north end of the location, facing south. See comments under photo 2.

Inspection Photos
Operator: H & M PETROLEUM CORPORATION # 10032
Location ID: 458288



Photo 5: Photo taken from the north end of the location, facing west. See comments under photo 2.

Inspection Photos
Operator: H & M PETROLEUM CORPORATION # 10032
Location ID: 458288



Photo 6: Photo taken from the northeast of the location, facing southwest. See comments under photo 2.

Inspection Photos
Operator: H & M PETROLEUM CORPORATION # 10032
Location ID: 458288



Photo 7: Photo taken from the northeast of the location, facing west. See comments under photo 2.



Photo 8: Photo taken from the northeast of the location, facing east. See comments under photo 2. Photo shows vehicle traffic on adjacent lands.

Inspection Photos
Operator: H & M PETROLEUM CORPORATION # 10032
Location ID: 458288



Photo 9: Photo taken from the northeast end of the pad, facing west. Operator indicated that ~3 feet of soil will be brought onto the location to build up the pad. It does not appear as though 3 feet of soils have been brought on site. Photo also shows no perimeter stormwater and erosion control BMPs have been installed on the location in accordance with 1002.f



Photo 10: Photo taken from the northeast end of the pad, facing west. Photo shows soil excavated from the pit. 2A states pit to be 8 feet deep. Photo shows topsoil and subsoils do not appear to have been separated and stored or marked/documented. It appears that topsoil and subsoil horizons have all been placed into one soil stockpile. Photo also shows no perimeter stormwater and erosion control BMPs have been installed on the location in accordance with 1002.f



Photo 11: Photo taken from the east end of the location, facing northwest. See comments under photo 10.



Photo 12: Photo taken from the east end of the location, facing southwest. See comments under photo 10.



Photo 13: Photo taken from the southeast end of the location, facing north. See comments under photo 10.



Photo 14: Photo taken from the south end of the location, facing west. Photo shows areas where soil has been brought onto the location. It does not appear as though location has been built up by 3 feet as indicated by operator. Photo shows perimeter of the pad and the adjacent lands. Photo also shows no perimeter stormwater and erosion control BMPs have been installed on the location in accordance with 1002.f



Photo 15: Photo taken from the south end of the location, facing west. Photo shows areas where soil has been brought onto the location. It does not appear as though location has been built up by 3 feet as indicated by operator. Photo shows perimeter of the pad and the adjacent lands. Photo also shows no perimeter stormwater and erosion control BMPs have been installed on the location in accordance with 1002.f



Photo 16: Photo taken from the east end of the location. Photo shows areas where soil was brought in. It does not appear as though location has been built up by 3 feet as indicated by operator. Vegetation from the soil surface appears to be evident.

Inspection Photos
Operator: H & M PETROLEUM CORPORATION # 10032
Location ID: 458288

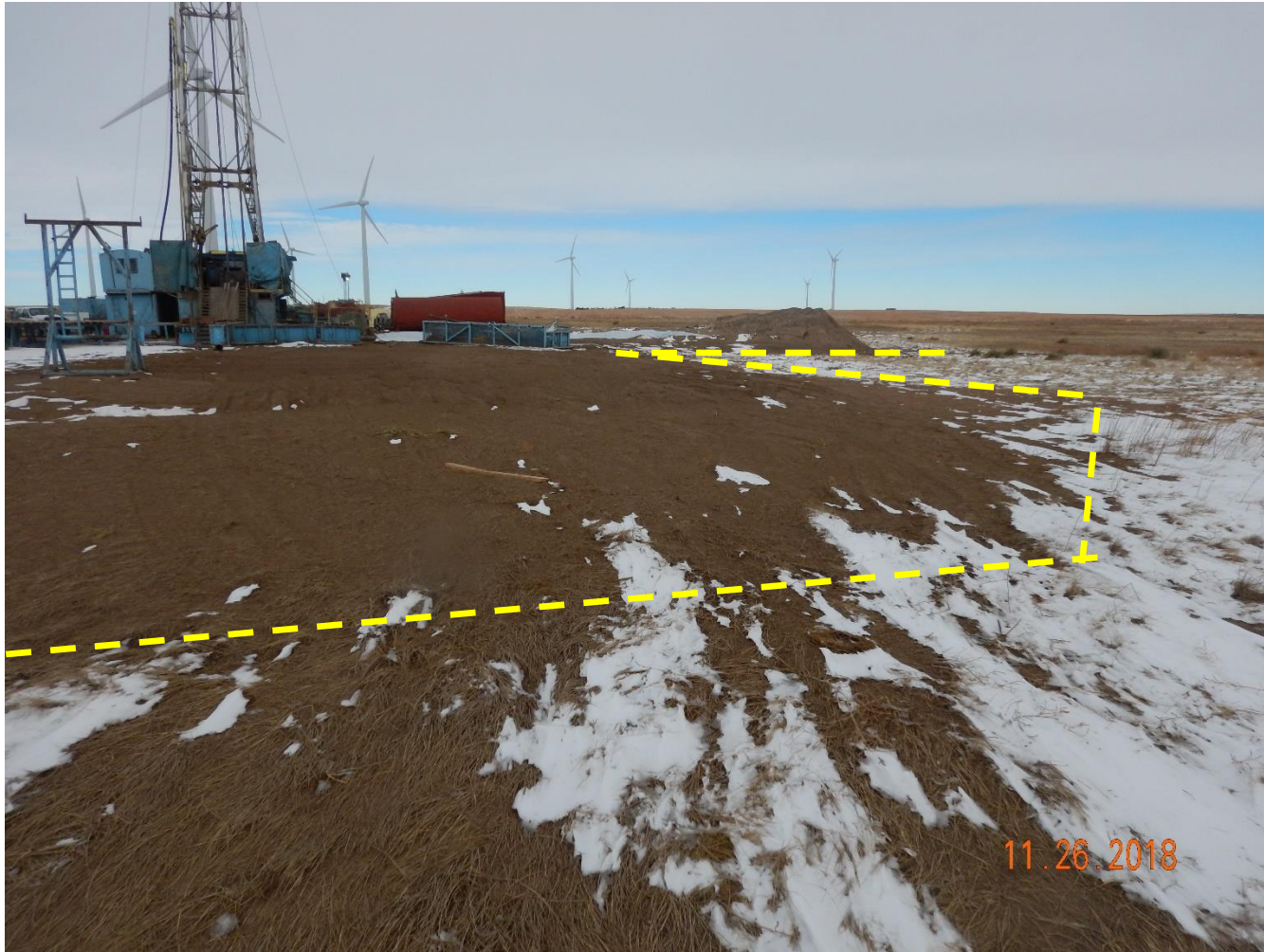


Photo 17: Photo taken from the south end of the location, facing north. See comments under photo 15.

Inspection Photos
Operator: H & M PETROLEUM CORPORATION # 10032
Location ID: 458288

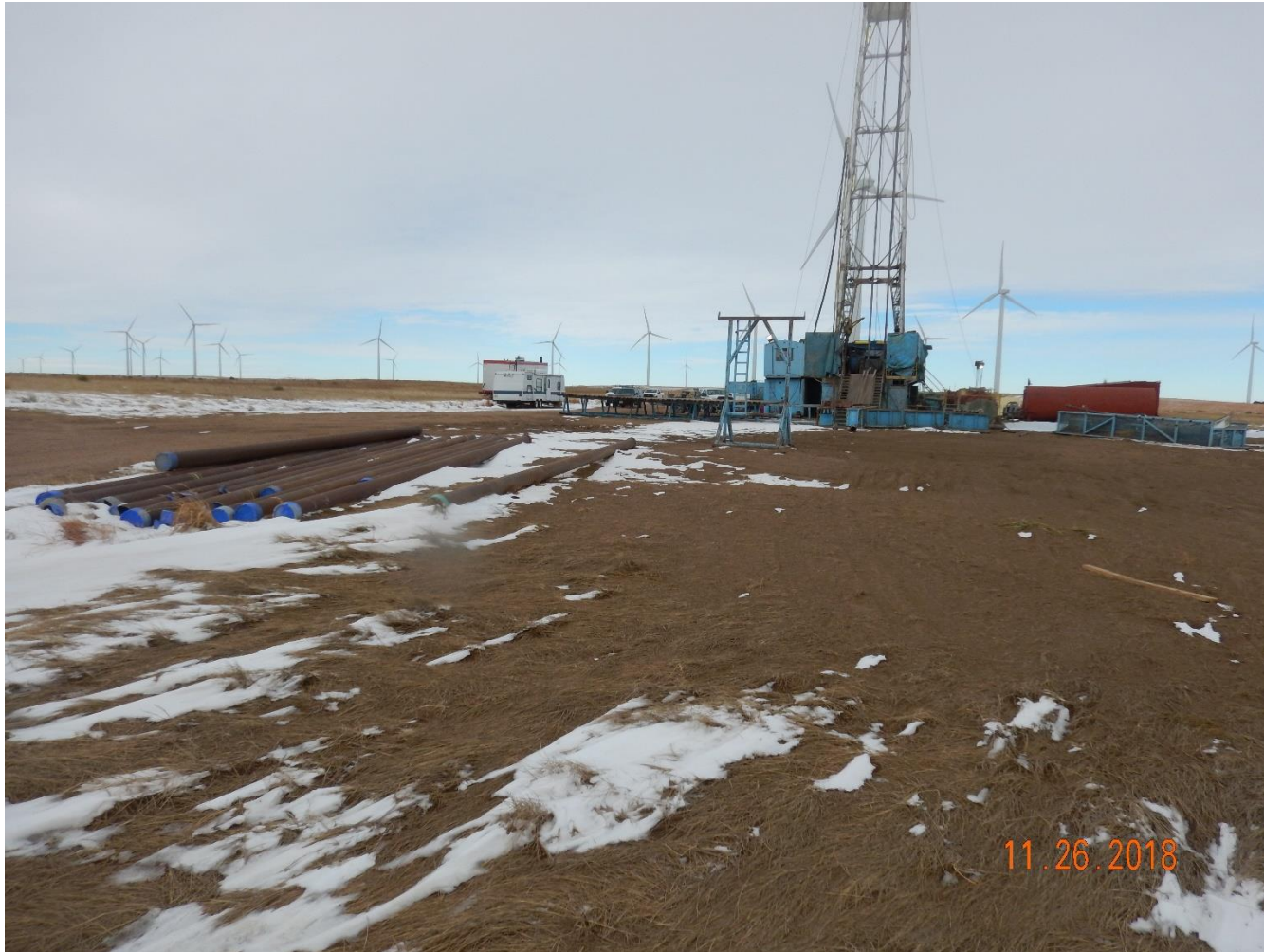


Photo 18: Photo taken from the south end of the location, facing northwest. See comments under photo 15.



Photo 19: Photo taken from the west end of the pad, facing east. Photo of the drill rig and various equipment.



Photo 20: Photo taken from the west end of the drill rig. Photo shows various materials/barrels that do not appear to be within sufficient containment. Plastic material does not appear to be thick/sturdy enough to tolerate abrasions/tears/cuts/etc...



Photo 21: Continued from photo 20. Photos shows barrels with insufficient secondary containment. This is improper materials management.



Photo 22: Photo taken from the southwest of the drill rig. Photo shows various buckets, barrels, gas cans without proper storage or secondary containment. This is improper materials management.

Inspection Photos
Operator: H & M PETROLEUM CORPORATION # 10032
Location ID: 458288



Photo 23: Photo taken from the south end of the drill rig, facing north.



Photo 24: Photo taken from the north end of the drill rig, facing south. Photo shows materials that appear to be properly stored.



Photo 25: Photo taken from the north end of the drill rig, facing south.

Inspection Photos
Operator: H & M PETROLEUM CORPORATION # 10032
Location ID: 458288



Photo 26: Photo taken from the northeast corner of the pit, facing west.



Photo 27: Photo taken from the northeast corner of the pit, facing south.



Photo 28: Photo taken from the southeast corner of the pit, facing north. See comments under photo 10



Photo 29: Photo taken from the south end of the drill rig facing north. See comments under photo 22



Photo 30: Continued from photo 29



Photo 31: Photo of drill rig.



Photo 32: Photo taken from the north end of the location. Photo shows the flag identifying “Buried Cable”.

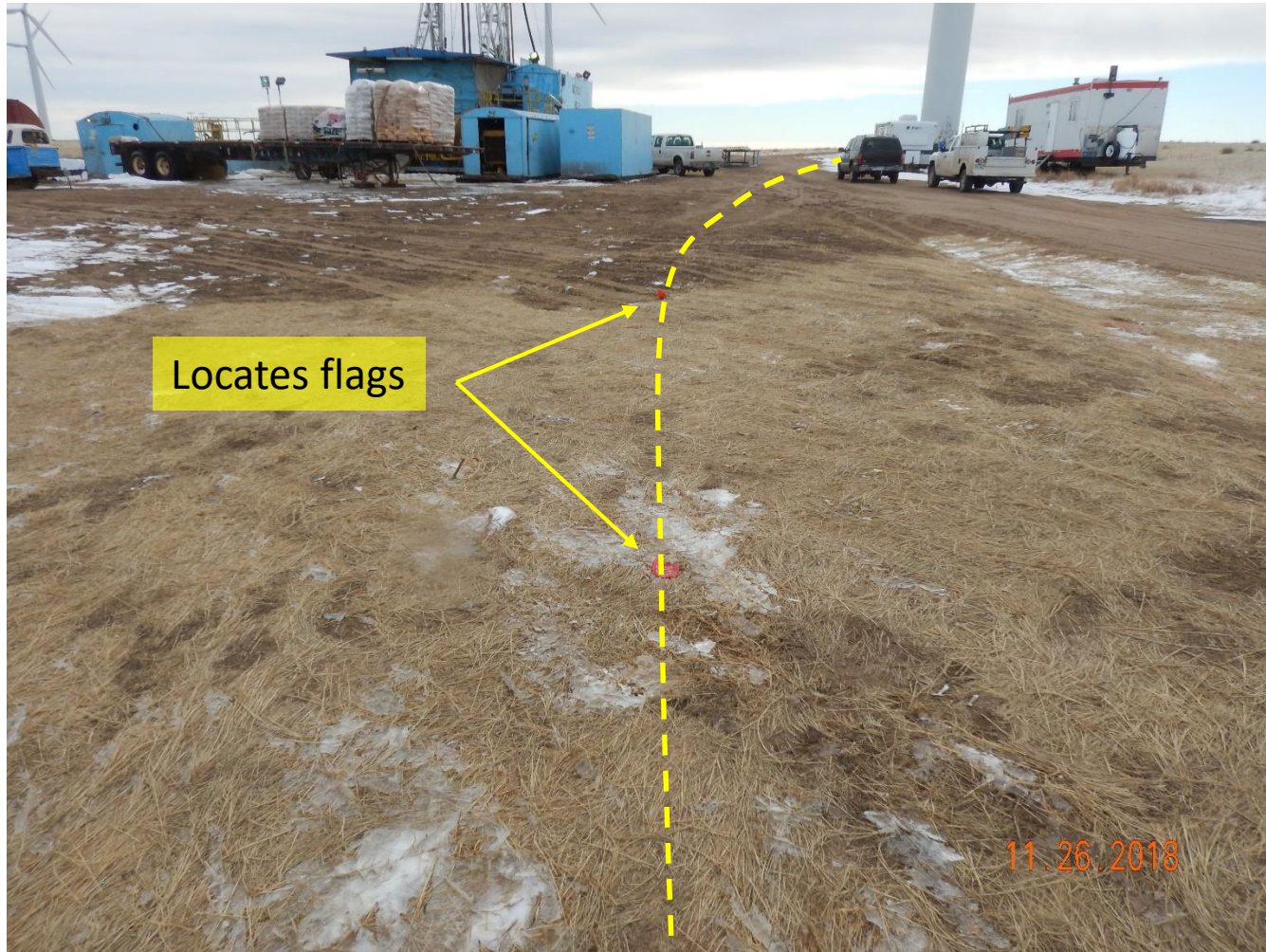


Photo 33: Photo taken from the north end of the location, facing south. Photo shows buried cable appears to travel south under the northwest corner of the pad, and then southwest under the access road towards the wind mill

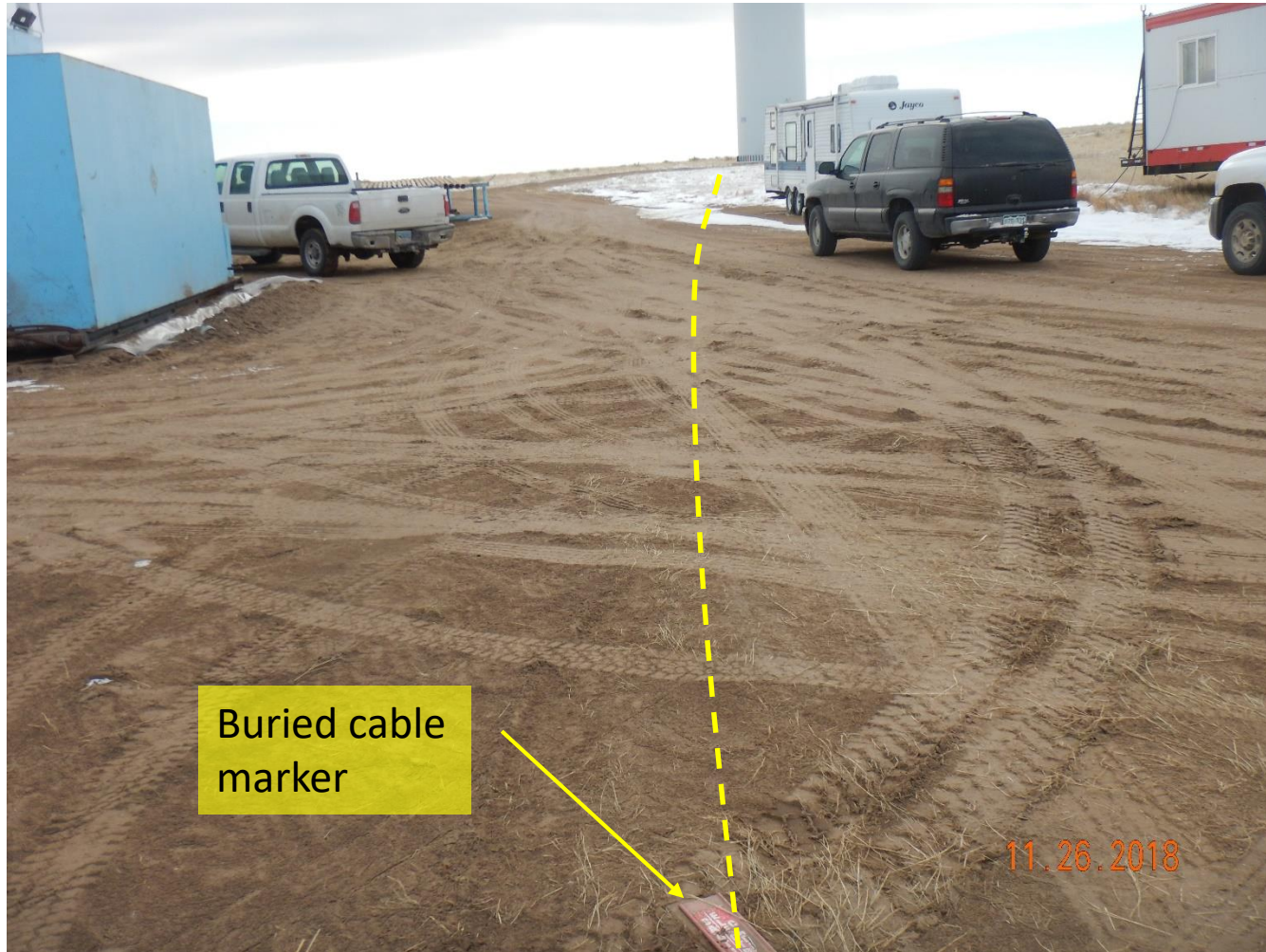


Photo 34: See comments under photo 33.



Photo 35: Buried cable sign seen at the bottom of photo 34.

Inspection Photos
Operator: H & M PETROLEUM CORPORATION # 10032
Location ID: 458288



Photo 36: See comments under photo 33

Inspection Photos
Operator: H & M PETROLEUM CORPORATION # 10032
Location ID: 458288



Photo 37: See comments under photo 33



Photo 38: Photo taken from the access road, north of the location facing west. Photo shows areas where soil that was brought onto the pad was salvaged from.



Photo 39: Photo taken from the access road, north of the location facing east. Photo shows areas where soil that was brought onto the pad was salvaged from.