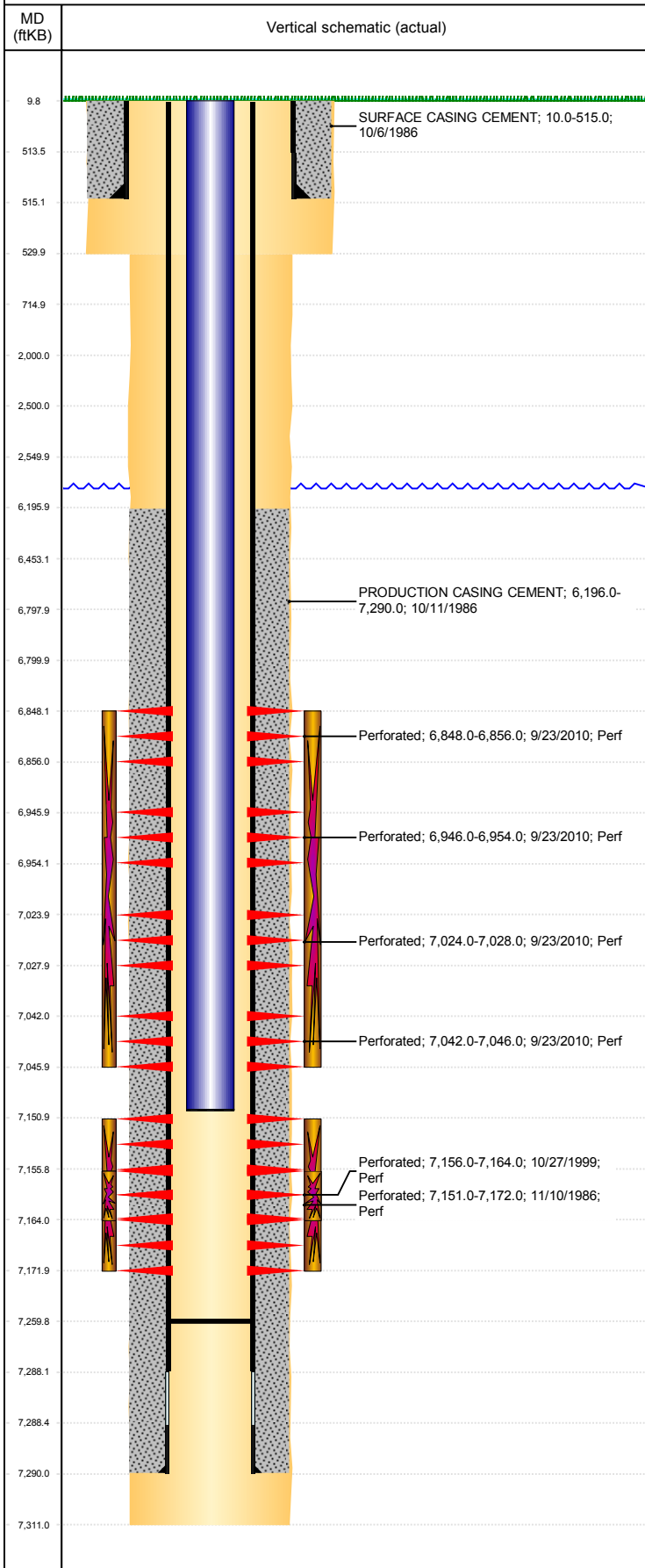


**Well Name: KNAUB-BETZ 2-14**

VERTICAL, ORIGINAL HOLE, 11/21/2018 12:30:28 PM



Well Header									
API 05-123-13180		Business Unit DJ BASIN		District 15		Well Config VERTICAL			
KB - GL / MSL (ft... 10.00		Spud Date 10/6/1986		P & A Date		Well Production Status SI			SoRT No
Comment DISCREPANCIES: SCHEMATIC/DRL RPT TD 7290'; CBL TD 7311'; PROD CSG SET DEPTH- ST 7302', DRL RPT 7290'. LITTLE INFO IN FILE FOR TRIFRAC/RECOMP, RECENT TAG NOT GIVEN. FIELD OPS NOTICE- FLOWLINES ABANDONED, RCVD 6/28/17. STATE SHOWS SHUT IN SINCE JUN 2016.									
Surface Location (Congressional)									
Qtr 3 NE	Qtr 4 NW	Section 14	Twnshp 4	Twnsh... N	Range 67	Rng E/... W	Actual Latitude (°) 40.31763780		Actual Longitude (°) -104.85974820
Wellbore Sections									
Section Des			Size (in)			Act Top, MD (ftKB)		Act Btm, MD (ftKB)	
SURFACE			12 1/4			10		530	
PRODUCTION			7 7/8			530		7,311	
Casing Strings									
Csg Des			Run Date		OD (in)	Wt/Len (lb/ft)	Grade	Top, MD (ftKB)	MD (ftKB)
Surface			10/6/1986		8 5/8	24.00		10.0	515.0
Production			10/11/1986		4 1/2	11.60	M-75	10.0	7,290.0
Cement									
Des					Start Date		Top (ftKB)		Btm (ftKB)
SURFACE CASING CEMENT					10/6/1986		10.0		515.0
PRODUCTION CASING CEMENT					10/11/1986		6,196.0		7,290.0
Zone Statuses									
Zone Name		Status Date	Status	Fluid Type	Job			Prod Method	
NIOBRARA		11/10/2013	PR	Water	TRI-FRAC & RECOMPLETE, 7/2/2010 00:00			Flowing	
NIOBRARA		10/7/2016	SI						
CODELL		11/8/2010	PR						
CODELL		11/10/2013	PR	Water				Flowing	
Perforation Data									
Linked Zone			Bnch/Stg	Entered Shot Total	Top (ftKB)		Btm (ftKB)		Date
NIOBRARA, ORIGINAL HOLE			A	16	6,848.00		6,856.00		9/23/2010
NIOBRARA, ORIGINAL HOLE			B	16	6,946.00		6,954.00		9/23/2010
NIOBRARA, ORIGINAL HOLE			C	8	7,024.00		7,028.00		9/23/2010
NIOBRARA, ORIGINAL HOLE			C	8	7,042.00		7,046.00		9/23/2010
CODELL, ORIGINAL HOLE				22	7,151.00		7,172.00		11/10/1986
CODELL, ORIGINAL HOLE				48	7,156.00		7,164.00		10/27/1999
Stimulation Intervals									
Zone					Start Date		Top (ftKB)		Btm (ftKB)
NIOBRARA, ORIGINAL HOLE					10/12/2010		6,848.0		7,046.0
CODELL, ORIGINAL HOLE					11/10/1986		7,151.0		7,172.0
CODELL, ORIGINAL HOLE					10/29/1999		7,156.0		7,164.0
CODELL, ORIGINAL HOLE					10/12/2010		7,156.0		7,164.0
Other In Hole									
Run Date		Des				OD (in)	Top (ftKB)		Btm (ftKB)
Logs									
Date		Type					Top, MD (ftKB)		Btm, MD (ftKB)
10/11/1986		COMPENSATED DENSITY					4,500.0		7,309.0
10/11/1986		INDUCTION					515.0		7,309.0
11/5/1986		CEMENT BOND					6,020.0		7,207.0
Plug Back Total Depths									
Date		Type		Com					Depth (ftKB)
11/5/1986		FILL		DEPTH LOGGER ON CBL					7,210.0
11/2/1999		FILL		CLEANED OUT TO LAND TUBING					7,260.0