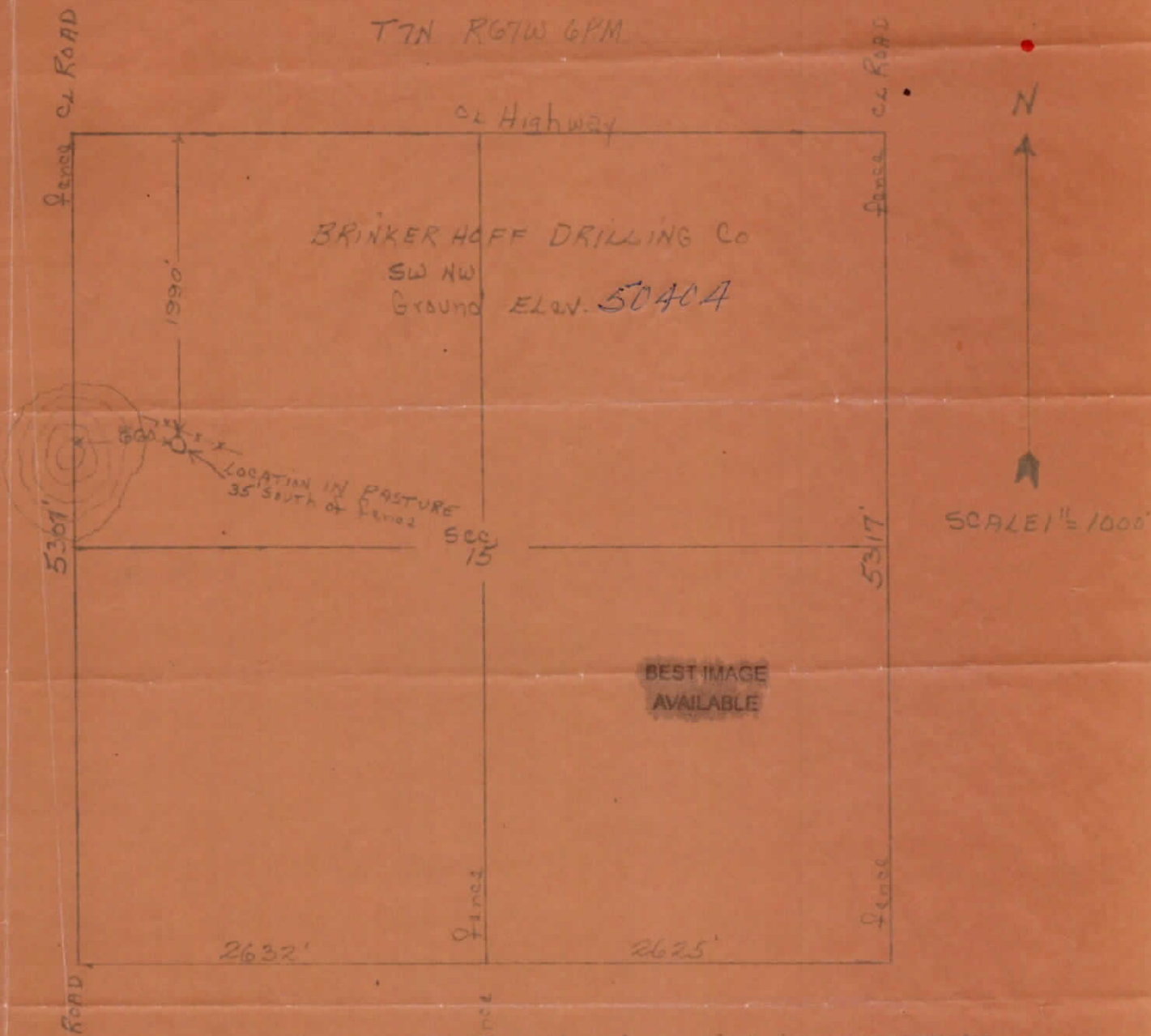




CERTIFICATE OF SURVEY  
for  
Brinkerhoff Drilling Co.  
Weld County, Colorado



I hereby certify that the above plat is an accurate representation of a correct survey showing the location of Brinkerhoff Drilling Co. No. 1 Oilwell in SWNW Sec. 15 T7N R67W 6PM. The elevation of the ground at the stake is 5040.4 feet above sea level from U.S.C.&G. Bench Mark.

Fort Morgan, Colorado  
July 24, 1958.

Registered Professional Engineer  
State of Colorado.



MISSION