



Lat40°, Inc. 6250 W. 10th Street, Unit 2, Greeley, CO 970-515-5294

ACCESS ROAD MAP

LATHAM U-14 PAD

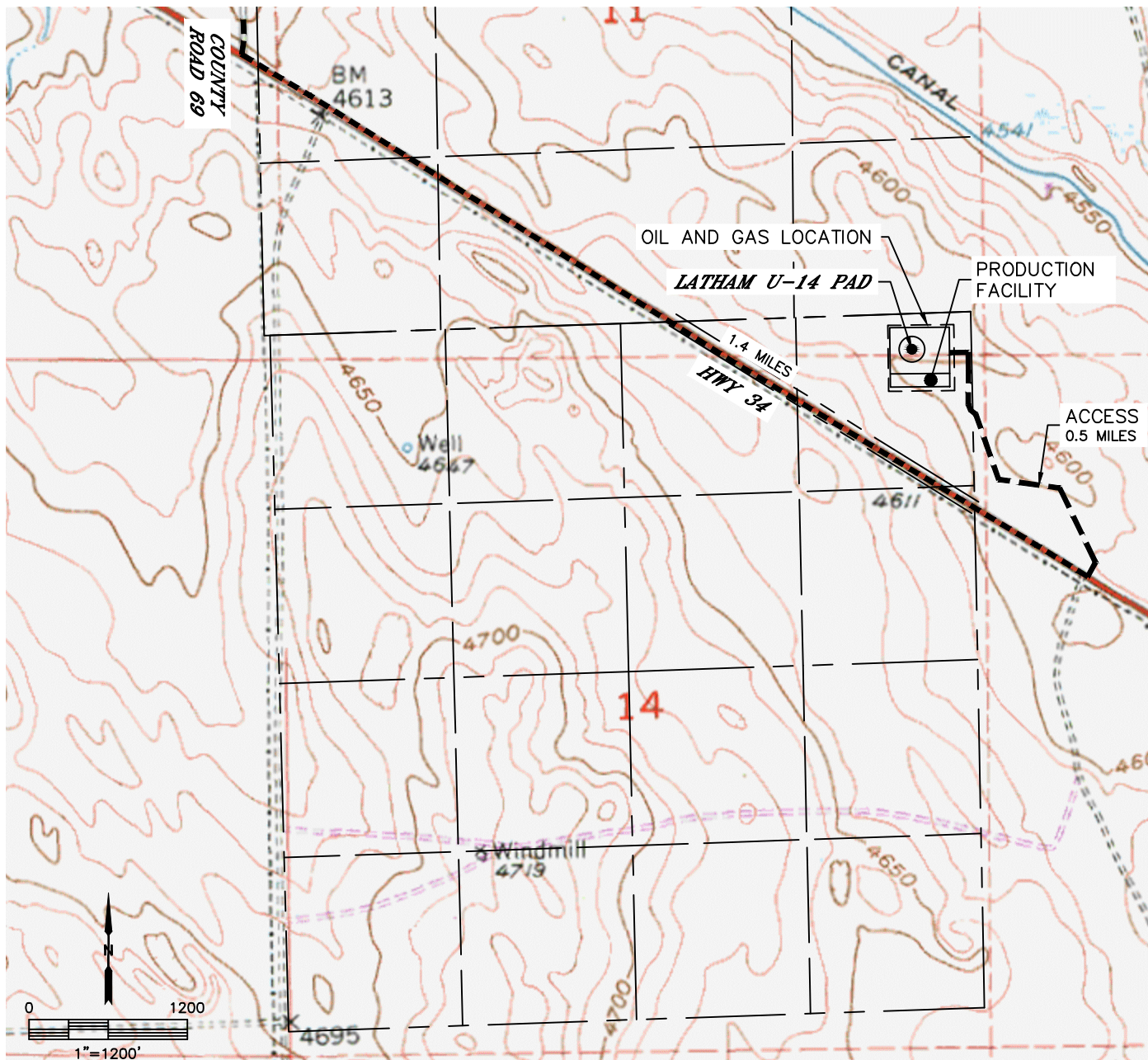
SECTION: 14
TOWNSHIP: 4N
RANGE: 63W
6TH. P.M.
WELD COUNTY, CO

PROPOSED WELLS:

LATHAM E14-A11-12HNB	LATHAM K31-O34-14HNB
LATHAM 14-11-12HNC	LATHAM K-O-14HNC
LATHAM J-F-12HNC	LATHAM K21-O24-14HNB
LATHAM U41-Y44-14HNB	LATHAM 21-24-14HNC
LATHAM 41-44-14HNC	LATHAM F21-J24-14HNB
LATHAM P41-T44-14HNB	LATHAM F-J-14HNC
LATHAM P-T-14HNC	LATHAM F11-J14-14HNB
LATHAM P31-T34-14HNB	LATHAM 11-14-14HNC
LATHAM 31-34-14HNC	LATHAM A11-E14-14HNB

DRIVING DIRECTIONS TO LATHAM E14-A11-12HNB

FROM THE INTERSECTION OF COUNTY ROAD 69 AND HIGHWAY 34 DRIVE SOUTHEAST ALONG SAID HIGHWAY 34 FOR 1.4 MILES TO THE PROPOSED ACCESS ROAD, TURN LEFT ONTO THE SAID PROPOSED ACCESS ROAD AND CONTINUE NORTHWEST FOR 0.5 MILES TO THE LATHAM U-14 PAD ON THE WEST SIDE OF THE ROAD.





Lat40°, Inc. 6250 W. 10th Street, Unit 2, Greeley, CO 970-515-5294

ACCESS ROAD MAP

LATHAM U-14 PAD

SECTION: 14
TOWNSHIP: 4N
RANGE: 63W
6TH. P.M.
WELD COUNTY, CO

