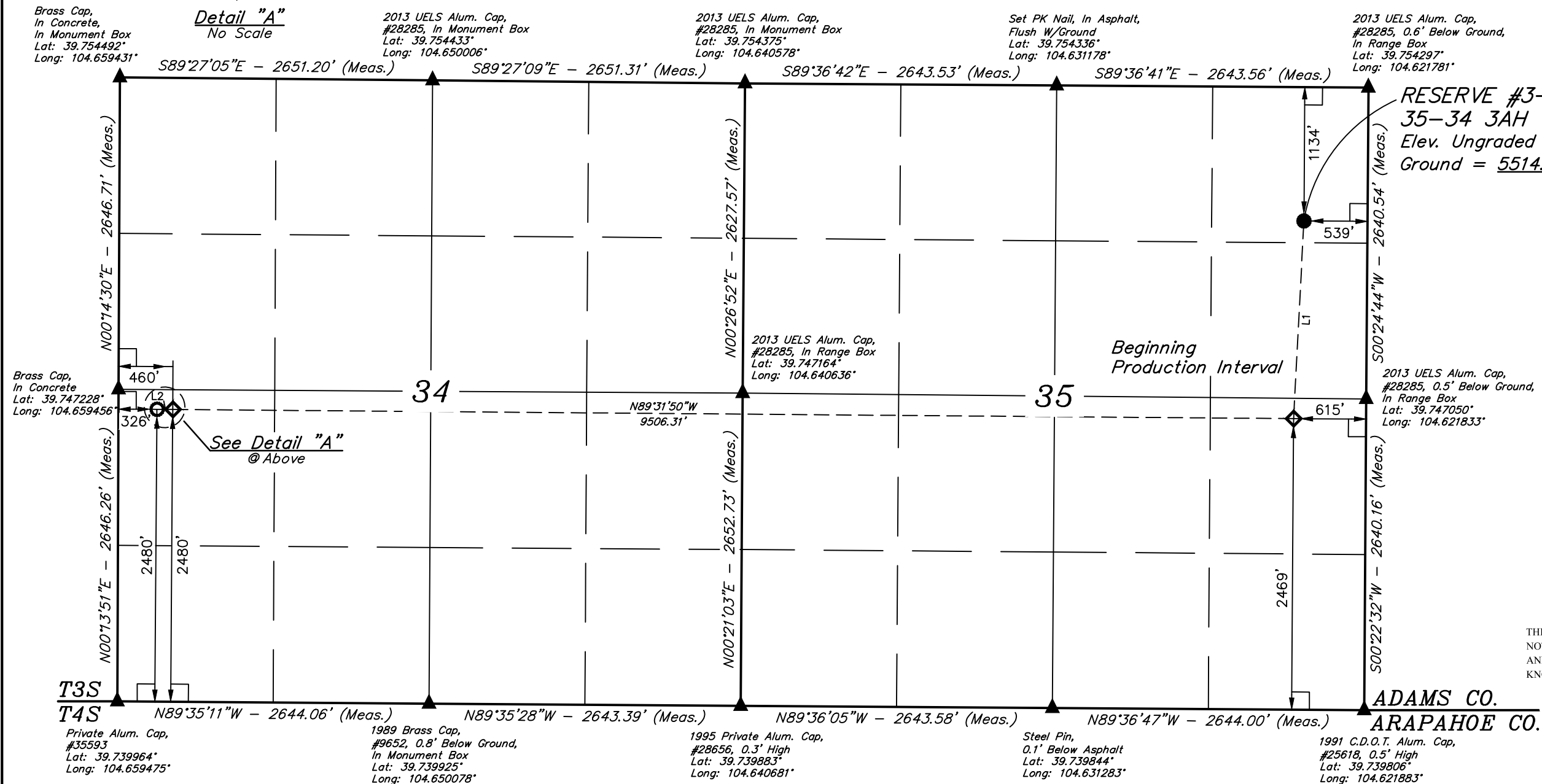
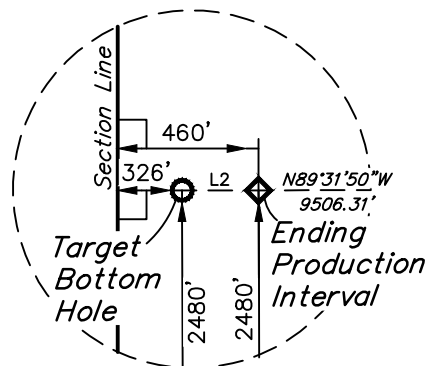


ConocoPhillips Company

RESERVE #3-65 35-34 3AH
NE 1/4 NE 1/4, SECTION 35, T3S, R65W, 6th P.M.
ADAMS COUNTY, COLORADO

BASIS OF BEARINGS
BASIS OF BEARINGS IS A G.P.S. OBSERVATION

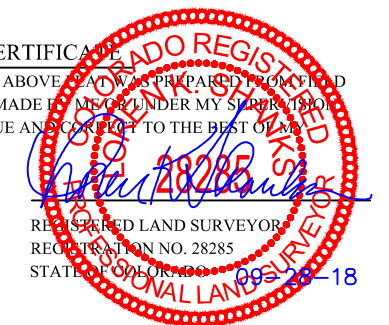
BASIS OF ELEVATION
BENCHMARK 374 LOCATED ON THE SECTION LINE BETWEEN
SECTIONS 12 & 13, T5S, R64W, 6th. P.M., TAKEN FROM 1988
PUBLISHED DATUM BY THE UNITED STATES DEPARTMENT OF
THE INTERIOR, GEOLOGICAL SURVEY AS BEING 6054.61 FEET.








LINE TABLE		
LINE	DIRECTION	LENGTH
L1	S02°59'37"W	1679.26'
L2	N89°27'05"W	134.00'

CERTIFICATE

THIS IS TO CERTIFY THAT THE ABOVE DEED WAS PREPARED FROM THE
NOTES OF ACTUAL SURVEYS MADE BY ME OR UNDER MY SUPERVISION,
AND THAT THE SAME ARE TRUE AND ACCURATE TO THE BEST OF MY
KNOWLEDGE AND BELIEF.



PDOP = 2.0

 = 90° SYMBOL
 = PROPOSED WELLHEAD.
 = TARGET BOTTOM HOLE.
 = LANDING POINT.
 = SECTION CORNERS LOCATED. (NAD 83)

NAD 83 (SURFACE LOCATION)	NAD 83 (BEG. PROD. INTERVAL)	NAD 83 (ENDING PROD. INTERVAL)	NAD 83 (TARGET BOTTOM HOLE)
LATITUDE = 39°45'04.29" (39.751193°)	LATITUDE = 39°44'47.72" (39.746590°)	LATITUDE = 39°44'48.35" (39.746763°)	LATITUDE = 39°44'48.34" (39.746766°)
LONGITUDE = 104°37'25.39" (104.623720°)	LONGITUDE = 104°37'26.49" (104.624024°)	LONGITUDE = 104°39'28.15" (104.657821°)	LONGITUDE = 104°39'29.87" (104.658297°)
NAD 27 (SURFACE LOCATION)	NAD 27 (BEG. PROD. INTERVAL)	NAD 27 (ENDING PROD. INTERVAL)	NAD 27 (TARGET BOTTOM HOLE)
LATITUDE = 39°45'04.34" (39.751206°)	LATITUDE = 39°44'47.77" (39.746603°)	LATITUDE = 39°44'48.39" (39.746776°)	LATITUDE = 39°44'48.40" (39.746779°)
LONGITUDE = 104°37'23.51" (104.623198°)	LONGITUDE = 104°37'24.61" (104.623501°)	LONGITUDE = 104°39'26.27" (104.657297°)	LONGITUDE = 104°39'27.98" (104.657773°)
STATE PLANE NAD 83 (CO. NORTH)	STATE PLANE NAD 83 (CO. NORTH)	STATE PLANE NAD 83 (CO. NORTH)	STATE PLANE NAD 83 (CO. NORTH)
N: 1153430.96 E: 3246384.50	N: 1151753.59 E: 3246315.67	N: 1151724.69 E: 3236812.14	N: 1151724.47 E: 3236678.18
STATE PLANE NAD 27 (CO. NORTH)	STATE PLANE NAD 27 (CO. NORTH)	STATE PLANE NAD 27 (CO. NORTH)	STATE PLANE NAD 27 (CO. NORTH)
N: 153434.44 E: 2246537.83	N: 151757.09 E: 2246469.03	N: 151728.05 E: 2236965.59	N: 151727.83 E: 2236831.62



UELS, LLC
Corporate Office * 85 South 200 East
Vernal, UT 84078 * (435) 789-1017

SURVEYED BY	C.M., O.R.	09-04-18	SCALE
DRAWN BY	K.A.	09-25-18	1" = 1000'

WELL LOCATION PLAT