

T3S, R65W, 6th P.M.

ConocoPhillips Company

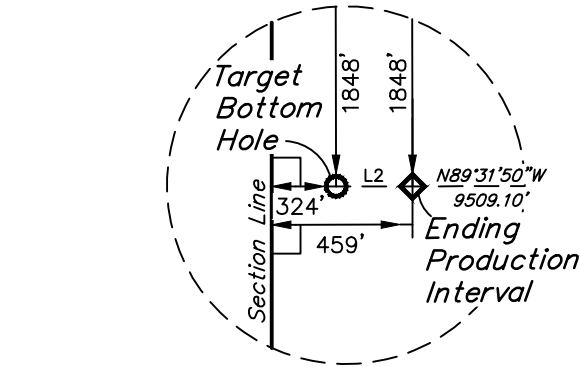
RESERVE #3-65 35-34 2BH
NE 1/4 NE 1/4, SECTION 35, T3S, R65W, 6th P.M.
ADAMS COUNTY, COLORADO

BASIS OF BEARINGS

BASIS OF BEARINGS IS A G.P.S. OBSERVATION

BASIS OF ELEVATION

BENCHMARK 374 LOCATED ON THE SECTION LINE BETWEEN
SECTIONS 12 & 13, T5S, R64W, 6th. P.M., TAKEN FROM 1988
PUBLISHED DATUM BY THE UNITED STATES DEPARTMENT OF
THE INTERIOR, GEOLOGICAL SURVEY AS BEING 6054.61 FEET.



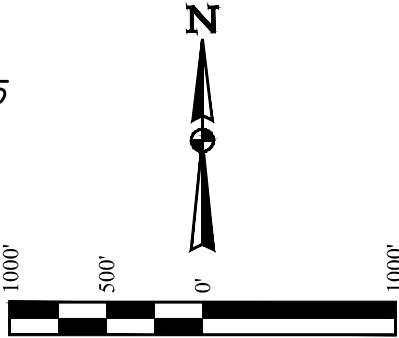
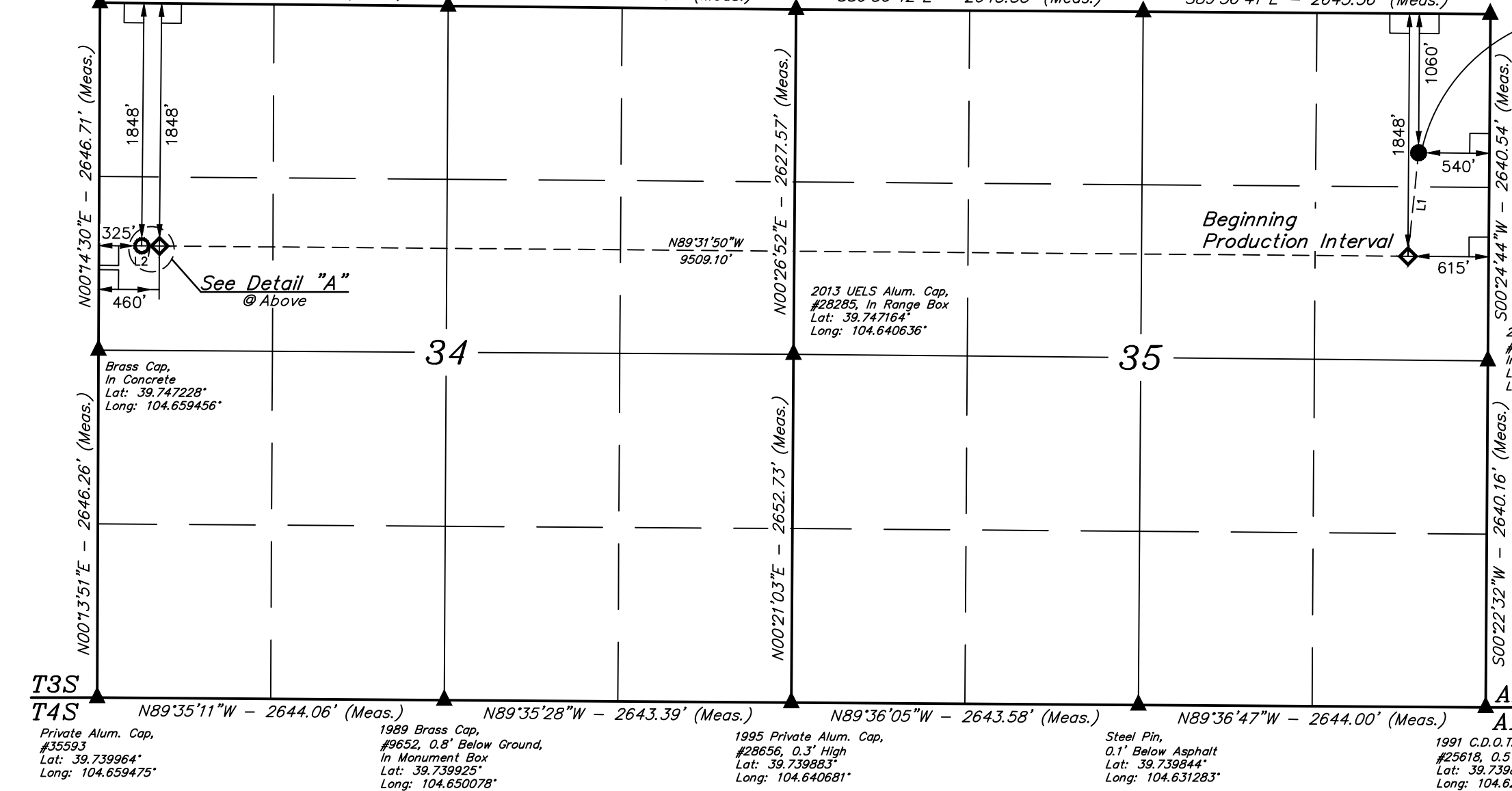
Brass Cap, In Concrete, In Monument Box
Lat: 39.754492°
Long: 104.659431°

2013 UELS Alum. Cap, #28285, In Monument Box
Lat: 39.754433°
Long: 104.650006°

2013 UELS Alum. Cap, #28285, In Monument Box
Lat: 39.754375°
Long: 104.640578°

Set PK Nail, In Asphalt, Flush W/Ground
Lat: 39.754336°
Long: 104.631178°

2013 UELS Alum. Cap, #28285, 0.6' Below Ground, In Range Box
Lat: 39.754297°
Long: 104.621781°



LINE TABLE		
LINE	DIRECTION	LENGTH
L1	S05°51'56\"W	792.10'
L2	N89°27'05\"W	135.00'

CERTIFICATE OF ACCURACY
THIS IS TO CERTIFY THAT THE ABOVE MAP WAS PREPARED FROM FIELD NOTES OF ACTUAL SURVEYS MADE BY ME OR UNDER MY SUPERVISION AND THAT THE SAME ARE TRUE AND CORRECT TO THE BEST OF MY KNOWLEDGE AND BELIEF.



PDOP = 2.0

LEGEND:
= 90° SYMBOL
● = PROPOSED WELLHEAD.
○ = TARGET BOTTOM HOLE.
◇ = LANDING POINT.
▲ = SECTION CORNERS LOCATED. (NAD 83)

NAD 83 (SURFACE LOCATION)	NAD 83 (BEG. PROD. INTERVAL)	NAD 83 (ENDING PROD. INTERVAL)	NAD 83 (TARGET BOTTOM HOLE)
LATITUDE = 39°45'05.03\" (39.751398°)	LATITUDE = 39°44'57.25\" (39.749235°)	LATITUDE = 39°44'57.87\" (39.749409°)	LATITUDE = 39°44'57.88\" (39.749412°)
LONGITUDE = 104°37'25.39\" (104.623721°)	LONGITUDE = 104°37'26.42\" (104.624005°)	LONGITUDE = 104°39'28.12\" (104.657812°)	LONGITUDE = 104°39'29.85\" (104.658292°)
NAD 27 (SURFACE LOCATION)	NAD 27 (BEG. PROD. INTERVAL)	NAD 27 (ENDING PROD. INTERVAL)	NAD 27 (TARGET BOTTOM HOLE)
LATITUDE = 39°45'05.08\" (39.751411°)	LATITUDE = 39°44'57.30\" (39.749249°)	LATITUDE = 39°44'57.92\" (39.749422°)	LATITUDE = 39°44'57.93\" (39.749425°)
LONGITUDE = 104°37'23.51\" (104.623198°)	LONGITUDE = 104°37'24.53\" (104.623482°)	LONGITUDE = 104°39'26.24\" (104.657288°)	LONGITUDE = 104°39'27.97\" (104.657768°)
STATE PLANE NAD 83 (CO. NORTH)	STATE PLANE NAD 83 (CO. NORTH)	STATE PLANE NAD 83 (CO. NORTH)	STATE PLANE NAD 83 (CO. NORTH)
N: 1153505.89 E: 3246383.73	N: 1152717.31 E: 3246311.66	N: 1152688.40 E: 3236805.35	N: 1152688.18 E: 3236670.39
STATE PLANE NAD 27 (CO. NORTH)	STATE PLANE NAD 27 (CO. NORTH)	STATE PLANE NAD 27 (CO. NORTH)	STATE PLANE NAD 27 (CO. NORTH)
N: 153509.37 E: 2246537.06	N: 152720.79 E: 2246465.00	N: 152691.75 E: 2236958.78	N: 152691.52 E: 2236823.82



UELS, LLC
Corporate Office * 85 South 200 East
Vernal, UT 84078 * (435) 789-1017

SURVEYED BY	C.M., O.R.	09-04-18	SCALE
DRAWN BY	K.A.	09-25-18	1\" = 1000'

WELL LOCATION PLAT