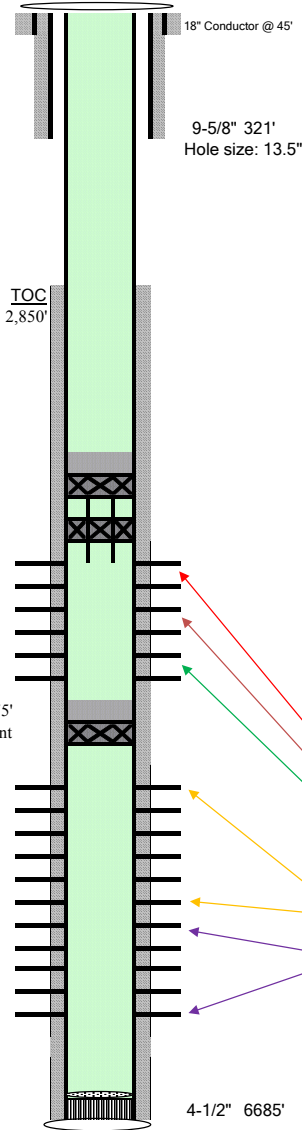


BARRETT #GM 14-36

Current WBD (TA Status)



Well Name
Location
Field
County
API
Elevation

BARRETT #GM 14-36
SWSW 36 6S96W 6 PM
Grand Valley - #31290
Garfield, CO
05-045-07501
5423'

Footages

600 FSL, 220 FWL

Spud 05/12/2000

Conductor Casing	45'	18"	
Surf Casing	321'	9-5/8"	32.3#
Cement	225 sx		

Prod Casing	6685'	4-1/2"	11.6# 1-80
Cement	Lead: 300 sx Tail: 525 sx	12.5# 25/75 Poz 14.2# 50/50 Poz	

CIBP w/ 2 sx cement	3540'
2 3/8" Tbg. Pup w/ CIBP	3556'
TEAM Arrowset Packer	3560'
EOT	3567.08'
<i>*All items are internally plastic coated</i>	
CIBP w/ 3 sx cement	4,575'

TOC 2,850'

Injection Intervals	Depth
MV3	3622'-3880'
MV2	3941'-4260'
MV1	4294'-4471'

Production Intervals	Depth
MV	4704'-6091'
Cameo	6245'-6593'

Prepared By: Tyler Gillam
office phone: (832)726-1191
cell phone: (936)520-8434

Revision Date:
11/2/2018