

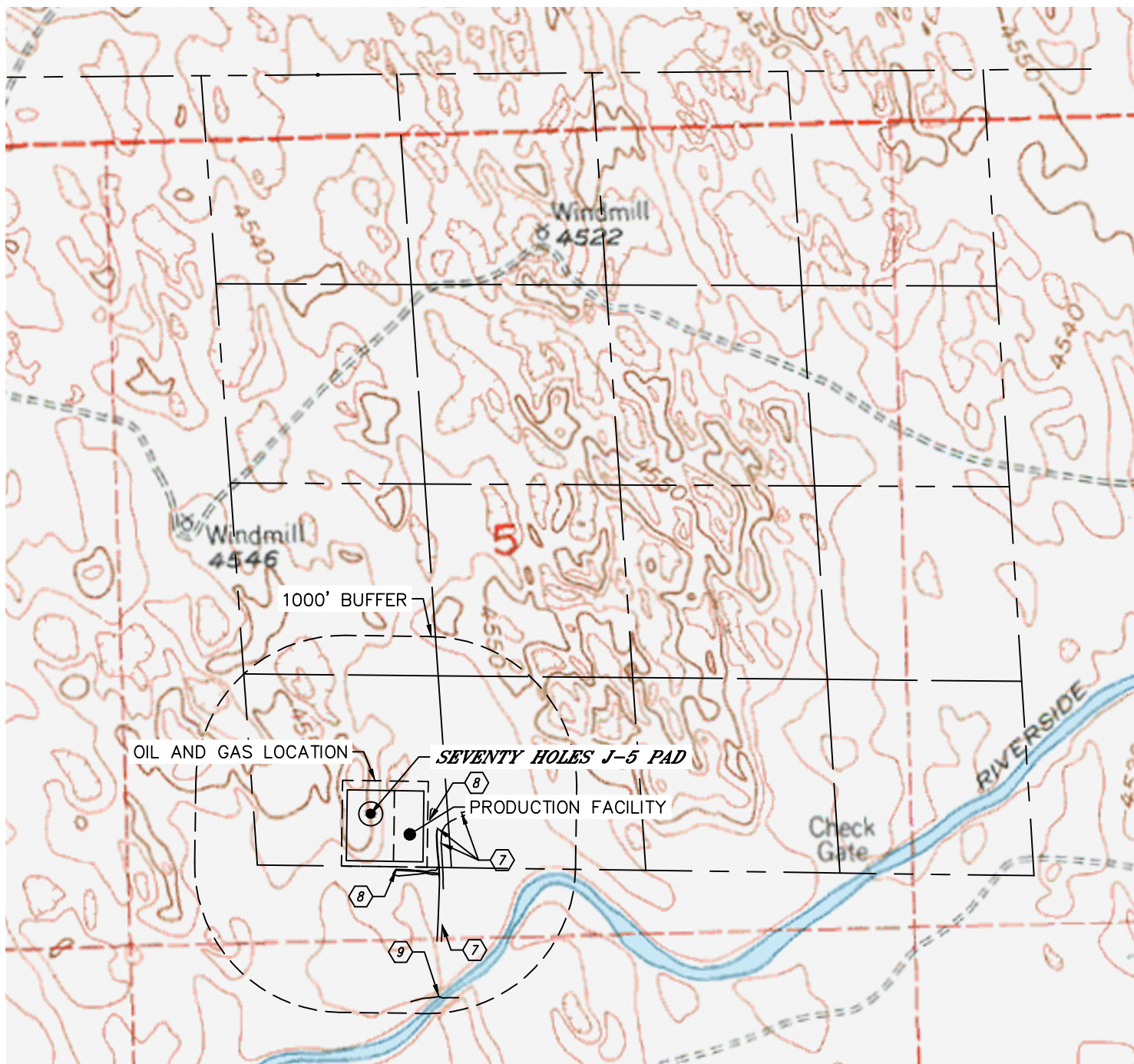


Lat40°, Inc. 6250 W. 10th Street, Unit 2, Greeley, CO 970-515-5294

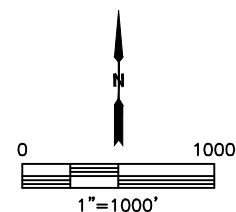
HYDROLOGY MAP

SEVENTY HOLES J-5

SECTION: 5
TOWNSHIP: 4N
RANGE: 62W
6TH. P.M.
WELD COUNTY, CO



- ⑦ BARROW DITCH 69', 93' & 229' E, 407' SE
- ⑧ DITCH 15' E, 23' S
- ⑨ SOUTH PLATTE RIVER 880' SE



NEAREST DOWN GRADIENT SURFACE WATER: DITCH 15' E

DATE: 10/16/2018
PROJECT#: 2018117