



Lat40°, Inc. 6250 W. 10th Street, Unit 2, Greeley, CO 970-515-5294

ACCESS ROAD MAP

SEVENTY HOLES J-5

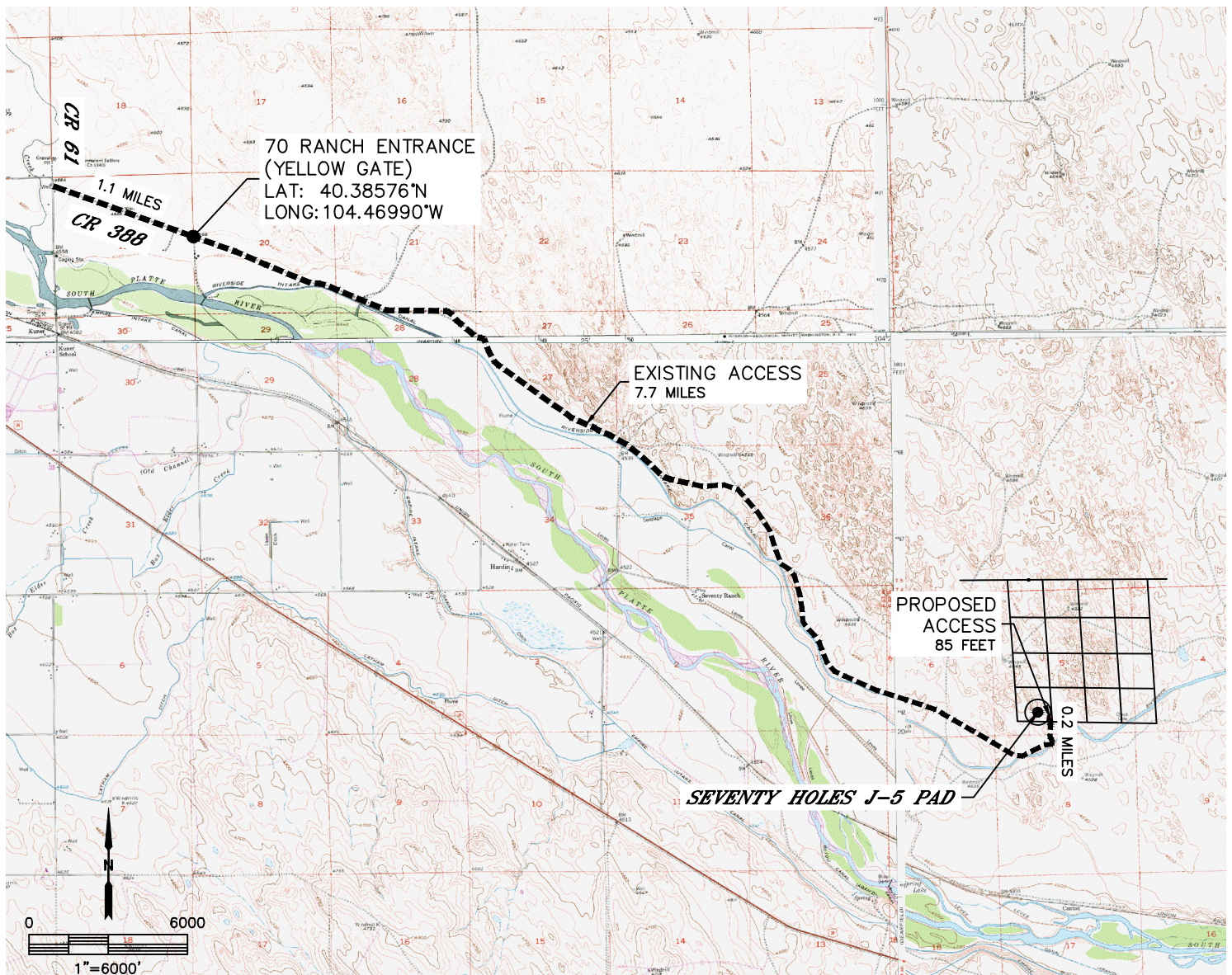
SECTION: 5
TOWNSHIP: 4N
RANGE: 62W
6TH. P.M.
WELD COUNTY, CO

PROPOSED WELLS:

STATE SEVENTY HOLES O-K-5HNB
STATE SEVENTY HOLES 24-21-5HNB
STATE SEVENTY HOLES J14-F11-5HNB
STATE SEVENTY HOLES 14-11-5HNB
STATE SEVENTY HOLES K-8-17MRLNB
STATE SEVENTY HOLES K21-O24-8HNB
STATE SEVENTY HOLES 21-24-8HNB
STATE SEVENTY HOLES 11-14-8HNB
STATE SEVENTY HOLES A11-E14-8HNB

DRIVING DIRECTIONS TO SEVENTY HOLES J-5 PAD

FROM THE INTERSECTION OF COUNTY ROAD 61 AND COUNTY ROAD 388, DRIVE SOUTHEAST ON COUNTY ROAD 388 FOR 1.1 MILES TO THE 70 RANCH MAIN ACCESS (YELLOW GATE), CONTINUE SOUTHEAST ALONG MAIN ACCESS ROAD FOR 7.7 MILES, DRIVE NORTH ALONG EXISTING ACCESS ROAD FOR 0.2 MILES, DRIVE WEST FOR 85 FEET TO THE SEVENTY HOLES J-5 PAD ON THE WEST SIDE OF THE ROAD.





Lat40°, Inc. 6250 W. 10th Street, Unit 2, Greeley, CO 970-515-5294

ACCESS ROAD MAP

SEVENTY HOLES J-5

SECTION: 5
TOWNSHIP: 4N
RANGE: 62W
6TH. P.M.
WELD COUNTY, CO

