



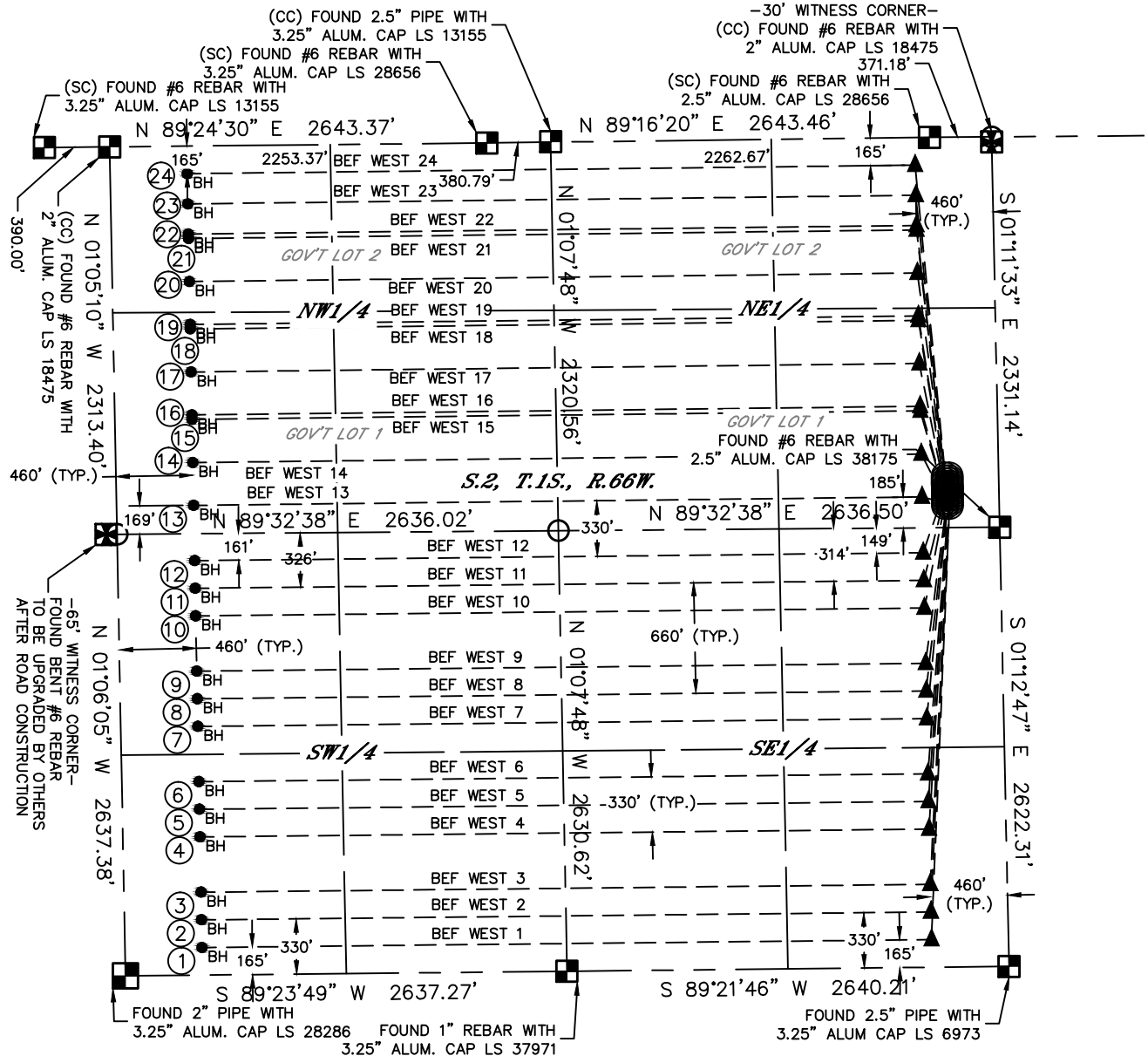
Lat40°, Inc. 6250 W. 10th Street, Unit 2, Greeley, CO 970-515-5294

# MULTI-WELL PLAN

BEF 1S66W2 PAD

SECTION: 2  
TOWNSHIP: 1S  
RANGE: 66W  
6TH. P.M.  
ADAMS COUNTY, CO

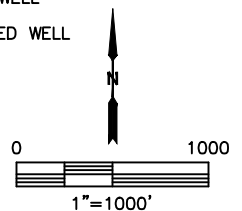
THIS MAP DOES NOT REPRESENT A BOUNDARY SURVEY



SEE SHEET 2 OF 3 FOR TABLES

## LEGEND

- = ALIQUOT MONUMENT AS DESCRIBED
- = CALCULATED POSITION
- = SURFACE HOLE LOCATION (SHL)
- ▲ = ENTRY POINT LOCATION (EP)
- = BOTTOM HOLE LOCATION (BHL)
- ⊙ = EXISTING WELL
- ⊙ = ABANDONED WELL





Lat40°, Inc. 6250 W. 10th Street, Unit 2, Greeley, CO 970-515-5294

# MULTI-WELL PLAN

BEF 1S66W2 PAD

SECTION: 2  
TOWNSHIP: 1S  
RANGE: 66W  
6TH. P.M.  
ADAMS COUNTY, CO

#	WELL NAME	BHL FOOTAGE				BHL LAT °	BHL LONG °	BHL S-T-R
1	BEF WEST 1	165	FSL	460	FWL	39.98736	-104.75062	2-1S-66
2	BEF WEST 2	330	FSL	460	FWL	39.98782	-104.75063	2-1S-66
3	BEF WEST 3	495	FSL	460	FWL	39.98827	-104.75063	2-1S-66
4	BEF WEST 4	825	FSL	460	FWL	39.98917	-104.75065	2-1S-66
5	BEF WEST 5	990	FSL	460	FWL	39.98963	-104.75065	2-1S-66
6	BEF WEST 6	1155	FSL	460	FWL	39.99008	-104.75066	2-1S-66
7	BEF WEST 7	1485	FSL	460	FWL	39.99099	-104.75067	2-1S-66
8	BEF WEST 8	1650	FSL	460	FWL	39.99144	-104.75068	2-1S-66
9	BEF WEST 9	1815	FSL	460	FWL	39.99189	-104.75068	2-1S-66
10	BEF WEST 10	2145	FSL	460	FWL	39.99280	-104.75070	2-1S-66
11	BEF WEST 11	2310	FSL	460	FWL	39.99325	-104.75070	2-1S-66
12	BEF WEST 12	2475	FSL	460	FWL	39.99370	-104.75071	2-1S-66
13	BEF WEST 13	2146	FNL	460	FWL	39.99461	-104.75072	2-1S-66
14	BEF WEST 14	1890	FNL	460	FWL	39.99531	-104.75073	2-1S-66
15	BEF WEST 15	1632	FNL	460	FWL	39.99602	-104.75074	2-1S-66
16	BEF WEST 16	1605	FNL	460	FWL	39.99609	-104.75074	2-1S-66
17	BEF WEST 17	1349	FNL	460	FWL	39.99679	-104.75075	2-1S-66
18	BEF WEST 18	1092	FNL	460	FWL	39.99750	-104.75076	2-1S-66
19	BEF WEST 19	1065	FNL	460	FWL	39.99757	-104.75076	2-1S-66
20	BEF WEST 20	809	FNL	460	FWL	39.99828	-104.75077	2-1S-66
21	BEF WEST 21	552	FNL	460	FWL	39.99898	-104.75078	2-1S-66
22	BEF WEST 22	525	FNL	460	FWL	39.99906	-104.75078	2-1S-66
23	BEF WEST 23	345	FNL	460	FWL	39.99955	-104.75079	2-1S-66
24	BEF WEST 24	165	FNL	460	FWL	40.00004	-104.75080	2-1S-66

#	WELL NAME	SHL FOOTAGE			SHL LAT °	SHL LONG °	SHL PDOP	SHL ELEV (FT.)	SHL 1/4/1/4	SHL S-T-R	
1	BEF WEST 1	2183	FNL	297	FEL	39.99454	-104.73461	1.9	5047	SENE	2-1S-66
2	BEF WEST 2	2167	FNL	297	FEL	39.99459	-104.73461	1.9	5048	SENE	2-1S-66
3	BEF WEST 3	2151	FNL	297	FEL	39.99463	-104.73461	1.9	5048	SENE	2-1S-66
4	BEF WEST 4	2136	FNL	296	FEL	39.99467	-104.73461	1.9	5048	SENE	2-1S-66
5	BEF WEST 5	2120	FNL	296	FEL	39.99472	-104.73461	1.9	5048	SENE	2-1S-66
6	BEF WEST 6	2104	FNL	296	FEL	39.99476	-104.73461	1.9	5048	SENE	2-1S-66
7	BEF WEST 7	2087	FNL	296	FEL	39.99481	-104.73461	1.9	5048	SENE	2-1S-66
8	BEF WEST 8	2071	FNL	296	FEL	39.99485	-104.73461	1.9	5048	SENE	2-1S-66
9	BEF WEST 9	2056	FNL	296	FEL	39.99489	-104.73461	1.9	5048	SENE	2-1S-66
10	BEF WEST 10	2040	FNL	295	FEL	39.99494	-104.73461	1.9	5048	SENE	2-1S-66
11	BEF WEST 11	2024	FNL	295	FEL	39.99498	-104.73461	2.0	5049	SENE	2-1S-66
12	BEF WEST 12	2007	FNL	295	FEL	39.99503	-104.73461	2.0	5049	SENE	2-1S-66
13	BEF WEST 13	2184	FNL	322	FEL	39.99454	-104.73470	2.0	5047	SENE	2-1S-66
14	BEF WEST 14	2168	FNL	322	FEL	39.99459	-104.73470	2.0	5048	SENE	2-1S-66
15	BEF WEST 15	2152	FNL	322	FEL	39.99463	-104.73470	2.0	5048	SENE	2-1S-66
16	BEF WEST 16	2136	FNL	321	FEL	39.99467	-104.73470	2.0	5048	SENE	2-1S-66
17	BEF WEST 17	2120	FNL	321	FEL	39.99472	-104.73470	2.0	5048	SENE	2-1S-66
18	BEF WEST 18	2104	FNL	321	FEL	39.99476	-104.73470	2.0	5048	SENE	2-1S-66
19	BEF WEST 19	2088	FNL	321	FEL	39.99481	-104.73470	2.0	5048	SENE	2-1S-66
20	BEF WEST 20	2072	FNL	321	FEL	39.99485	-104.73470	2.0	5048	SENE	2-1S-66
21	BEF WEST 21	2056	FNL	321	FEL	39.99489	-104.73470	2.0	5048	SENE	2-1S-66
22	BEF WEST 22	2040	FNL	321	FEL	39.99494	-104.73470	2.0	5048	SENE	2-1S-66
23	BEF WEST 23	2024	FNL	320	FEL	39.99498	-104.73470	2.0	5049	SENE	2-1S-66
24	BEF WEST 24	2008	FNL	320	FEL	39.99503	-104.73470	1.9	5049	SENE	2-1S-66



Lat40°, Inc. 6250 W. 10th Street, Unit 2, Greeley, CO 970-515-5294

# MULTI-WELL PLAN

BEF 1S66W2 PAD

SECTION: 2  
TOWNSHIP: 1S  
RANGE: 66W  
6TH. P.M.  
ADAMS COUNTY, CO

