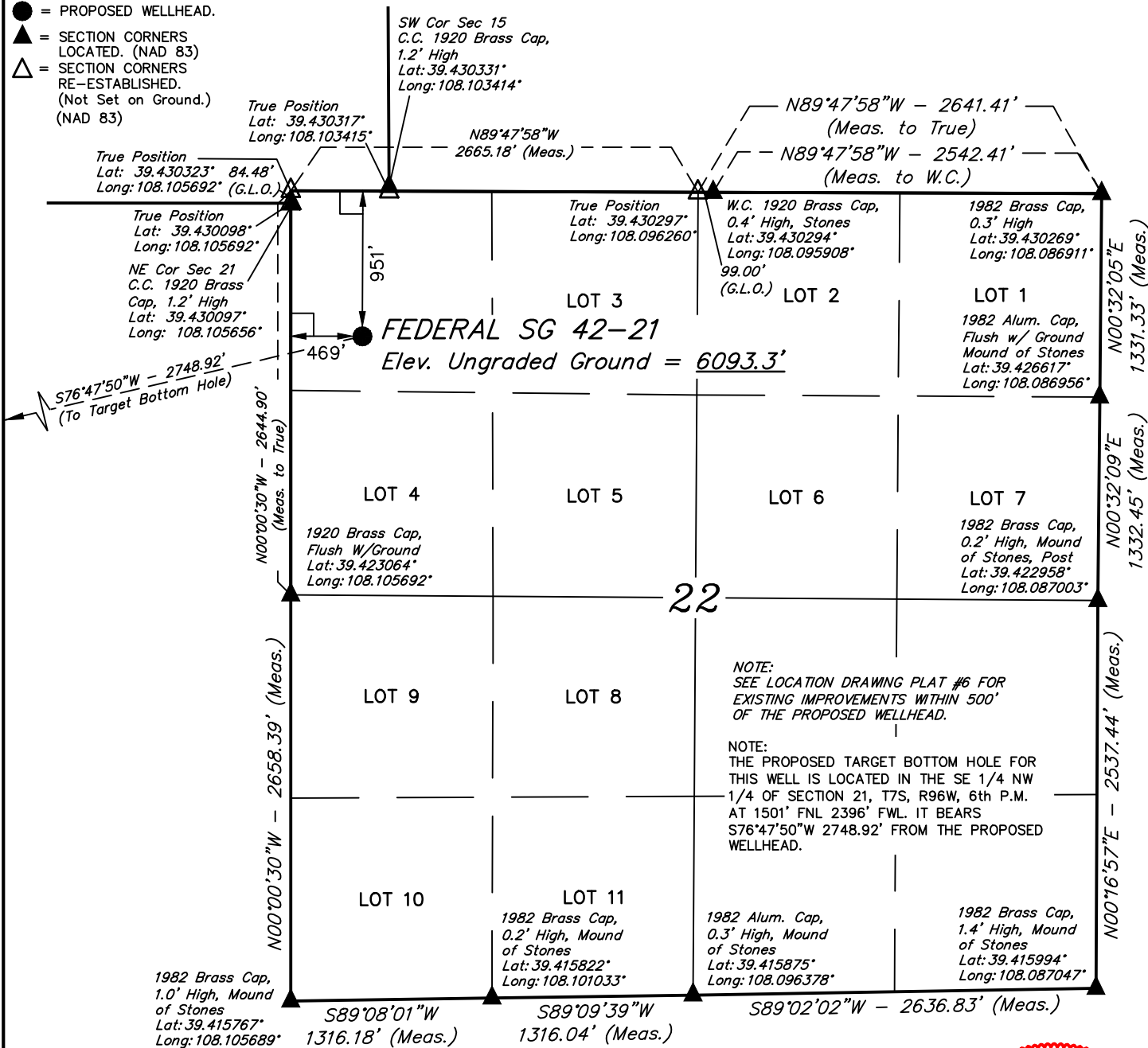


LEGEND:

- ◻ = 90° SYMBOL
- = PROPOSED WELLHEAD.
- ▲ = SECTION CORNERS LOCATED. (NAD 83)
- △ = SECTION CORNERS RE-ESTABLISHED. (Not Set on Ground.) (NAD 83)

T7S, R96W, 6th P.M.



PDOP = 1.4

NAD 83 (SURFACE LOCATION)
LATITUDE = 39°25'39.75" (39.427710)
LONGITUDE = 108°06'14.51" (108.104032)
STATE PLANE NAD 83 (CO. CEN.)
N: 1591214.55 E: 2264528.75



THIS IS TO CERTIFY THAT THE ABOVE PLAT WAS PREPARED AND THE LOCATION AS SHOWN WAS STAKED ON THE GROUND FROM FIELD NOTES OF ACTUAL SURVEYS MADE BY ME OR UNDER MY SUPERVISION AND THAT THE SAME ARE TRUE AND CORRECT TO THE BEST OF MY KNOWLEDGE AND BELIEF.

PLAT #1

REGISTERED LAND SURVEYOR
REGISTRATION NO. 108180
STATE OF COLORADO 10-02-18

REV: 3 10-02-18 M.D. (BHL MOVE)

BASIS OF BEARINGS
BASIS OF BEARINGS IS A G.P.S. OBSERVATION

BASIS OF ELEVATION
SPOT ELEVATION AT THE NORTHWEST CORNER OF SECTION 30, T7S, R95W, 6th P.M., TAKEN FROM THE FORKED GULCH, QUADRANGLE, COLORADO, GARFIELD COUNTY, 7.5 MINUTE QUAD. (TOPOGRAPHIC MAP) PUBLISHED BY THE UNITED STATES DEPARTMENT OF THE INTERIOR, GEOLOGICAL SURVEY. SAID ELEVATION IS MARKED AS BEING 5966 FEET.



UELS, LLC
Corporate Office * 85 South 200 East
Vernal, UT 84078 * (435) 789-1017



TEP Rocky Mountain LLC

FEDERAL SG 42-21 (SURFACE LOCATION)
NW 1/4 NW 1/4, SECTION 22, T7S, R96W, 6th P.M.
GARFIELD COUNTY, COLORADO

SURVEYED BY	BART HUNTING, C.R.	02-16-18	SCALE
DRAWN BY	M.D.	02-24-18	1" = 1000'

WELL LOCATION PLAT

LEGEND:

- = 90° SYMBOL
- = PROPOSED WELLHEAD.
- = TARGET BOTTOM HOLE.
- ▲ = SECTION CORNERS LOCATED. (NAD 83)
- △ = SECTION CORNERS RE-ESTABLISHED. (Not Set on Ground.) (NAD 83)

T7S, R96W, 6th P.M.

SW Cor Sec 15
C.C. 1920 Brass Cap,
1.2' High
Lat: 39.430331°
Long: 108.103414°

True Position
Lat: 39.430317°
Long: 108.103415°

N89°55'19"W - 4602.26' (Meas. to True)
N89°55'19"W - 4612.71' (Meas. to C.C.)
True Position
Lat: 39.430323° 84.48'
Long: 108.105692° (G.L.O.)

1920 Brass Cap,
0.7' High
Lat: 39.430114°
Long: 108.121980°

True Position
Lat: 39.430098°
Long: 108.105692°

C.C. 1920 Brass
Cap, 1.2' High
Lat: 39.430097°
Long: 108.105656°

Surface
Location

1920 Brass Cap,
Lat: 39.422894°
Long: 108.121981°

W 1/4 Cor. Sec. 22
1920 Brass Cap,
Flush W/Ground
Lat: 39.423064°
Long: 108.105692°

NOTE:
THE PROPOSED TARGET BOTTOM HOLE
BEARS S76°47'50"W 2748.92' FROM THE
PROPOSED WELLHEAD WHICH IS LOCATED IN
THE NW 1/4 NW 1/4 OF SECTION 22, T7S,
R96W, 6th P.M. AT 951' FNL 469' FWL.

C.C. Brass Cap,
Flush W/Ground,
Lat: 39.415783°
Long: 108.122006°

True Position
Lat: 39.415784°
Long: 108.122005°

W.C. S 1/4 Cor. Sec. 21
1920 Brass Cap,
Lat: 39.415742°
Long: 108.112778°

1982 Brass Cap,
1.0' High, Mound
of Stones
Lat: 39.415767°
Long: 108.105689°

NW Cor Sec 28
1920 Brass Cap,
2.5' High, Mound
of Stones
Lat: 39.415786°
Long: 108.123806°

N 1/4 Cor Sec 28
1920 Brass Cap,
1.6' High
Lat: 39.415778°
Long: 108.114806°

CERTIFICATE

THIS IS TO CERTIFY THAT THE ABOVE PLAT WAS PREPARED AND THE
LOCATION AS SHOWN WAS STAKED ON THE GROUND FROM FIELD NOTES
OF ACTUAL SURVEYS MADE BY ME OR UNDER MY SUPERVISION AND THAT
THE SAME ARE TRUE AND CORRECT TO THE BEST OF MY KNOWLEDGE AND
BELIEF.

REGISTERED LAND SURVEYOR
REGISTRATION NO. 118180
STATE OF COLORADO



NAD 83 (TARGET BOTTOM HOLE)
LATITUDE = 39°25'33.55" (39.425986)
LONGITUDE = 108°06'48.61" (108.113503)
STATE PLANE NAD 83 (CO. CEN.)
N: 1590663.98 E: 2261836.45



PLAT #1

REV: 4 11-08-18 M.D. (GRAMMAR CHANGE)

BASIS OF BEARINGS

BASIS OF BEARINGS IS A G.P.S. OBSERVATION

BASIS OF ELEVATION

SPOT ELEVATION AT THE NORTHWEST CORNER OF SECTION 30, T7S, R95W, 6th P.M.,
TAKEN FROM THE FORKED GULCH, QUADRANGLE, COLORADO, GARFIELD COUNTY, 7.5
MINUTE QUAD. (TOPOGRAPHIC MAP) PUBLISHED BY THE UNITED STATES DEPARTMENT
OF THE INTERIOR, GEOLOGICAL SURVEY. SAID ELEVATION IS MARKED AS BEING 5966
FEET.



UELS, LLC
Corporate Office * 85 South 200 East
Vernal, UT 84078 * (435) 789-1017



TEP Rocky Mountain LLC

FEDERAL SG 42-21 (TARGET BOTTOM HOLE)
SE 1/4 NW 1/4, SECTION 21, T7S, R96W, 6th P.M.
GARFIELD COUNTY, COLORADO

SURVEYED BY	BART HUNTING, C.R.	02-16-18	SCALE
DRAWN BY	M.D.	02-24-18	1" = 1000'

WELL LOCATION PLAT