

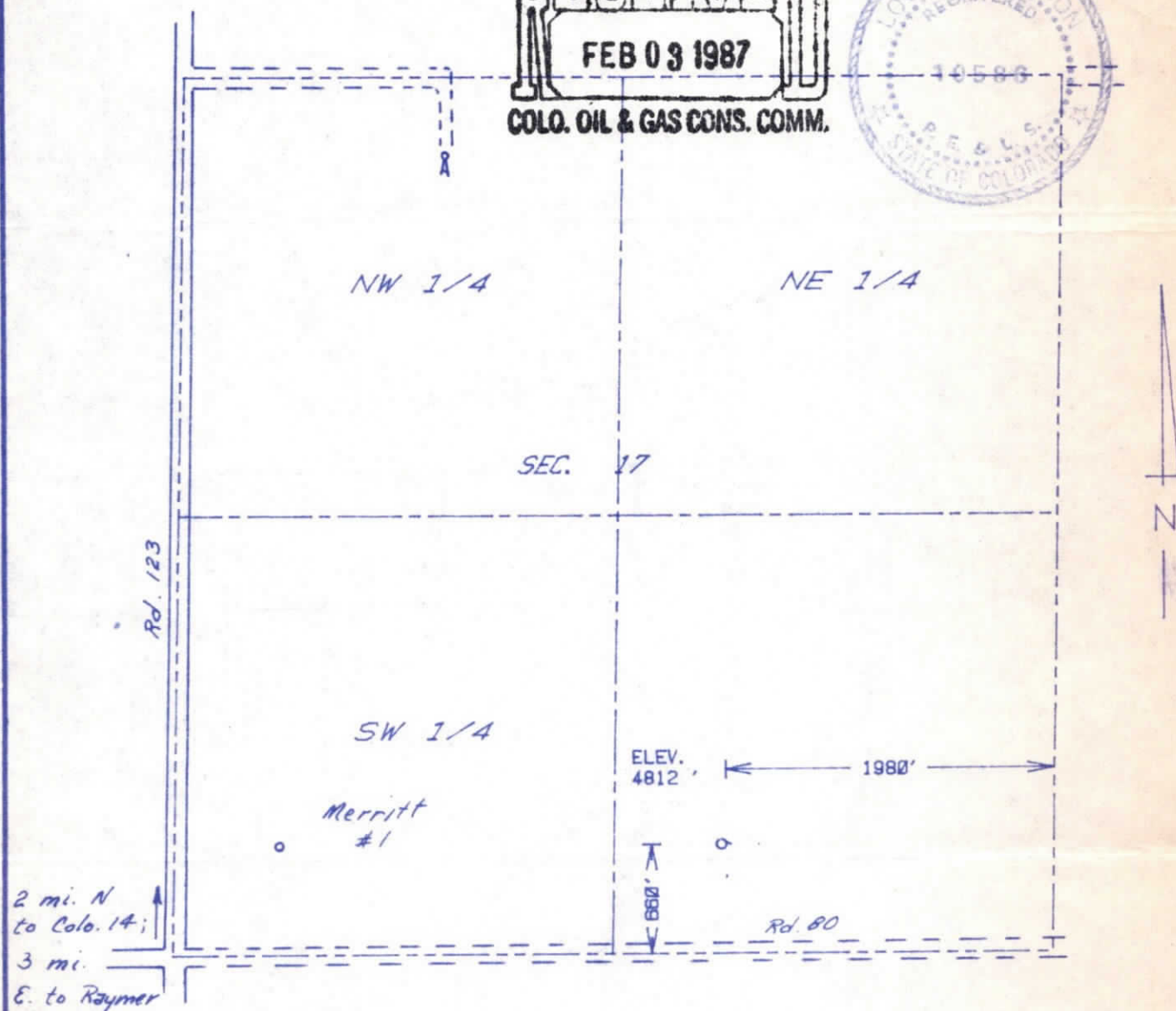


00225672

THE ACCOMPANYING PLAT IS AN ACCURATE REPRESENTATION SHOWING THE LOCATION OF A PROPOSED WELL. THIS LOCATION MAY BE DESCRIBED AS A POINT 660 FEET NORTH OF THE SOUTH LINE, AND 1980 FEET WEST OF THE EAST LINE OF SECTION 17, TOWNSHIP 7 N RANGE 58 W OF THE 6th P.M., WELD COUNTY, COLORADO. THE SURFACE ELEVATION AT THIS POINT IS 4812 FEET m.s.l.

RECEIVED
FEB 03 1987

COLO. OIL & GAS CONS. COMM.



SCALE - 1"=1000'

- SURVEYED POINT
- REFERENCE STAKE (200 'S, 200 'E)
- SE 1/4 SEC. 17 , T 7 N , R 58 W

HARMON
ENGINEERING
SERVICES

TOM #1

ENERGY MINERALS CORP.

WELD CO., COLORADO

19 JAN. 1987