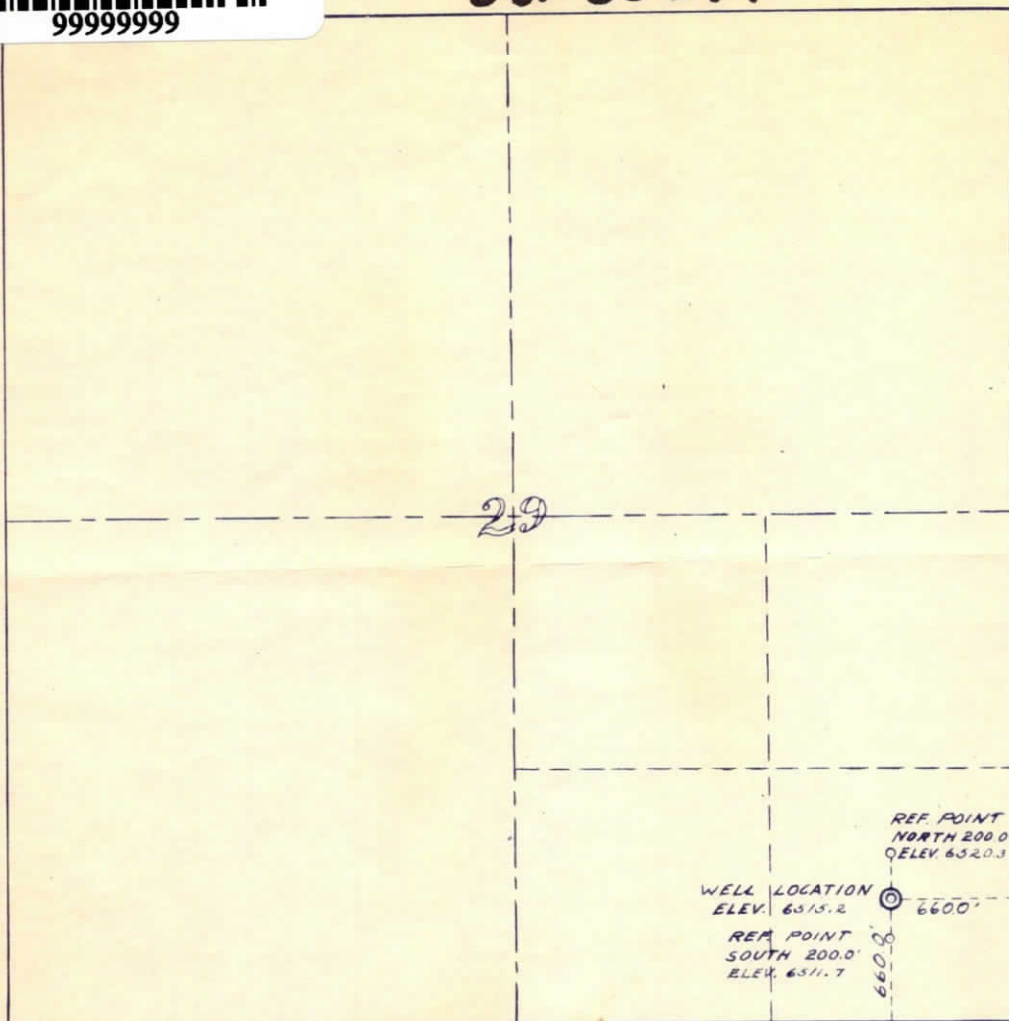




99999999

081-05349



N

T.7 N., R.92 W. 6TH P.M.

WELL LOCATION

INTEX - SOUTH PENN NO. 1 PREECE

INTEX OIL COMPANY

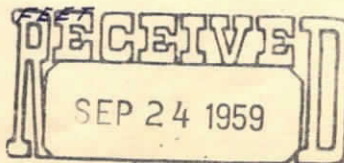
BAKERSFIELD, CALIFORNIA

SITUATED IN SE¹/₄ SE¹/₄, SECTION 29,

T.7 N., R.92 W. OF THE 6TH P.M.

MOFFAT COUNTY, COLORADO

SCALE 1 INCH = 1000



OIL & GAS

NSERVATION COMMISSION

THIS IS TO CERTIFY THAT THE
WELL LOCATION SHOWN ON THIS
PLAT WAS PLOTTED FROM FIELD
NOTES OF ACTUAL SURVEYS MADE BY
ME OR UNDER MY SUPERVISION AND
THAT THE SAME ARE TRUE AND
CORRECT TO THE BEST OF MY
KNOWLEDGE AND BELIEF.
DATE SURVEYED SEPT. 14, 1959

Tom Walker

TOM WALKER
REGISTERED LAND SURVEYOR
GLENWOOD SPRINGS, COLO.
CERTIFICATE NO. 597



00723786