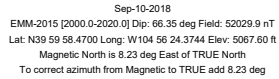
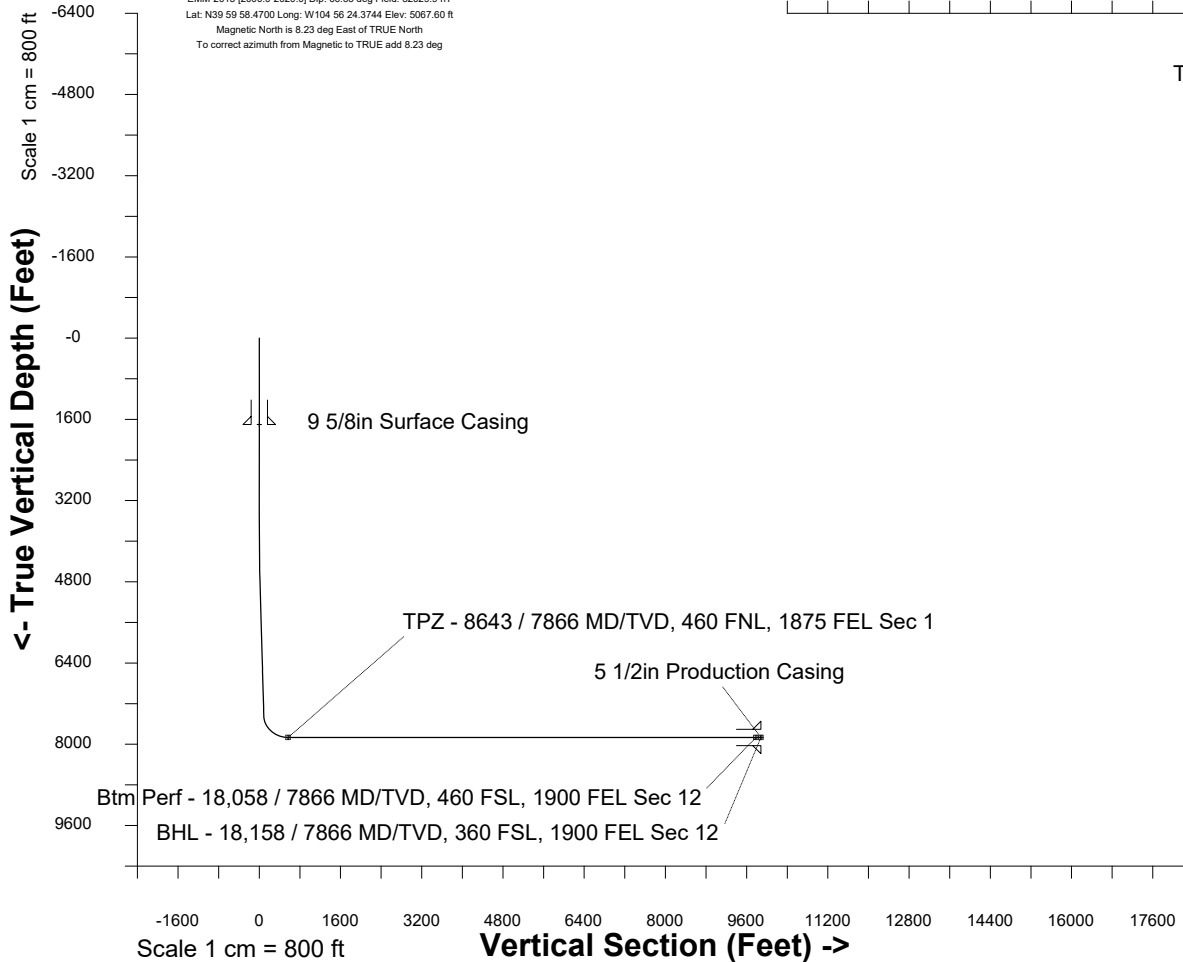


Location	Colorado	Slot	E05 - Rio LC 12-368HC
Field	Wattenburg	Well	Rio LC 12-368HC
Installation	Rio	Wellbore	Rio LC 12-368HC (PWB)

<p>Plot reference is Rio LC 12-368HC (PWB).</p> <p>Ref wellpath is Rio LC 12-368HC (PWP#1).</p> <p>Coordinates are in Feet reference E05 - Rio LC 12-368HC.</p> <p>True Vertical Depths are reference Rig Datum.</p> <p>Measured Depths are reference Rig Datum.</p> <p>Rig Datum: Planned Datum #1</p> <p>Rig Datum to Mean Sea Level: 5087.60 ft.</p> <p>Plot North is aligned to TRUE North.</p>



East (Feet) ->



WELL PROFILE DATA

Point	MD	Inc	Azi	TVD	North	East	deg/100ft	V. Sect
Tie on	0.00	0.00	0.00	0.00	S 0.00	W 0.00		-0.00
KOP	3797.00	0.00	279.07	3797.00	S 0.00	W 0.00	0.00	-0.00
End of Build	4797.02	30.00	279.07	4751.95	N 40.34	W 252.68	3.00	12.68
End of Hold	7916.15	30.00	279.07	7453.18	N 286.20	W 1792.77	0.00	89.99
Target TPZ - ... Sec 1	8642.98	90.00	180.07	7866.00	S 152.92	W 2028.69	13.00	568.34
Target Btm Pe...Sec 12	18057.61	90.00	180.07	7866.00	S 9567.53	W 2039.55	0.00	9782.49
End of Turn	18059.33	90.00	179.84	7866.00	S 9569.25	W 2039.55	13.00	9784.17
T.D. & Target BHL... 12	18157.78	90.00	179.84	7866.00	S 9667.71	W 2039.28	0.00	9880.45



<- North(Feet)

Scale 1 cm = 400 ft