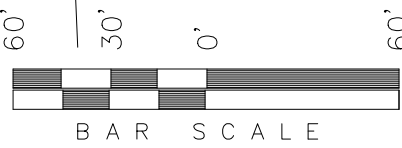
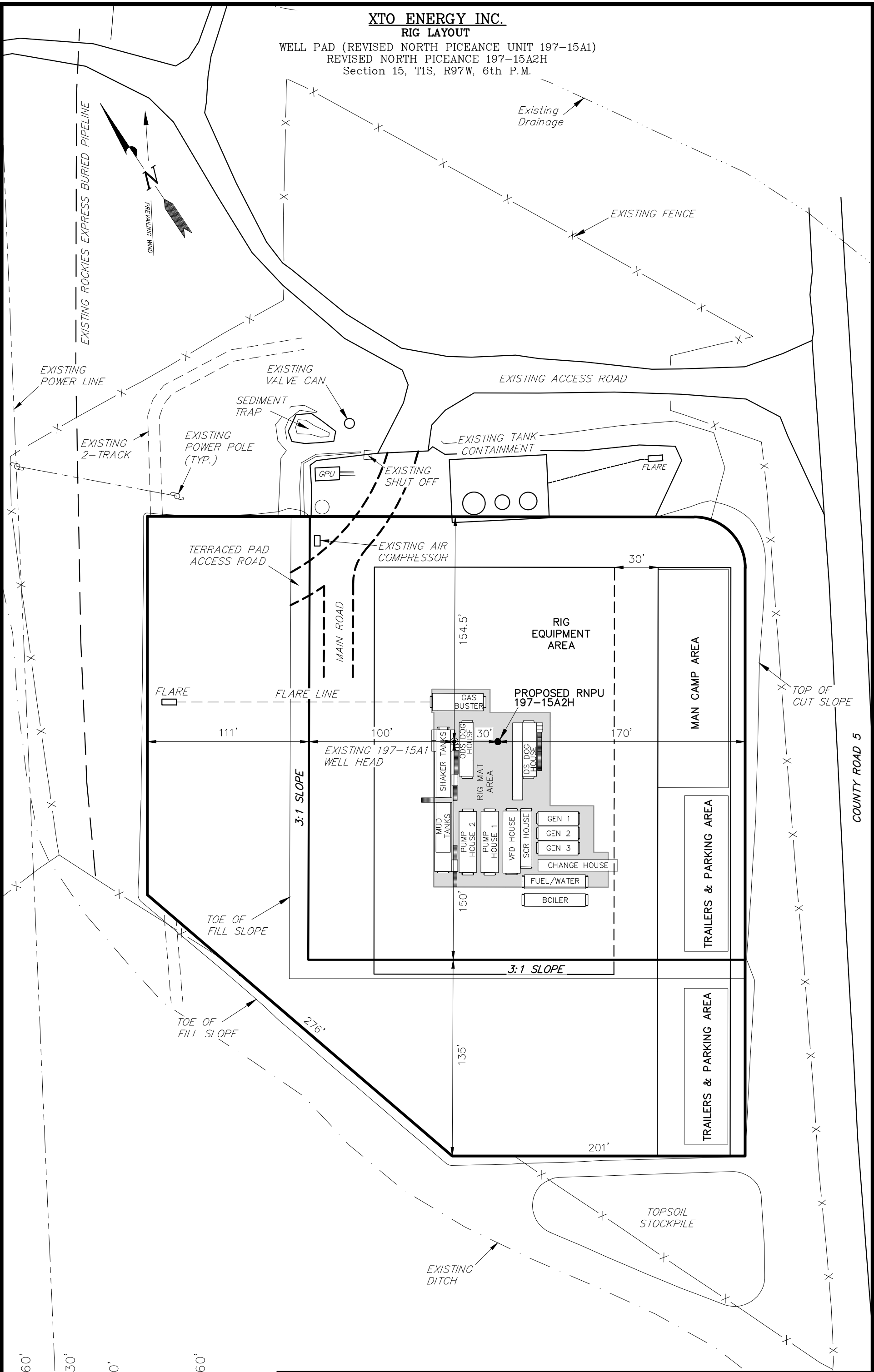


XTO ENERGY INC.
RIG LAYOUT

WELL PAD (REVISED NORTH PICEANCE UNIT 197-15A1)
REVISED NORTH PICEANCE 197-15A2H
Section 15, T1S, R97W, 6th P.M.



SURVEYED BY:	S.H.	SURVEY DATE:	06-08-18
DRAWN BY:	K.S.	DATE DRAWN:	06-08-18
SCALE:	1" = 60'	REVISED:	07-25-18

Tri State
Land Surveying, Inc.
180 NORTH VERNAL AVE. VERNAL, UTAH 84078