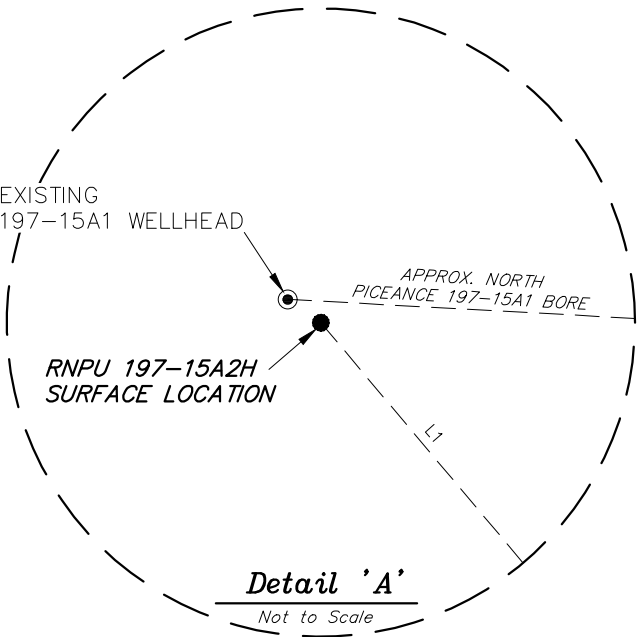
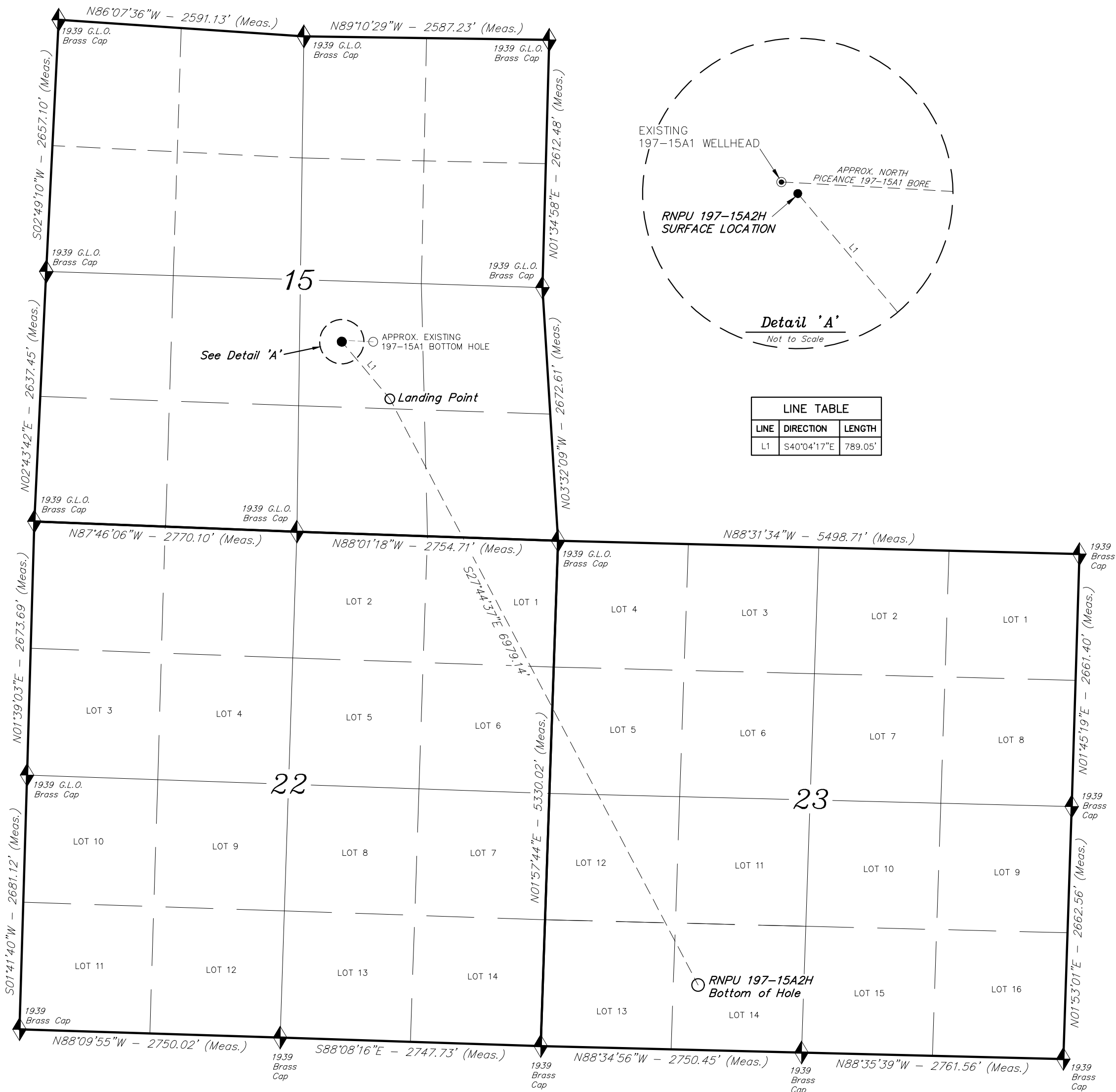
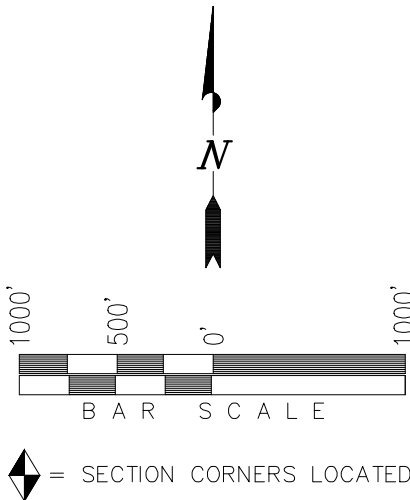


T1S, R97W, 6th P.M.

XTO ENERGY INC.
MULTI-WELL PLAN
NORTH PICEANCE UNIT 197-15A2H
NW 1/4 SE 1/4 SECTION 15, T1S, R97W, 6th P.M.
RIO BLANCO COUNTY, COLORADO.



LINE TABLE		
LINE	DIRECTION	LENGTH
L1	S40°04'17"E	789.05'

THIS IS TO CERTIFY THAT THE ABOVE PLAT WAS PREPARED FROM FIELD NOTES OF ACTUAL SURVEYS MADE BY ME OR UNDER MY SUPERVISION, THE LOCATION HAS BEEN FOUND TO BE CORRECT AS SHOWN ON THE PLAT, AND THAT THE SAME ARE TRUE AND CORRECT TO THE BEST OF MY KNOWLEDGE AND BELIEF.

32926
08-10-18
30125
REGISTERED LAND SURVEYOR
REGISTRATION NO. 30125
STATE OF COLORADO

TRI STATE LAND SURVEYING & CONSULTING
180 NORTH VERNAL AVE. - VERNAL, UTAH 84078
(435) 781-2501

DATE SURVEYED: 06-08-18	SURVEYED BY: S.H.
DATE DRAWN: 06-08-18	DRAWN BY: S.V.
REVISED:	SCALE: 1" = 1000'