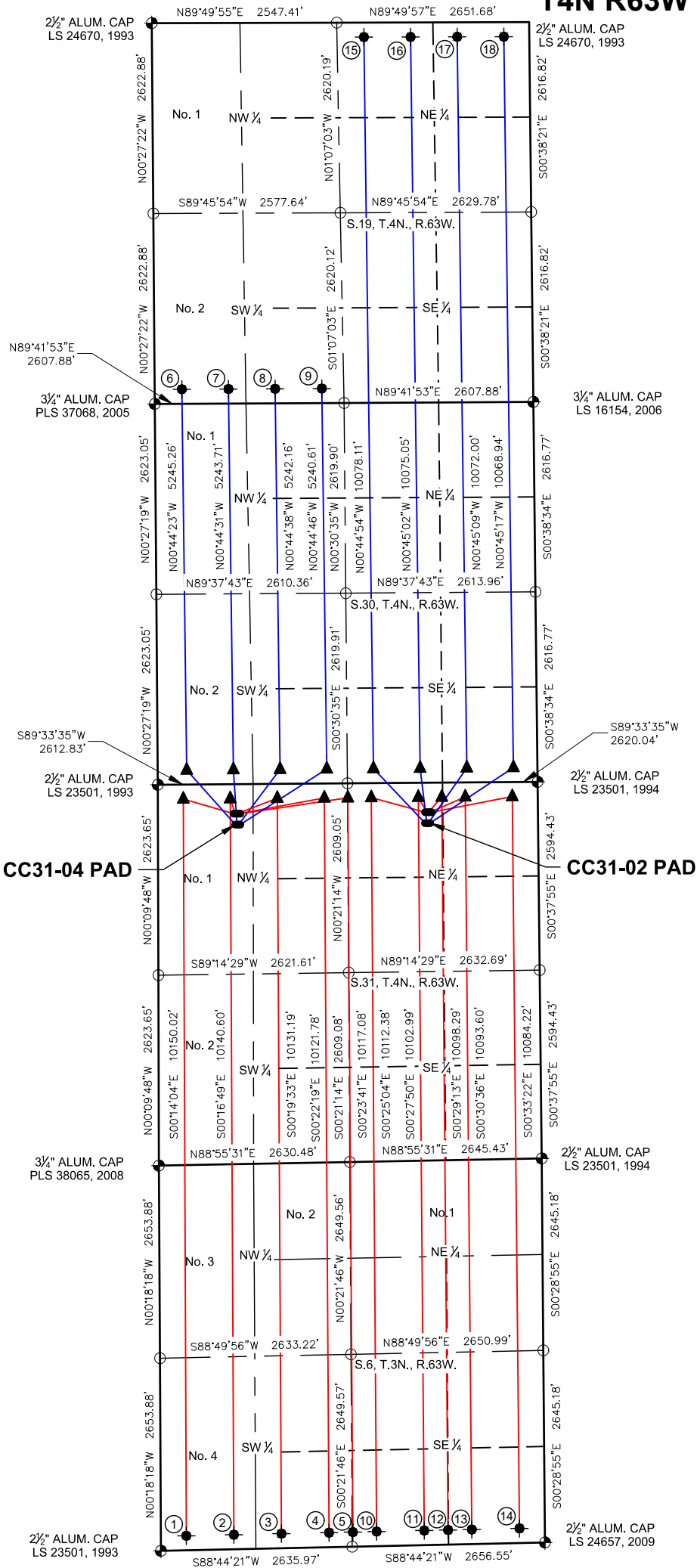
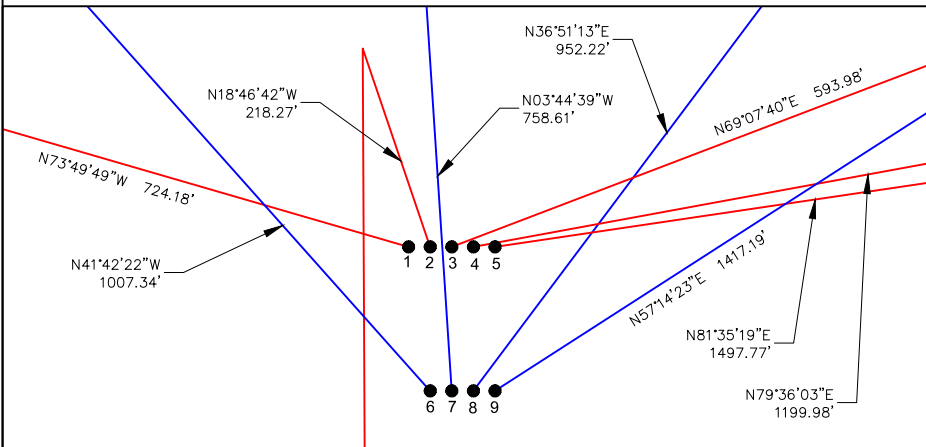


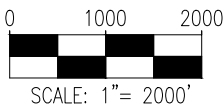
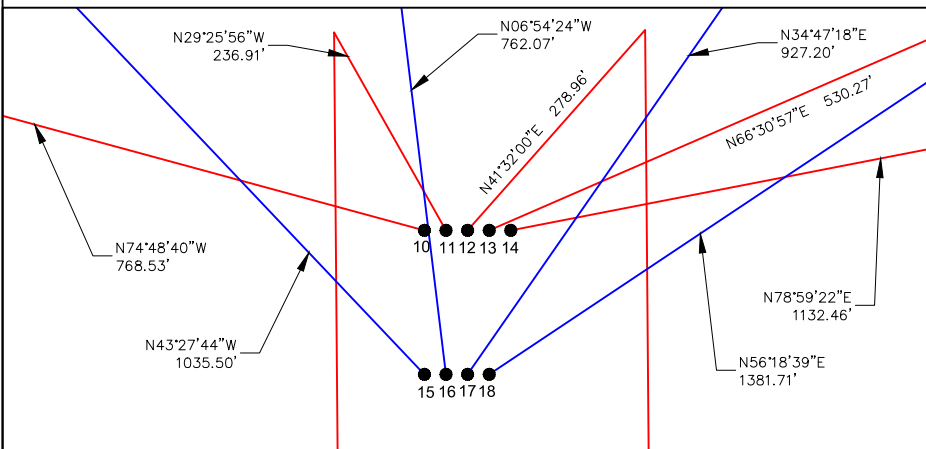
CC31-04 PAD & CC31-02 PAD
MULTI-WELL LOCATION PLAT / MULTI-WELL PLAN
T4N R63W SECTION 31



PROPOSED WELLBORE DIRECTION DATA
CC31-04 PAD
SLOTS 1-9



PROPOSED WELLBORE DIRECTION DATA
CC31-02 PAD
SLOTS 10-18



LEGEND

- FOUND MONUMENT
- CALCULATED POSITION
- PROPOSED WELL
- BOTTOM HOLE
- TOP OF PRODUCTION ZONE

Notes:

- All bearings are Grid Bearings of the Colorado State Plane Coordinate System, North Zone, North American Datum 1983/2011. The lineal dimensions as shown herein are grid distances based upon the "U.S. Survey Foot." To get ground distances multiply shown distance by 1.0002676.
- Distances are measured at 90° from section line of the Sixth Principal Meridian, County of Weld, State of Colorado.
- Ground elevations are based on an observed GPS elevation (NAVD 1988 DATUM).
- Surface use: "RANGELAND"
- Instrument Operator: Dominick Davis
- This map does not represent a boundary survey.

DISCLAIMER:
THIS PLOT DOES NOT REPRESENT A MONUMENTED LAND SURVEY AND SHOULD NOT BE RELIED UPON TO DETERMINE BOUNDARY LINES, PROPERTY OWNERSHIP OR OTHER PROPERTY INTERESTS. PARCEL LINES, IF DEPICTED HAVE NOT BEEN FIELD VERIFIED AND MAY BE BASED UPON PUBLICLY AVAILABLE DATA THAT ALSO HAS NOT BEEN INDEPENDENTLY VERIFIED.

SURFACE HOLE LOCATION								TOP OF PRODUCTIVE ZONE		BOTTOM HOLE LOCATION	
SLOT	WELL NAME	LATITUDE	LONGITUDE	FOOTAGE		QTR-QTR	ELEV.	FOOTAGE		FOOTAGE	
1	BOOTH DD06-785	40.27498°N	104.48608°W	407' FNL	1045' FWL	NWNW	4776'	200' FNL	350' FWL	200' FSL	350' FWL
2	BOOTH DD06-775	40.27498°N	104.48600°W	407' FNL	1067' FWL	NWNW	4777'	200' FNL	998' FWL	200' FSL	1006' FWL
3	BOOTH DD06-765	40.27498°N	104.48592°W	407' FNL	1090' FWL	NWNW	4777'	200' FNL	1646' FWL	200' FSL	1662' FWL
4	BOOTH DD06-755	40.27498°N	104.48584°W	408' FNL	1112' FWL	NWNW	4776'	200' FNL	2293' FWL	200' FSL	2318' FWL
5	BOOTH DD06-750	40.27498°N	104.48576°W	408' FNL	1135' FWL	NWNW	4776'	200' FNL	2617' FEL	200' FSL	2646' FWL
6	BOOTH CC30-784	40.27457°N	104.48600°W	557' FNL	1067' FWL	NWNW	4773'	200' FSL	400' FWL	200' FSL	374' FWL
7	BOOTH CC30-774	40.27457°N	104.48593°W	557' FNL	1090' FWL	NWNW	4775'	200' FSL	1043' FWL	200' FSL	1017' FWL
8	BOOTH CC30-764	40.27457°N	104.48584°W	558' FNL	1112' FWL	NWNW	4776'	200' FSL	1686' FWL	200' FSL	1660' FWL
9	BOOTH CC30-755	40.27457°N	104.48576°W	558' FNL	1135' FWL	NWNW	4778'	200' FSL	2330' FWL	200' FSL	2303' FWL
10	BOOTH DD06-745	40.27495°N	104.47663°W	407' FNL	1554' FEL	NWNE	4788'	200' FNL	2293' FEL	200' FSL	2318' FEL
11	BOOTH DD06-734	40.27495°N	104.47655°W	407' FNL	1531' FEL	NWNE	4788'	200' FNL	1646' FEL	200' FSL	1662' FEL
12	BOOTH DD06-730	40.27495°N	104.47647°W	407' FNL	1509' FEL	NWNE	4789'	200' FNL	1322' FEL	200' FSL	1334' FEL
13	BOOTH DD06-725	40.27495°N	104.47639°W	408' FNL	1486' FEL	NWNE	4789'	200' FNL	998' FEL	200' FSL	1006' FEL
14	BOOTH DD06-715	40.27495°N	104.47630°W	408' FNL	1464' FEL	NWNE	4790'	200' FNL	350' FEL	200' FSL	350' FEL
15	BOOTH CC30-745	40.27454°N	104.47663°W	557' FNL	1556' FEL	NWNE	4786'	200' FSL	2260' FEL	200' FNL	2278' FEL
16	BOOTH CC30-734	40.27454°N	104.47655°W	557' FNL	1533' FEL	NWNE	4787'	200' FSL	1616' FEL	200' FNL	1636' FEL
17	BOOTH CC30-725	40.27454°N	104.47647°W	557' FNL	1511' FEL	NWNE	4787'	200' FSL	973' FEL	200' FNL	993' FEL
18	BOOTH CC30-715	40.27454°N	104.47639°W	558' FNL	1488' FEL	NWNE	4787'	200' FSL	330' FEL	200' FNL	350' FEL



7535 Hilltop Circle
Denver, CO 80221
(303) 928-7128
www.ascentgeomatics.com

FIELD DATE:
09-22-18
DRAWN BY:
CAJ

DRAWING DATE:
09-25-18
CHECKED BY:
SMF

SURFACE LOCATION:
SEC. 31, T4N, R63W, 6TH P.M.
WELD COUNTY, COLORADO

PUBLICLY AVAILABLE DATA SOURCES HAVE NOT BEEN INDEPENDENTLY VERIFIED BY ASCENT.

