

Inspection Photo
Kelley 34-14
API # 045-10055
Inspection # 689302279



Location Photo #1

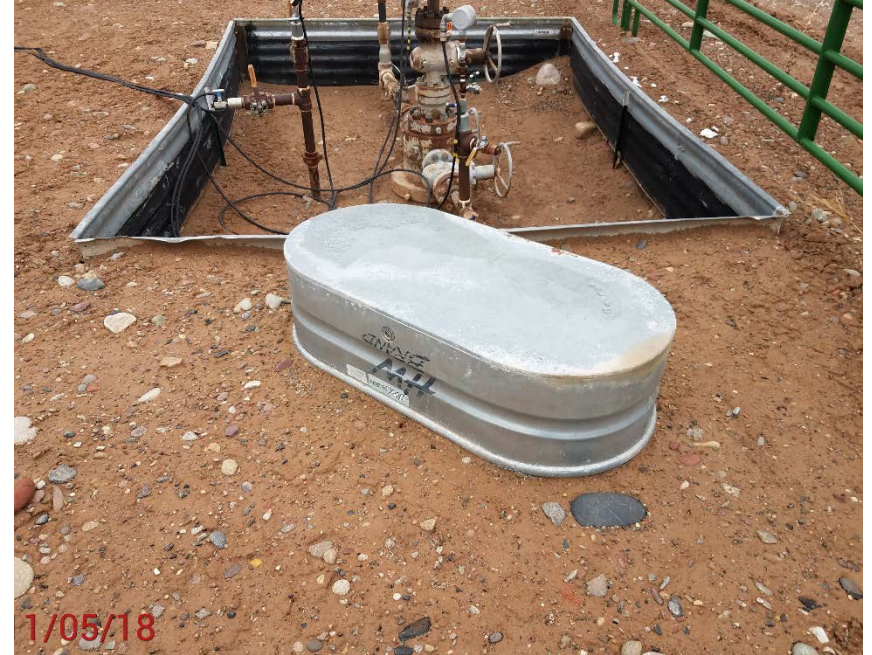


Location Photo #2

**Inspection Photo
Kelley 34-14
API # 045-10055
Inspection # 689302279**



Location Photo #3



**Location Photo #4, unused equipment near
wellheads**

**Inspection Photo
Kelley 34-14
API # 045-10055
Inspection # 689302279**



**Location Photo #5, mechanical condition on
3" valve, oily stained ground**



Location Photo #6, oily stained ground

**Inspection Photo
Kelley 34-14
API # 045-10055
Inspection # 689302279**



**Location Photo #7, holes in secondary
containment liner**



**Location Photo #8, holes in secondary
containment liner**

**Inspection Photo
Kelley 34-14
API # 045-10055
Inspection # 689302279**



**Location Photo #9, holes in secondary
containment liner**



**Location Photo #10, holes in secondary
containment liner**

Inspection Photo
Kelley 34-14
API # 045-10055
Inspection # 689302279



Location Photo #11, holes in secondary containment liner



Location Photo #12, holes in secondary containment liner

Inspection Photo
Kelley 34-14
API # 045-10055
Inspection # 689302279



**Location Photo #13, holes in secondary
containment liner**