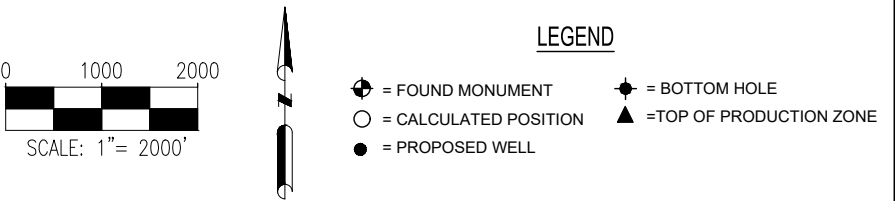
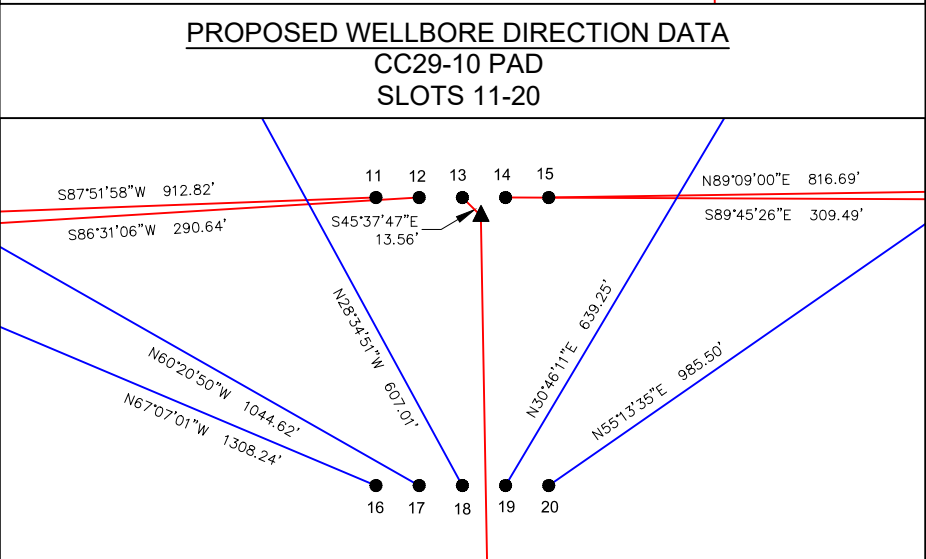
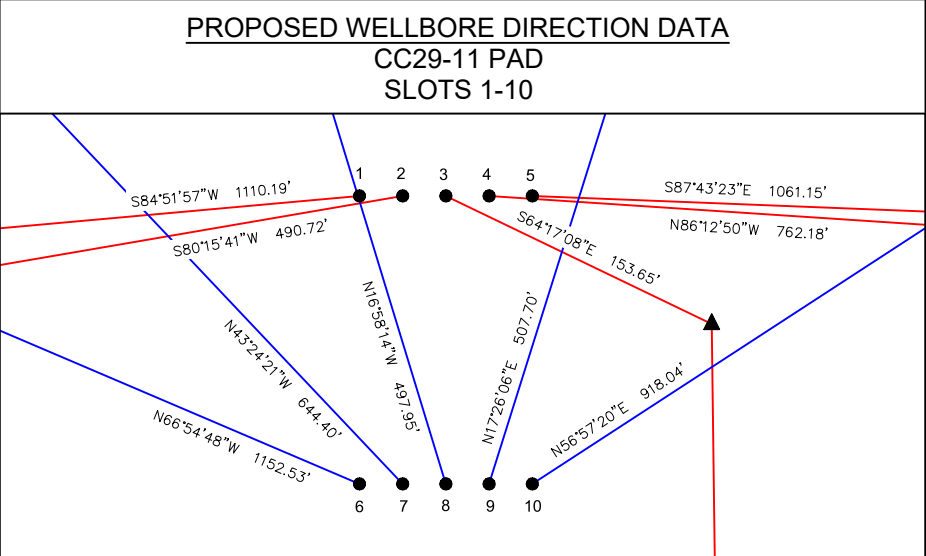
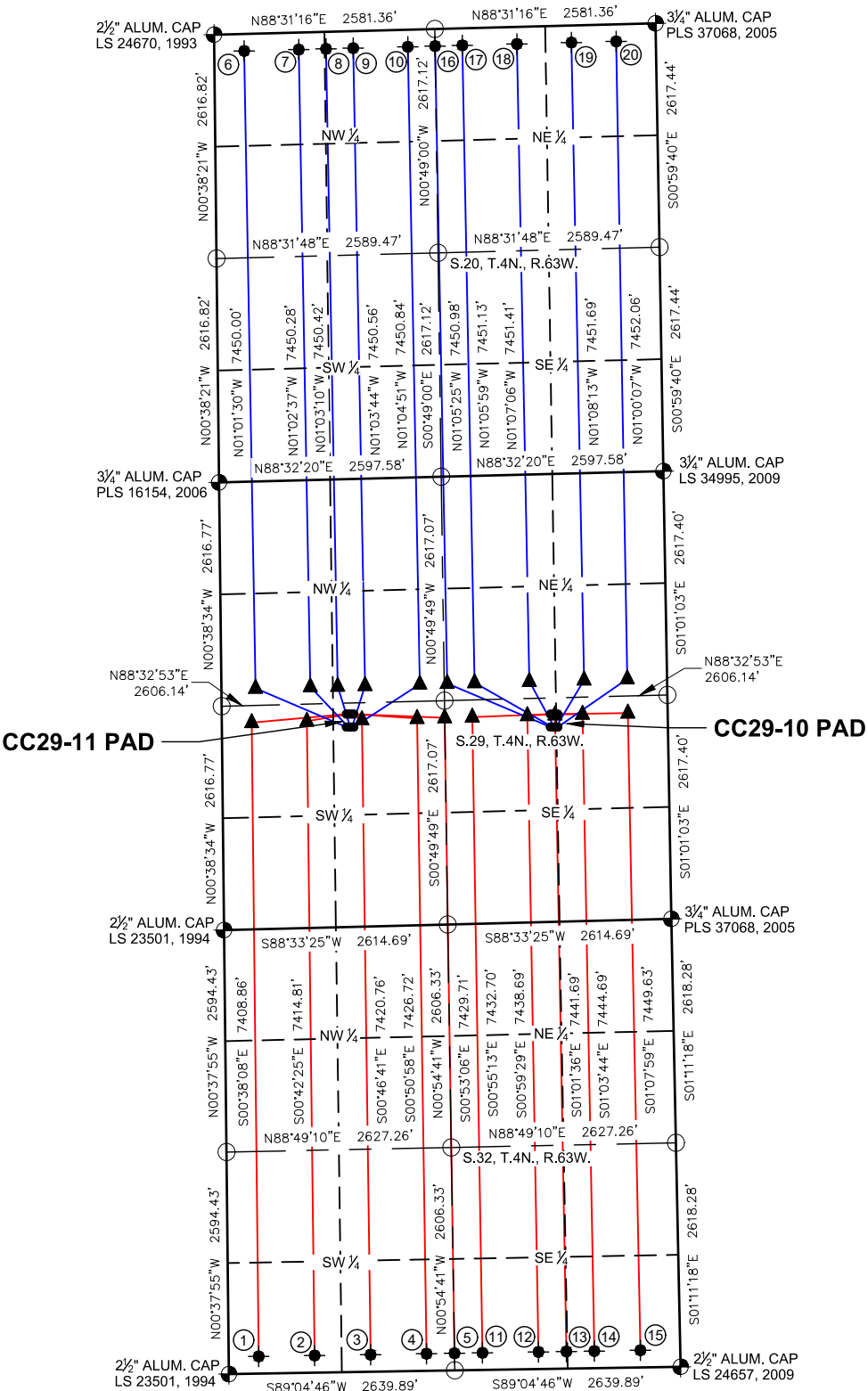


CC29-11 PAD & CC29-10 PAD  
MULTI-WELL LOCATION PLAT / MULTI-WELL PLAN  
T4N R63W SECTION 29



Notes:

1) All bearings are Grid Bearings of the Colorado State Plane Coordinate System, North Zone, North American Datum 1983/2011. The lineal dimensions as shown herein are grid distances based upon the "U.S. Survey Foot." To get ground distances multiply shown distance by 1.000268.

2) Distances are measured at 90° from section line of the Sixth Principal Meridian, County of Weld, State of Colorado.

3) Ground elevations are based on an observed GPS elevation (NAVD 1988 DATUM).

4) Surface use: "RANGELAND"

5) Instrument Operator: Dominick Davis

6) This map does not represent a boundary survey.

DISCLAIMER:  
THIS PLOT DOES NOT REPRESENT A MONUMENTED LAND SURVEY AND SHOULD NOT BE RELIED UPON TO DETERMINE BOUNDARY LINES, PROPERTY OWNERSHIP OR OTHER PROPERTY INTERESTS. PARCEL LINES, IF DEPICTED HAVE NOT BEEN FIELD VERIFIED AND MAY BE BASED UPON PUBLICLY AVAILABLE DATA THAT ALSO HAS NOT BEEN INDEPENDENTLY VERIFIED.

SURFACE HOLE LOCATION							TOP OF PRODUCTIVE ZONE		BOTTOM HOLE LOCATION		
SLOT	WELL NAME	LATITUDE	LONGITUDE	FOOTAGE		QTR-QTR	ELEV.	FOOTAGE		FOOTAGE	
1	GUTTERSEN CC32-785	40.28294°N	104.46583°W	2488' FSL	1457' FWL	NESW	4761'	2417' FSL	350' FWL	200' FSL	350' FWL
2	GUTTERSEN CC32-775	40.28294°N	104.46575°W	2487' FSL	1479' FWL	NESW	4762'	2417' FSL	995' FWL	200' FSL	1004' FWL
3	GUTTERSEN CC32-765	40.28294°N	104.46567°W	2487' FSL	1502' FWL	NESW	4762'	2417' FSL	1639' FWL	200' FSL	1658' FWL
4	GUTTERSEN CC32-755	40.28294°N	104.46559°W	2486' FSL	1524' FWL	NESW	4762'	2417' FSL	2284' FWL	200' FSL	2312' FWL
5	GUTTERSEN CC32-750	40.28294°N	104.46551°W	2486' FSL	1547' FWL	NESW	4762'	2417' FSL	2607' FWL	200' FSL	2639' FWL
6	GUTTERSEN CC29-784	40.28253°N	104.46584°W	2338' FSL	1455' FWL	NESW	4761'	2417' FNL	400' FWL	200' FNL	350' FWL
7	GUTTERSEN CC29-774	40.28253°N	104.46576°W	2338' FSL	1478' FWL	NESW	4762'	2417' FNL	1040' FWL	200' FNL	988' FWL
8	GUTTERSEN CC29-769	40.28253°N	104.46568°W	2337' FSL	1500' FWL	NESW	4762'	2417' FNL	1360' FWL	200' FNL	1306' FWL
9	GUTTERSEN CC29-765	40.28253°N	104.46560°W	2336' FSL	1523' FWL	NESW	4763'	2417' FNL	1680' FWL	200' FNL	1625' FWL
10	GUTTERSEN CC29-755	40.28252°N	104.46552°W	2336' FSL	1545' FWL	NESW	4762'	2417' FNL	2320' FWL	200' FNL	2263' FWL
11	GUTTERSEN CC32-745	40.28286°N	104.45729°W	2428' FSL	1372' FEL	NWSE	4770'	2417' FSL	2284' FEL	200' FSL	2312' FEL
12	GUTTERSEN CC32-735	40.28286°N	104.45721°W	2427' FSL	1349' FEL	NWSE	4770'	2417' FSL	1640' FEL	200' FSL	1658' FEL
13	GUTTERSEN CC32-730	40.28286°N	104.45712°W	2426' FSL	1327' FEL	NWSE	4771'	2417' FSL	1317' FEL	200' FSL	1331' FEL
14	GUTTERSEN CC32-725	40.28286°N	104.45704°W	2426' FSL	1304' FEL	NWSE	4772'	2417' FSL	995' FEL	200' FSL	1004' FEL
15	GUTTERSEN CC32-717	40.28286°N	104.45696°W	2426' FSL	1282' FEL	NESE	4773'	2417' FSL	465' FEL	200' FSL	465' FEL
16	GUTTERSEN CC29-749	40.28245°N	104.45729°W	2278' FSL	1374' FEL	NWSE	4773'	2417' FNL	2570' FEL	200' FNL	2582' FEL
17	GUTTERSEN CC29-744	40.28245°N	104.45721°W	2277' FSL	1352' FEL	NWSE	4773'	2417' FNL	2250' FEL	200' FNL	2263' FEL
18	GUTTERSEN CC29-734	40.28245°N	104.45713°W	2277' FSL	1329' FEL	NWSE	4772'	2417' FNL	1610' FEL	200' FNL	1625' FEL
19	GUTTERSEN CC29-725	40.28245°N	104.45705°W	2276' FSL	1307' FEL	NWSE	4772'	2417' FNL	970' FEL	200' FNL	988' FEL
20	GUTTERSEN CC29-717	40.28245°N	104.45697°W	2276' FSL	1284' FEL	NESE	4772'	2417' FNL	465' FEL	200' FNL	465' FEL



FIELD DATE: 09-22-18	DRAWING DATE: 09-24-18
DRAWN BY: SMF	CHECKED BY: FWM

**SURFACE LOCATION:**  
SEC. 29, T4N, R63W, 6TH P.M.  
WELD COUNTY, COLORADO

PUBLICLY AVAILABLE DATA SOURCES HAVE NOT BEEN INDEPENDENTLY VERIFIED BY ASCENT.

