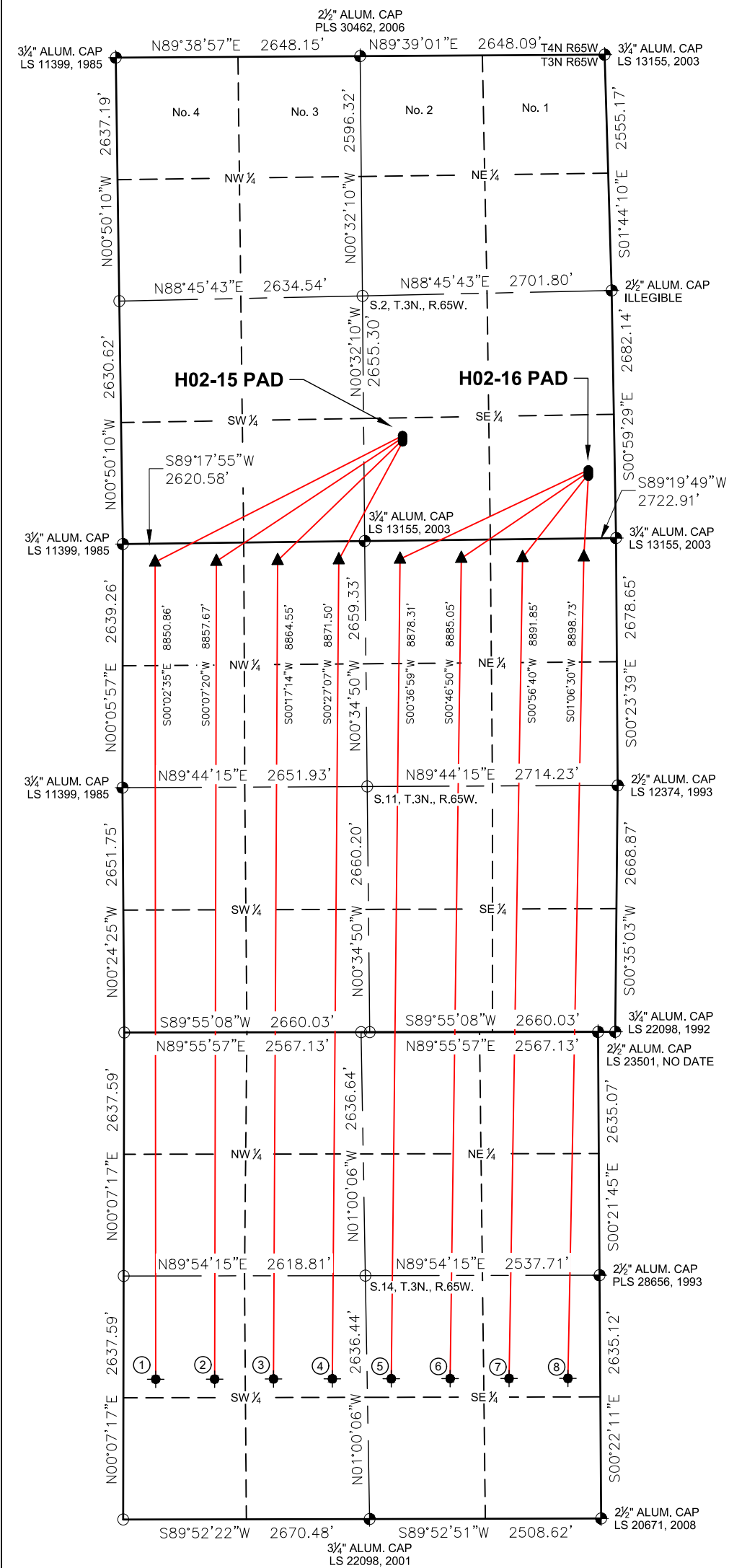
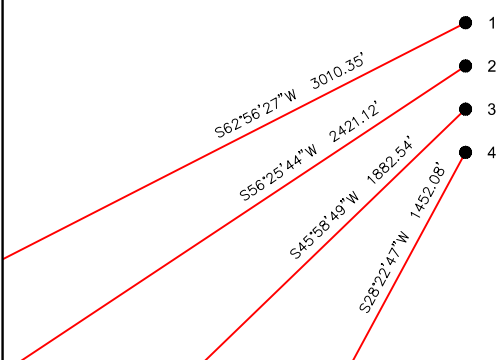


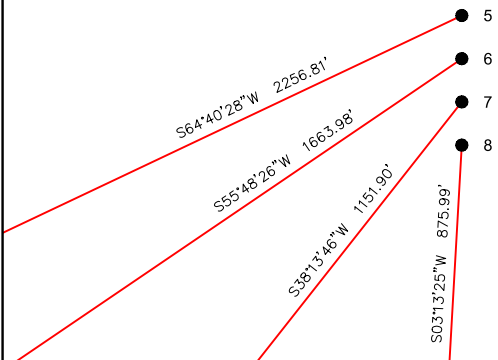
H02-15 PAD & H02-16 PAD
MULTI-WELL LOCATION PLAT / MULTI-WELL PLAN
T3N R65W SECTION 2



PROPOSED WELLBORE DIRECTION DATA
H02-15 PAD
SLOTS 1-4



PROPOSED WELLBORE DIRECTION DATA
H02-16 PAD
SLOTS 5-8



LEGEND

- = FOUND MONUMENT
- = CALCULATED POSITION
- = PROPOSED WELL
- ◆ = BOTTOM HOLE
- ▲ = TOP OF PRODUCTION ZONE

Notes:

1) All bearings are Grid Bearings of the Colorado State Plane Coordinate System, North Zone, North American Datum 1983/2011. The lineal dimensions as shown herein are grid distances based upon the "U.S. Survey Foot." To get ground distances multiply shown distance by 1.0002712.

2) Distances are measured at 90° from section line of the Sixth Principal Meridian, County of Weld, State of Colorado.

3) Ground elevations are based on an observed GPS elevation (NAVD 1988 DATUM).

4) Surface use: "IRRIGATED CROP LAND"

5) Instrument Operator: Ian Carabajal

6) This map does not represent a boundary survey.

DISCLAIMER:
THIS PLOT DOES NOT REPRESENT A MONUMENTED LAND SURVEY AND SHOULD NOT BE RELIED UPON TO DETERMINE BOUNDARY LINES, PROPERTY OWNERSHIP OR OTHER PROPERTY INTERESTS. PARCEL LINES, IF DEPICTED HAVE NOT BEEN FIELD VERIFIED AND MAY BE BASED UPON PUBLICLY AVAILABLE DATA THAT HAS NOT BEEN INDEPENDENTLY VERIFIED.

SURFACE HOLE LOCATION							TOP OF PRODUCTIVE ZONE		BOTTOM HOLE LOCATION	
SLOT	WELL NAME	LATITUDE	LONGITUDE	FOOTAGE		QTR-QTR	ELEV.	FOOTAGE		FOOTAGE
1	ARISTOCRAT H14-785	40.25024°N	104.62891°W	1137' FSL	2293' FEL	SWSE	4780'	200' FNL	350' FWL	1519' FSL
2	ARISTOCRAT H14-775	40.25018°N	104.62891°W	1114' FSL	2293' FEL	SWSE	4781'	200' FNL	1014' FWL	1519' FSL
3	ARISTOCRAT H14-765	40.25012°N	104.62891°W	1092' FSL	2294' FEL	SWSE	4781'	200' FNL	1677' FWL	1519' FSL
4	ARISTOCRAT H14-756	40.25005°N	104.62891°W	1069' FSL	2294' FEL	SWSE	4782'	200' FNL	2341' FWL	1518' FSL
5	ARISTOCRAT H14-744	40.24917°N	104.62171°W	741' FSL	287' FEL	SESE	4820'	200' FNL	2341' FEL	1518' FSL
6	ARISTOCRAT H14-735	40.24910°N	104.62171°W	719' FSL	287' FEL	SESE	4819'	200' FNL	1677' FEL	1518' FSL
7	ARISTOCRAT H14-725	40.24904°N	104.62171°W	696' FSL	287' FEL	SESE	4819'	200' FNL	1014' FEL	1518' FSL
8	ARISTOCRAT H14-715	40.24898°N	104.62171°W	674' FSL	288' FEL	SESE	4819'	200' FNL	350' FEL	1518' FSL

7535 Hilltop Circle
Denver, CO 80221
(303) 928-7128
www.ascentgeomatics.com

FIELD DATE:
08-30-18

DRAWN BY:
VQD

DRAWING DATE:
09-07-18

CHECKED BY:
SMF

SURFACE LOCATION:
SEC. 2, T3N, R65W, 6TH P.M.
WELD COUNTY, COLORADO

PUBLICLY AVAILABLE DATA SOURCES HAVE NOT BEEN INDEPENDENTLY VERIFIED BY ASCENT.