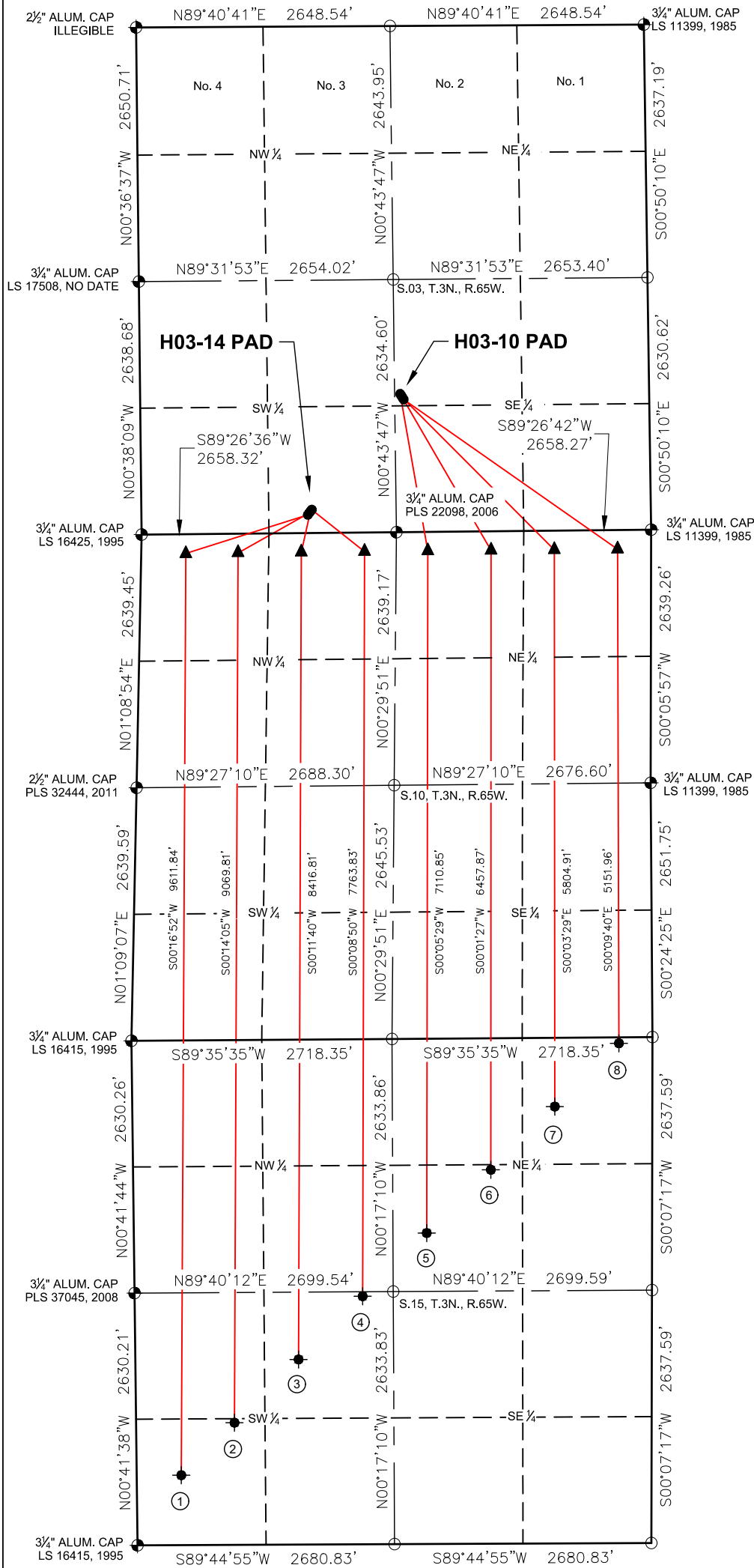
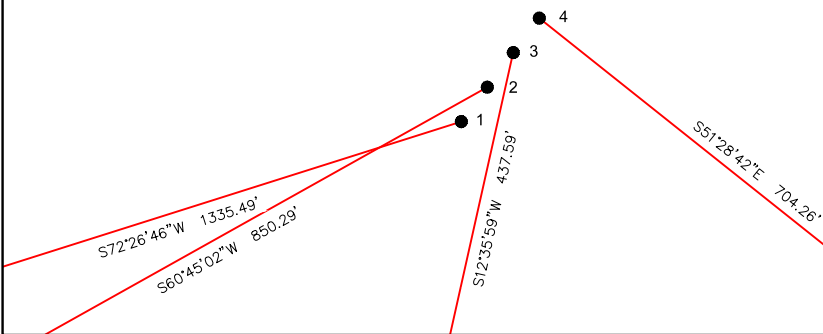


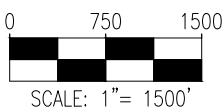
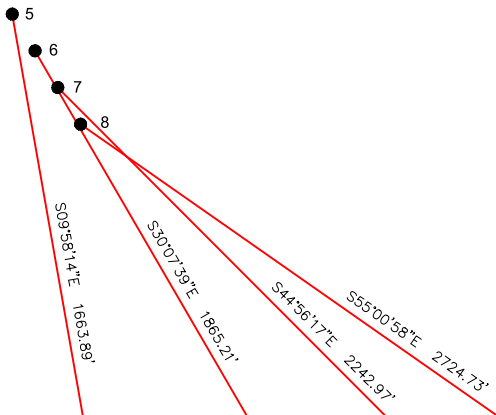
H03-10 PAD & H03-14 PAD  
MULTI-WELL LOCATION PLAT / MULTI-WELL PLAN  
T3N R65W SECTION 3



PROPOSED WELLBORE DIRECTION DATA  
H03-14 PAD  
SLOTS 1-4



PROPOSED WELLBORE DIRECTION DATA  
H03-10 PAD  
SLOTS 5-8



LEGEND

- FOUND MONUMENT
- CALCULATED POSITION
- PROPOSED WELL
- BOTTOM HOLE
- TOP OF PRODUCTION ZONE

Notes:

- All bearings are Grid Bearings of the Colorado State Plane Coordinate System, North Zone, North American Datum 1983/2011. The lineal dimensions as shown herein are grid distances based upon the "U.S. Survey Foot." To get ground distances multiply shown distance by 1.0002678.
- Distances are measured at 90° from section line of the Sixth Principal Meridian, County of Weld, State of Colorado.
- Ground elevations are based on an observed GPS elevation (NAVD 1988 DATUM).
- Surface use: "RECREATION"
- Instrument Operator: Ian Carabajal
- This map does not represent a boundary survey.

DISCLAIMER:  
THIS PLOT DOES NOT REPRESENT A MONUMENTED LAND SURVEY AND SHOULD NOT BE RELIED UPON TO DETERMINE BOUNDARY LINES, PROPERTY OWNERSHIP OR OTHER PROPERTY INTERESTS. PARCEL LINES, IF DEPICTED HAVE NOT BEEN FIELD VERIFIED AND MAY BE BASED UPON PUBLICLY AVAILABLE DATA THAT ALSO HAS NOT BEEN INDEPENDENTLY VERIFIED.

SURFACE HOLE LOCATION							TOP OF PRODUCTIVE ZONE		BOTTOM HOLE LOCATION	
SLOT	WELL NAME	LATITUDE	LONGITUDE	FOOTAGE		QTR-QTR	ELEV.	FOOTAGE		FOOTAGE
1	BEEBE DRAW H15-783	40.24762° N	104.65263° W	190' FSL	1737' FWL	SESW	4804'	200' FNL	465' FWL	729' FSL
2	BEEBE DRAW H15-774	40.24767° N	104.65258° W	208' FSL	1750' FWL	SESW	4804'	200' FNL	1010' FWL	1274' FSL
3	BEEBE DRAW H15-764	40.24772° N	104.65253° W	226' FSL	1764' FWL	SESW	4804'	200' FNL	1669' FWL	1930' FSL
4	BEEBE DRAW H15-754	40.24777° N	104.65248° W	244' FSL	1778' FWL	SESW	4804'	200' FNL	2329' FWL	2586' FSL
5	BEEBE DRAW H15-746	40.25106° N	104.64913° W	1441' FSL	2597' FEL	NWSE	4782'	200' FNL	2330' FEL	2026' FNL
6	BEEBE DRAW H15-736	40.25100° N	104.64909° W	1422' FSL	2586' FEL	NWSE	4783'	200' FNL	1670' FEL	1371' FNL
7	BEEBE DRAW H15-725	40.25095° N	104.64905° W	1403' FSL	2574' FEL	NWSE	4783'	200' FNL	1010' FEL	717' FNL
8	BEEBE DRAW H15-715	40.25090° N	104.64901° W	1384' FSL	2563' FEL	NWSE	4783'	200' FNL	350' FEL	62' FNL

7535 Hilltop Circle  
Denver, CO 80221  
(303) 928-7128  
www.ascentgeomatics.com

FIELD DATE:  
08-30-18

DRAWN BY:  
MJE

DRAWING DATE:  
09-07-18

CHECKED BY:  
SMF

**SURFACE LOCATION:**  
SEC. 03, T3N, R65W, 6TH P.M.  
WELD COUNTY, COLORADO

PUBLICLY AVAILABLE DATA SOURCES HAVE NOT BEEN INDEPENDENTLY VERIFIED BY ASCENT.