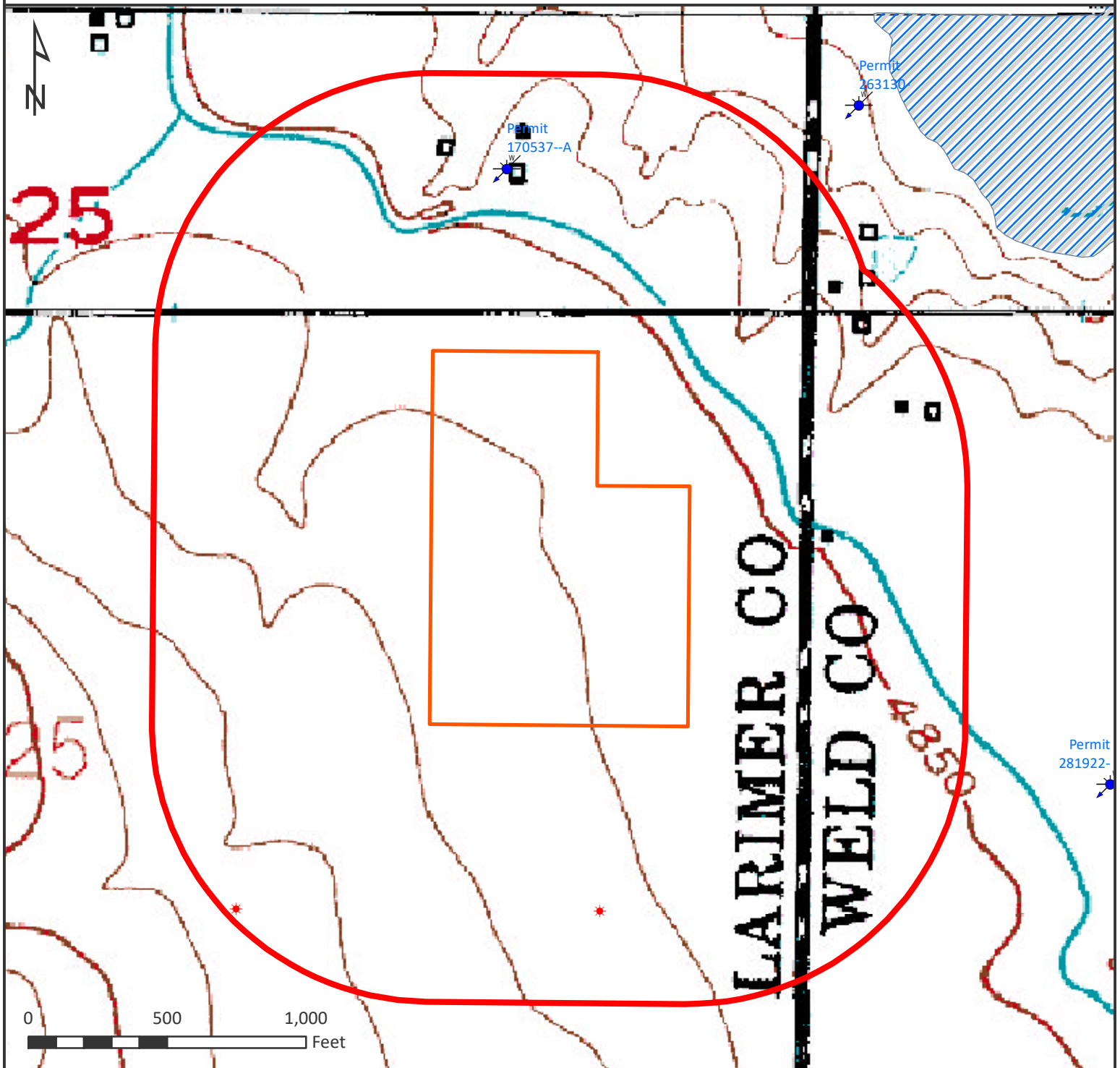


# HYDROLOGY MAP JODSTER SOUTH 24-25HZ



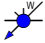




## Nearest Surface Water Features

Hillsboro Ditch: 274' NW Elev: 4849'  
Pond: 990 NW Elev: 4827'

Loc Elev: 4861'

All measurements are made from  
edge of disturbed area.

## Legend

-  WATER WELL
-  100-YR FLOODPLAIN
-  WELL PAD (PROPOSED)
-  1000' BUFFER
-  EXISTING OIL/GAS WELL (COGCC)



Date created: 9/28/2018  
Created by: APC Regulatory GIS  
Scale: 1:6,000  
Projection: NAD83 UTM 13N