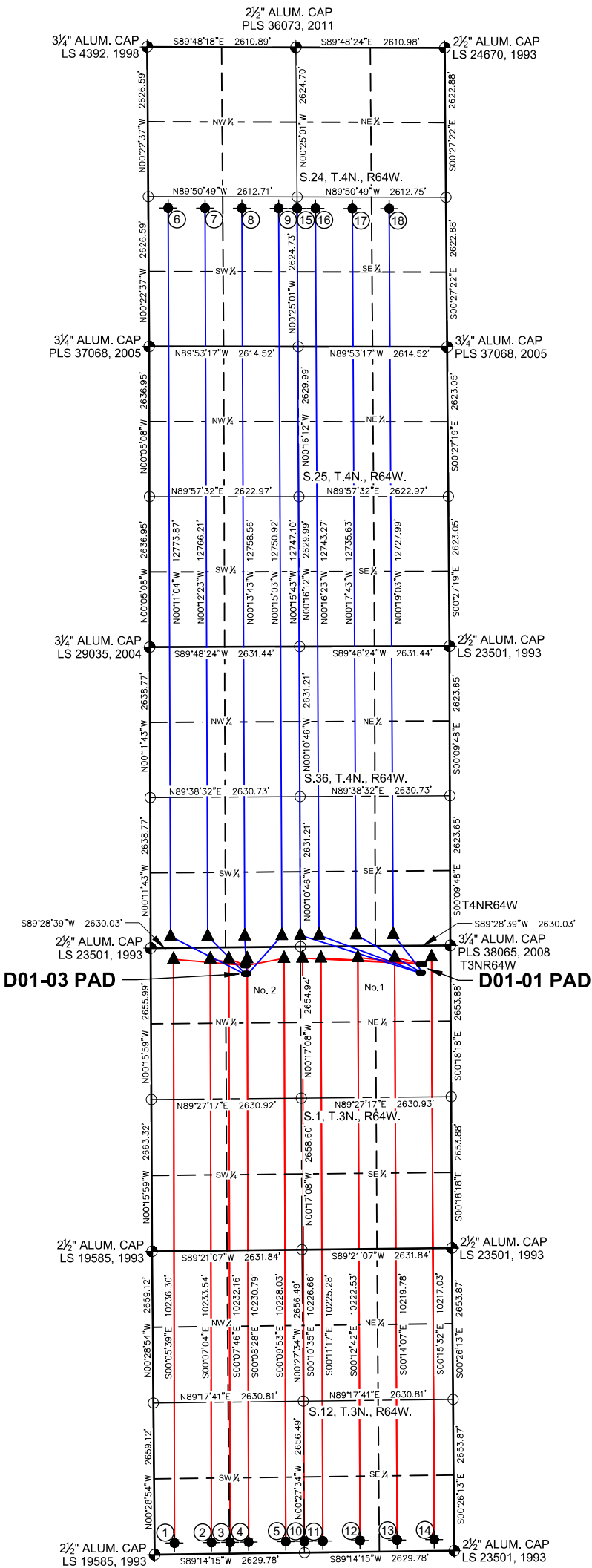
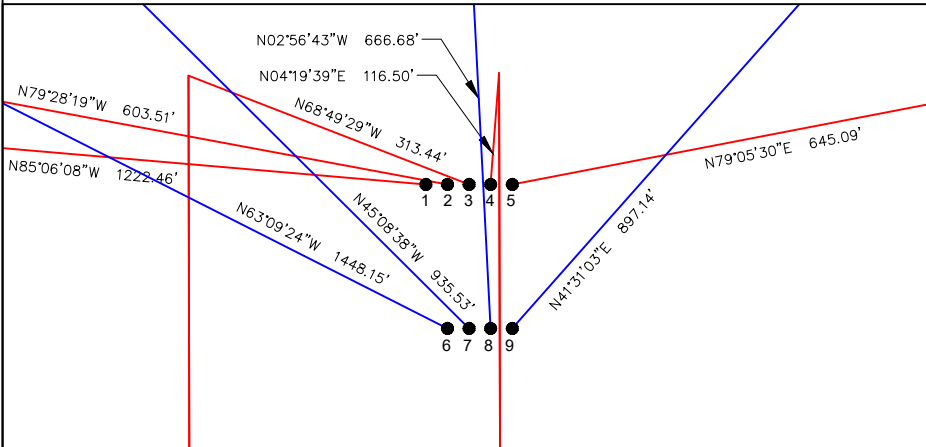


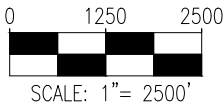
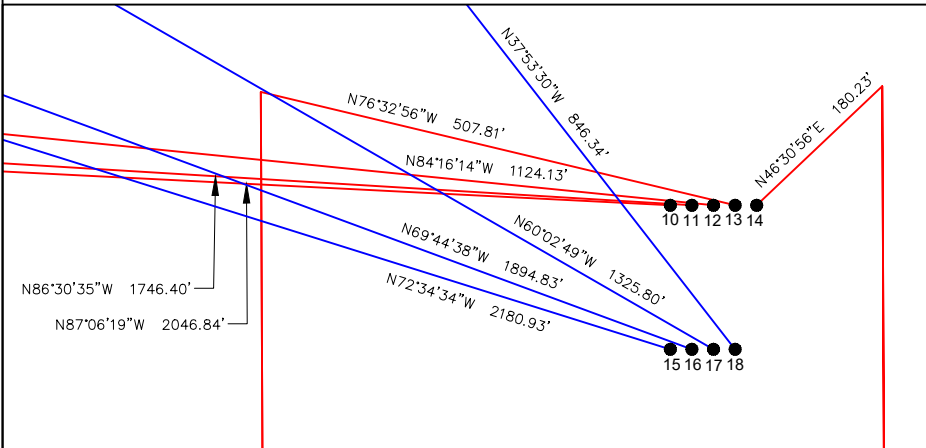
D01-03 PAD & D01-01 PAD
MULTI-WELL LOCATION PLAT / MULTI-WELL PLAN
T3N R64W SECTION 1



PROPOSED WELLBORE DIRECTION DATA
D01-03 PAD
SLOTS 1-9



PROPOSED WELLBORE DIRECTION DATA
D01-01 PAD
SLOTS 10-18



LEGEND

- FOUND MONUMENT
- CALCULATED POSITION
- PROPOSED WELL
- BOTTOM HOLE
- TOP OF PRODUCTION ZONE

- Notes:
- All bearings are Grid Bearings of the Colorado State Plane Coordinate System, North Zone, North American Datum 1983/2011. The lineal dimensions as shown herein are grid distances based upon the "U.S. Survey Foot." To get ground distances multiply shown distance by 1.000265.
 - Distances are measured at 90° from section line of the Sixth Principal Meridian, County of Weld, State of Colorado.
 - Ground elevations are based on an observed GPS elevation (NAVD 1988 DATUM).
 - Surface use: "RANGELAND"
 - Instrument Operator: Dominick Davis
 - This map does not represent a boundary survey.

DISCLAIMER:
THIS PLOT DOES NOT REPRESENT A MONUMENTED LAND SURVEY AND SHOULD NOT BE RELIED UPON TO DETERMINE BOUNDARY LINES, PROPERTY OWNERSHIP OR OTHER PROPERTY INTERESTS. PARCEL LINES, IF DEPICTED HAVE NOT BEEN FIELD VERIFIED AND MAY BE BASED UPON PUBLICLY AVAILABLE DATA THAT ALSO HAS NOT BEEN INDEPENDENTLY VERIFIED.

SURFACE HOLE LOCATION								TOP OF PRODUCTIVE ZONE		BOTTOM HOLE LOCATION	
SLOT	WELL NAME	LATITUDE	LONGITUDE	FOOTAGE		QTR-QTR	ELEV.	FOOTAGE		FOOTAGE	
1	GUTTERSEN D12-785	40.26086°N	104.50303°W	315' FNL	1617' FWL	NO.2	4745'	200' FNL	400' FWL	200' FSL	350' FWL
2	GUTTERSEN D12-775	40.26086°N	104.50295°W	316' FNL	1640' FWL	NO.2	4745'	200' FNL	1047' FWL	200' FSL	1001' FWL
3	GUTTERSEN D12-770	40.26086°N	104.50287°W	316' FNL	1663' FWL	NO.2	4745'	200' FNL	1371' FWL	200' FSL	1327' FWL
4	GUTTERSEN D12-765	40.26086°N	104.50279°W	316' FNL	1685' FWL	NO.2	4745'	200' FNL	1694' FWL	200' FSL	1653' FWL
5	GUTTERSEN D12-755	40.26086°N	104.50271°W	316' FNL	1707' FWL	NO.2	4745'	200' FNL	2341' FWL	200' FSL	2304' FWL
6	GUTTERSEN STATE C36-785	40.26045°N	104.50296°W	466' FNL	1639' FWL	NO.2	4746'	200' FSL	350' FWL	2426' FSL	350' FWL
7	GUTTERSEN STATE C36-775	40.26045°N	104.50288°W	466' FNL	1662' FWL	NO.2	4746'	200' FSL	1001' FWL	2426' FSL	997' FWL
8	GUTTERSEN STATE C36-765	40.26045°N	104.50280°W	466' FNL	1684' FWL	NO.2	4746'	200' FSL	1653' FWL	2425' FSL	1643' FWL
9	GUTTERSEN STATE C36-755	40.26045°N	104.50272°W	466' FNL	1707' FWL	NO.2	4746'	200' FSL	2304' FWL	2425' FSL	2290' FWL
10	GUTTERSEN D12-750	40.26083°N	104.49196°W	322' FNL	551' FEL	NO.1	4761'	200' FNL	2595' FEL	200' FSL	2630' FWL
11	GUTTERSEN D12-745	40.26082°N	104.49188°W	322' FNL	529' FEL	NO.1	4761'	200' FNL	2272' FEL	200' FSL	2304' FEL
12	GUTTERSEN D12-735	40.26082°N	104.49179°W	322' FNL	506' FEL	NO.1	4762'	200' FNL	1624' FEL	200' FSL	1653' FEL
13	GUTTERSEN D12-725	40.26082°N	104.49171°W	323' FNL	484' FEL	NO.1	4762'	200' FNL	977' FEL	200' FSL	1001' FEL
14	GUTTERSEN D12-715	40.26082°N	104.49163°W	323' FNL	461' FEL	NO.1	4762'	200' FNL	330' FEL	200' FSL	350' FEL
15	GUTTERSEN STATE C36-750	40.26041°N	104.49196°W	472' FNL	552' FEL	NO.1	4762'	200' FSL	2630' FWL	2425' FSL	2613' FWL
16	GUTTERSEN STATE C36-745	40.26041°N	104.49188°W	472' FNL	530' FEL	NO.1	4762'	200' FSL	2304' FEL	2424' FSL	2289' FEL
17	GUTTERSEN STATE C36-735	40.26041°N	104.49180°W	472' FNL	507' FEL	NO.1	4762'	200' FSL	1653' FEL	2424' FSL	1643' FEL
18	GUTTERSEN STATE C36-725	40.26041°N	104.49172°W	473' FNL	485' FEL	NO.1	4762'	200' FSL	1001' FEL	2423' FSL	997' FEL



7535 Hilltop Circle
Denver, CO 80221
(303) 928-7128
www.ascentgeomatics.com

FIELD
DATE:
09-22-18

DRAWN BY:
JAG

DRAWING
DATE:
09-27-18

CHECKED BY:
VQD

SURFACE LOCATION:
SEC. 1, T3N, R64W, 6TH P.M.
WELD COUNTY, COLORADO

PUBLICLY AVAILABLE DATA SOURCES HAVE NOT
BEEN INDEPENDENTLY VERIFIED BY ASCENT.



EXHIBIT M

Mustang CDP Econode multi-well facility capable of handling up to 32 wells

