

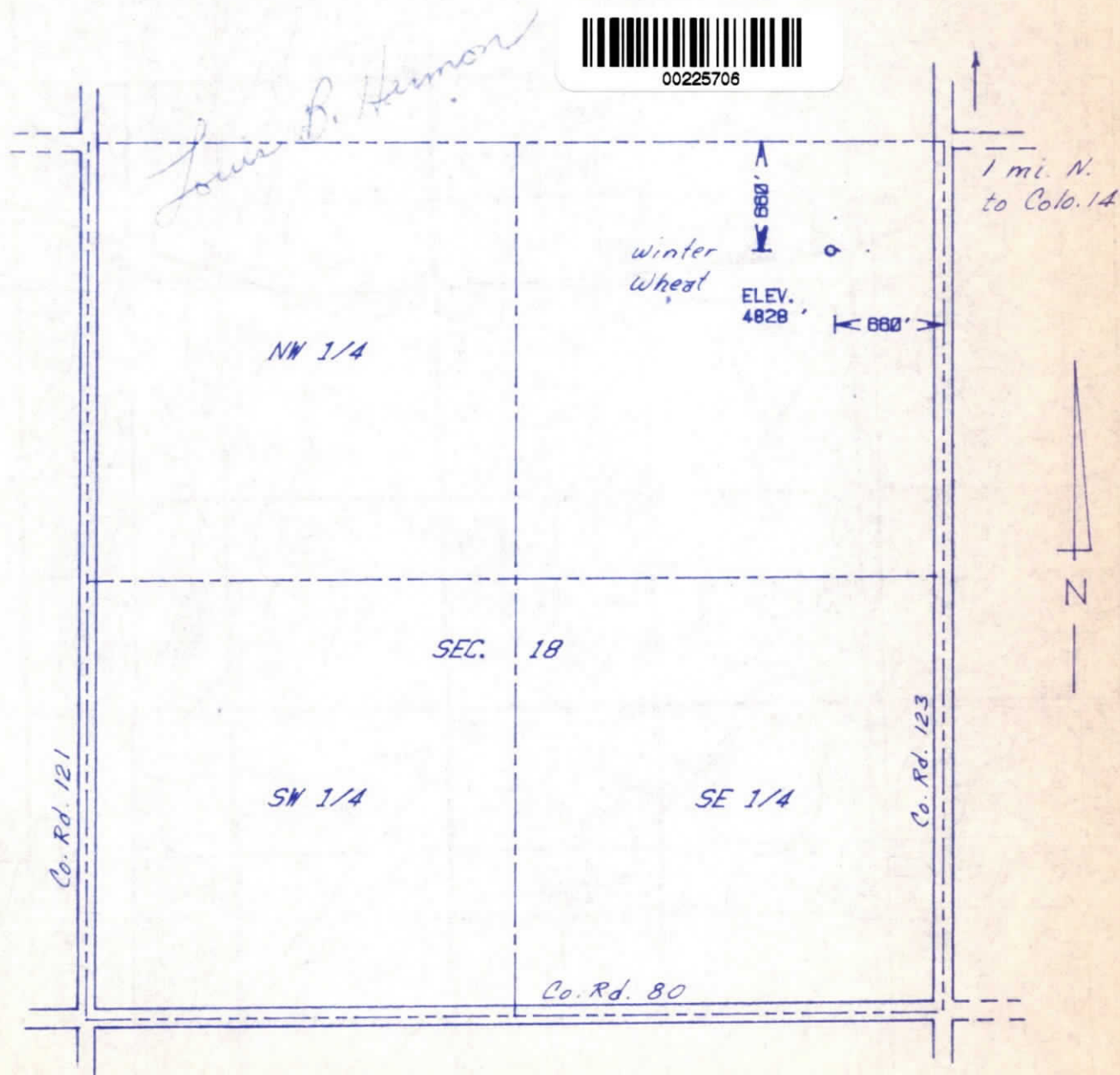
JAN 2 4 1984

The accompanying plat is an accurate representation showing the location of a proposed well. This location may be described as a point 660 feet south of the north line, and 660 feet west of the east line of Section 18, Township 7 N Range 58 W of the 6th P.M., WELD County, COLORADO. The surface elevation at this point is 4828 feet m.s.l.

WELD CO. OIL & GAS CONS. COM.



00225706



SCALE - 1"=1000'

- SURVEYED POINT
- REFERENCE STAKE (200' N, 200' E)
- NE 1/4 SEC. 18, T 7 N, R 58 W

ARMON
ENGINEERING
SERVICES

NICKERSON #1

ENERGY MINERALS CORP.

WELD CO., COLORADO 4 JANUARY 1984

