

**Project:** Weld County, CO  
**Site:** SEC 36 T8N-R67W  
**Well:** Hudson Bay 8-67-36-25N  
**Wellbore:** Original Wellbore  
**Design:** Plan 2

## Reference Details

Geodetic System: US State Plane 1983  
 Datum: North American Datum 1983  
 Ellipsoid: GRS 1980  
 Latitude: 40° 36' 42.145 N  
 Longitude: 104° 50' 38.242 W  
 Grid Convergence: 0.42° West  
 Ground Elevation: 5182.0  
 KB Elevation: KB @ 5198.0usft

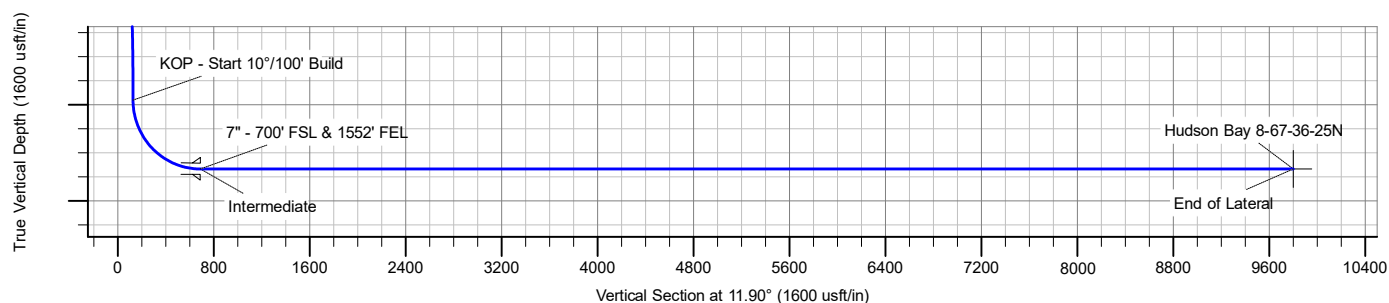
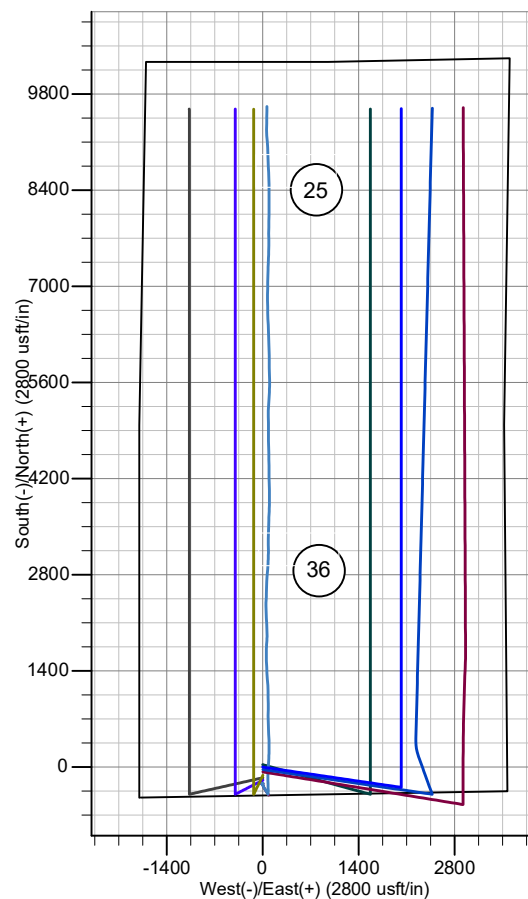
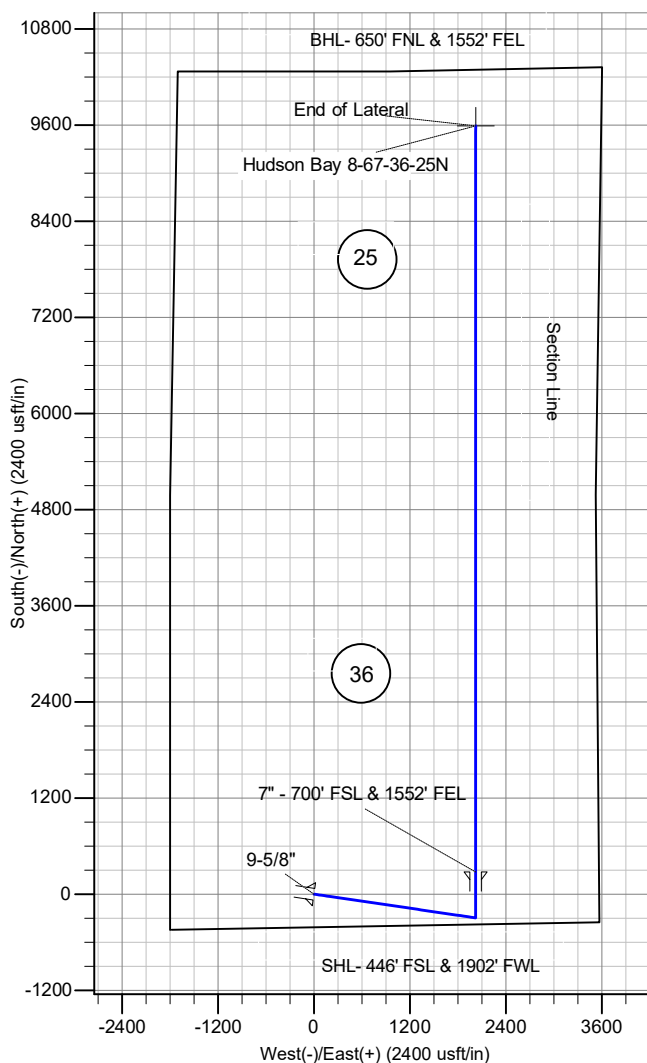
**RPM Consulting, Inc.**  
 1600 Broadway, Suite 1510  
 Denver, CO 80013  
 303-595-7625

## SECTION DETAILS

MD	Inc	Azi	TVD	+N/-S	+E/-W	Dleg	TFace	Vsect
0.0	0.00	0.00	0.0	0.0	0.0	0.00	0.00	0.0
1500.0	0.00	0.00	1500.0	0.0	0.0	0.00	0.00	0.0
1800.7	0.00	0.00	1800.7	0.0	0.0	0.00	0.00	0.0
2800.7	30.00	98.33	2755.6	-37.1	253.2	3.00	98.33	15.9
5862.3	30.00	98.33	5407.1	-258.9	1767.8	0.00	0.00	111.3
6862.3	0.00	0.00	6362.0	-296.0	2021.0	3.00	180.00	127.3
7762.3	90.00	0.00	6935.0	277.0	2021.0	10.00	0.00	687.9
7820.6	90.00	0.00	6935.0	335.3	2021.0	0.00	0.00	744.9
17074.7	90.00	0.00	6935.0	9589.3	2021.5	0.00	0.00	9800.1

## CASING DETAILS

TVD	MD	Name
1500.0	1500.0	Surface
6935.0	7762.3	Intermediate



# **Enerplus Resources (USA) Corporation**

**Weld County, CO  
SEC 36 T8N-R67W  
Hudson Bay 8-67-36-25N**

**Original Wellbore**

**Plan: Plan 2**

## **Standard Planning Report**

**02 August, 2018**

## Planning Report

<b>Database:</b>	EDM Server Database	<b>Local Co-ordinate Reference:</b>	Well Hudson Bay 8-67-36-25N
<b>Company:</b>	Enerplus Resources (USA) Corporation	<b>TVD Reference:</b>	KB @ 5198.0usft
<b>Project:</b>	Weld County, CO	<b>MD Reference:</b>	KB @ 5198.0usft
<b>Site:</b>	SEC 36 T8N-R67W	<b>North Reference:</b>	True
<b>Well:</b>	Hudson Bay 8-67-36-25N	<b>Survey Calculation Method:</b>	Minimum Curvature
<b>Wellbore:</b>	Original Wellbore		
<b>Design:</b>	Plan 2		

<b>Project</b>	Weld County, CO		
<b>Map System:</b>	US State Plane 1983	<b>System Datum:</b>	Mean Sea Level
<b>Geo Datum:</b>	North American Datum 1983		
<b>Map Zone:</b>	Colorado Northern Zone		

Site		SEC 36 T8N-R67W			
Site Position:		Northing:	1,466,395.30 usft	Latitude:	40° 36' 42.491 N
From:	Lat/Long	Easting:	3,182,141.97 usft	Longitude:	104° 50' 38.249 W
Position Uncertainty:	0.0 usft	Slot Radius:	13-3/16 "	Grid Convergence:	0.42 °

Well	Hudson Bay 8-67-36-25N					
Well Position	+N/-S	-35.0 usft	Northing:	1,466,360.32 usft	Latitude:	40° 36' 42.145 N
	+E/-W	0.6 usft	Easting:	3,182,142.78 usft	Longitude:	104° 50' 38.242 W
Position Uncertainty		0.0 usft	Wellhead Elevation:		Ground Level:	5,182.0 usft

<b>Wellbore</b>	Original Wellbore				
<b>Magnetics</b>	<b>Model Name</b>	<b>Sample Date</b>	<b>Declination (°)</b>	<b>Dip Angle (°)</b>	<b>Field Strength (nT)</b>
	IGRF2015	7/31/2018	8.15	66.98	52,362.63238921

<b>Design</b>	Plan 2			
<b>Audit Notes:</b>				
<b>Version:</b>	<b>Phase:</b>	PROTOTYPE	<b>Tie On Depth:</b>	0.0
<b>Vertical Section:</b>	<b>Depth From (TVD) (usft)</b>	<b>+N/-S (usft)</b>	<b>+E/-W (usft)</b>	<b>Direction (°)</b>
	0.0	0.0	0.0	11.90

<b>Plan Survey Tool Program</b>	<b>Date</b>	8/2/2018		
<b>Depth From (usft)</b>	<b>Depth To (usft)</b>	<b>Survey (Wellbore)</b>	<b>Tool Name</b>	<b>Remarks</b>
1	0.0	17,074.7	Plan 2 (Original Wellbore)	MWD
				OWSG MWD - Standard

<b>Plan Sections</b>										
<b>Measured Depth (usft)</b>	<b>Inclination (°)</b>	<b>Azimuth (°)</b>	<b>Vertical Depth (usft)</b>	<b>+N/-S (usft)</b>	<b>+E/-W (usft)</b>	<b>Dogleg Rate (°/100usft)</b>	<b>Build Rate (°/100usft)</b>	<b>Turn Rate (°/100usft)</b>	<b>TFO (°)</b>	<b>Target</b>
0.0	0.00	0.00	0.0	0.0	0.0	0.00	0.00	0.00	0.00	
1,500.0	0.00	0.00	1,500.0	0.0	0.0	0.00	0.00	0.00	0.00	
1,800.7	0.00	0.00	1,800.7	0.0	0.0	0.00	0.00	0.00	0.00	
2,800.7	30.00	98.33	2,755.6	-37.1	253.2	3.00	3.00	0.00	98.33	
5,862.3	30.00	98.33	5,407.1	-258.9	1,767.8	0.00	0.00	0.00	0.00	
6,862.3	0.00	0.00	6,362.0	-296.0	2,021.0	3.00	-3.00	0.00	180.00	
7,762.3	90.00	0.00	6,935.0	277.0	2,021.0	10.00	10.00	0.00	0.00	
7,820.6	90.00	0.00	6,935.0	335.3	2,021.0	0.00	0.00	0.00	0.00	
17,074.7	90.00	0.00	6,935.0	9,589.3	2,021.5	0.00	0.00	0.00	0.00	Hudson Bay 8-67-36-

# Planning Report

<b>Database:</b>	EDM Server Database	<b>Local Co-ordinate Reference:</b>	Well Hudson Bay 8-67-36-25N
<b>Company:</b>	Enerplus Resources (USA) Corporation	<b>TVD Reference:</b>	KB @ 5198.0usft
<b>Project:</b>	Weld County, CO	<b>MD Reference:</b>	KB @ 5198.0usft
<b>Site:</b>	SEC 36 T8N-R67W	<b>North Reference:</b>	True
<b>Well:</b>	Hudson Bay 8-67-36-25N	<b>Survey Calculation Method:</b>	Minimum Curvature
<b>Wellbore:</b>	Original Wellbore		
<b>Design:</b>	Plan 2		

Planned Survey									
Measured Depth (usft)	Inclination (°)	Azimuth (°)	Vertical Depth (usft)	+N/-S (usft)	+E/-W (usft)	Vertical Section (usft)	Dogleg Rate (°/100usft)	Build Rate (°/100usft)	Turn Rate (°/100usft)
0.0	0.00	0.00	0.0	0.0	0.0	0.0	0.00	0.00	0.00
100.0	0.00	0.00	100.0	0.0	0.0	0.0	0.00	0.00	0.00
200.0	0.00	0.00	200.0	0.0	0.0	0.0	0.00	0.00	0.00
300.0	0.00	0.00	300.0	0.0	0.0	0.0	0.00	0.00	0.00
400.0	0.00	0.00	400.0	0.0	0.0	0.0	0.00	0.00	0.00
500.0	0.00	0.00	500.0	0.0	0.0	0.0	0.00	0.00	0.00
600.0	0.00	0.00	600.0	0.0	0.0	0.0	0.00	0.00	0.00
700.0	0.00	0.00	700.0	0.0	0.0	0.0	0.00	0.00	0.00
800.0	0.00	0.00	800.0	0.0	0.0	0.0	0.00	0.00	0.00
900.0	0.00	0.00	900.0	0.0	0.0	0.0	0.00	0.00	0.00
1,000.0	0.00	0.00	1,000.0	0.0	0.0	0.0	0.00	0.00	0.00
1,100.0	0.00	0.00	1,100.0	0.0	0.0	0.0	0.00	0.00	0.00
1,200.0	0.00	0.00	1,200.0	0.0	0.0	0.0	0.00	0.00	0.00
1,300.0	0.00	0.00	1,300.0	0.0	0.0	0.0	0.00	0.00	0.00
1,400.0	0.00	0.00	1,400.0	0.0	0.0	0.0	0.00	0.00	0.00
1,500.0	0.00	0.00	1,500.0	0.0	0.0	0.0	0.00	0.00	0.00
9-5/8" - Surface									
1,600.0	0.00	0.00	1,600.0	0.0	0.0	0.0	0.00	0.00	0.00
1,700.0	0.00	0.00	1,700.0	0.0	0.0	0.0	0.00	0.00	0.00
1,800.0	0.00	0.00	1,800.0	0.0	0.0	0.0	0.00	0.00	0.00
1,800.7	0.00	0.00	1,800.7	0.0	0.0	0.0	0.00	0.00	0.00
Begin Nudge									
1,900.0	2.98	98.33	1,900.0	-0.4	2.6	0.2	3.00	3.00	0.00
2,000.0	5.98	98.33	1,999.6	-1.5	10.3	0.6	3.00	3.00	0.00
2,100.0	8.98	98.33	2,098.8	-3.4	23.2	1.5	3.00	3.00	0.00
2,200.0	11.98	98.33	2,197.1	-6.0	41.2	2.6	3.00	3.00	0.00
2,300.0	14.98	98.33	2,294.3	-9.4	64.2	4.0	3.00	3.00	0.00
2,400.0	17.98	98.33	2,390.2	-13.5	92.3	5.8	3.00	3.00	0.00
2,500.0	20.98	98.33	2,484.5	-18.3	125.3	7.9	3.00	3.00	0.00
2,600.0	23.98	98.33	2,576.9	-23.9	163.1	10.3	3.00	3.00	0.00
2,700.0	26.98	98.33	2,667.1	-30.1	205.7	12.9	3.00	3.00	0.00
2,800.0	29.98	98.33	2,755.0	-37.0	252.8	15.9	3.00	3.00	0.00
2,800.7	30.00	98.33	2,755.6	-37.1	253.2	15.9	2.95	2.95	0.00
Begin Tangent									
2,900.0	30.00	98.33	2,841.6	-44.3	302.3	19.0	0.00	0.00	0.00
3,000.0	30.00	98.33	2,928.2	-51.5	351.8	22.2	0.00	0.00	0.00
3,100.0	30.00	98.33	3,014.8	-58.8	401.2	25.3	0.00	0.00	0.00
3,200.0	30.00	98.33	3,101.4	-66.0	450.7	28.4	0.00	0.00	0.00
3,300.0	30.00	98.33	3,188.0	-73.3	500.2	31.5	0.00	0.00	0.00
3,400.0	30.00	98.33	3,274.6	-80.5	549.7	34.6	0.00	0.00	0.00
3,500.0	30.00	98.33	3,361.2	-87.8	599.1	37.7	0.00	0.00	0.00
3,600.0	30.00	98.33	3,447.8	-95.0	648.6	40.8	0.00	0.00	0.00
3,700.0	30.00	98.33	3,534.4	-102.2	698.1	44.0	0.00	0.00	0.00
3,800.0	30.00	98.33	3,621.0	-109.5	747.6	47.1	0.00	0.00	0.00
3,900.0	30.00	98.33	3,707.6	-116.7	797.0	50.2	0.00	0.00	0.00
4,000.0	30.00	98.33	3,794.3	-124.0	846.5	53.3	0.00	0.00	0.00
4,100.0	30.00	98.33	3,880.9	-131.2	896.0	56.4	0.00	0.00	0.00
4,200.0	30.00	98.33	3,967.5	-138.5	945.4	59.5	0.00	0.00	0.00
4,300.0	30.00	98.33	4,054.1	-145.7	994.9	62.6	0.00	0.00	0.00
4,400.0	30.00	98.33	4,140.7	-153.0	1,044.4	65.8	0.00	0.00	0.00
4,500.0	30.00	98.33	4,227.3	-160.2	1,093.9	68.9	0.00	0.00	0.00
4,600.0	30.00	98.33	4,313.9	-167.5	1,143.3	72.0	0.00	0.00	0.00
4,700.0	30.00	98.33	4,400.5	-174.7	1,192.8	75.1	0.00	0.00	0.00

# Planning Report

<b>Database:</b>	EDM Server Database	<b>Local Co-ordinate Reference:</b>	Well Hudson Bay 8-67-36-25N
<b>Company:</b>	Enerplus Resources (USA) Corporation	<b>TVD Reference:</b>	KB @ 5198.0usft
<b>Project:</b>	Weld County, CO	<b>MD Reference:</b>	KB @ 5198.0usft
<b>Site:</b>	SEC 36 T8N-R67W	<b>North Reference:</b>	True
<b>Well:</b>	Hudson Bay 8-67-36-25N	<b>Survey Calculation Method:</b>	Minimum Curvature
<b>Wellbore:</b>	Original Wellbore		
<b>Design:</b>	Plan 2		

Planned Survey									
Measured Depth (usft)	Inclination (°)	Azimuth (°)	Vertical Depth (usft)	+N/-S (usft)	+E/-W (usft)	Vertical Section (usft)	Dogleg Rate (°/100usft)	Build Rate (°/100usft)	Turn Rate (°/100usft)
4,800.0	30.00	98.33	4,487.1	-181.9	1,242.3	78.2	0.00	0.00	0.00
4,900.0	30.00	98.33	4,573.7	-189.2	1,291.7	81.3	0.00	0.00	0.00
5,000.0	30.00	98.33	4,660.3	-196.4	1,341.2	84.5	0.00	0.00	0.00
5,100.0	30.00	98.33	4,746.9	-203.7	1,390.7	87.6	0.00	0.00	0.00
5,200.0	30.00	98.33	4,833.5	-210.9	1,440.2	90.7	0.00	0.00	0.00
5,300.0	30.00	98.33	4,920.1	-218.2	1,489.6	93.8	0.00	0.00	0.00
5,400.0	30.00	98.33	5,006.7	-225.4	1,539.1	96.9	0.00	0.00	0.00
5,500.0	30.00	98.33	5,093.3	-232.7	1,588.6	100.0	0.00	0.00	0.00
5,600.0	30.00	98.33	5,179.9	-239.9	1,638.1	103.1	0.00	0.00	0.00
5,700.0	30.00	98.33	5,266.5	-247.2	1,687.5	106.3	0.00	0.00	0.00
5,800.0	30.00	98.33	5,353.1	-254.4	1,737.0	109.4	0.00	0.00	0.00
5,862.3	30.00	98.33	5,407.1	-258.9	1,767.8	111.3	0.00	0.00	0.00
5,900.0	28.87	98.33	5,439.9	-261.6	1,786.1	112.5	3.00	-3.00	0.00
6,000.0	25.87	98.33	5,528.7	-268.3	1,831.6	115.3	3.00	-3.00	0.00
6,100.0	22.87	98.33	5,619.8	-274.2	1,872.5	117.9	3.00	-3.00	0.00
6,200.0	19.87	98.33	5,712.9	-279.5	1,908.5	120.2	3.00	-3.00	0.00
6,300.0	16.87	98.33	5,807.8	-284.1	1,939.7	122.1	3.00	-3.00	0.00
6,400.0	13.87	98.33	5,904.2	-287.9	1,965.9	123.8	3.00	-3.00	0.00
6,500.0	10.87	98.33	6,001.8	-291.0	1,987.1	125.1	3.00	-3.00	0.00
6,600.0	7.87	98.33	6,100.5	-293.4	2,003.2	126.1	3.00	-3.00	0.00
6,700.0	4.87	98.33	6,199.9	-295.0	2,014.2	126.8	3.00	-3.00	0.00
6,800.0	1.87	98.33	6,299.7	-295.9	2,020.0	127.2	3.00	-3.00	0.00
6,862.3	0.00	98.33	6,362.0	-296.0	2,021.0	127.3	3.00	-3.00	0.00
KOP - Start 10°/100' Build									
6,900.0	3.77	0.00	6,399.7	-294.8	2,021.0	128.5	9.99	9.99	-260.83
7,000.0	13.77	360.00	6,498.4	-279.5	2,021.0	143.4	10.00	10.00	0.00
7,100.0	23.77	360.00	6,592.9	-247.4	2,021.0	174.8	10.00	10.00	0.00
7,200.0	33.77	360.00	6,680.5	-199.3	2,021.0	221.8	10.00	10.00	0.00
7,300.0	43.77	360.00	6,758.3	-136.8	2,021.0	283.0	10.00	10.00	0.00
7,400.0	53.77	360.00	6,824.2	-61.7	2,021.0	356.5	10.00	10.00	0.00
7,500.0	63.77	360.00	6,875.9	23.7	2,021.0	440.1	10.00	10.00	0.00
7,600.0	73.77	0.00	6,912.1	116.8	2,021.0	531.2	10.00	10.00	0.00
7,700.0	83.77	0.00	6,931.6	214.8	2,021.0	627.0	10.00	10.00	0.00
7,762.3	90.00	360.00	6,935.0	276.9	2,021.0	687.9	10.00	10.00	0.00
7" - 700' FSL & 1552' FEL - Intermediate									
7,800.0	90.00	0.00	6,935.0	314.6	2,021.0	724.8	0.01	0.01	0.00
7,820.6	90.00	0.00	6,935.0	335.3	2,021.0	744.9	0.00	0.00	0.00
7,900.0	90.00	0.00	6,935.0	414.6	2,021.0	822.6	0.00	0.00	0.00
8,000.0	90.00	0.00	6,935.0	514.6	2,021.0	920.5	0.00	0.00	0.00
8,100.0	90.00	0.00	6,935.0	614.6	2,021.0	1,018.3	0.00	0.00	0.00
8,200.0	90.00	0.00	6,935.0	714.6	2,021.0	1,116.2	0.00	0.00	0.00
8,300.0	90.00	0.00	6,935.0	814.6	2,021.0	1,214.0	0.00	0.00	0.00
8,400.0	90.00	0.00	6,935.0	914.6	2,021.0	1,311.9	0.00	0.00	0.00
8,500.0	90.00	0.00	6,935.0	1,014.6	2,021.0	1,409.7	0.00	0.00	0.00
8,600.0	90.00	0.00	6,935.0	1,114.6	2,021.0	1,507.6	0.00	0.00	0.00
8,700.0	90.00	0.00	6,935.0	1,214.6	2,021.0	1,605.4	0.00	0.00	0.00
8,800.0	90.00	0.00	6,935.0	1,314.6	2,021.0	1,703.3	0.00	0.00	0.00
8,900.0	90.00	0.00	6,935.0	1,414.6	2,021.0	1,801.1	0.00	0.00	0.00
9,000.0	90.00	0.00	6,935.0	1,514.6	2,021.0	1,899.0	0.00	0.00	0.00
9,100.0	90.00	0.00	6,935.0	1,614.6	2,021.0	1,996.8	0.00	0.00	0.00
9,200.0	90.00	0.00	6,935.0	1,714.6	2,021.0	2,094.6	0.00	0.00	0.00
9,300.0	90.00	0.00	6,935.0	1,814.6	2,021.0	2,192.5	0.00	0.00	0.00
9,400.0	90.00	0.00	6,935.0	1,914.6	2,021.0	2,290.3	0.00	0.00	0.00
9,500.0	90.00	0.00	6,935.0	2,014.6	2,021.0	2,388.2	0.00	0.00	0.00

## Planning Report

<b>Database:</b>	EDM Server Database	<b>Local Co-ordinate Reference:</b>	Well Hudson Bay 8-67-36-25N
<b>Company:</b>	Enerplus Resources (USA) Corporation	<b>TVD Reference:</b>	KB @ 5198.0usft
<b>Project:</b>	Weld County, CO	<b>MD Reference:</b>	KB @ 5198.0usft
<b>Site:</b>	SEC 36 T8N-R67W	<b>North Reference:</b>	True
<b>Well:</b>	Hudson Bay 8-67-36-25N	<b>Survey Calculation Method:</b>	Minimum Curvature
<b>Wellbore:</b>	Original Wellbore		
<b>Design:</b>	Plan 2		

Planned Survey									
Measured Depth (usft)	Inclination (°)	Azimuth (°)	Vertical Depth (usft)	+N/-S (usft)	+E/-W (usft)	Vertical Section (usft)	Dogleg Rate (°/100usft)	Build Rate (°/100usft)	Turn Rate (°/100usft)
9,600.0	90.00	0.00	6,935.0	2,114.6	2,021.0	2,486.0	0.00	0.00	0.00
9,700.0	90.00	0.00	6,935.0	2,214.6	2,021.0	2,583.9	0.00	0.00	0.00
9,800.0	90.00	0.00	6,935.0	2,314.6	2,021.0	2,681.7	0.00	0.00	0.00
9,900.0	90.00	0.00	6,935.0	2,414.6	2,021.0	2,779.6	0.00	0.00	0.00
10,000.0	90.00	0.00	6,935.0	2,514.6	2,021.0	2,877.4	0.00	0.00	0.00
10,100.0	90.00	0.00	6,935.0	2,614.6	2,021.0	2,975.3	0.00	0.00	0.00
10,200.0	90.00	0.00	6,935.0	2,714.6	2,021.0	3,073.1	0.00	0.00	0.00
10,300.0	90.00	0.00	6,935.0	2,814.6	2,021.0	3,171.0	0.00	0.00	0.00
10,400.0	90.00	0.00	6,935.0	2,914.6	2,021.0	3,268.8	0.00	0.00	0.00
10,500.0	90.00	0.00	6,935.0	3,014.6	2,021.0	3,366.7	0.00	0.00	0.00
10,600.0	90.00	0.00	6,935.0	3,114.6	2,021.0	3,464.5	0.00	0.00	0.00
10,700.0	90.00	0.00	6,935.0	3,214.6	2,021.0	3,562.4	0.00	0.00	0.00
10,800.0	90.00	0.00	6,935.0	3,314.6	2,021.0	3,660.2	0.00	0.00	0.00
10,900.0	90.00	0.00	6,935.0	3,414.6	2,021.0	3,758.1	0.00	0.00	0.00
11,000.0	90.00	0.00	6,935.0	3,514.6	2,021.0	3,855.9	0.00	0.00	0.00
11,100.0	90.00	0.00	6,935.0	3,614.6	2,021.0	3,953.8	0.00	0.00	0.00
11,200.0	90.00	0.00	6,935.0	3,714.6	2,021.0	4,051.6	0.00	0.00	0.00
11,300.0	90.00	0.00	6,935.0	3,814.6	2,021.0	4,149.5	0.00	0.00	0.00
11,400.0	90.00	0.00	6,935.0	3,914.6	2,021.0	4,247.3	0.00	0.00	0.00
11,500.0	90.00	0.00	6,935.0	4,014.6	2,021.0	4,345.2	0.00	0.00	0.00
11,600.0	90.00	0.00	6,935.0	4,114.6	2,021.0	4,443.0	0.00	0.00	0.00
11,700.0	90.00	0.00	6,935.0	4,214.6	2,021.0	4,540.9	0.00	0.00	0.00
11,800.0	90.00	0.00	6,935.0	4,314.6	2,021.0	4,638.7	0.00	0.00	0.00
11,900.0	90.00	0.00	6,935.0	4,414.6	2,021.0	4,736.6	0.00	0.00	0.00
12,000.0	90.00	0.00	6,935.0	4,514.6	2,021.0	4,834.4	0.00	0.00	0.00
12,100.0	90.00	0.00	6,935.0	4,614.6	2,021.0	4,932.3	0.00	0.00	0.00
12,200.0	90.00	0.00	6,935.0	4,714.6	2,021.0	5,030.1	0.00	0.00	0.00
12,300.0	90.00	0.00	6,935.0	4,814.6	2,021.0	5,128.0	0.00	0.00	0.00
12,400.0	90.00	0.00	6,935.0	4,914.6	2,021.0	5,225.8	0.00	0.00	0.00
12,500.0	90.00	0.00	6,935.0	5,014.6	2,021.0	5,323.7	0.00	0.00	0.00
12,600.0	90.00	0.00	6,935.0	5,114.6	2,021.0	5,421.5	0.00	0.00	0.00
12,700.0	90.00	0.00	6,935.0	5,214.6	2,021.0	5,519.4	0.00	0.00	0.00
12,800.0	90.00	0.00	6,935.0	5,314.6	2,021.0	5,617.2	0.00	0.00	0.00
12,900.0	90.00	0.00	6,935.0	5,414.6	2,021.0	5,715.1	0.00	0.00	0.00
13,000.0	90.00	0.00	6,935.0	5,514.6	2,021.0	5,812.9	0.00	0.00	0.00
13,100.0	90.00	0.00	6,935.0	5,614.6	2,021.0	5,910.8	0.00	0.00	0.00
13,200.0	90.00	0.00	6,935.0	5,714.6	2,021.0	6,008.6	0.00	0.00	0.00
13,300.0	90.00	0.00	6,935.0	5,814.6	2,021.0	6,106.5	0.00	0.00	0.00
13,400.0	90.00	0.00	6,935.0	5,914.6	2,021.0	6,204.3	0.00	0.00	0.00
13,500.0	90.00	0.00	6,935.0	6,014.6	2,021.0	6,302.2	0.00	0.00	0.00
13,600.0	90.00	0.00	6,935.0	6,114.6	2,021.0	6,400.0	0.00	0.00	0.00
13,700.0	90.00	0.00	6,935.0	6,214.6	2,021.0	6,497.9	0.00	0.00	0.00
13,800.0	90.00	0.00	6,935.0	6,314.6	2,021.0	6,595.7	0.00	0.00	0.00
13,900.0	90.00	0.00	6,935.0	6,414.6	2,021.0	6,693.6	0.00	0.00	0.00
14,000.0	90.00	0.00	6,935.0	6,514.6	2,021.0	6,791.4	0.00	0.00	0.00
14,100.0	90.00	0.00	6,935.0	6,614.6	2,021.0	6,889.3	0.00	0.00	0.00
14,200.0	90.00	0.00	6,935.0	6,714.6	2,021.0	6,987.1	0.00	0.00	0.00
14,300.0	90.00	0.00	6,935.0	6,814.6	2,021.0	7,085.0	0.00	0.00	0.00
14,400.0	90.00	0.00	6,935.0	6,914.6	2,021.0	7,182.8	0.00	0.00	0.00
14,500.0	90.00	0.00	6,935.0	7,014.6	2,021.0	7,280.7	0.00	0.00	0.00
14,600.0	90.00	0.00	6,935.0	7,114.6	2,021.0	7,378.5	0.00	0.00	0.00
14,700.0	90.00	0.00	6,935.0	7,214.6	2,021.0	7,476.4	0.00	0.00	0.00
14,800.0	90.00	0.00	6,935.0	7,314.6	2,021.0	7,574.2	0.00	0.00	0.00
14,900.0	90.00	0.00	6,935.0	7,414.6	2,021.0	7,672.1	0.00	0.00	0.00

## Planning Report

<b>Database:</b>	EDM Server Database	<b>Local Co-ordinate Reference:</b>	Well Hudson Bay 8-67-36-25N
<b>Company:</b>	Enerplus Resources (USA) Corporation	<b>TVD Reference:</b>	KB @ 5198.0usft
<b>Project:</b>	Weld County, CO	<b>MD Reference:</b>	KB @ 5198.0usft
<b>Site:</b>	SEC 36 T8N-R67W	<b>North Reference:</b>	True
<b>Well:</b>	Hudson Bay 8-67-36-25N	<b>Survey Calculation Method:</b>	Minimum Curvature
<b>Wellbore:</b>	Original Wellbore		
<b>Design:</b>	Plan 2		

Planned Survey										
Measured Depth (usft)	Inclination (°)	Azimuth (°)	Vertical Depth (usft)	+N/-S (usft)	+E/-W (usft)	Vertical Section (usft)	Dogleg Rate (°/100usft)	Build Rate (°/100usft)	Turn Rate (°/100usft)	
15,000.0	90.00	0.00	6,935.0	7,514.6	2,021.0	7,769.9	0.00	0.00	0.00	
15,100.0	90.00	0.00	6,935.0	7,614.6	2,021.0	7,867.8	0.00	0.00	0.00	
15,200.0	90.00	0.00	6,935.0	7,714.6	2,021.0	7,965.6	0.00	0.00	0.00	
15,300.0	90.00	0.00	6,935.0	7,814.6	2,021.0	8,063.5	0.00	0.00	0.00	
15,400.0	90.00	0.00	6,935.0	7,914.6	2,021.0	8,161.3	0.00	0.00	0.00	
15,500.0	90.00	0.00	6,935.0	8,014.6	2,021.0	8,259.2	0.00	0.00	0.00	
15,600.0	90.00	0.00	6,935.0	8,114.6	2,021.0	8,357.0	0.00	0.00	0.00	
15,700.0	90.00	0.00	6,935.0	8,214.6	2,021.0	8,454.9	0.00	0.00	0.00	
15,800.0	90.00	0.00	6,935.0	8,314.6	2,021.0	8,552.7	0.00	0.00	0.00	
15,900.0	90.00	0.00	6,935.0	8,414.6	2,021.0	8,650.6	0.00	0.00	0.00	
16,000.0	90.00	0.00	6,935.0	8,514.6	2,021.0	8,748.4	0.00	0.00	0.00	
16,100.0	90.00	0.00	6,935.0	8,614.6	2,021.0	8,846.3	0.00	0.00	0.00	
16,200.0	90.00	0.00	6,935.0	8,714.6	2,021.0	8,944.1	0.00	0.00	0.00	
16,300.0	90.00	0.00	6,935.0	8,814.6	2,021.0	9,042.0	0.00	0.00	0.00	
16,400.0	90.00	0.00	6,935.0	8,914.6	2,021.0	9,139.8	0.00	0.00	0.00	
16,500.0	90.00	0.00	6,935.0	9,014.6	2,021.0	9,237.7	0.00	0.00	0.00	
16,600.0	90.00	0.00	6,935.0	9,114.6	2,021.0	9,335.5	0.00	0.00	0.00	
16,700.0	90.00	0.00	6,935.0	9,214.6	2,021.0	9,433.3	0.00	0.00	0.00	
16,800.0	90.00	0.00	6,935.0	9,314.6	2,021.0	9,531.2	0.00	0.00	0.00	
16,900.0	90.00	0.00	6,935.0	9,414.6	2,021.0	9,629.0	0.00	0.00	0.00	
17,000.0	90.00	0.00	6,935.0	9,514.6	2,021.0	9,726.9	0.00	0.00	0.00	
17,074.7	90.00	0.00	6,935.0	9,589.3	2,021.0	9,800.0	0.00	0.00	0.00	
End of Lateral										

Design Targets										
Target Name	Dip Angle (°)	Dip Dir. (°)	TVD (usft)	+N/-S (usft)	+E/-W (usft)	Northing (usft)	Easting (usft)	Latitude	Longitude	
- hit/miss target										
- Shape										
Hudson Bay 8-67-36-25I	0.00	0.00	6,935.0	9,589.3	2,021.5	1,475,964.32	3,184,093.33	40° 38' 16.901 N	104° 50' 12.019 W	
- plan misses target center by 0.5usft at 17074.7usft MD (6935.0 TVD, 9589.3 N, 2021.0 E)										
- Point										

Casing Points					
Measured Depth (usft)	Vertical Depth (usft)	Name	Casing Diameter (")	Hole Diameter (")	
1,500.0	1,500.0	Surface	9-5/8	9-5/8	
7,762.3	6,935.0	Intermediate	7	7	

Plan Annotations					
Measured Depth (usft)	Vertical Depth (usft)	Local Coordinates		Comment	
		+N/-S (usft)	+E/-W (usft)		
1,500.0	1,500.0	0.0	0.0	9-5/8"	
1,800.7	1,800.7	0.0	0.0	Begin Nudge	
2,800.7	2,755.6	-37.1	253.2	Begin Tangent	
6,862.3	6,362.0	-296.0	2,021.0	KOP - Start 10°/100' Build	
7,762.3	6,935.0	276.9	2,021.0	7" - 700' FSL & 1552' FEL	
17,074.7	6,935.0	9,589.3	2,021.0	End of Lateral	