

BMP LEGEND

- ST SEDIMENT TRAP
- RRP RIP-RAP PAD
- DD DIVERSION DITCH
- RRB FOR CULVERT PROTECTION
- SM SEEDING AND MULCHING

FINISHED GRADE ELEVATION = 5067.6'

REV: 2 09-13-18 C.IVIE (PAD NAME CHANGE)

- NOTES:**
- Round corners at 35' radius or as needed.
 - Construct diversion ditches as needed.
 - Contours shown at 2' intervals.
 - Cut/Fill slopes 3:1 (Typ.).
 - Underground utilities shown on this sheet are for visualization purposes only; actual locations to be determined prior to construction.

GREAT WESTERN OPERATING COMPANY

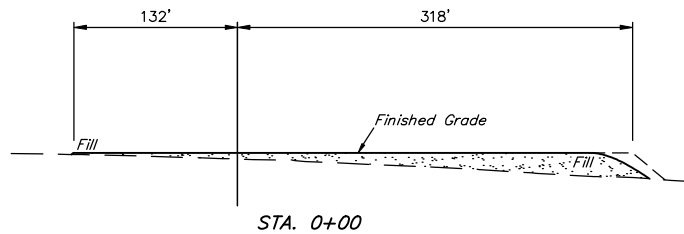
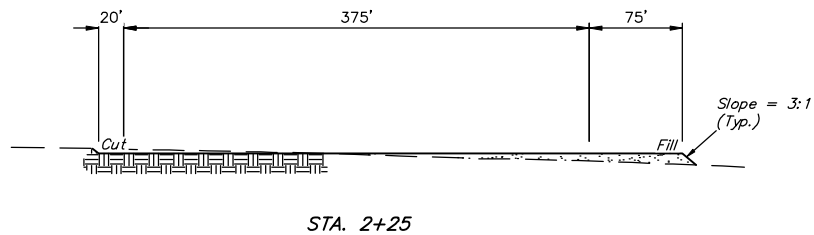
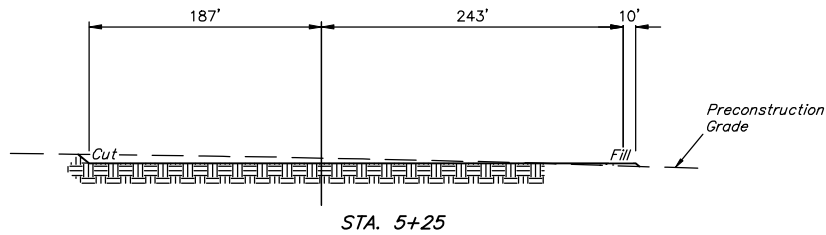
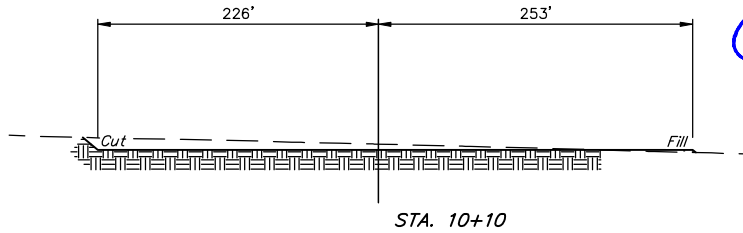
RIO PAD
NW 1/4 NW 1/4, SECTION 6, T1S, R67W, 6th P.M.
ADAMS COUNTY, COLORADO

SURVEYED BY	MATTHEW MILLER, R.W.	06-28-18	SCALE
DRAWN BY	C.IVIE	01-08-18	1" = 100'
CONSTRUCTION LAYOUT		FIGURE #1	



UELS, LLC
Corporate Office * 85 South 200 East
Vernal, UT 84078 * (435) 789-1017

1" = 40'
X-Section
Scale
1" = 100'



APPROXIMATE EARTHWORK QUANTITIES	
(6") TOPSOIL STRIPPING	8,710 Cu. Yds.
REMAINING LOCATION	14,330 Cu. Yds.
TOTAL CUT	23,040 Cu. Yds.
FILL	14,330 Cu. Yds.
EXCESS MATERIAL	8,710 Cu. Yds.
TOPSOIL	8,710 Cu. Yds.
EXCESS UNBALANCE (After Interim Rehabilitation)	0 Cu. Yds.

APPROXIMATE SURFACE DISTURBANCE AREAS		
	DISTANCE	ACRES
WELL SITE DISTURBANCE	NA	±13.835
30' WIDE ACCESS ROAD R-O-W DISTURBANCE	±120'	±0.069
TOTAL SURFACE USE AREA		±13.904

REV: 2 09-13-18 C.IVIE (PAD NAME CHANGE)

NOTES:

- Fill quantity includes 5% for compaction.
- Calculations based on 6" of topsoil stripping.
- Cut/Fill slopes 3:1 (Typ.).

GREAT WESTERN OPERATING COMPANY

RIO PAD
NW 1/4 NW 1/4, SECTION 6, T1S, R67W, 6th P.M.
ADAMS COUNTY, COLORADO

SURVEYED BY	MATTHEW MILLER, R.W.	06-28-18	SCALE
DRAWN BY	C.IVIE	01-08-18	AS SHOWN
CONSTRUCTION LAYOUT CROSS SECTIONS FIGURE #2			



UELS, LLC
Corporate Office * 85 South 200 East
Vernal, UT 84078 * (435) 789-1017