

REV:1 09-13-18 C.IVIE (PAD NAME CHANGE)

LEGEND:

TRUCK ROUTE

GREAT WESTERN OPERATING COMPANY

RIO PAD

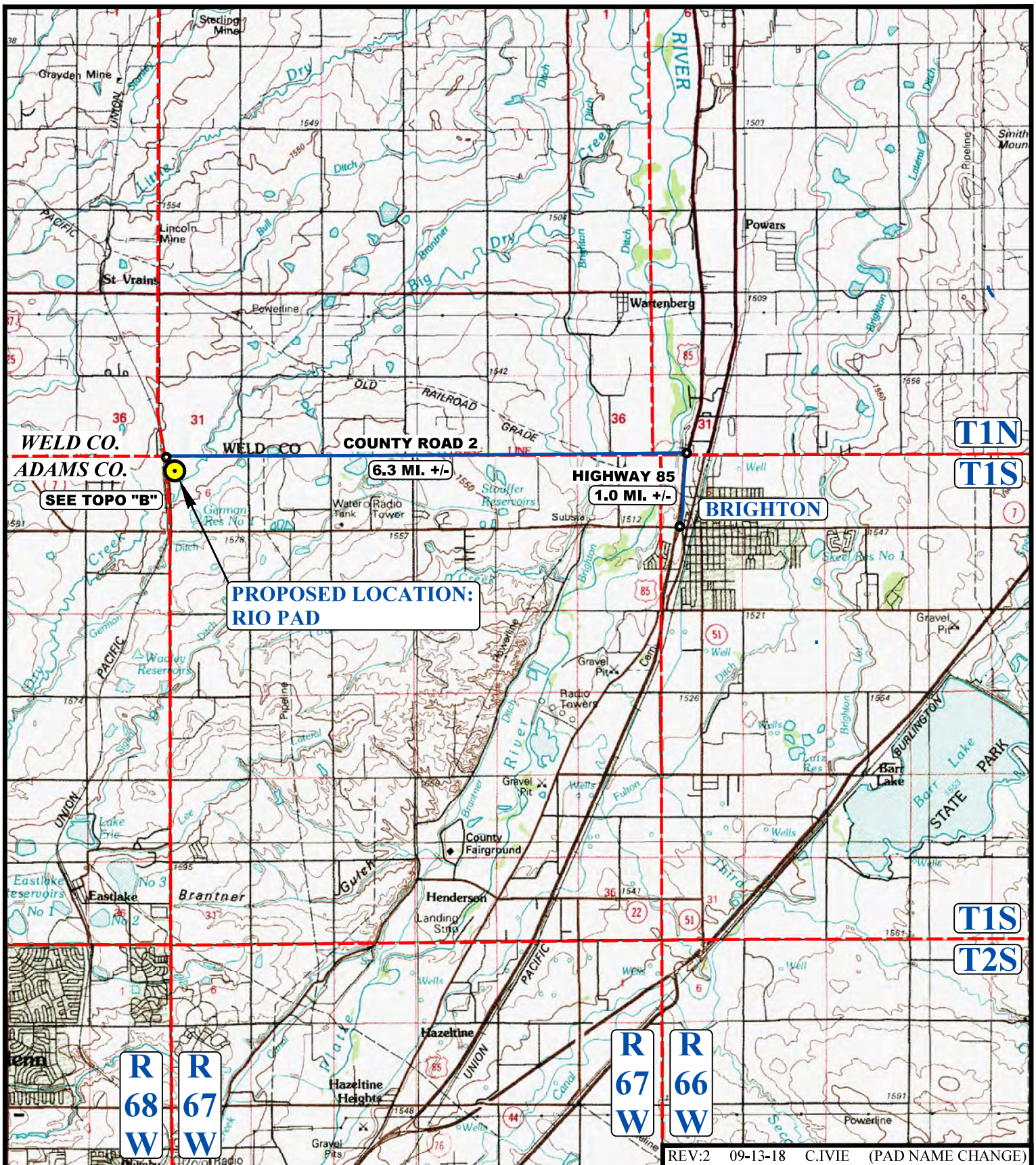
NW 1/4 NW 1/4, SECTION 6, T1S, R67W, 6th P.M.
ADAMS COUNTY, COLORADO

SURVEYED BY	M.M. R.W.	6-28-18	SCALE
DRAWN BY	J.L.G.	07-15-18	1 : 12,000

TRUCK ROUTE MAP

UELS, LLC
Corporate Office * 85 South 200 East
Vernal, UT 84078 * (435) 789-1017





REV:2 09-13-18 C.IVIE (PAD NAME CHANGE)

LEGEND:

 PROPOSED LOCATION



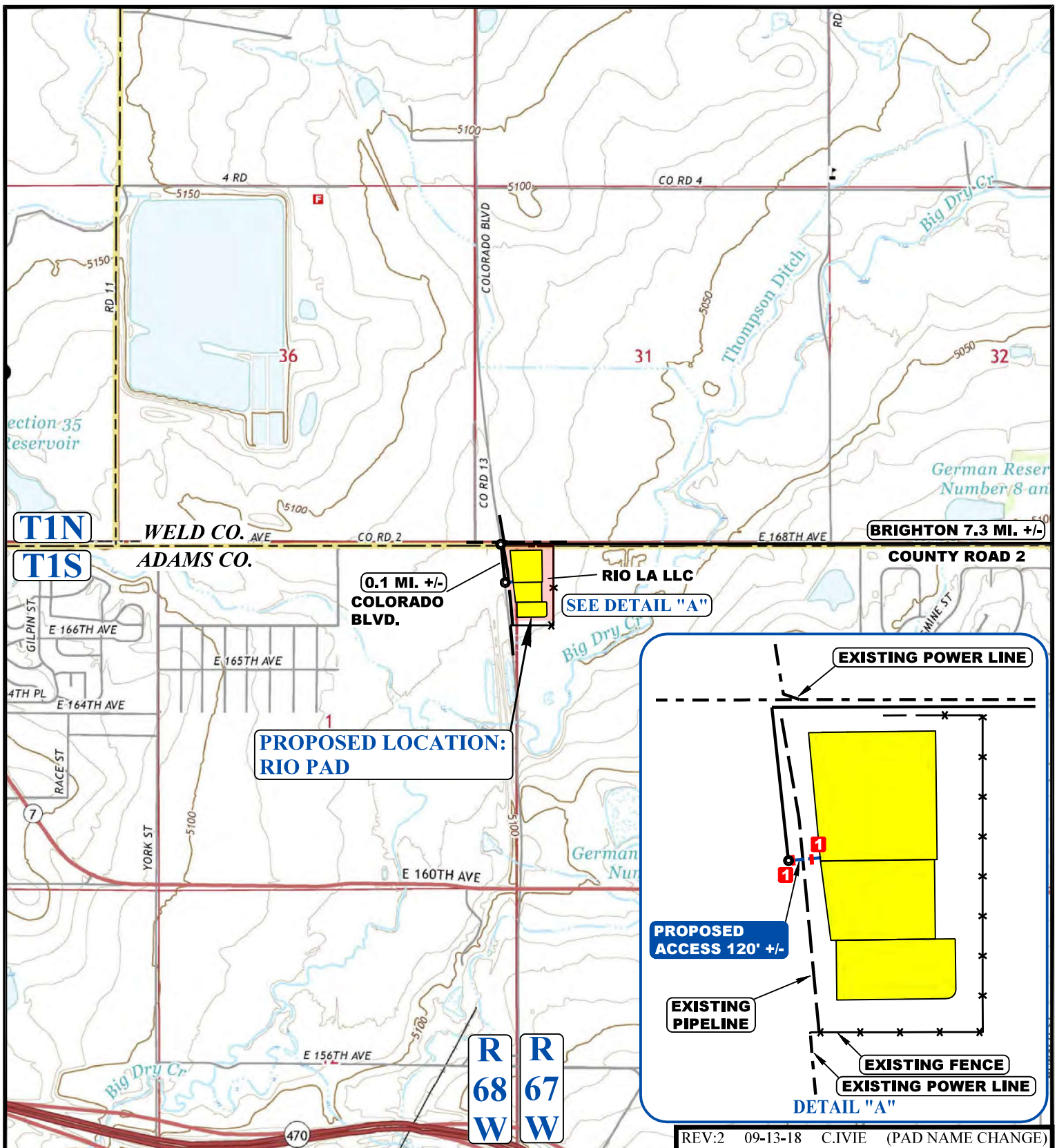
GREAT WESTERN OPERATING COMPANY

RIO PAD
NW 1/4 NW 1/4, SECTION 6, T1S, R67W, 6th P.M.
ADAMS COUNTY, COLORADO



UELS, LLC
Corporate Office * 85 South 200 East
Vernal, UT 84078 * (435) 789-1017

SURVEYED BY	M.M., R.W.	6-28-18	SCALE
DRAWN BY	J.L.G.	01-12-18	1 : 100,000
ACCESS ROAD MAP			TOPO A



NOTE: PARCEL DATA SHOWN HAS BEEN OBTAINED FROM VARIOUS SOURCES AND SHOULD BE USED FOR MAPPING, GRAPHIC AND PLANNING PURPOSES ONLY. NO WARRANTY IS MADE BY UINTAH ENGINEERING AND LAND SURVEYING (UELS) FOR ACCURACY OF THE PARCEL DATA.

LEGEND:

- EXISTING ROAD
- * — EXISTING ROAD
- - - PROPOSED ROAD
- 1 INSTALL 18" CULVERT



GREAT WESTERN OPERATING COMPANY

RIO PAD
NW 1/4 NW 1/4, SECTION 6, T1S, R67W, 6th P.M.
ADAMS COUNTY, COLORADO

SURVEYED BY	M.M., R.W.	6-28-18	SCALE
DRAWN BY	J.L.G.	01-12-18	1 : 24,000
ACCESS ROAD MAP			TOPO B



UELS, LLC
Corporate Office * 85 South 200 East
Vernal, UT 84078 * (435) 789-1017