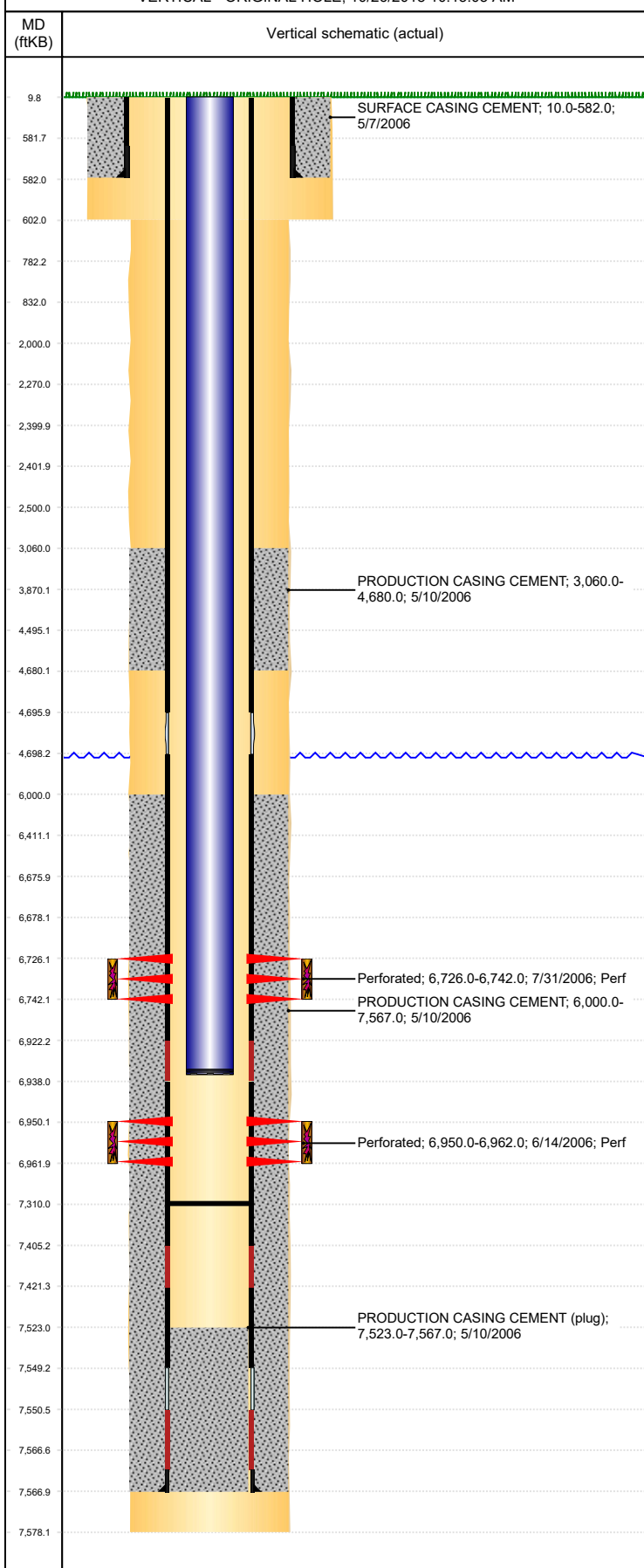


Well Name: DIGGIN STATE D16-07

VERTICAL - ORIGINAL HOLE, 10/26/2018 10:13:05 AM



Well Header									
API 05-123-23715		Business Unit DJ BASIN			District 15		Well Config VERTICAL		
KB - GL / MSL (ft... 10.00		Spud Date 5/6/2006		P & A Date		Well Production Status PR			SoRT No
Comment PUSH FP TO 7310									
Surface Location (Congressional)									
Qtr 3 SW	Qtr 4 NE	Section 16	Twtnshp 3	Twtnsh... N	Range 64	Rng E... W	Actual Latitude (°) 40.22700533	Actual Longitude (°) -104.55416152	
Wellbore Sections									
Section Des			Size (in)			Act Top, MD (ftKB)		Act Btm, MD (ftKB)	
SURFACE			12 1/4			10		602	
PRODUCTION			7 7/8			602		7,578	
Casing Strings									
Csg Des			Run Date		OD (in)	Wt/Len (lb/ft)	Grade	Top, MD (ftKB)	MD (ftKB)
Surface			5/6/2006		8 5/8	24.00	J-55	9.8	582.0
Production			5/10/2006		4 1/2	11.60	M-80	10.0	7,567.0
Cement									
Des					Start Date		Top (ftKB)		Btm (ftKB)
SURFACE CASING CEMENT					5/7/2006		10.0		582.0
PRODUCTION CASING CEMENT					5/10/2006		3,060.0		4,680.0
PRODUCTION CASING CEMENT					5/10/2006		6,000.0		7,567.0
Zone Statuses									
Zone Name		Status Date	Status	Fluid Type	Job				Prod Method
NIOBRARA, ORIGINAL HOLE		8/2/2006	PR		DRILLING/COMPLETION - ORIGINAL, 5/6/2006...				
CODELL, ORIGINAL HOLE		8/2/2006	PR		DRILLING/COMPLETION - ORIGINAL, 5/6/2006...				
Perforation Data									
Linked Zone			Bnch/Stg	Entered Shot Total	Top (ftKB)		Btm (ftKB)		Date
NIOBRARA, ORIGINAL HOLE				96	6,726.00		6,742.00		7/31/2006
CODELL, ORIGINAL HOLE				48	6,950.00		6,962.00		6/14/2006
Stimulation Intervals									
Zone					Start Date		Top (ftKB)		Btm (ftKB)
NIOBRARA, ORIGINAL HOLE					7/31/2006		6,726.0		6,742.0
CODELL, ORIGINAL HOLE					7/31/2006		6,950.0		6,962.0
Other In Hole									
Run Date			Des			OD (in)	Top (ftKB)		Btm (ftKB)
Logs									
Date		Type					Top, MD (ftKB)		Btm, MD (ftKB)
5/10/2006		COMPENSATED DENSITY					2,700.0		7,547.0
5/10/2006		INDUCTION					592.0		7,567.0
6/13/2006		CBL/CCL/GR					5,903.0		7,523.0
1/8/2018		GYRO					12.0		6,850.0
Plug Back Total Depths									
Date		Type			Com				Depth (ftKB)
6/13/2006		FILL			DEPTH LOGGER				7,523.0
9/13/2006		PLUG REMNANTS			PUSH TO 7310', (348' OF RH)				7,310.0