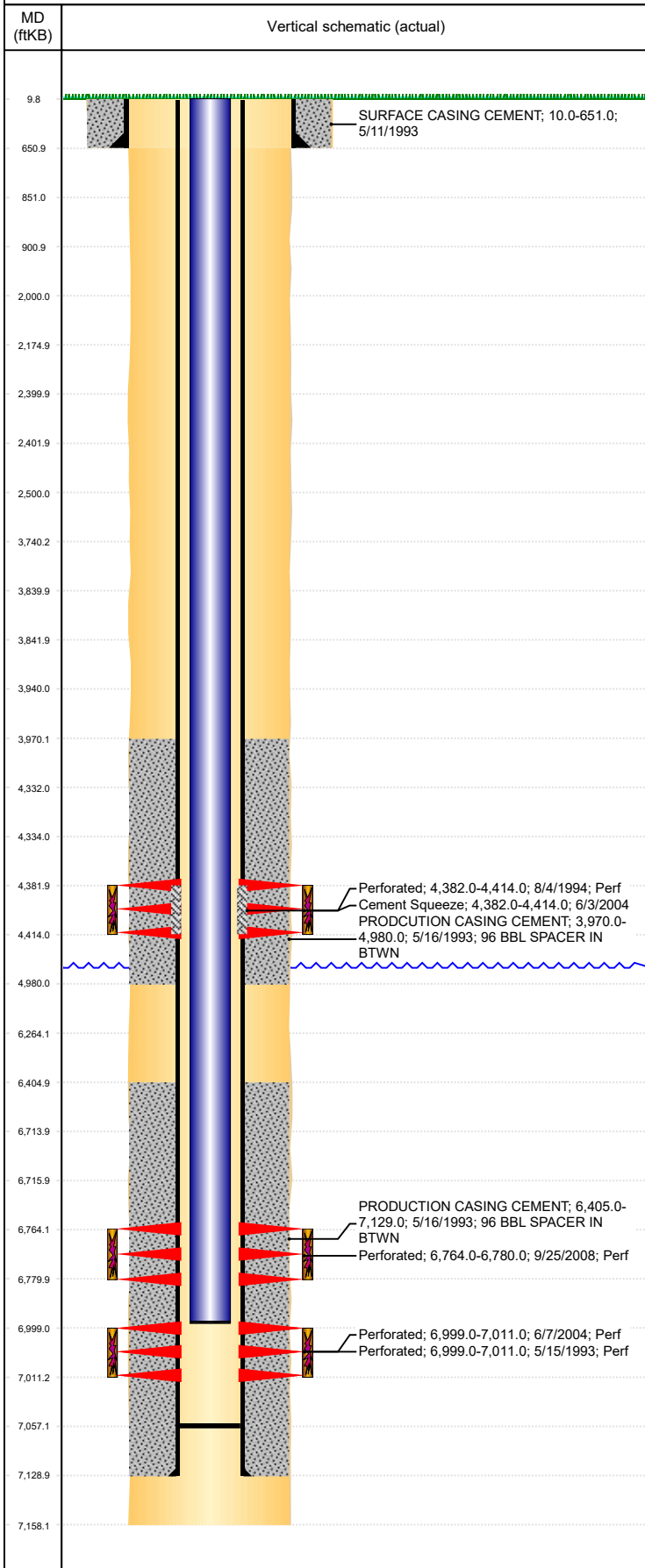


Well Name: CASEY BLUE D21-13

VERTICAL - ORIGINAL HOLE, 10/26/2018 9:38:35 AM



Well Header									
API 05-123-16956		Business Unit DJ BASIN			District 15		Well Config VERTICAL		
KB - GL / MSL (ft... 10.00		Spud Date 5/11/1993		P & A Date		Well Production Status PR			SoRT No
Comment									
Surface Location (Congressional)									
Qtr 3 SW	Qtr 4 SW	Section 21	Twnshp 3	Twnsh... N	Range 64	Rng E/... W	Actual Latitude (°) 40.20530204		Actual Longitude (°) -104.56334146
Wellbore Sections									
Section Des			Size (in)			Act Top, MD (ftKB)		Act Btm, MD (ftKB)	
SURFACE			12 1/4			10		651	
PRODUCTION			7 7/8			651		7,158	
Casing Strings									
Csg Des		Run Date		OD (in)	Wt/Len (lb/ft)	Grade	Top, MD (ftKB)	MD (ftKB)	
Surface		5/11/1993		8 5/8	24.00		10.0	651.0	
Production		5/16/1993		3 1/2	7.70	M-75	10.0	7,129.0	
Cement									
Des				Start Date		Top (ftKB)		Btm (ftKB)	
SURFACE CASING CEMENT				5/11/1993		10.0		651.0	
PRODCUTION CASING CEMENT				5/16/1993		3,970.0		4,980.0	
PRODUCTION CASING CEMENT				5/16/1993		6,405.0		7,129.0	
Cement Squeeze				6/3/2004		4,382.0		4,414.0	
Zone Statuses									
Zone Name		Status Date	Status	Fluid Type	Job			Prod Method	
SUSSEX		9/6/1994	PR		RECOMPLETION, 8/4/1994 00:00				
SUSSEX		6/3/2004	AB		RE-FRAC, 6/1/2004 00:00				
CODELL		6/1/1993	PR		DRILLING/COMPLETION - ORIGINAL, 5/11/1993...				
CODELL		6/14/2004	PR		RE-FRAC, 6/1/2004 00:00				
NIOBRARA		10/29/2008	PR		RECOMPLETION, 9/23/2008 06:00				
Perforation Data									
Linked Zone		Bnch/Stg	Entered Shot Total	Top (ftKB)		Btm (ftKB)		Date	
SUSSEX, ORIGINAL HOLE			14	4,382.00		4,414.00		8/4/1994	
NIOBRARA, ORIGINAL HOLE			64	6,764.00		6,780.00		9/25/2008	
CODELL, ORIGINAL HOLE			48	6,999.00		7,011.00		6/7/2004	
CODELL, ORIGINAL HOLE			48	6,999.00		7,011.00		5/15/1993	
Stimulation Intervals									
Zone			Start Date			Top (ftKB)		Btm (ftKB)	
SUSSEX, ORIGINAL HOLE			8/15/1994			4,382.0		4,414.0	
NIOBRARA, ORIGINAL HOLE			10/22/2008			6,764.0		6,780.0	
CODELL, ORIGINAL HOLE			5/19/1993			6,999.0		7,011.0	
CODELL, ORIGINAL HOLE			6/11/2004			6,999.0		7,011.0	
Other In Hole									
Run Date		Des				OD (in)	Top (ftKB)	Btm (ftKB)	
Logs									
Date		Type				Top, MD (ftKB)		Btm, MD (ftKB)	
5/16/1993		Compensated Density				3,800.0		7,170.0	
5/16/1993		Induction				3,800.0		7,170.0	
5/19/1993		Cement Bond				3,820.0		7,108.0	
7/15/2017		GYRO				0.0		6,900.0	
Plug Back Total Depths									
Date		Type		Com				Depth (ftKB)	
5/16/1993		GUIDE SHOE		FLOAT SHOE @ 7126'				7,126.0	
6/16/2004		FILL		C/O & LANDED TBG				7,057.0	