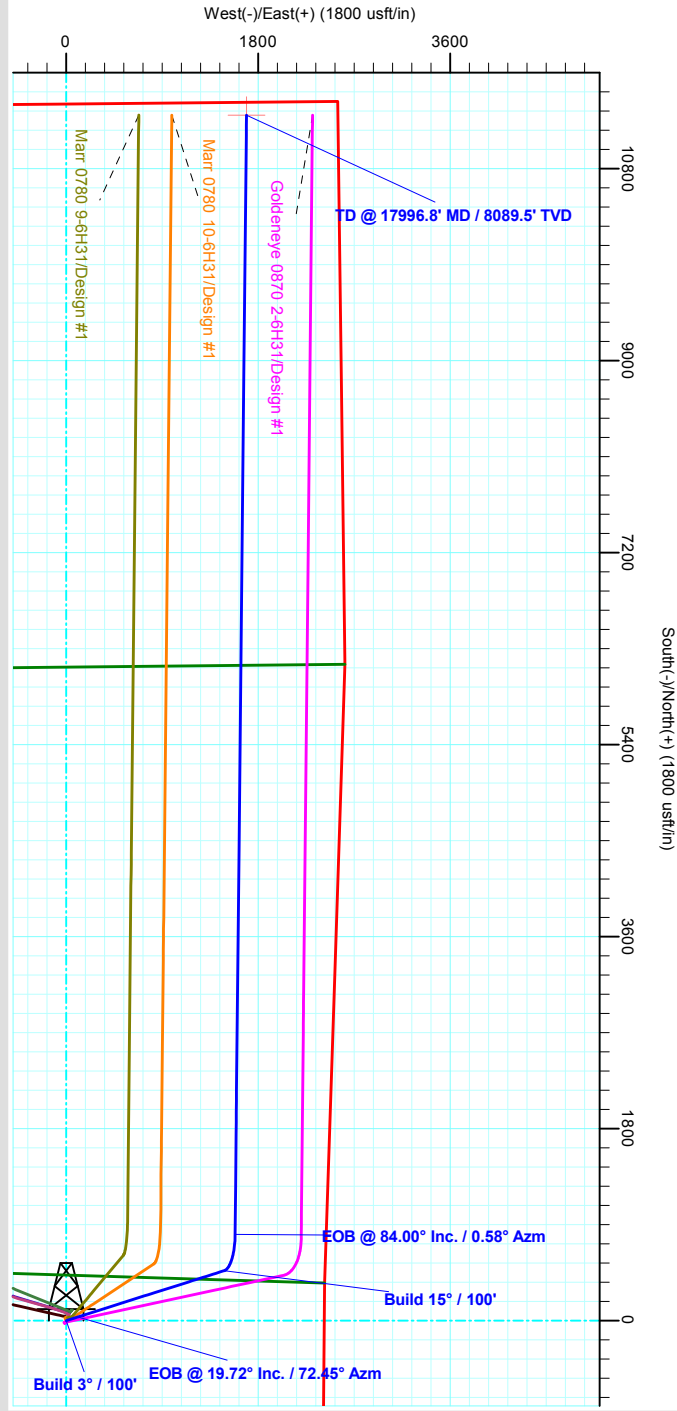
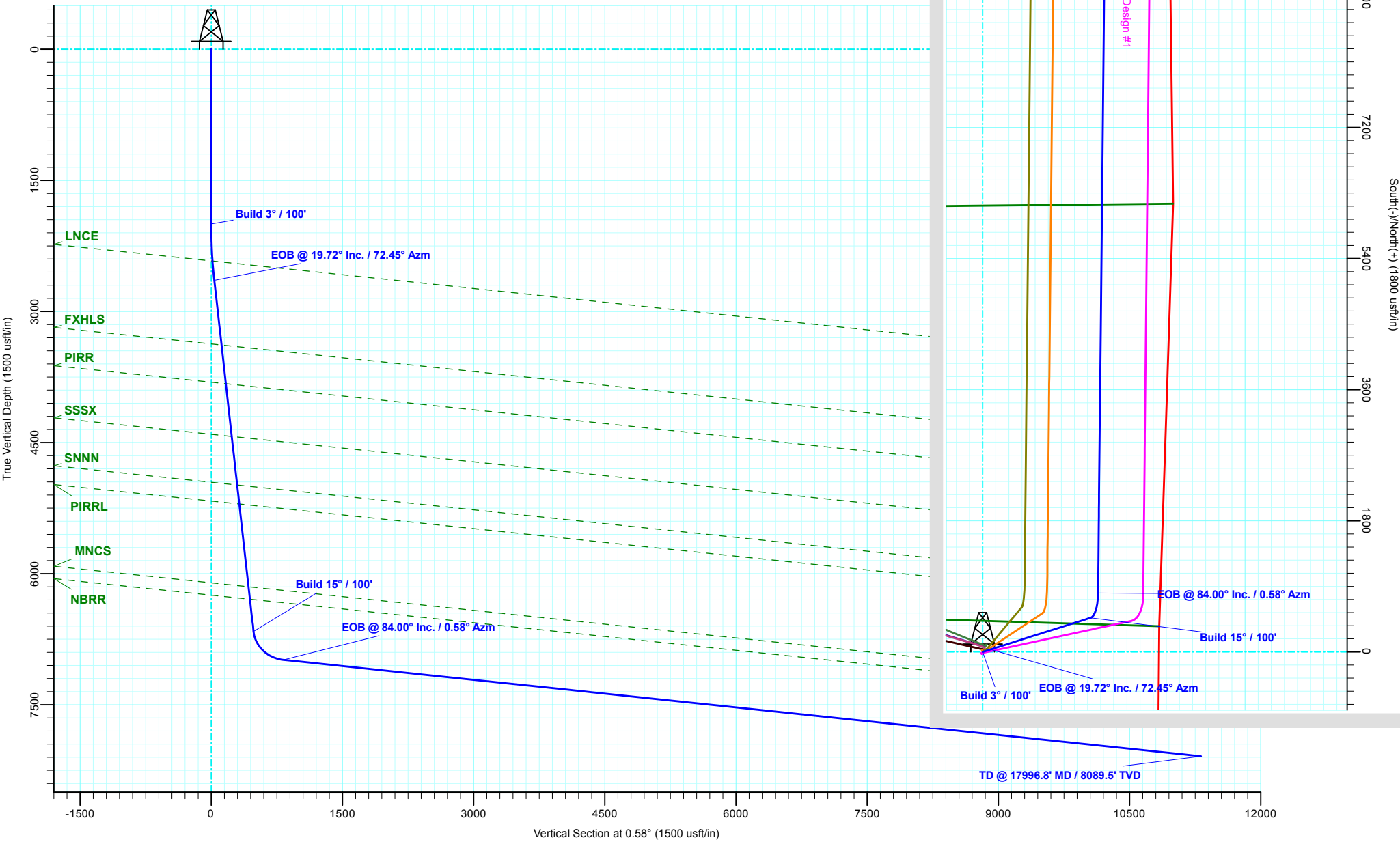


SandRidge Energy  
Jackson County, Colorado  
Sec 7, T7N, R80W, 6th PM  
Goldeneye 0780 1-6H31  
Design #1  
Cyclone #33



ANNOTATIONS									
MD	Inc	Azi	TVD	+N/-S	+E/-W	V/Sect	Departure	Annotation	
2000.0	0.00	0.00	2000.0	0.0	0.0	0.0	0.0	Build 3° / 100'	
2657.5	19.72	72.45	2644.6	33.8	106.8	34.9	112.1	EOB @ 19.72° Inc. / 72.45° Azm	
6924.8	19.73	72.45	6661.5	468.1	1480.1	483.1	1552.3	Build 15° / 100'	
7446.8	84.00	0.58	6986.7	809.0	1583.3	825.0	1922.3	EOB @ 84.00° Inc. / 0.58° Azm	
17996.8	84.00	0.58	8089.5	11300.7	1689.5	11317.2	12414.5	TD @ 17996.8' MD / 8089.5' TVD	

WELL DETAILS: Goldeneye 0780 1-6H31						
+N/-S	+E/-W	Northing	Easting	8130.0	Latitude	Longitude
0.0	0.0	1462110.28	2745725.67		40° 35' 53.833 N	106° 24' 56.428 W



# **SandRidge Energy**

**Jackson County, Colorado  
Sec 7, T7N, R80W, 6th PM  
Goldeneye 0780 1-6H31**

**Wellbore #1**

**Plan: Design #1**

## **QES Well Planning Report**

**13 September, 2018**



# Well Planning Report



<b>Database:</b>	EDM 5000.1 Single User Db	<b>Local Co-ordinate Reference:</b>	Well Goldeneye 0780 1-6H31
<b>Company:</b>	SandRidge Energy	<b>TVD Reference:</b>	RKB @ 8156.0usft (Cyclone #33)
<b>Project:</b>	Jackson County, Colorado	<b>MD Reference:</b>	RKB @ 8156.0usft (Cyclone #33)
<b>Site:</b>	Sec 7, T7N, R80W, 6th PM	<b>North Reference:</b>	Grid
<b>Well:</b>	Goldeneye 0780 1-6H31	<b>Survey Calculation Method:</b>	Minimum Curvature
<b>Wellbore:</b>	Wellbore #1		
<b>Design:</b>	Design #1		

Project	Jackson County, Colorado		
Map System:	US State Plane 1983	System Datum:	Mean Sea Level
Geo Datum:	North American Datum 1983		
Map Zone:	Colorado Northern Zone		

Site		Sec 7, T7N, R80W, 6th PM			
Site Position:		Northing:	1,461,937.18 usft	Latitude:	40° 35' 51.852 N
From:	Map	Easting:	2,743,084.61 usft	Longitude:	106° 25' 30.641 W
Position Uncertainty:	0.0 usft	Slot Radius:	13-3/16 "	Grid Convergence:	-0.60 °

Well	Goldeneye 0780 1-6H31					
Well Position	+N/-S	173.1 usft	Northing:	1,462,110.28 usft	Latitude:	40° 35' 53.833 N
	+E/-W	2,641.1 usft	Easting:	2,745,725.67 usft	Longitude:	106° 24' 56.428 W
Position Uncertainty	0.0 usft		Wellhead Elevation:		Ground Level:	8,130.0 usft

Wellbore	Wellbore #1				
Magnetics	Model Name	Sample Date	Declination (°)	Dip Angle (°)	Field Strength (nT)
	IGRF2015	9/13/2018	8.95	66.72	52,146.00121350

Design	Design #1			
Audit Notes:				
Version:	Phase:	PLAN	Tie On Depth:	0.0
Vertical Section:	Depth From (TVD) (usft)	+N/-S (usft)	+E/-W (usft)	Direction (°)
	0.0	0.0	0.0	0.58

Plan Sections										
Measured Depth (usft)	Inclination (°)	Azimuth (°)	Vertical Depth (usft)	+N/-S (usft)	+E/-W (usft)	Dogleg Rate (°/100usft)	Build Rate (°/100usft)	Turn Rate (°/100usft)	TFO (°)	Target
0.0	0.00	0.00	0.0	0.0	0.0	0.00	0.00	0.00	0.00	
2,000.0	0.00	0.00	2,000.0	0.0	0.0	0.00	0.00	0.00	0.00	
2,657.5	19.73	72.45	2,644.6	33.8	106.9	3.00	3.00	0.00	72.45	
6,924.8	19.73	72.45	6,661.5	468.1	1,480.1	0.00	0.00	0.00	0.00	
7,446.8	84.00	0.58	6,986.7	809.0	1,583.3	15.00	12.31	-13.77	-74.84	
17,996.8	84.00	0.58	8,089.5	11,300.7	1,689.5	0.00	0.00	0.00	0.00	PBHL - Goldeneye

## Well Planning Report



**Database:** EDM 5000.1 Single User Db  
**Company:** SandRidge Energy  
**Project:** Jackson County, Colorado  
**Site:** Sec 7, T7N, R80W, 6th PM  
**Well:** Goldeneye 0780 1-6H31  
**Wellbore:** Wellbore #1  
**Design:** Design #1

**Local Co-ordinate Reference:**  
**TVD Reference:**  
**MD Reference:**  
**North Reference:**  
**Survey Calculation Method:**

Well Goldeneye 0780 1-6H31  
 RKB @ 8156.0usft (Cyclone #33)  
 RKB @ 8156.0usft (Cyclone #33)  
 Grid  
 Minimum Curvature

## Planned Survey

Measured Depth (usft)	Inclination (°)	Azimuth (°)	Vertical Depth (usft)	+N/-S (usft)	+E/-W (usft)	Vertical Section (usft)	Dogleg Rate (°/100usft)	Build Rate (°/100usft)	Turn Rate (°/100usft)
0.0	0.00	0.00	0.0	0.0	0.0	0.0	0.00	0.00	0.00
100.0	0.00	0.00	100.0	0.0	0.0	0.0	0.00	0.00	0.00
200.0	0.00	0.00	200.0	0.0	0.0	0.0	0.00	0.00	0.00
300.0	0.00	0.00	300.0	0.0	0.0	0.0	0.00	0.00	0.00
400.0	0.00	0.00	400.0	0.0	0.0	0.0	0.00	0.00	0.00
500.0	0.00	0.00	500.0	0.0	0.0	0.0	0.00	0.00	0.00
600.0	0.00	0.00	600.0	0.0	0.0	0.0	0.00	0.00	0.00
700.0	0.00	0.00	700.0	0.0	0.0	0.0	0.00	0.00	0.00
800.0	0.00	0.00	800.0	0.0	0.0	0.0	0.00	0.00	0.00
900.0	0.00	0.00	900.0	0.0	0.0	0.0	0.00	0.00	0.00
1,000.0	0.00	0.00	1,000.0	0.0	0.0	0.0	0.00	0.00	0.00
1,100.0	0.00	0.00	1,100.0	0.0	0.0	0.0	0.00	0.00	0.00
1,200.0	0.00	0.00	1,200.0	0.0	0.0	0.0	0.00	0.00	0.00
1,300.0	0.00	0.00	1,300.0	0.0	0.0	0.0	0.00	0.00	0.00
1,400.0	0.00	0.00	1,400.0	0.0	0.0	0.0	0.00	0.00	0.00
1,500.0	0.00	0.00	1,500.0	0.0	0.0	0.0	0.00	0.00	0.00
1,600.0	0.00	0.00	1,600.0	0.0	0.0	0.0	0.00	0.00	0.00
1,700.0	0.00	0.00	1,700.0	0.0	0.0	0.0	0.00	0.00	0.00
1,800.0	0.00	0.00	1,800.0	0.0	0.0	0.0	0.00	0.00	0.00
1,900.0	0.00	0.00	1,900.0	0.0	0.0	0.0	0.00	0.00	0.00
<b>Build 3° / 100'</b>									
2,000.0	0.00	0.00	2,000.0	0.0	0.0	0.0	0.00	0.00	0.00
2,100.0	3.00	72.45	2,100.0	0.8	2.5	0.8	3.00	3.00	0.00
2,200.0	6.00	72.45	2,199.6	3.2	10.0	3.3	3.00	3.00	0.00
2,300.0	9.00	72.45	2,298.8	7.1	22.4	7.3	3.00	3.00	0.00
2,400.0	12.00	72.45	2,397.1	12.6	39.8	13.0	3.00	3.00	0.00
<b>LNCE</b>									
2,428.1	12.84	72.45	2,424.6	14.4	45.6	14.9	3.00	3.00	0.00
2,500.0	15.00	72.45	2,494.3	19.6	62.0	20.3	3.00	3.00	0.00
2,600.0	18.00	72.45	2,590.2	28.2	89.1	29.1	3.00	3.00	0.00
<b>EOB @ 19.72° Inc. / 72.45° Azm</b>									
2,657.5	19.73	72.45	2,644.6	33.8	106.8	34.9	3.00	3.00	0.00
2,700.0	19.73	72.45	2,684.6	38.1	120.5	39.3	0.00	0.00	0.00
2,800.0	19.73	72.45	2,778.7	48.3	152.7	49.8	0.00	0.00	0.00
2,900.0	19.73	72.45	2,872.9	58.5	184.9	60.3	0.00	0.00	0.00
3,000.0	19.73	72.45	2,967.0	68.7	217.1	70.8	0.00	0.00	0.00
3,100.0	19.73	72.45	3,061.1	78.8	249.2	81.3	0.00	0.00	0.00
3,200.0	19.73	72.45	3,155.3	89.0	281.4	91.9	0.00	0.00	0.00
3,300.0	19.73	72.45	3,249.4	99.2	313.6	102.4	0.00	0.00	0.00
3,400.0	19.73	72.45	3,343.5	109.4	345.8	112.9	0.00	0.00	0.00
<b>FXHLS</b>									
3,444.4	19.73	72.45	3,385.4	113.9	360.1	117.5	0.00	0.00	0.00
3,500.0	19.73	72.45	3,437.7	119.5	378.0	123.4	0.00	0.00	0.00
3,600.0	19.73	72.45	3,531.8	129.7	410.1	133.9	0.00	0.00	0.00
3,700.0	19.73	72.45	3,625.9	139.9	442.3	144.4	0.00	0.00	0.00
3,800.0	19.73	72.45	3,720.0	150.1	474.5	154.9	0.00	0.00	0.00
3,900.0	19.73	72.45	3,814.2	160.3	506.7	165.4	0.00	0.00	0.00
<b>PIRR</b>									
3,915.3	19.73	72.45	3,828.5	161.8	511.6	167.0	0.00	0.00	0.00
4,000.0	19.73	72.45	3,908.3	170.4	538.9	175.9	0.00	0.00	0.00
4,100.0	19.73	72.45	4,002.4	180.6	571.1	186.4	0.00	0.00	0.00
4,200.0	19.73	72.45	4,096.6	190.8	603.2	196.9	0.00	0.00	0.00
4,300.0	19.73	72.45	4,190.7	201.0	635.4	207.4	0.00	0.00	0.00
4,400.0	19.73	72.45	4,284.8	211.1	667.6	217.9	0.00	0.00	0.00

## Well Planning Report



**Database:** EDM 5000.1 Single User Db  
**Company:** SandRidge Energy  
**Project:** Jackson County, Colorado  
**Site:** Sec 7, T7N, R80W, 6th PM  
**Well:** Goldeneye 0780 1-6H31  
**Wellbore:** Wellbore #1  
**Design:** Design #1

**Local Co-ordinate Reference:**  
**TVD Reference:**  
**MD Reference:**  
**North Reference:**  
**Survey Calculation Method:**

Well Goldeneye 0780 1-6H31  
 RKB @ 8156.0usft (Cyclone #33)  
 RKB @ 8156.0usft (Cyclone #33)  
 Grid  
 Minimum Curvature

## Planned Survey

Measured Depth (usft)	Inclination (°)	Azimuth (°)	Vertical Depth (usft)	+N/-S (usft)	+E/-W (usft)	Vertical Section (usft)	Dogleg Rate (°/100usft)	Build Rate (°/100usft)	Turn Rate (°/100usft)
4,500.0	19.73	72.45	4,379.0	221.3	699.8	228.4	0.00	0.00	0.00
<b>SSSX</b>									
4,554.9	19.73	72.45	4,430.6	226.9	717.4	234.2	0.00	0.00	0.00
4,600.0	19.73	72.45	4,473.1	231.5	732.0	238.9	0.00	0.00	0.00
4,700.0	19.73	72.45	4,567.2	241.7	764.1	249.4	0.00	0.00	0.00
4,800.0	19.73	72.45	4,661.4	251.9	796.3	259.9	0.00	0.00	0.00
4,900.0	19.73	72.45	4,755.5	262.0	828.5	270.4	0.00	0.00	0.00
5,000.0	19.73	72.45	4,849.6	272.2	860.7	280.9	0.00	0.00	0.00
5,100.0	19.73	72.45	4,943.8	282.4	892.9	291.4	0.00	0.00	0.00
<b>SNNN</b>									
5,145.0	19.73	72.45	4,986.1	287.0	907.3	296.1	0.00	0.00	0.00
5,200.0	19.73	72.45	5,037.9	292.6	925.0	301.9	0.00	0.00	0.00
5,300.0	19.73	72.45	5,132.0	302.7	957.2	312.4	0.00	0.00	0.00
<b>PIRRL</b>									
5,375.0	19.73	72.45	5,202.7	310.4	981.4	320.3	0.00	0.00	0.00
5,400.0	19.73	72.45	5,226.2	312.9	989.4	322.9	0.00	0.00	0.00
5,500.0	19.73	72.45	5,320.3	323.1	1,021.6	333.4	0.00	0.00	0.00
5,600.0	19.73	72.45	5,414.4	333.3	1,053.8	343.9	0.00	0.00	0.00
5,700.0	19.73	72.45	5,508.6	343.5	1,085.9	354.4	0.00	0.00	0.00
5,800.0	19.73	72.45	5,602.7	353.6	1,118.1	364.9	0.00	0.00	0.00
5,900.0	19.73	72.45	5,696.8	363.8	1,150.3	375.4	0.00	0.00	0.00
6,000.0	19.73	72.45	5,790.9	374.0	1,182.5	385.9	0.00	0.00	0.00
6,100.0	19.73	72.45	5,885.1	384.2	1,214.7	396.4	0.00	0.00	0.00
6,200.0	19.73	72.45	5,979.2	394.3	1,246.8	406.9	0.00	0.00	0.00
6,300.0	19.73	72.45	6,073.3	404.5	1,279.0	417.4	0.00	0.00	0.00
<b>MNCS</b>									
6,382.3	19.73	72.45	6,150.8	412.9	1,305.5	426.1	0.00	0.00	0.00
6,400.0	19.73	72.45	6,167.5	414.7	1,311.2	427.9	0.00	0.00	0.00
6,500.0	19.73	72.45	6,261.6	424.9	1,343.4	438.4	0.00	0.00	0.00
<b>NBRR</b>									
6,532.8	19.73	72.45	6,292.4	428.2	1,353.9	441.9	0.00	0.00	0.00
6,600.0	19.73	72.45	6,355.7	435.0	1,375.6	449.0	0.00	0.00	0.00
6,700.0	19.73	72.45	6,449.9	445.2	1,407.7	459.5	0.00	0.00	0.00
6,800.0	19.73	72.45	6,544.0	455.4	1,439.9	470.0	0.00	0.00	0.00
6,900.0	19.73	72.45	6,638.1	465.6	1,472.1	480.5	0.00	0.00	0.00
<b>Build 15° / 100'</b>									
6,924.8	19.73	72.45	6,661.5	468.1	1,480.1	483.1	0.00	0.00	0.00
6,950.0	21.02	62.24	6,685.1	471.5	1,488.1	486.5	14.99	5.13	-40.52
6,975.0	22.83	53.43	6,708.3	476.5	1,496.0	491.6	15.00	7.25	-35.22
7,000.0	25.06	45.98	6,731.2	483.0	1,503.7	498.2	15.00	8.90	-29.80
7,025.0	27.59	39.75	6,753.6	491.2	1,511.2	506.5	15.00	10.15	-24.94
7,050.0	30.37	34.53	6,775.4	500.8	1,518.5	516.2	15.00	11.09	-20.88
7,075.0	33.31	30.13	6,796.7	512.0	1,525.5	527.4	15.00	11.79	-17.61
7,100.0	36.39	26.38	6,817.2	524.6	1,532.3	540.1	15.00	12.32	-15.00
7,125.0	39.57	23.15	6,836.9	538.5	1,538.7	554.1	15.00	12.72	-12.93
7,150.0	42.83	20.33	6,855.7	553.8	1,544.8	569.5	15.00	13.03	-11.28
7,175.0	46.15	17.83	6,873.5	570.4	1,550.5	586.1	15.00	13.28	-9.96
7,200.0	49.52	15.61	6,890.3	588.1	1,555.8	603.9	15.00	13.47	-8.90
7,225.0	52.92	13.60	6,906.0	607.0	1,560.7	622.8	15.00	13.63	-8.05
7,250.0	56.36	11.76	6,920.4	626.9	1,565.2	642.7	15.00	13.75	-7.35
7,275.0	59.82	10.06	6,933.7	647.7	1,569.2	663.6	15.00	13.85	-6.79
7,300.0	63.31	8.48	6,945.6	669.4	1,572.8	685.3	15.00	13.93	-6.32
7,325.0	66.81	6.99	6,956.1	691.9	1,575.8	707.8	15.00	14.00	-5.95

# Well Planning Report



<b>Database:</b>	EDM 5000.1 Single User Db	<b>Local Co-ordinate Reference:</b>	Well Goldeneye 0780 1-6H31
<b>Company:</b>	SandRidge Energy	<b>TVD Reference:</b>	RKB @ 8156.0usft (Cyclone #33)
<b>Project:</b>	Jackson County, Colorado	<b>MD Reference:</b>	RKB @ 8156.0usft (Cyclone #33)
<b>Site:</b>	Sec 7, T7N, R80W, 6th PM	<b>North Reference:</b>	Grid
<b>Well:</b>	Goldeneye 0780 1-6H31	<b>Survey Calculation Method:</b>	Minimum Curvature
<b>Wellbore:</b>	Wellbore #1		
<b>Design:</b>	Design #1		

Planned Survey									
Measured Depth (usft)	Inclination (°)	Azimuth (°)	Vertical Depth (usft)	+N/-S (usft)	+E/-W (usft)	Vertical Section (usft)	Dogleg Rate (°/100usft)	Build Rate (°/100usft)	Turn Rate (°/100usft)
7,350.0	70.32	5.58	6,965.2	715.0	1,578.3	730.9	15.00	14.05	-5.64
7,375.0	73.84	4.23	6,972.9	738.7	1,580.4	754.7	15.00	14.09	-5.40
7,400.0	77.37	2.93	6,979.1	762.9	1,581.9	778.8	15.00	14.13	-5.21
7,425.0	80.91	1.66	6,983.8	787.4	1,582.9	803.4	15.00	14.15	-5.07
<b>EOB @ 84.00° Inc. / 0.58° Azm</b>									
7,446.8	84.00	0.58	6,986.7	809.0	1,583.3	825.0	15.00	14.16	-4.97
7,500.0	84.00	0.58	6,992.3	861.9	1,583.8	877.9	0.00	0.00	0.00
7,600.0	84.00	0.58	7,002.7	961.4	1,584.8	977.3	0.00	0.00	0.00
7,700.0	84.00	0.58	7,013.2	1,060.8	1,585.8	1,076.8	0.00	0.00	0.00
7,800.0	84.00	0.58	7,023.6	1,160.2	1,586.8	1,176.2	0.00	0.00	0.00
7,900.0	84.00	0.58	7,034.1	1,259.7	1,587.9	1,275.7	0.00	0.00	0.00
8,000.0	84.00	0.58	7,044.5	1,359.1	1,588.9	1,375.2	0.00	0.00	0.00
8,100.0	84.00	0.58	7,055.0	1,458.6	1,589.9	1,474.6	0.00	0.00	0.00
8,200.0	84.00	0.58	7,065.4	1,558.0	1,590.9	1,574.1	0.00	0.00	0.00
8,300.0	84.00	0.58	7,075.9	1,657.5	1,591.9	1,673.5	0.00	0.00	0.00
8,400.0	84.00	0.58	7,086.3	1,756.9	1,592.9	1,773.0	0.00	0.00	0.00
8,500.0	84.00	0.58	7,096.8	1,856.4	1,593.9	1,872.4	0.00	0.00	0.00
8,600.0	84.00	0.58	7,107.3	1,955.8	1,594.9	1,971.9	0.00	0.00	0.00
8,700.0	84.00	0.58	7,117.7	2,055.3	1,595.9	2,071.3	0.00	0.00	0.00
8,800.0	84.00	0.58	7,128.2	2,154.7	1,596.9	2,170.8	0.00	0.00	0.00
8,900.0	84.00	0.58	7,138.6	2,254.2	1,597.9	2,270.2	0.00	0.00	0.00
9,000.0	84.00	0.58	7,149.1	2,353.6	1,598.9	2,369.7	0.00	0.00	0.00
9,100.0	84.00	0.58	7,159.5	2,453.1	1,599.9	2,469.1	0.00	0.00	0.00
9,200.0	84.00	0.58	7,170.0	2,552.5	1,600.9	2,568.6	0.00	0.00	0.00
9,300.0	84.00	0.58	7,180.4	2,652.0	1,601.9	2,668.0	0.00	0.00	0.00
9,400.0	84.00	0.58	7,190.9	2,751.4	1,603.0	2,767.5	0.00	0.00	0.00
9,500.0	84.00	0.58	7,201.3	2,850.8	1,604.0	2,866.9	0.00	0.00	0.00
9,600.0	84.00	0.58	7,211.8	2,950.3	1,605.0	2,966.4	0.00	0.00	0.00
9,700.0	84.00	0.58	7,222.2	3,049.7	1,606.0	3,065.8	0.00	0.00	0.00
9,800.0	84.00	0.58	7,232.7	3,149.2	1,607.0	3,165.3	0.00	0.00	0.00
9,900.0	84.00	0.58	7,243.1	3,248.6	1,608.0	3,264.7	0.00	0.00	0.00
10,000.0	84.00	0.58	7,253.6	3,348.1	1,609.0	3,364.2	0.00	0.00	0.00
10,100.0	84.00	0.58	7,264.0	3,447.5	1,610.0	3,463.6	0.00	0.00	0.00
10,200.0	84.00	0.58	7,274.5	3,547.0	1,611.0	3,563.1	0.00	0.00	0.00
10,300.0	84.00	0.58	7,285.0	3,646.4	1,612.0	3,662.6	0.00	0.00	0.00
10,400.0	84.00	0.58	7,295.4	3,745.9	1,613.0	3,762.0	0.00	0.00	0.00
10,500.0	84.00	0.58	7,305.9	3,845.3	1,614.0	3,861.5	0.00	0.00	0.00
10,600.0	84.00	0.58	7,316.3	3,944.8	1,615.0	3,960.9	0.00	0.00	0.00
10,700.0	84.00	0.58	7,326.8	4,044.2	1,616.0	4,060.4	0.00	0.00	0.00
10,800.0	84.00	0.58	7,337.2	4,143.7	1,617.0	4,159.8	0.00	0.00	0.00
10,900.0	84.00	0.58	7,347.7	4,243.1	1,618.1	4,259.3	0.00	0.00	0.00
11,000.0	84.00	0.58	7,358.1	4,342.6	1,619.1	4,358.7	0.00	0.00	0.00
11,100.0	84.00	0.58	7,368.6	4,442.0	1,620.1	4,458.2	0.00	0.00	0.00
11,200.0	84.00	0.58	7,379.0	4,541.4	1,621.1	4,557.6	0.00	0.00	0.00
11,300.0	84.00	0.58	7,389.5	4,640.9	1,622.1	4,657.1	0.00	0.00	0.00
11,400.0	84.00	0.58	7,399.9	4,740.3	1,623.1	4,756.5	0.00	0.00	0.00
11,500.0	84.00	0.58	7,410.4	4,839.8	1,624.1	4,856.0	0.00	0.00	0.00
11,600.0	84.00	0.58	7,420.8	4,939.2	1,625.1	4,955.4	0.00	0.00	0.00
11,700.0	84.00	0.58	7,431.3	5,038.7	1,626.1	5,054.9	0.00	0.00	0.00
11,800.0	84.00	0.58	7,441.7	5,138.1	1,627.1	5,154.3	0.00	0.00	0.00
11,900.0	84.00	0.58	7,452.2	5,237.6	1,628.1	5,253.8	0.00	0.00	0.00
12,000.0	84.00	0.58	7,462.6	5,337.0	1,629.1	5,353.2	0.00	0.00	0.00
12,100.0	84.00	0.58	7,473.1	5,436.5	1,630.1	5,452.7	0.00	0.00	0.00
12,200.0	84.00	0.58	7,483.6	5,535.9	1,631.1	5,552.1	0.00	0.00	0.00

# Well Planning Report



<b>Database:</b>	EDM 5000.1 Single User Db	<b>Local Co-ordinate Reference:</b>	Well Goldeneye 0780 1-6H31
<b>Company:</b>	SandRidge Energy	<b>TVD Reference:</b>	RKB @ 8156.0usft (Cyclone #33)
<b>Project:</b>	Jackson County, Colorado	<b>MD Reference:</b>	RKB @ 8156.0usft (Cyclone #33)
<b>Site:</b>	Sec 7, T7N, R80W, 6th PM	<b>North Reference:</b>	Grid
<b>Well:</b>	Goldeneye 0780 1-6H31	<b>Survey Calculation Method:</b>	Minimum Curvature
<b>Wellbore:</b>	Wellbore #1		
<b>Design:</b>	Design #1		

Planned Survey										
Measured Depth (usft)	Inclination (°)	Azimuth (°)	Vertical Depth (usft)	+N/-S (usft)	+E/-W (usft)	Vertical Section (usft)	Dogleg Rate (°/100usft)	Build Rate (°/100usft)	Turn Rate (°/100usft)	
12,300.0	84.00	0.58	7,494.0	5,635.4	1,632.1	5,651.6	0.00	0.00	0.00	
12,400.0	84.00	0.58	7,504.5	5,734.8	1,633.2	5,751.0	0.00	0.00	0.00	
12,500.0	84.00	0.58	7,514.9	5,834.3	1,634.2	5,850.5	0.00	0.00	0.00	
12,600.0	84.00	0.58	7,525.4	5,933.7	1,635.2	5,950.0	0.00	0.00	0.00	
12,700.0	84.00	0.58	7,535.8	6,033.2	1,636.2	6,049.4	0.00	0.00	0.00	
12,800.0	84.00	0.58	7,546.3	6,132.6	1,637.2	6,148.9	0.00	0.00	0.00	
12,900.0	84.00	0.58	7,556.7	6,232.0	1,638.2	6,248.3	0.00	0.00	0.00	
13,000.0	84.00	0.58	7,567.2	6,331.5	1,639.2	6,347.8	0.00	0.00	0.00	
13,100.0	84.00	0.58	7,577.6	6,430.9	1,640.2	6,447.2	0.00	0.00	0.00	
13,200.0	84.00	0.58	7,588.1	6,530.4	1,641.2	6,546.7	0.00	0.00	0.00	
13,300.0	84.00	0.58	7,598.5	6,629.8	1,642.2	6,646.1	0.00	0.00	0.00	
13,400.0	84.00	0.58	7,609.0	6,729.3	1,643.2	6,745.6	0.00	0.00	0.00	
13,500.0	84.00	0.58	7,619.4	6,828.7	1,644.2	6,845.0	0.00	0.00	0.00	
13,600.0	84.00	0.58	7,629.9	6,928.2	1,645.2	6,944.5	0.00	0.00	0.00	
13,700.0	84.00	0.58	7,640.3	7,027.6	1,646.2	7,043.9	0.00	0.00	0.00	
13,800.0	84.00	0.58	7,650.8	7,127.1	1,647.2	7,143.4	0.00	0.00	0.00	
13,900.0	84.00	0.58	7,661.3	7,226.5	1,648.3	7,242.8	0.00	0.00	0.00	
14,000.0	84.00	0.58	7,671.7	7,326.0	1,649.3	7,342.3	0.00	0.00	0.00	
14,100.0	84.00	0.58	7,682.2	7,425.4	1,650.3	7,441.7	0.00	0.00	0.00	
14,200.0	84.00	0.58	7,692.6	7,524.9	1,651.3	7,541.2	0.00	0.00	0.00	
14,300.0	84.00	0.58	7,703.1	7,624.3	1,652.3	7,640.6	0.00	0.00	0.00	
14,400.0	84.00	0.58	7,713.5	7,723.8	1,653.3	7,740.1	0.00	0.00	0.00	
14,500.0	84.00	0.58	7,724.0	7,823.2	1,654.3	7,839.5	0.00	0.00	0.00	
14,600.0	84.00	0.58	7,734.4	7,922.6	1,655.3	7,939.0	0.00	0.00	0.00	
14,700.0	84.00	0.58	7,744.9	8,022.1	1,656.3	8,038.4	0.00	0.00	0.00	
14,800.0	84.00	0.58	7,755.3	8,121.5	1,657.3	8,137.9	0.00	0.00	0.00	
14,900.0	84.00	0.58	7,765.8	8,221.0	1,658.3	8,237.4	0.00	0.00	0.00	
15,000.0	84.00	0.58	7,776.2	8,320.4	1,659.3	8,336.8	0.00	0.00	0.00	
15,100.0	84.00	0.58	7,786.7	8,419.9	1,660.3	8,436.3	0.00	0.00	0.00	
15,200.0	84.00	0.58	7,797.1	8,519.3	1,661.3	8,535.7	0.00	0.00	0.00	
15,300.0	84.00	0.58	7,807.6	8,618.8	1,662.4	8,635.2	0.00	0.00	0.00	
15,400.0	84.00	0.58	7,818.0	8,718.2	1,663.4	8,734.6	0.00	0.00	0.00	
15,500.0	84.00	0.58	7,828.5	8,817.7	1,664.4	8,834.1	0.00	0.00	0.00	
15,600.0	84.00	0.58	7,839.0	8,917.1	1,665.4	8,933.5	0.00	0.00	0.00	
15,700.0	84.00	0.58	7,849.4	9,016.6	1,666.4	9,033.0	0.00	0.00	0.00	
15,800.0	84.00	0.58	7,859.9	9,116.0	1,667.4	9,132.4	0.00	0.00	0.00	
15,900.0	84.00	0.58	7,870.3	9,215.5	1,668.4	9,231.9	0.00	0.00	0.00	
16,000.0	84.00	0.58	7,880.8	9,314.9	1,669.4	9,331.3	0.00	0.00	0.00	
16,100.0	84.00	0.58	7,891.2	9,414.4	1,670.4	9,430.8	0.00	0.00	0.00	
16,200.0	84.00	0.58	7,901.7	9,513.8	1,671.4	9,530.2	0.00	0.00	0.00	
16,300.0	84.00	0.58	7,912.1	9,613.2	1,672.4	9,629.7	0.00	0.00	0.00	
16,400.0	84.00	0.58	7,922.6	9,712.7	1,673.4	9,729.1	0.00	0.00	0.00	
16,500.0	84.00	0.58	7,933.0	9,812.1	1,674.4	9,828.6	0.00	0.00	0.00	
16,600.0	84.00	0.58	7,943.5	9,911.6	1,675.4	9,928.0	0.00	0.00	0.00	
16,700.0	84.00	0.58	7,953.9	10,011.0	1,676.4	10,027.5	0.00	0.00	0.00	
16,800.0	84.00	0.58	7,964.4	10,110.5	1,677.5	10,126.9	0.00	0.00	0.00	
16,900.0	84.00	0.58	7,974.8	10,209.9	1,678.5	10,226.4	0.00	0.00	0.00	
17,000.0	84.00	0.58	7,985.3	10,309.4	1,679.5	10,325.8	0.00	0.00	0.00	
17,100.0	84.00	0.58	7,995.7	10,408.8	1,680.5	10,425.3	0.00	0.00	0.00	
17,200.0	84.00	0.58	8,006.2	10,508.3	1,681.5	10,524.8	0.00	0.00	0.00	
17,300.0	84.00	0.58	8,016.7	10,607.7	1,682.5	10,624.2	0.00	0.00	0.00	
17,400.0	84.00	0.58	8,027.1	10,707.2	1,683.5	10,723.7	0.00	0.00	0.00	
17,500.0	84.00	0.58	8,037.6	10,806.6	1,684.5	10,823.1	0.00	0.00	0.00	
17,600.0	84.00	0.58	8,048.0	10,906.1	1,685.5	10,922.6	0.00	0.00	0.00	

# Well Planning Report



<b>Database:</b>	EDM 5000.1 Single User Db	<b>Local Co-ordinate Reference:</b>	Well Goldeneye 0780 1-6H31
<b>Company:</b>	SandRidge Energy	<b>TVD Reference:</b>	RKB @ 8156.0usft (Cyclone #33)
<b>Project:</b>	Jackson County, Colorado	<b>MD Reference:</b>	RKB @ 8156.0usft (Cyclone #33)
<b>Site:</b>	Sec 7, T7N, R80W, 6th PM	<b>North Reference:</b>	Grid
<b>Well:</b>	Goldeneye 0780 1-6H31	<b>Survey Calculation Method:</b>	Minimum Curvature
<b>Wellbore:</b>	Wellbore #1		
<b>Design:</b>	Design #1		

Planned Survey									
Measured Depth (usft)	Inclination (°)	Azimuth (°)	Vertical Depth (usft)	+N/-S (usft)	+E/-W (usft)	Vertical Section (usft)	Dogleg Rate (°/100usft)	Build Rate (°/100usft)	Turn Rate (°/100usft)
17,700.0	84.00	0.58	8,058.5	11,005.5	1,686.5	11,022.0	0.00	0.00	0.00
17,800.0	84.00	0.58	8,068.9	11,105.0	1,687.5	11,121.5	0.00	0.00	0.00
17,900.0	84.00	0.58	8,079.4	11,204.4	1,688.5	11,220.9	0.00	0.00	0.00
<b>TD @ 17996.8' MD / 8089.5' TVD</b>									
17,996.8	84.00	0.58	8,089.5	11,300.7	1,689.5	11,317.2	0.00	0.00	0.00

Design Targets									
Target Name	Dip Angle (°)	Dip Dir. (°)	TVD (usft)	+N/-S (usft)	+E/-W (usft)	Northing (usft)	Easting (usft)	Latitude	Longitude
KOP (plat) - Goldeneye	0.00	0.00	0.0	467.9	1,459.4	1,462,578.18	2,747,185.12	40° 35' 58.605 N	106° 24' 37.571 W
- hit/miss target									
- plan misses target center by 1532.6usft at 0.0usft MD (0.0 TVD, 0.0 N, 0.0 E)									
- Point									
LP (plat) - Goldeneye	0.00	0.00	0.0	917.3	1,479.0	1,463,027.57	2,747,204.64	40° 36' 3.047 N	106° 24' 37.378 W
- hit/miss target									
- plan misses target center by 1740.3usft at 0.0usft MD (0.0 TVD, 0.0 N, 0.0 E)									
- Point									
PBHL - Goldeneye 07	0.00	0.00	8,089.5	11,300.7	1,689.5	1,473,410.94	2,747,415.17	40° 37' 45.667 N	106° 24' 36.030 W
- hit/miss target									
- plan hits target center									
- Point									

Formations					
Measured Depth (usft)	Vertical Depth (usft)	Name	Lithology	Dip (°)	Dip Direction (°)
2,428.1	2,424.6	LNCE		6.00	0.58
3,444.4	3,385.4	FXHLS		6.00	0.58
3,915.3	3,828.5	PIRR		6.00	0.58
4,554.9	4,430.6	SSSX		6.00	0.58
5,145.0	4,986.1	SNNN		6.00	0.58
5,375.0	5,202.7	PIRRL		6.00	0.58
6,382.3	6,150.8	MNCS		6.00	0.58
6,532.8	6,292.4	NBRR		6.00	0.58

Plan Annotations				
Measured Depth (usft)	Vertical Depth (usft)	+N/-S (usft)	+E/-W (usft)	Comment
2,000.0	2,000.0	0.0	0.0	Build 3° / 100'
2,657.5	2,644.6	33.8	106.8	EOB @ 19.72° Inc. / 72.45° Azm
6,924.8	6,661.5	468.1	1,480.1	Build 15° / 100'
7,446.8	6,986.7	809.0	1,583.3	EOB @ 84.00° Inc. / 0.58° Azm
17,996.8	8,089.5	11,300.7	1,689.5	TD @ 17996.8' MD / 8089.5' TVD