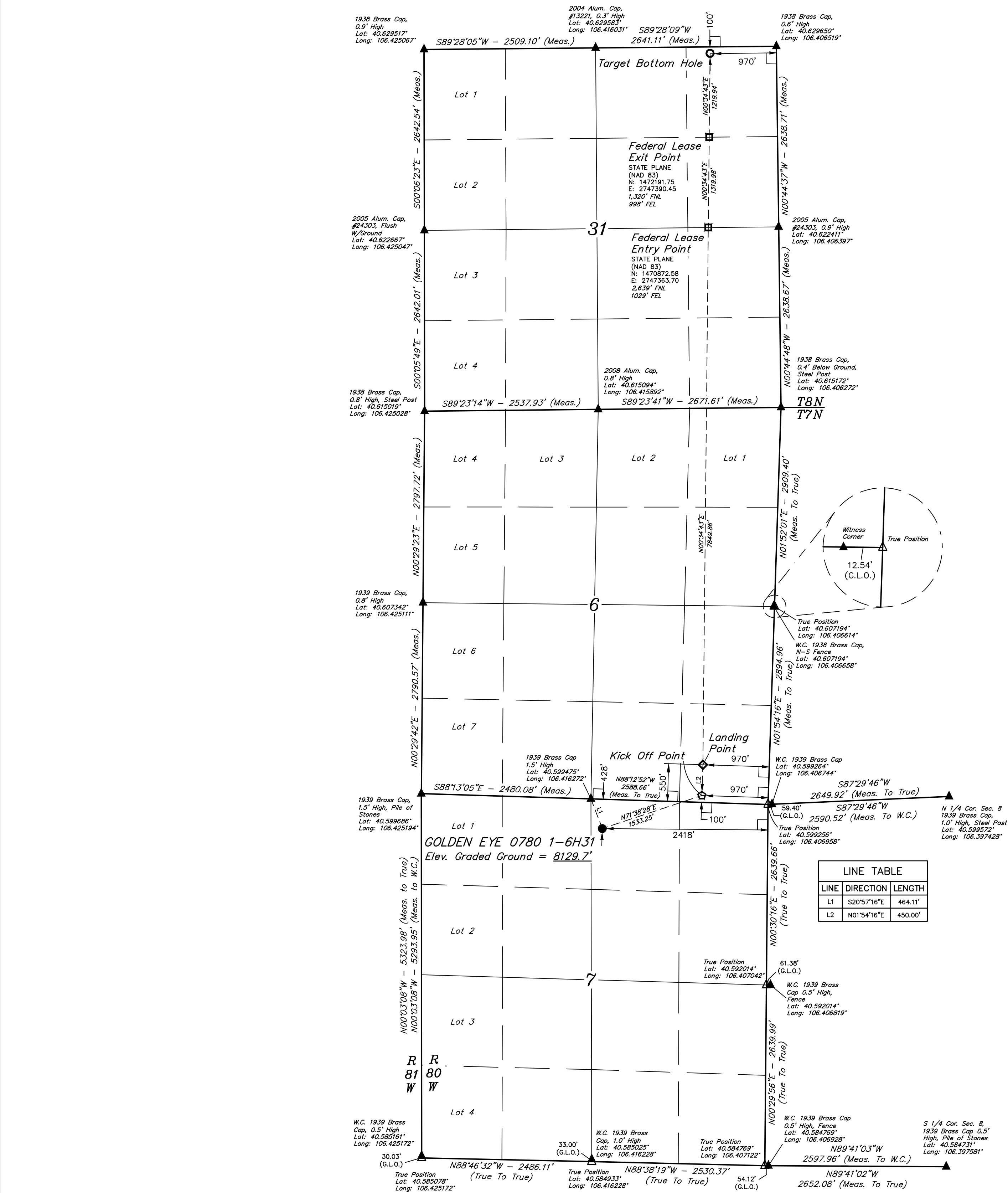


LEGEND:

- 90° SYMBOL
- PROPOSED WELLHEAD.
- KICK OFF POINT.
- LANDING POINT.
- FEDERAL LEASE ENTRY/EXIT POINT.
- TARGET BOTTOM HOLE.
- SECTION CORNERS LOCATED. (NAD 83)
- SECTION CORNERS RE-ESTABLISHED. (Not Set on Ground.) (NAD 83)

T7N, R80W, 6th P.M.



NAD 83 (SURFACE LOCATION)	NAD 83 (KICK OFF POINT)	NAD 83 (LANDING POINT)	NAD 83 (FEDERAL LEASE ENTRY POINT)	NAD 83 (FEDERAL LEASE EXIT POINT)	NAD 83 (TARGET BOTTOM HOLE)
LATITUDE = 40°35'53.83" (40.598286)	LATITUDE = 40°35'58.60" (40.599612)	LATITUDE = 40°36'03.05" (40.600846)	LATITUDE = 40°37'20.58" (40.622383)	LATITUDE = 40°37'33.62" (40.626005)	LATITUDE = 40°37'45.67" (40.629352)
LONGITUDE = 106°24'56.43" (106.415675)	LONGITUDE = 106°24'37.57" (106.410436)	LONGITUDE = 106°24'37.38" (106.410383)	LONGITUDE = 106°24'36.36" (106.410100)	LONGITUDE = 106°24'36.19" (106.410052)	LONGITUDE = 106°24'36.03" (106.410008)
NAD 27 (SURFACE LOCATION)	NAD 27 (KICK OFF POINT)	NAD 27 (LANDING POINT)	NAD 27 (FEDERAL LEASE ENTRY POINT)	NAD 27 (FEDERAL LEASE EXIT POINT)	NAD 27 (TARGET BOTTOM HOLE)
LATITUDE = 40°35'53.91" (40.598308)	LATITUDE = 40°35'58.68" (40.599634)	LATITUDE = 40°36'03.12" (40.600868)	LATITUDE = 40°37'20.66" (40.622405)	LATITUDE = 40°37'33.70" (40.626027)	LATITUDE = 40°37'45.75" (40.629374)
LONGITUDE = 106°24'54.32" (106.415089)	LONGITUDE = 106°24'35.46" (106.409850)	LONGITUDE = 106°24'35.27" (106.409796)	LONGITUDE = 106°24'34.25" (106.409513)	LONGITUDE = 106°24'34.08" (106.409466)	LONGITUDE = 106°24'33.92" (106.409422)
STATE PLANE NAD 83 (CO. NORTH)	STATE PLANE NAD 83 (CO. NORTH)	STATE PLANE NAD 83 (CO. NORTH)	STATE PLANE NAD 83 (CO. NORTH)	STATE PLANE NAD 83 (CO. NORTH)	STATE PLANE NAD 83 (CO. NORTH)
N: 1462110.28 E: 2745725.67	N: 1462578.18 E: 2747185.12	N: 1463027.57 E: 2747204.64	N: 1470872.58 E: 2747363.70	N: 1472191.75 E: 2747390.45	N: 1473410.94 E: 2747415.17
STATE PLANE NAD 27 (CO. NORTH)	STATE PLANE NAD 27 (CO. NORTH)	STATE PLANE NAD 27 (CO. NORTH)	STATE PLANE NAD 27 (CO. NORTH)	STATE PLANE NAD 27 (CO. NORTH)	STATE PLANE NAD 27 (CO. NORTH)
N: 462108.17 E: 1745881.90	N: 462576.09 E: 1747341.34	N: 463025.48 E: 1747360.85	N: 470870.52 E: 1747519.84	N: 472189.70 E: 1747546.57	N: 473408.89 E: 1747571.28

BASIS OF BEARINGS
BASIS OF BEARINGS IS A G.P.S. OBSERVATION

BASIS OF ELEVATION
SPOT ELEVATION AT THE SOUTHEAST CORNER OF SECTION 29, T7N, R80W, 6th P.M. TAKEN FROM THE COALMONT QUADRANGLE, COLORADO, JACKSON COUNTY, 7.5 MINUTE QUAD. (TOPOGRAPHIC MAP) PUBLISHED BY THE UNITED STATES DEPARTMENT OF THE INTERIOR, GEOLOGICAL SURVEY. SAID ELEVATION IS MARKED AS BEING 8156 FEET.

UELS, LLC
Corporate Office * 85 South 200 East
Vernal, UT 84078 * (435) 789-1017

CERTIFICATE OF RECORDING

THIS IS TO CERTIFY THAT THE ABOVE DESCRIBED SURVEY WAS MADE IN ACCORDANCE WITH THE NOTES OF ACTUAL SURVEYS MADE BY ME OR UNDER MY SUPERVISION AND THAT THE SAME ARE TRUE AND CORRECT TO THE BEST OF MY KNOWLEDGE AND BELIEF.

SandRidge Exploration & Production, LLC

GOLDEN EYE 0780 1-6H31
NW 1/4 NE 1/4, SECTION 7, T7N, R80W, 6th P.M.
JACKSON COUNTY, COLORADO

WELL LOCATION PLAT

REV: 7 08-02-18 T.L.L. (LP, BHL & NAME CHANGE & ADD KOP)

SURVEYED BY: JAMES FRESHWATER, N.W. **07-27-18** **SCALE:**
DRAWN BY: M.D. **04-27-16** **1" = 1000'**