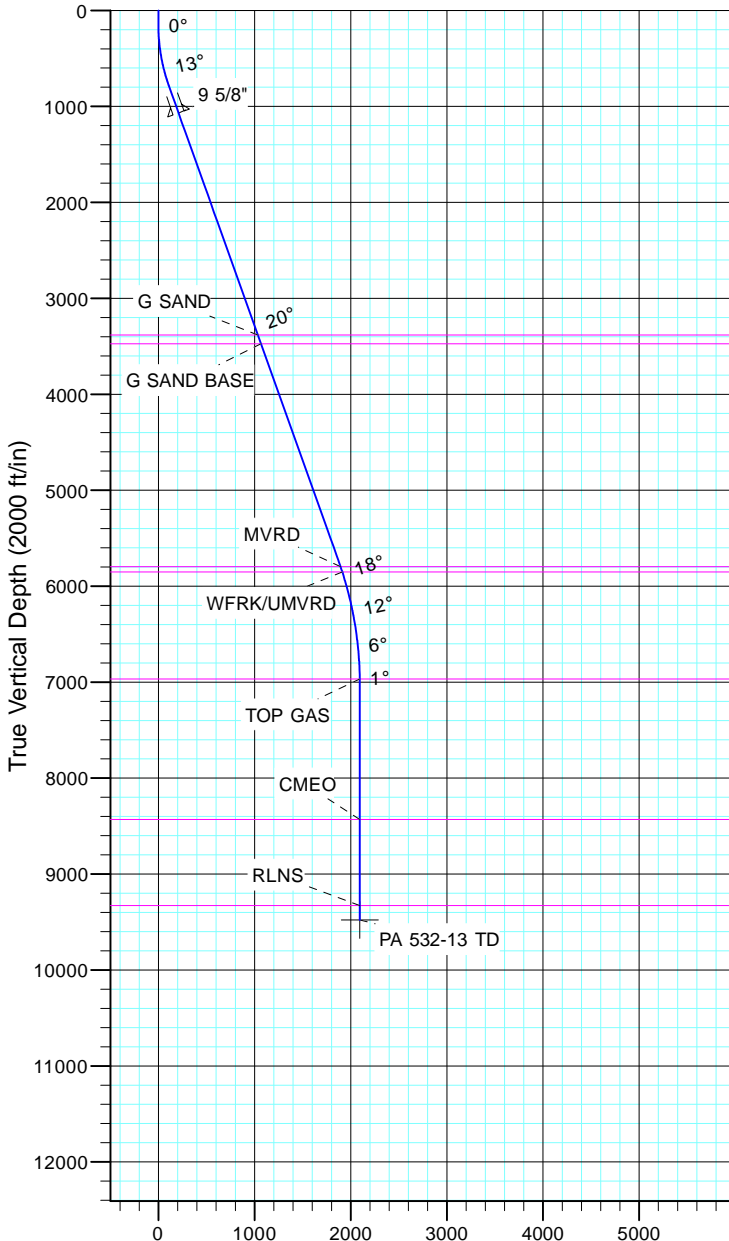


TEP Rocky Mountain LLC
Project: Garfield County, CO NAD83
Site: PA 44-13
Well: PA 532-13
Wellbore: OH
Design: Plan #1



Azimuths to True North
Magnetic North: 11.43°

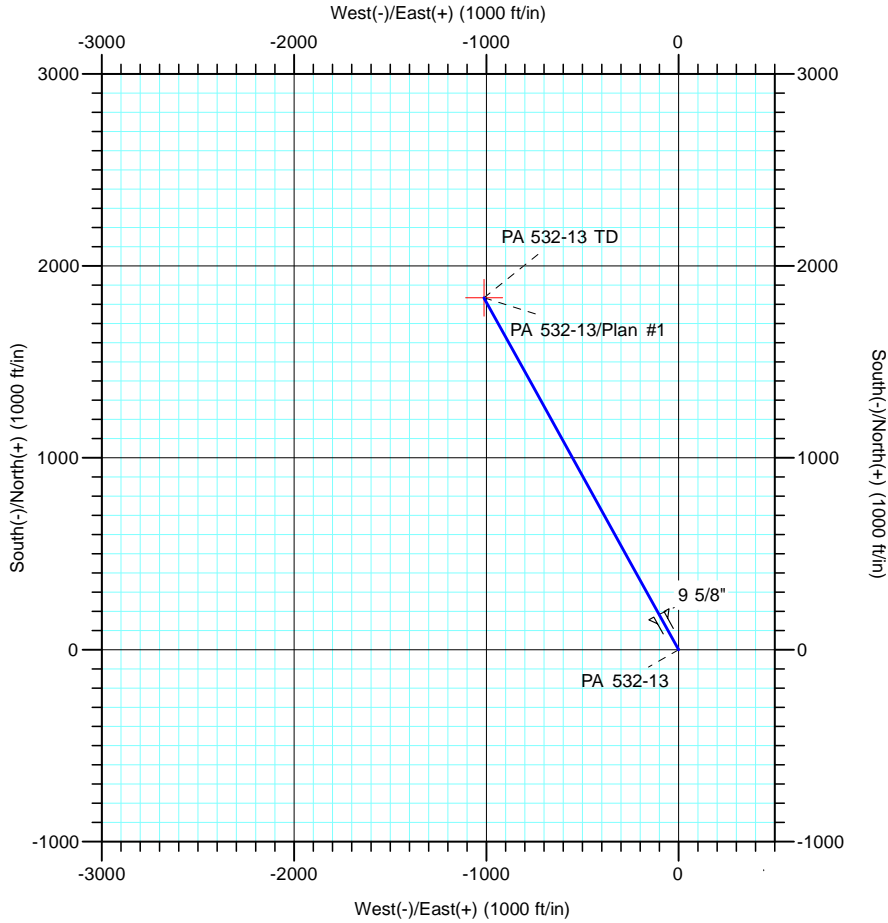
Magnetic Field
Strength: 53064.4nT
Dip Angle: 66.02°
Date: 12/31/2004
Model: IGRF2000



Vertical Section at 331.13° (2000 ft/in)

| CASING DETAILS | | | |
|----------------|--------|--------|-------|
| TVD | MD | Name | Size |
| 1070.1 | 1100.0 | 9 5/8" | 9.625 |

| FORMATION TOP DETAILS | | |
|-----------------------|--------|-------------|
| TVDPath | MDPath | Formation |
| 3382.0 | 3554.4 | G SAND |
| 3475.0 | 3653.1 | G SAND BASE |
| 5797.0 | 6118.1 | MVRD |
| 5853.0 | 6177.0 | WFRK/UMVRD |
| 6968.0 | 7310.9 | TOP GAS |
| 8432.0 | 8774.9 | CMEO |
| 9328.0 | 9670.9 | RLNS |



| DESIGN TARGET DETAILS | | | | | | | |
|-----------------------|--------|--------|---------|------------|------------|------------------|-------------------|
| Name | TVD | +N/-S | +E/-W | Northing | Easting | Latitude | Longitude |
| PA 532-13 TD | 9478.0 | 1834.8 | -1011.8 | 1625660.50 | 2310275.30 | 39° 31' 32.606 N | 107° 56' 43.581 W |

| SECTION DETAILS | | | | | | | | | | |
|-----------------|--------|-------|--------|--------|--------|---------|------|--------|--------|--------------|
| Sec | MD | Inc | Azi | TVD | +N/-S | +E/-W | Dleg | TFace | V Sect | Target |
| 1 | 0.0 | 0.00 | 0.00 | 0.0 | 0.0 | 0.0 | 0.00 | 0.00 | 0.0 | |
| 2 | 150.0 | 0.00 | 0.00 | 150.0 | 0.0 | 0.0 | 0.00 | 0.00 | 0.0 | |
| 3 | 804.0 | 19.62 | 331.13 | 791.3 | 97.1 | -53.6 | 3.00 | 331.13 | 110.9 | |
| 4 | 6052.8 | 19.62 | 331.13 | 5735.3 | 1640.5 | -904.7 | 0.00 | 0.00 | 1873.4 | |
| 5 | 7360.9 | 0.00 | 0.00 | 7018.0 | 1834.8 | -1011.8 | 1.50 | 180.00 | 2095.3 | |
| 6 | 9820.9 | 0.00 | 0.00 | 9478.0 | 1834.8 | -1011.8 | 0.00 | 0.00 | 2095.3 | PA 532-13 TD |