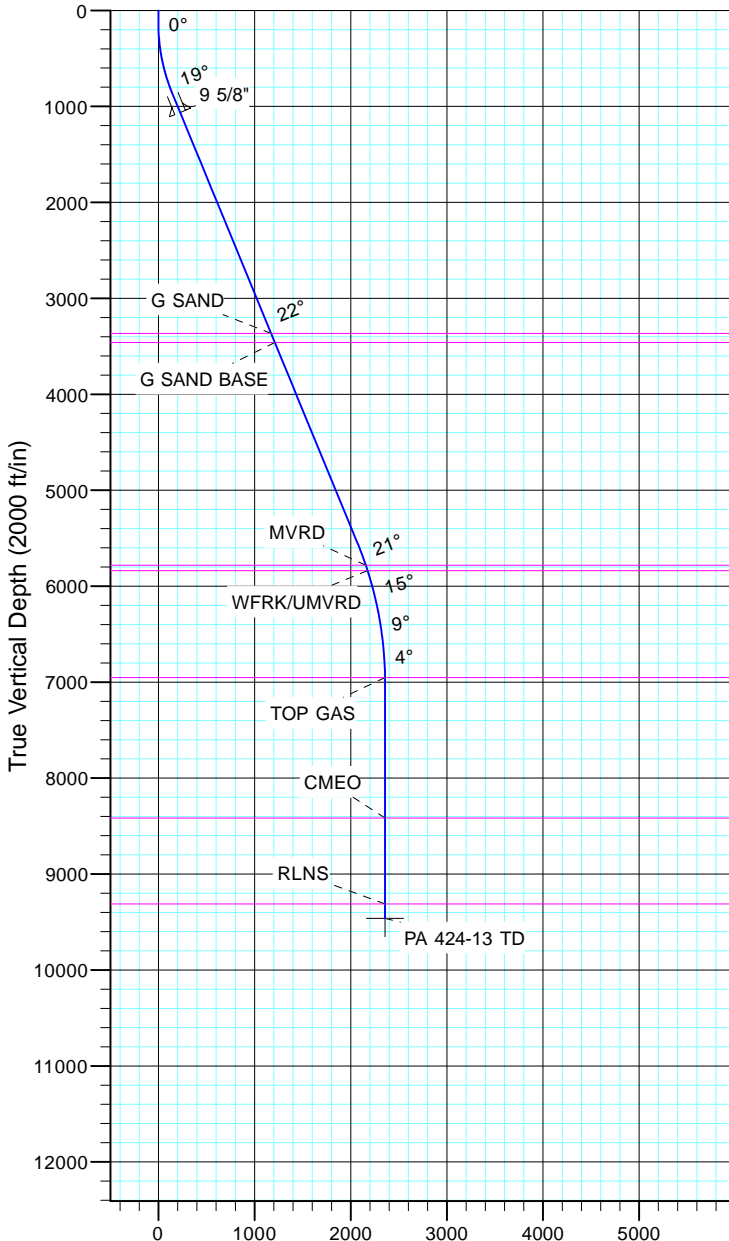


TEP Rocky Mountain LLC
Project: Garfield County, CO NAD83
Site: PA 44-13
Well: PA 424-13
Wellbore: OH
Design: Plan #1



Azimuths to True North
Magnetic North: 11.43°

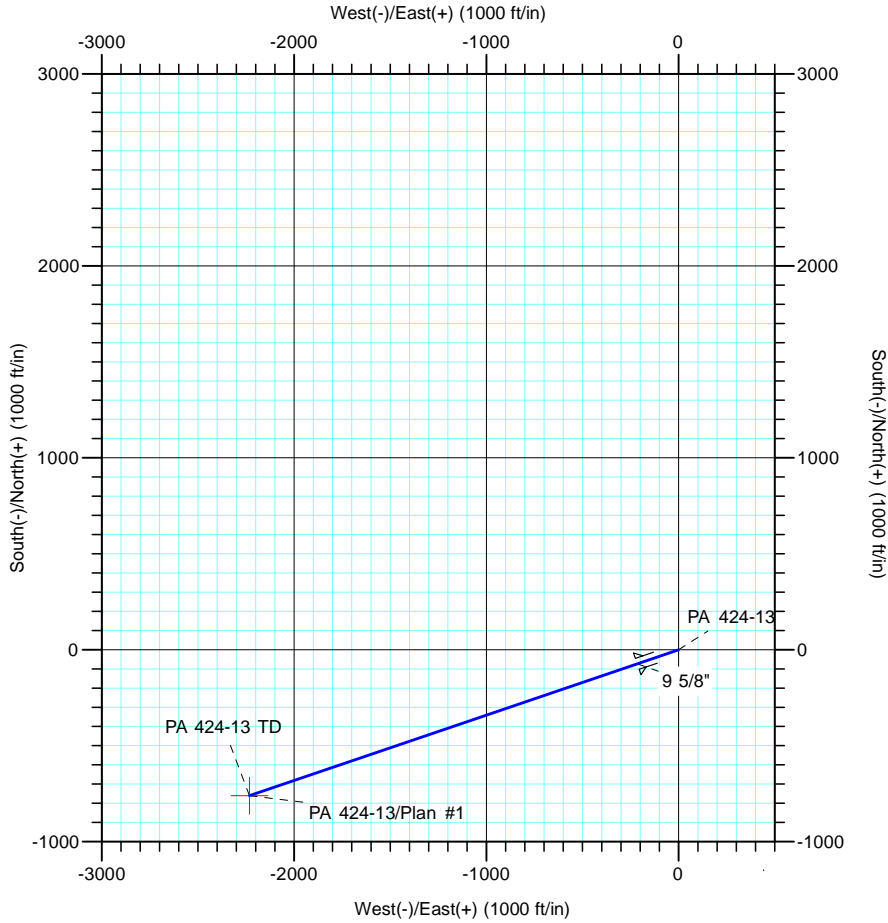
Magnetic Field
Strength: 53064.3nT
Dip Angle: 66.02°
Date: 12/31/2004
Model: IGRF2000



Vertical Section at 251.19° (2000 ft/in)

CASING DETAILS			
TVD	MD	Name	Size
1064.7	1100.0	9 5/8"	9.625

FORMATION TOP DETAILS		
TVDPath	MDPath	Formation
3367.0	3589.1	G SAND
3460.0	3689.7	G SAND BASE
5782.0	6197.1	MVRD
5838.0	6256.0	WFRK/UMVRD
6953.0	7389.9	TOP GAS
8417.0	8853.9	CMEO
9313.0	9749.9	RLNS



DESIGN TARGET DETAILS						
Name	TVD	+N/-S	+E/-W	Northing	Easting	Latitude
PA 424-13 TD	9463.0	-760.4	-2231.8	1623060.30	2308986.10	39° 31' 6.573 N

						Longitude
						107° 56' 59.133 W

SECTION DETAILS										
Sec	MD	Inc	Azi	TVD	+N/-S	+E/-W	Dleg	TFace	V Sect	Target
1	0.0	0.00	0.00	0.0	0.0	0.0	0.00	0.00	0.0	
2	135.0	0.00	0.00	135.0	0.0	0.0	0.00	0.00	0.0	
3	879.8	22.34	251.19	861.0	-46.2	-135.7	3.00	251.19	143.4	
4	5950.3	22.34	251.19	5550.9	-667.9	-1960.3	0.00	0.00	2071.0	
5	7439.9	0.00	0.00	7003.0	-760.4	-2231.8	1.50	180.00	2357.7	
6	9899.9	0.00	0.00	9463.0	-760.4	-2231.8	0.00	0.00	2357.7	PA 424-13 TD