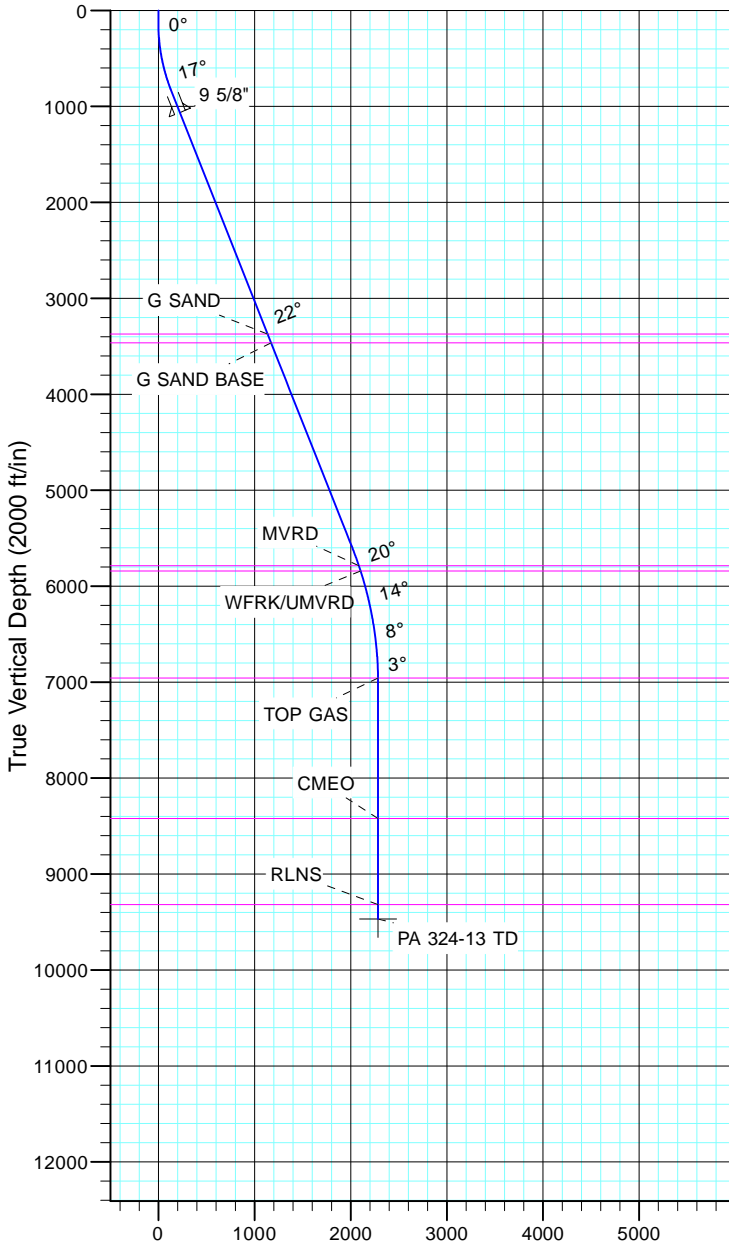


TEP Rocky Mountain LLC  
Project: Garfield County, CO NAD83  
Site: PA 44-13  
Well: PA 324-13  
Wellbore: OH  
Design: Plan #1



Azimuths to True North  
Magnetic North: 11.43°  
  
Magnetic Field  
Strength: 53064.3nT  
Dip Angle: 66.02°  
Date: 12/31/2004  
Model: IGRF2000



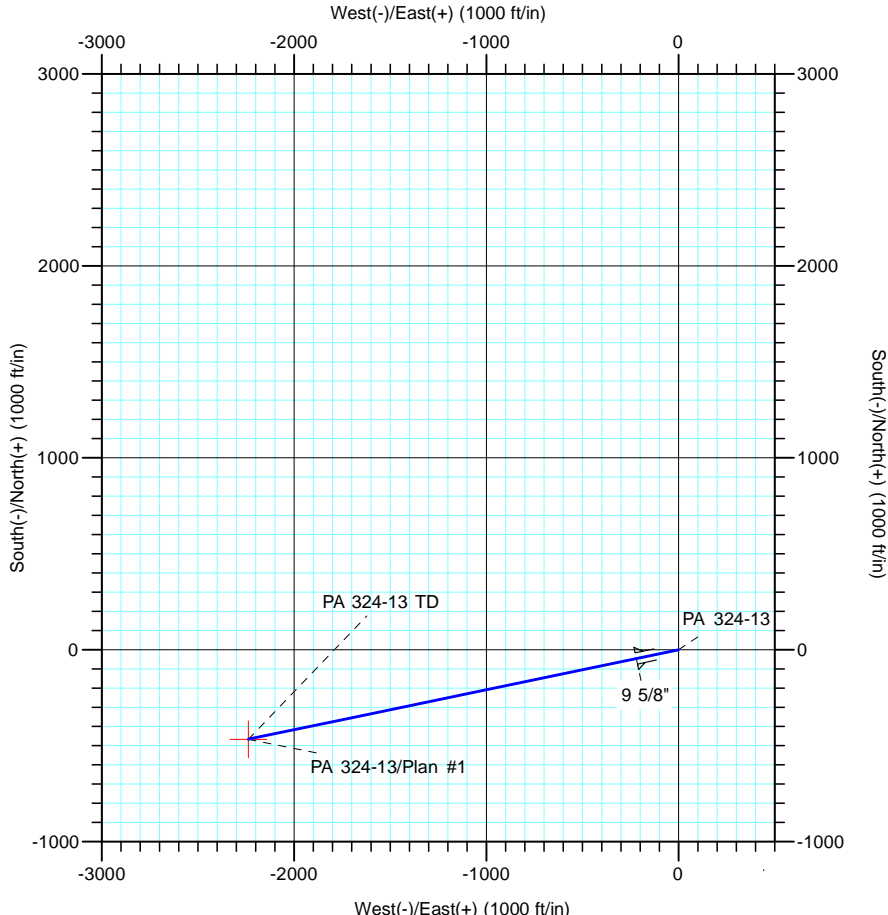
Vertical Section at 258.23° (2000 ft/in)

CASING DETAILS

TVD	MD	Name	Size
1065.9	1100.0	9 5/8"	9.625

FORMATION TOP DETAILS

TVDPath	MDPath	Formation
3372.0	3579.8	G SAND
3465.0	3679.8	G SAND BASE
5787.0	6174.8	MVRD
5843.0	6233.7	WFRK/UMVRD
6958.0	7367.6	TOP GAS
8422.0	8831.6	CMEQ
9318.0	9727.6	RLNS



DESIGN TARGET DETAILS

Name	TVD	+N/-S	+E/-W	Northing	Easting	Latitude	Longitude
PA 324-13 TD	9468.0	-466.2	-2237.7	1623361.70	2308986.10	39° 31' 9.550 N	107° 56' 59.237 W

SECTION DETAILS

Sec	MD	Inc	Azi	TVD	+N/-S	+E/-W	Dleg	TFace	VSec	Target
1	0.0	0.00	0.00	0.0	0.0	0.0	0.00	0.00	0.0	
2	135.0	0.00	0.00	135.0	0.0	0.0	0.00	0.00	0.0	
3	854.1	21.57	258.23	837.2	-27.3	-131.0	3.00	258.23	133.8	
4	5979.5	21.57	258.23	5603.6	-411.6	-1975.8	0.00	0.00	2018.2	
5	7417.6	0.00	0.00	7008.0	-466.2	-2237.7	1.50	180.00	2285.7	
6	9877.6	0.00	0.00	9468.0	-466.2	-2237.7	0.00	0.00	2285.7	PA 324-13 TD