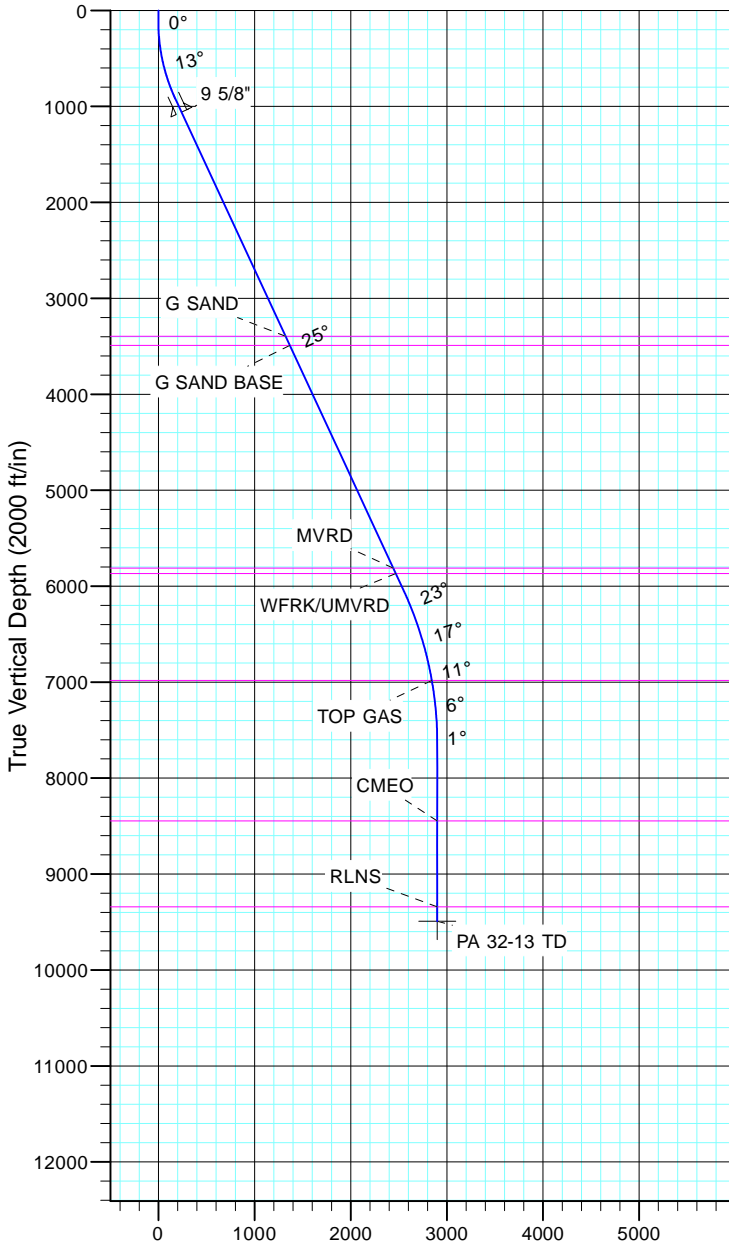


TEP Rocky Mountain LLC  
Project: Garfield County, CO NAD83  
Site: PA 44-13  
Well: PA 32-13  
Wellbore: OH  
Design: Plan #1



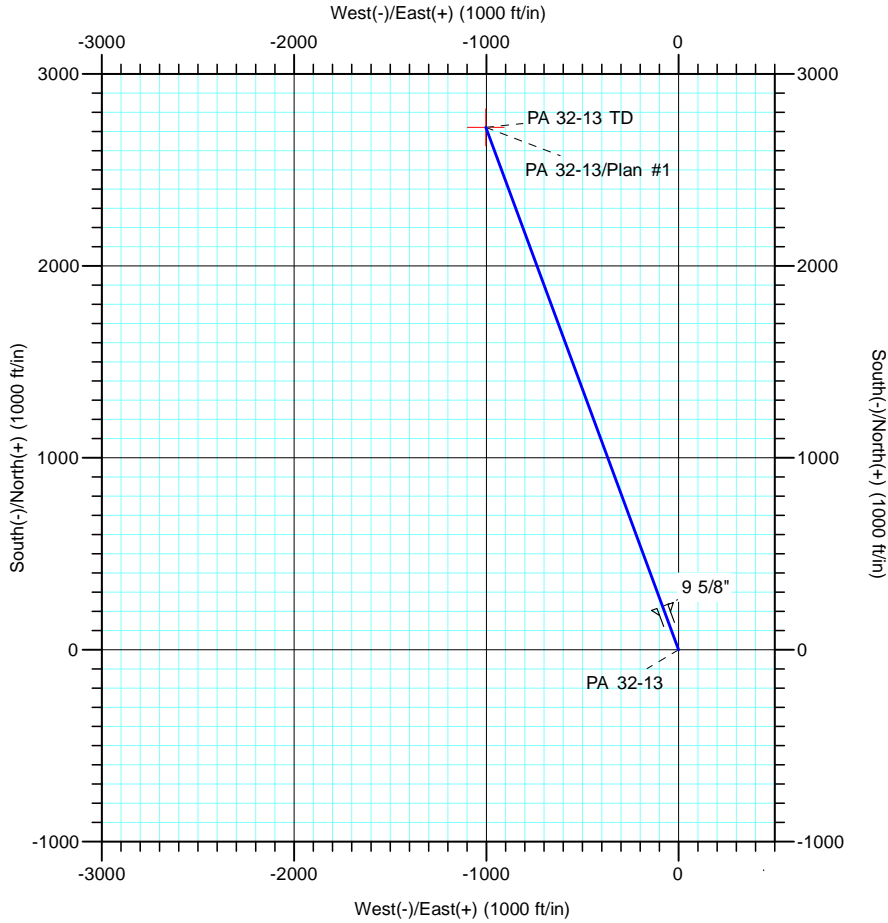
Azimuths to True North  
Magnetic North: 11.43°  
  
Magnetic Field  
Strength: 53064.4nT  
Dip Angle: 66.02°  
Date: 12/31/2004  
Model: IGRF2000



Vertical Section at 339.79° (2000 ft/in)

CASING DETAILS			
TVD	MD	Name	Size
1060.2	1100.0	9 5/8"	9.625

FORMATION TOP DETAILS		
TVDPath	MDPath	Formation
3397.0	3675.6	G SAND
3490.0	3778.1	G SAND BASE
5812.0	6337.4	MVRD
5868.0	6399.2	WFRK/UMVRD
6983.0	7579.6	TOP GAS
8447.0	9047.0	CMEO
9343.0	9943.0	RLNS



DESIGN TARGET DETAILS							
Name	TVD	+N/-S	+E/-W	Northing	Easting	Latitude	Longitude
PA 32-13 TD	9493.0	2722.9	-1002.1	1626560.00	2310295.30	39° 31' 41.498 N	107° 56' 43.635 W

SECTION DETAILS											
Sec	MD	Inc	Azi	TVD	+N/-S	+E/-W	Dleg	TFace	VSect	Target	
1	0.0	0.00	0.00	0.0	0.0	0.0	0.00	0.00	0.0		
2	120.0	0.00	0.00	120.0	0.0	0.0	0.00	0.00	0.0		
3	949.0	24.87	339.79	923.2	166.2	-61.2	3.00	339.79	177.1		
4	6585.0	24.87	339.79	6036.6	2390.6	-879.8	0.00	0.00	2547.3		
5	8243.0	0.00	0.00	7643.0	2722.9	-1002.1	1.50	180.00	2901.5		
6	10093.0	0.00	0.00	9493.0	2722.9	-1002.1	0.00	0.00	2901.5	PA 32-13 TD	