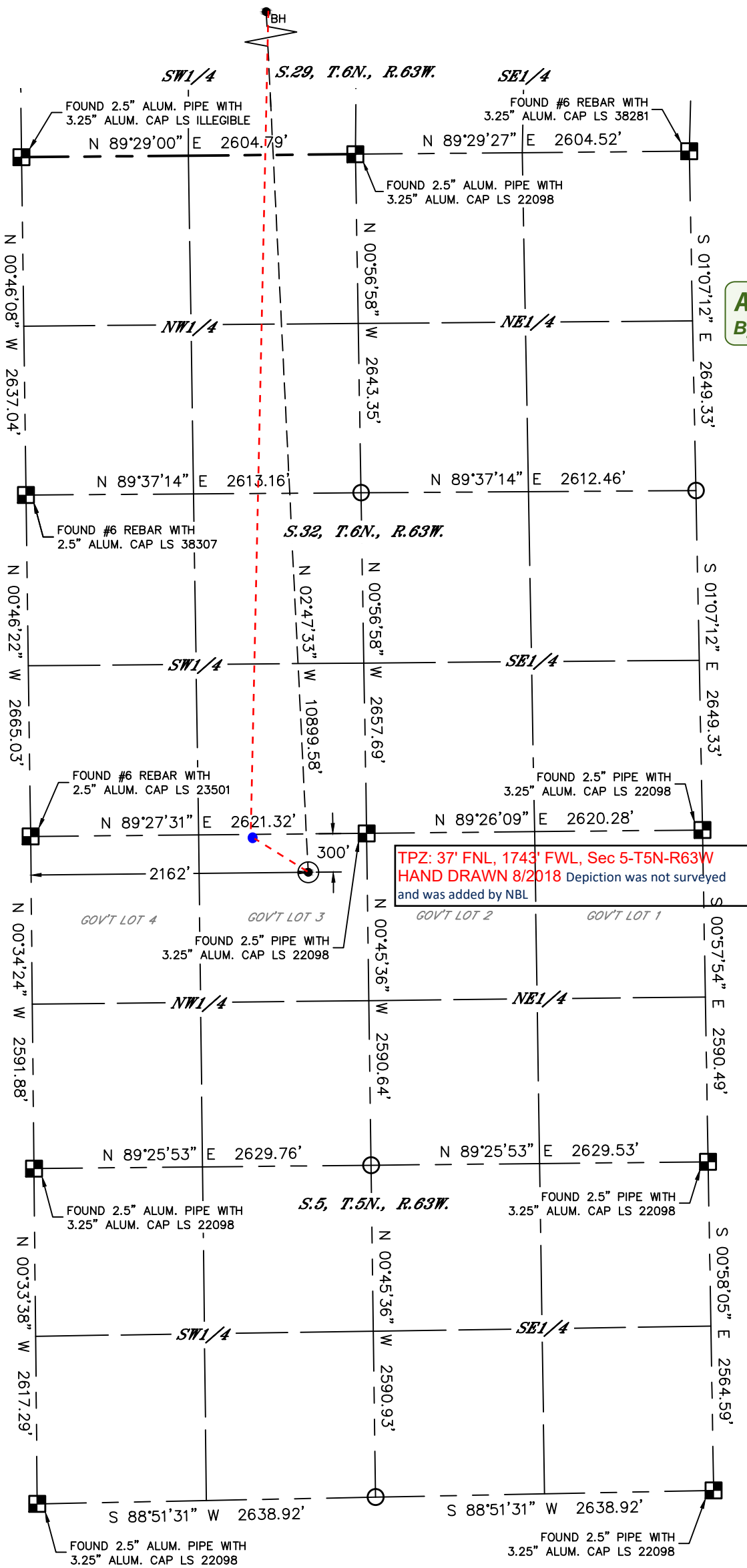




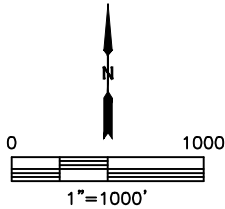
Lat40°, Inc. 6250 W. 10th Street, Unit 2, Greeley, CO 970-515-5294

WELL LOCATION CERTIFICATE
WELLS RANCH STATE AA32-763

SECTION: 5
TOWNSHIP: 5N
RANGE: 63W
6TH. P.M.
WELD COUNTY, CO



APPROVED
By Cory at 10:22 am, Aug 31, 2018



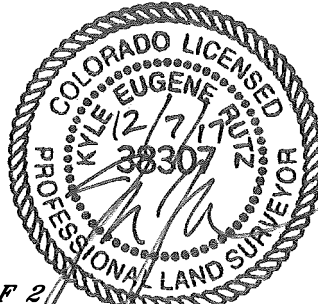
CLIENT: NOBLE ENERGY, INC.				LANDMAN: CORY NEIGHBORS			
INSTRUMENT OPERATOR: JAKE STILLE				SURVEY DATE: 11/06/2017			
SURFACE USE: RANGELAND				SURFACE USE: RANGELAND			
SHL FOOTAGE	SHL LAT °	SHL LONG °	SHL PDOP	SHL ELEV (FT.)	SHL 1/4/1/4	SHL S-T-R	
300	FNL	2162	FWL	40.43488	-104.46244	2.8	4683
							NENW
							5-5-63

BHL FOOTAGE	BHL LAT °	BHL LONG °	BHL S-T-R
0	FNL	1760	FWL
			40.46478
			-104.46389
			29-6-63

- LEGEND
- ALIQUOT MONUMENT AS DESCRIBED
 - CALCULATED POSITION
 - SURFACE HOLE LOCATION (SHL)
 - ENTRY POINT LOCATION (EP)
 - BOTTOM HOLE LOCATION (BHL)
 - EXISTING WELL
 - ABANDONED WELL

NOTE:

- Bearings shown are Grid Bearings of the Colorado State Plane Coordinate System, North Zone, North American Datum 1983. The lineal dimensions as contained herein are based upon the "U.S. Survey Foot."
- Distances to section lines measured at 90 degrees from said section lines.
- Ground elevations are based on an observed GPS elevation (NAVD 1988 DATUM).
- Latitude and Longitude shown are (NAD 83 DATUM).
- IMPROVEMENTS: See LOCATION DRAWING for all visible improvements within 500' of oil and gas location.
- This map does not represent a boundary survey.

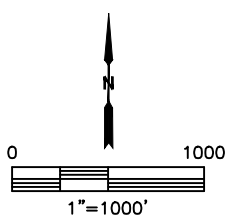
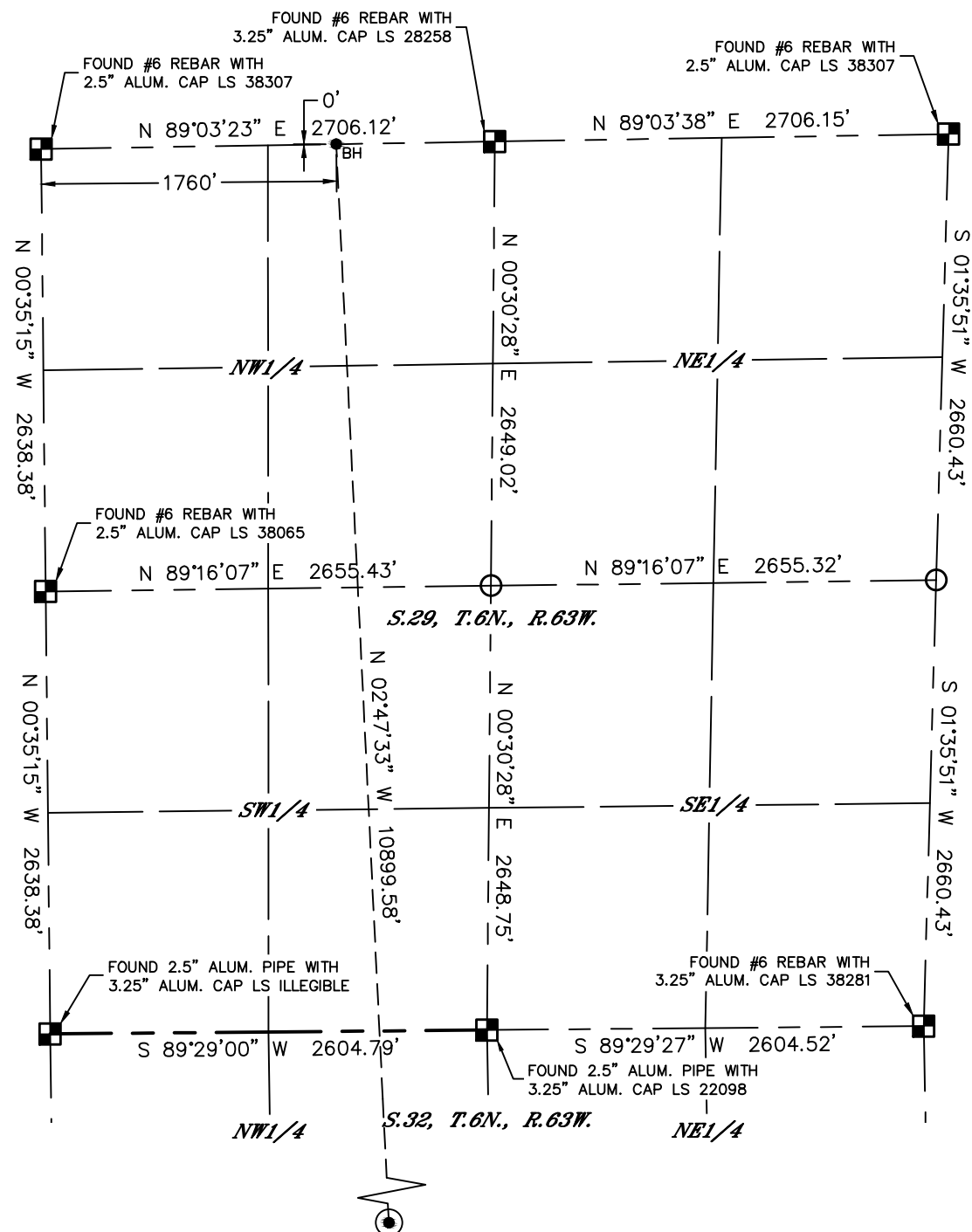


SHEET 1 OF 2
Kyle E. Rutz—On behalf of Lat40°, Inc.
Colorado Licensed Professional Land Surveyor No. 38307
DATE: 12/7/2017
PROJECT#: 2017094








WELL LOCATION CERTIFICATE

WELLS RANCH STATE AA32-763

SECTION: 5
TOWNSHIP: 5N
RANGE: 63W
6TH. P.M.
WELD COUNTY, CO



LEGEND

- LEGEND
-  = ALIQUOT MONUMENT AS DESCRIBED
 -  = CALCULATED POSITION
 -  = SURFACE HOLE LOCATION (SHL)
 -  = ENTRY POINT LOCATION (EP)
 -  = BOTTOM HOLE LOCATION (BHL)
 -  = EXISTING WELL
 -  = ABANDONED WELL



SHEET 2 OF 2

Kyle E. Rutz—On behalf of Lat40⁺, Inc.
Colorado Licensed Professional Land Surveyor No. 38307
DATE: 12/7/2017
PROJECT#: 2017094